

U.S.S.

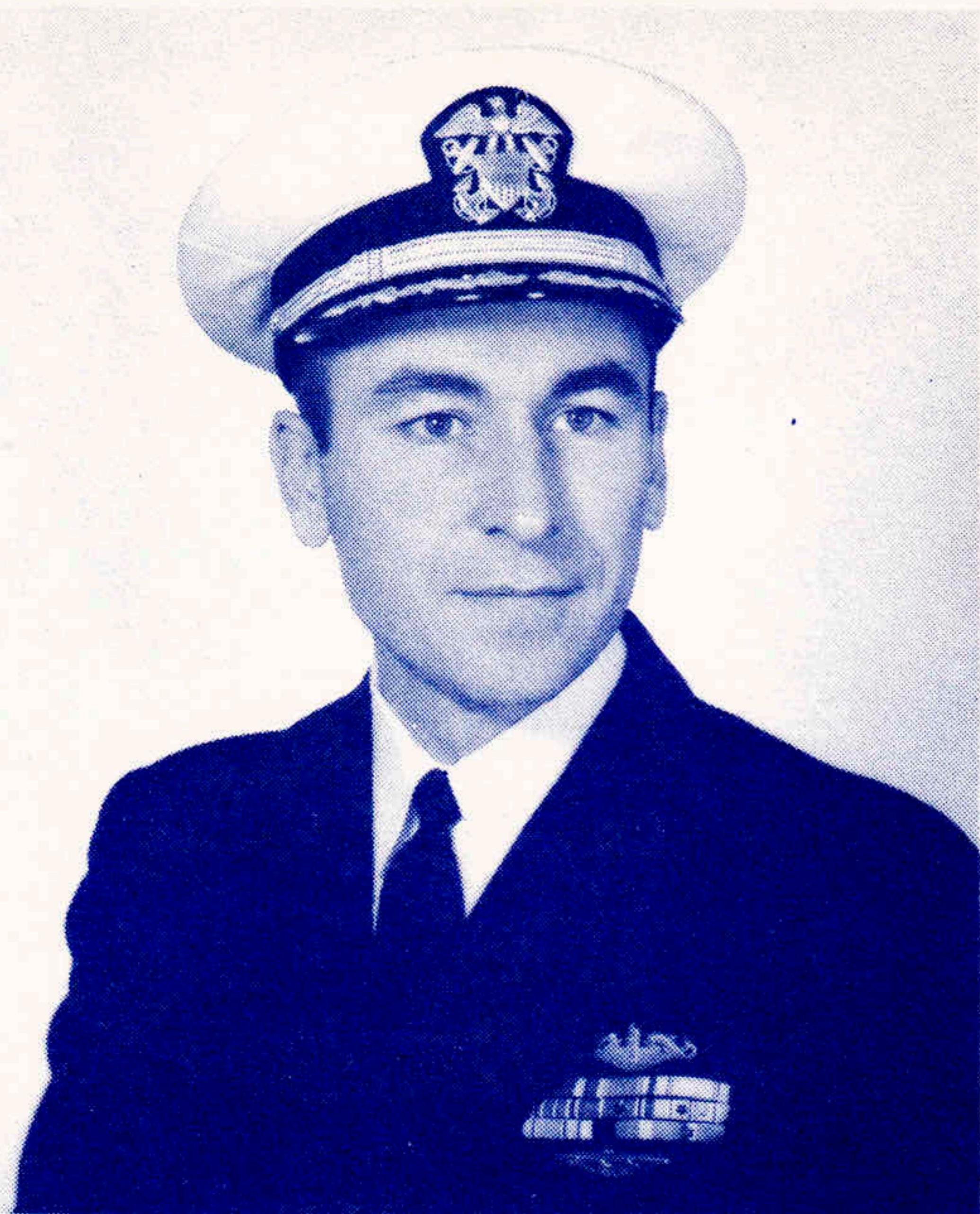
ETHAN

ALLEN

SSB (N) 608

8 AUGUST 1961

1:30 P.M. EDST



PAUL L. LACY, JR.,
Captain USN
Commanding Officer, Blue Crew

Captain LACY was born in Dallas, Texas, on August 2, 1920. After completing two years at Southern Methodist University, he entered the U. S. Naval Academy on June 7, 1939. Following his commissioning as an Ensign in June 1942, he served for one and one half years in USS CLEVELAND (CL-55), seeing action in the North African Invasion of October 1942 and in the South Pacific campaigns in the Solomon Island area, including the Battle of Empress Augusta Bay. For her performance in this battle, CLEVELAND was awarded the Navy Unit Citation.

Upon completion of Submarine School in April 1944, Captain LACY reported to USS SEA CAT (SS 399) and participated in four war patrols as Gunnery Officer. As a result of his participation in these patrols, Captain LACY was awarded the Navy Commendation Medal with Combat V and the Submarine Combat Insignia.

In the first three years following World War II, he received postgraduate training at the Naval Academy and at the University of California at Los Angeles. In June 1949 he was awarded a Master of Science degree in Applied Physics.

During the period June 1949 to March 1954, Captain LACY served as Executive Officer of the Submarine BAYA and ENTEMEDOR; Division Engineer on the staff of Commander Submarine Division 51; and as Proof and Inspection Officer at the Naval Torpedo Station, Keyport, Washington. Captain LACY has had the rare distinction of serving as Commanding Officer of three submarines, USS ENTEMEDOR, USS GUITARRO and USS PICKEREL. In September 1956, following duty in PICKEREL, he reported to the Bureau of Ordnance where he served as a Research and Development Officer for underwater weapons systems.

From August 1958 until June 1959, Captain LACY attended the one year course in Naval Warfare at the U. S. Naval War College in Newport, R. I. In June 1959, he reported to the Office of the Assistant Director, Naval Reactors, Division of Reactor Development, USAEC, where he received a one year course in theoretical and practical aspects of reactor engineering and the nuclear propulsion plant of ETHAN ALLEN.

Following additional special training in the POLARIS Weapon Systems, Captain LACY reported in August 1960 to the Electric Boat Division, General Dynamics Corporation at Groton, Connecticut, as Prospective Commanding Officer of the Navy's largest submarine, ETHAN ALLEN (SSB(N)-608).

COMMISSIONING

INVOCATION

CAPT H. J. SCHNU

Introduction of Builders

Captain William C. HUSHING, USN, S

REMARKS

Mr. Carleton Shugg, President and General

General Dynamics

Introduction of the Commanding Officer

Captain William C. HUSHING, USN, S

Remarks and Reading of Authority

Rear Admiral George H. WALES, USN,

Hoisting of Ensign, Union Jack

National Anthem

United States Coast Guard

Assumption of Command and

Captain Paul L. LACY

Breaking of Persimmon

The Under Secretary

Reporting of the

Commander William W.

Remarks

Vice Admiral William F. Raborn, Jr.

Bureau of Naval Weapons

Introduction of the

Vice Admiral Elton W. Grenfell, USN

U. S. Atlantic

Address

The Honorable Paul B. Fay, Jr., U.S. Representative

Benedict

Lieutenant James J. H.

NING PROGRAM

OCATION

HNURR, CHC, USN

uilder's Representative

SN, Supervisor of Shipbuilding, Groton

MARKS

General Manager, Electric Boat Division
amics Corporation

mandant, Third Naval District

SN, Supervisor of Shipbuilding, Groton

ority to Place Ship in Commission

USN, Commandant, Third Naval District

Jack and Commission Pennant

nal Anthem

t Guard Academy Band

d and Setting of the Watch

L. Lacy, Jr., USN

Personal Flag of
retary of the Navy

f the Gold Crew

a W. Behrens, Jr., USN

emarks

n, Jr., Director of Special Projects,
apons, Navy Department

he Principal Speaker

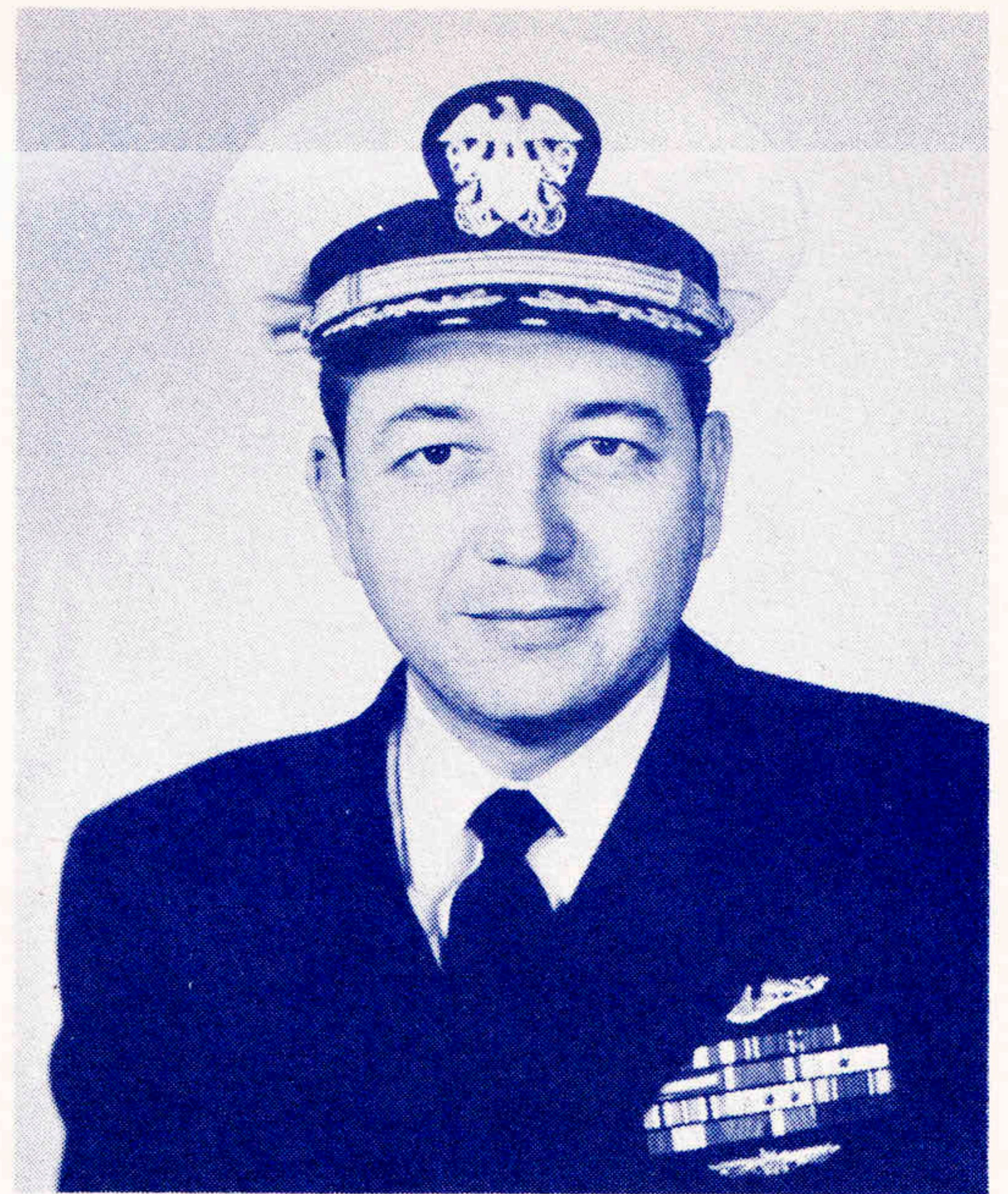
, USN, Commander Submarine Force
atlantic Fleet

ddress

Jr., Under Secretary of the Navy

ediction

s J. Hogan, CHC, USN



WILLIAM W. BEHRENS, JR.,
Commander USN
Commanding Officer, Gold Crew

Commander BEHRENS was graduated from the United States Naval Academy in 1943, and was assigned to submarine duty. During World War II he made a total of six war patrols in the Pacific aboard the highly successful submarines USS SANDLANCE and USS PICUDA. In 1948 and 1949, Commander BEHRENS served as Executive Officer of the USS CLAMAGORE and in 1952 as Executive Officer of USS ODAX. Commander BEHRENS assumed his first submarine command, the USS BALAO, in 1953. After this tour, he commanded the USS HARDER, one of a new class of fast attack submarines. Commander BEHRENS was then detailed to organize the Navy's Nuclear Power School at New London, Connecticut. He served as its first Director until 1957 when he was ordered to the Atomic Energy Commission Office of Vice Admiral H. G. RICKOVER as a special advisor on submarine matters. In 1959, Commander BEHRENS was ordered to command of the USS SKIPJACK, the first attack submarine incorporating nuclear power and the then radically new "ALBACORE" type streamlined hull. He was detached from SKIPJACK in December of 1960 in order to attend the Polaris Command Course in preparation for duty as Commanding Officer (GOLD) of the nuclear powered Polaris submarine, USS ETHAN ALLEN, the Navy's largest. He reported to USS ETHAN ALLEN for duty in March 1961.

Commander BEHRENS is the son of Rear Admiral W. W. BEHRENS, Sr., United States Navy (Retired), and Mrs. BEHRENS of Devonshire Road, Harrisburg, Pennsylvania, and the husband of the former Betty Ann Taylor of Tampa, Florida. Commander and Mrs. BEHRENS reside in New London, Connecticut, with their four children.

For his services during World War II, Commander BEHRENS was awarded the Silver Star Medal, the Bronze Star Medal with "V", the Presidential Unit Citation, the Navy Unit Commendation, and the Submarine Combat Patrol Pin. For his duty in SKIPJACK, he was awarded the Navy Legion of Merit.

COMMISSIONING PROGRAM

INVOCATION

CAPT H. J. SCHNURR, CHC, USN

Introduction of Builder's Representative

Captain William C. HUSHING, USN, Supervisor of Shipbuilding, Groton

REMARKS

Mr. Carleton Shugg, President and General Manager, Electric Boat Division
General Dynamics Corporation

Introduction of the Commandant, Third Naval District

Captain William C. HUSHING, USN, Supervisor of Shipbuilding, Groton

Remarks and Reading of Authority to Place Ship in Commission

Rear Admiral George H. WALES, USN, Commandant, Third Naval District

Hoisting of Ensign, Union Jack and Commission Pennant

National Anthem

United States Coast Guard Academy Band

Assumption of Command and Setting of the Watch

Captain Paul L. Lacy, Jr., USN

Breaking of Personal Flag of The Under Secretary of the Navy

Reporting of the Gold Crew

Commander William W. Behrens, Jr., USN

Remarks

Vice Admiral William F. Raborn, Jr., Director of Special Projects,
Bureau of Naval Weapons, Navy Department

Introduction of the Principal Speaker

Vice Admiral Elton W. Grenfell, USN, Commander Submarine Force
U. S. Atlantic Fleet

Address

The Honorable Paul B. Fay, Jr., Under Secretary of the Navy

Benediction

Lieutenant James J. Hogan, CHC, USN

COMMISSIONING CREW

BLUE

CAPT Paul L. LACY, Jr., USN
 LCDR James B. WILSON, USN
 LT Arthur H. MCCOLLUM, Jr., USN
 LT Russell B. MCWEY, USN
 LT James F. VARLEY, USN
 LT David G. HARSCHIED, USN
 LCDR Steven A. WHITE, USN
 LT James P. FORSYTH, USN
 LT Clifton G. FOSTER, Jr., USN
 LT John G. JUERGENS, USN
 LT James R. BEATTY, III, USN
 LCDR Tor RICHTER, MC, USN
 LT Roy C. PAUL, USN

OFFICERS

Commanding Officer
 Executive Officer
 Navigator
 Weapons Officer
 Assistant Weapons Officer
 Communications Officer
 Engineer Officer
 Electrical Division Officer
 Damage Control Assistant
 Main Propulsion Assistant
 Supply Officer
 Medical Officer
 Assistant Communications Officer

GOLD

CDR William W. BEHRENS, Jr., USN
 LCDR Carlos DEW, Jr., USN
 LT Douglas M. SIMON, USN
 LT Luciano P. MONTANARO, USN
 LT Joseph F. ANDERSON, USN
 LT John A. WEBSTER, Jr., USN
 LT Curtis B. SHELLMAN, Jr., USN
 LT David B. LLOYD, USN
 LT Thomas B. HUDGINS, USN
 LT Marvin L. PHILPOT, USN
 LT Shannon D. HEYWARD, USN
 LT Robert E. THOMPSON, MC, USN

CHIEF PETTY OFFICERS

DUCHARME, Armand N., ICCM (SS), Chief of the Boat (Blue)

EVATTE, William O., RMC (SS), Chief of the Boat (Gold)

ALLEN, Roger D., MMCA (SS)
 BAKER, Dean L., QMCA (SS)
 BALDWIN, Kenneth E., ETCA (SS)
 BARLOW, Verne D., FTCA (SS)
 BISHOP, Carl H., ETCA (SS)
 BRAMAN, Elvin G., ENCA (SS)
 BROWN, Earl D., ENCA (SS)
 CORDERO, Richard E., ENCA (SS)
 CORNELIUS, Lewis Jr., EMC (SS)
 EVANS, Karl L., EMC (SS)
 GISCHEL, Edwin H., MMCA (SS)
 GRAHAM, William E., SOCA (SS)
 HAGUE, William E., YNCS (SS)
 HARMON, Shirley R. Jr., ETCS (SS)

HARRIS, Donald H. Jr., EMCA
 HILL, Thomas (n), FTC (SS)
 HOUSE, William L., SMCA (SS)
 IGNACIO, Rafael C., SDC (SS)
 IVANOFF, George R., RMCA (SS)
 JOHNSON, Donald G., SKCA
 JONES, Willis M., ETC (SS)
 KRAIMER, Harold C., EMCM (SS)
 LAVOIE, Richard A., RMCA (SS)
 LEE, Bobbie J., CSCA (SS)
 MAPLE, Howard R., ICC (SS)
 MARSCHAK, Joseph A., ENCA (SS)
 MOORE, Melvin D., ETCA (SS)
 MORGAN, William M., EMCA (SS)

PAGE, William C., ICCA (SS)
 PAROLA, Mario P., HMCS
 RAMOS, Frank S., GSCA (SS)
 RICHARDS, Paul G., TMCA (SS)
 ROSCOE, John W., SOCA (SS)
 RUSSELL, Barton O., TMCA (SS)
 SKINNER, Robert L., ETCA (SS)
 SPENCER, George T., GSC (SS)
 TIERNEY, Raymond E., ENCA (SS)
 TIMIESKI, Edward S., ENCA (SS)
 TURNER, John W. Jr., FTC (SS)
 WORTHINGTON, Vincent (n), ENCA
 YONTS, Lee (n), ENCA (SS)
 ZERHUSEN, Leo J. J., ENCA (SS)



ADAMS, James F., IC2 (SS)
 ALBAN, Eugene W., Jr., QM3 (SS)
 ALEXANDER, Berkley J., IC2 (SS)
 ANDERSON, Dennis E., EN3 (SS)
 ANGEL, Dennis R., ET2 (SS)
 BARBER, George A., FT1
 BELLAMY, Gary S., IC2 (SS)
 BENCENE, Albert J., TM3 (SS)
 BENDER, William C., TMSN
 BENTON, Eugene W., TM2 (SS)
 BERUBE, Norman L. J., EN3 (SS)
 BIRD, Richard C., EN3 (SS)
 BLEVONS, Ramon E., FT2 (SS)
 BLUE, Douglas N., GS3 (SS)
 BOCK, Richard D., CS1 (SS)
 BODNAR, Elmer P., EM2 (SS)
 BONOW, David C., TM2 (SS)
 BOOKER, James E., ET1 (SS)
 BOOTH, Howard W. Jr., TM2 (SS)
 BRADLEY, Charles J., FT1 (SS)
 BRINGS, Owen G., ET2 (SS)
 BROOKS, William A., FT1 (SS)
 BROTT, Ralph E. Jr., FTM3 (SS)
 BUSS, George E., GS1
 BUTLER, Robert E., MM1
 BYRNE, John E., ET2 (SS)
 CADY, Donald L., TM2 (SS)
 CAHILL, John E., ET2 (SS)
 CANNON, Robert C., SOS3 (SS)
 CARPENTER, James R., TM1 (SS)
 CARR, Ralph E., EN1
 CARROW, Robert S., QM1 (SS)
 CARSON, Newell E., IC2 (SS)
 CHUDOBA, Phillip M., ETR3 (SS)
 COLEY, Robert (n), SD1 (SS)
 COLLINS, Robert F., ETR3
 COOK, Clifford V., EN1
 COVIELLO, Ralph M., EN1 (SS)
 COX, William D., CS2 (SS)
 DANIEL, Jess M., MM2 (SS)
 DAVEY, William R., GS2 (SS)
 DAVIS, Francis G., EM1 (SS)
 DAVIS, Martin E., IC1
 DEMPSEY, Patrick (n), EN2 (SS)
 DERRICOTT, Clyde W., CS3 (SS)
 DEWEESE, Jerry J., RM1 (SS)
 DONACKI, Eugene L., EN2 (SS)
 DRAYTON, Calvin W., ET2 (SS)
 DRESSER, James D., QM2 (SS)
 DUFFELL, William O. Jr., FT1 (SS)
 DYAL, Wayne R., EM2
 DYE, Richard G., EM2 (SS)
 EHRlich, Ralph H., ET2 (SS)
 ELLIS, Aaron (n) Jr., EN2 (SS)
 FARMER, Franklin L., QM1 (SS)
 FELTON, Denton R., ETR3
 FENDER, George d'A., EN1 (SS)
 FISHER, Francis R., FT1 (SS)
 FORTUNA, Frank A. Jr., GSSN
 FOWLER, Robert E., ET2
 FRESHOUR, Vernon J., TM2 (SS)
 FULTON, Jerry R., ET2 (SS)
 GEILER, Richard W., RM2 (SS)

GEMMELL, Ronald G., GS1 (SS)
 GENDRON, Arthur M. Jr., YN2 (SS)
 GOINS, Gaile (n), CSSN (SS)
 GOLDSBURY, Donald J., ET2 (SS)
 GRAHAM, Robert A., EN3 (SS)
 GREENE, James E., ET2 (SS)
 GRENIER, Albert (n), CS3 (SS)
 GROUNDARD, Martin V., HM1
 HALL, William C., QM1 (SS)
 HAMILTON, Charles L. Jr., EM1 (SS)
 HANLEY, Claude R., EN1 (SS)
 HANNIFORD, John D., EN1 (SS)
 HARRELSON, James T., GS1 (SS)
 HARRIS, George H., RD2 (SS)
 HARRISON, Burton M. Jr., RM3 (SS)
 HARRISON, Glenn L., FT1 (SS)
 HARROD, Thomas C., SN
 HARVEY, James R., ET2 (SS)
 HAWKINS, Howard W., FN
 HEISELT, Leonard W., RM2 (SS)
 HENSLEY, Johnnie B., ENFA
 HERSHBERGER, Samuel "W" Jr.,
 MM1 (SS)
 HOLMES, Marvin P., ET2 (SS)
 HOSPIDOR, J. W., GSSN
 HUBER, Carl H., GSSN
 HUSZAI, John (n), TM1 (SS)
 JANES, Robert E. Jr., SOS2 (SS)
 JASPER, William D., GS2 (SS)
 JOHNSON, Arthur J., MM2 (SS)
 JOHNSON, John E. Jr., EN2 (SS)
 JOYNER, James A. Jr., GS2 (SS)
 KEARNS, Thomas O., EM1
 KICKLIGHTER, Carl K., EN1 (SS)
 KIMBRELL, Jimmy L., ETR3 (SS)
 KINSELL, Ralph W., FT2
 KOCH, Karl W. Jr., ET2 (SS)
 KOEPPEN, David E., IC1 (SS)
 KOSTBADE, Clarence "W", RM1 (SS)
 KOUIS, Anthony P., RD2 (SS)
 LANSDOWNE, Nello A., EM2 (SS)
 LA ROCK, Douglas M., FN
 LEACH, Forrest C., ETS3 (SS)
 LEDOUX, Philip N., ET2 (SS)
 LEE, Guy H., ETR3
 LEONARD, Robert W. Jr., ET1 (SS)
 LOYEAR, Rodney L., ET2 (SS)
 LUCIANO, Robert R., QM2 (SS)
 MABRY, Templeman N. Jr., EN3 (SS)
 MACK, Thomas M., EN3
 MAGRATH, John O., FT2 (SS)
 MAINE, John R., SN (SS)
 MARCELLA, Paul L., ENFN
 MARQUARDT, George A., HM1 (SS)
 MARTIN, David A., GS3
 MAWHINNEY, Vaughn T., FN
 MAY, Daniel R. Jr., SO1 (SS)
 MAYER, Milo D., EM1 (SS)
 MCCOMAS, William S., EN3
 MCCOMBS, Torrence C., IC2
 MCDUFF, Charles C., ETR3
 MCGINTY, Millard J., EM1 (SS)
 NEBRIDA, Crisanto P., SD3 (SS)

NISBET, Charles D., ET2
 OLSON, Gordon D., RM1 (SS)
 OUELLETTE, Herman R., SN
 PACE, John T., EN1 (SS)
 PACK, Edward H., FT1 (SS)
 PALLADINO, Eugene (n), ET1 (SS)
 PASKALE, Joseph M., GS1 (SS)
 PECK, Howard J., ETR3 (SS)
 PICOU, Watts J., SD2 (SS)
 PIERSON, Melvin C., SN
 PIMENTEL, Carlos F., EM1 (SS)
 POLINSKY, John W., TM1 (SS)
 PORTER, Bennie (n) Jr., ET1 (SS)
 PRICE, Joseph H., SN
 RANDOLPH, Billy (n), YN1 (SS)
 REEVES, Donald E., ET2 (SS)
 RICHARDSON, Glenn F., FT2
 ROBBINS, Frank S., CS1 (SS)
 ROBINSON, William J. Jr., TM2 (SS)
 RUDD, Maurice R., FTU3
 RUNGE, Herbert L., TM1 (SS)
 SANDSON, Maurice (n), QM1 (SS)
 SATTERFIELD, Ben E., EM2 (SS)
 SCHOONOVER, Joe B., EN1 (SS)
 SEABURY, Merrill R., EN1 (SS)
 SHIPE, Robert D., EN1 (SS)
 SHIPLET, Vernon J., EM3
 SHOEMAKER, Larry R., EM2 (SS)
 SLEEPER, Donald E., SN
 SMITH, D. L., GS3
 SMITH, James T., IC3
 SMITH, Mason B., SD1 (SS)
 SMITH, Thomas F., SK1
 SOBOTA, Ferdinand E. Jr., GS2 (SS)
 SPENCE, Douglas C., ENFA
 STANLEY, Gerald W., ET2 (SS)
 STANLEY, Harrison E., ET1 (SS)
 SWEET, Donald B., SN
 TANNER, Lavern H., TM2 (SS)
 TAYLOR, Kenneth N., MM2
 TAYLOR, Walter R., ETN3 (SS)
 THIMMESCH, Robert H., TM2 (SS)
 THOMAS, David R., SA (SS)
 TRAINOR, John H., EM2 (SS)
 TROWBRIDGE, Gordon W., IC2
 TUCKER, Lawrence E., TM2 (SS)
 WARNER, Rodger R., IC2 (SS)
 WARTUN, L., EN1 (SS)
 WAUGH, Willie (n), SD2 (SS)
 WELZANT, Richard T., EN2 (SS)
 WESTENDORF, Lee J., EN1 (SS)
 WHITE, William E., ET1
 WILLEFORD, Kenneth D., YN3
 WISENALL, Jacob H. Jr., EN2 (SS)
 WOOD, Benny L. Jr., FN
 WUNSCH, William T., HM1 (SS)
 WYATT, William D., YN2 (SS)
 WYNN, Larry D., SM1 (SS)
 YAEGER, William L., SO1 (SS)
 YOUNG, Bruce W. Jr., EN2 (SS)
 YOUNG, David H. Jr., EM2 (SS)
 ZEMSKE, David A., TM2 (SS)
 ZEPEDA, Gilbert R. Jr., ETR3 (SS)