

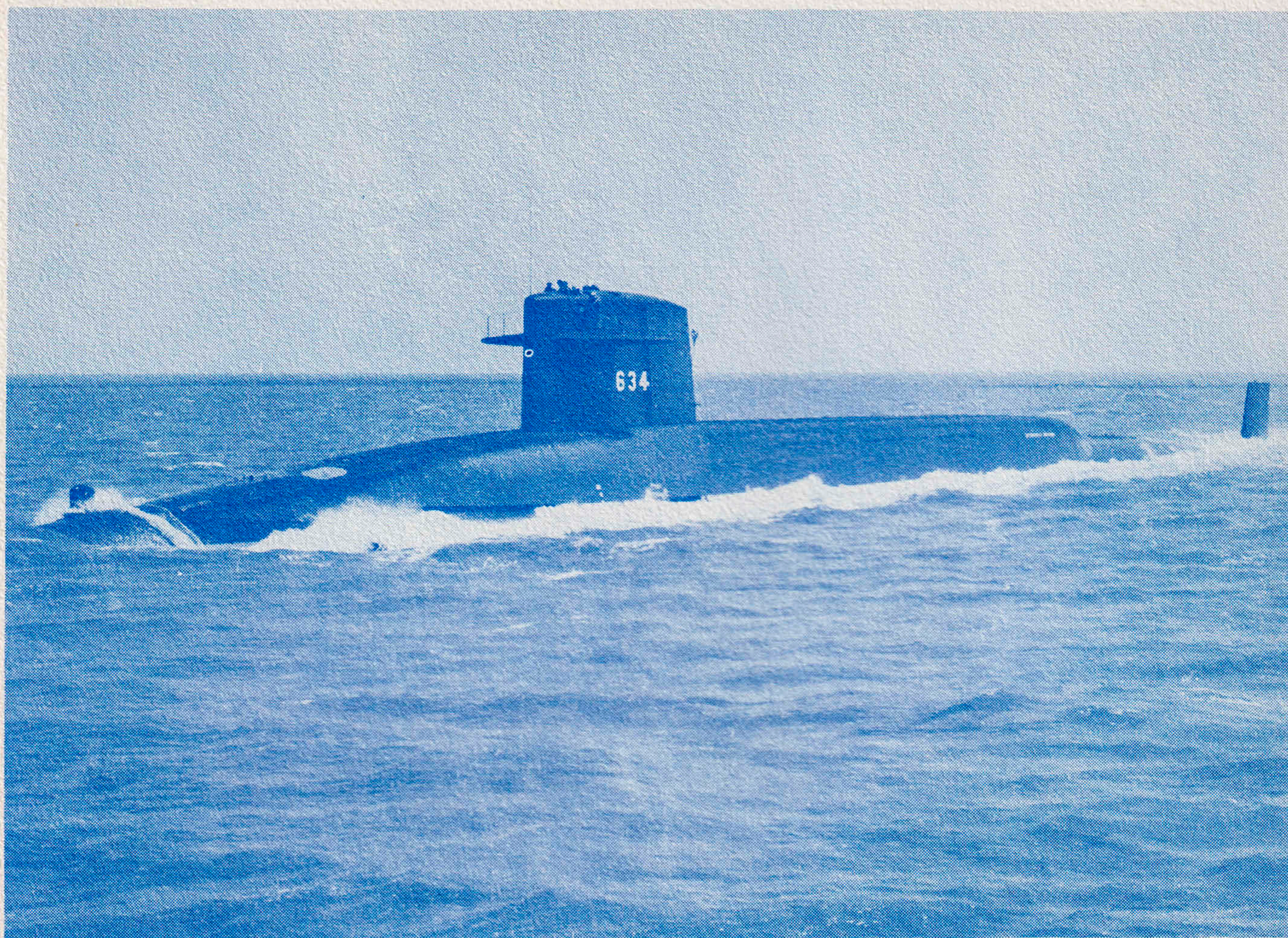
The design reproduced on the cover of this pamphlet is the ship's insignia. White lettering and stars on a blue and red background are intended to suggest the stars and bars of the confederacy — the cause Stonewall Jackson served so well. The words "Strength — Mobility" emblazoned on the banner are taken from letters written by General Jackson, and apply to the Polaris submarine as well as to the tactics he used so successfully. The American Bald Eagle suggests the strength inherent in the Polaris system, while the arm clothed in a confederate sleeve, thrusting a Polaris missile out of the depths of the Pacific Ocean, suggests the power and concealment of the FBM submarine along with the strength of our heritage from General Jackson.



Lieutenant General
T. J. Jackson

This submarine is named for Lieutenant General Thomas Jonathan "Stonewall" Jackson (1824-1863), one of the most famous Confederate generals in the War Between the States. Born in Clarksburg, West Virginia, he earned a West Point appointment and became a distinguished military leader during the Mexican War. At the start of the Civil War he was on the staff of the famed Virginia Military Institute. General Jackson earned the sobriquet of "Stonewall" at the first battle of Bull Run. As reported after the battle, he and his brigade of Virginians stood, when assaulted, "like a stone wall." The nickname was never to leave him. His conduct of the Shenandoah Valley Campaign, emphasizing strength through mobility, is a model of military strategy. He was accidentally shot by his own men during the battle of Chancellorsville in the Spring of 1863 at the age of 39.

At his bedside were his wife and his only daughter, Julia, whose name is borne by his great great granddaughter, our sponsor.



USS STONEWALL JACKSON (SSBN 634)

Keel laid on 4 July 1962

Launched 30 November 1963

Commissioned 26 August 1964

Sponsor: Miss Julia Christian McAfee

Builder: Mare Island Naval Shipyard

PROGRAM

ARRIVAL OF THE OFFICIAL PARTY

HONORS

INVOCATION

by Chaplain C. H. Swift

INTRODUCTION OF

Rear Admiral E. J. Fahy, USN

by Commander J. H. Nicholson, USN

INTRODUCTION OF

Rear Admiral J. McN. Taylor, USN

by Rear Admiral E. J. Fahy, USN

PLACING OF THE SHIP IN COMMISSION

by Rear Admiral J. McN. Taylor, USN

ENSIGN, JACK, AND COMMISSIONING PENNANT ARE HOISTED

NATIONAL ANTHEM

ASSUMPTION OF COMMAND

by Commander J. H. Nicholson, USN

BREAKING OF THE PERSONAL FLAG

of the Commandant of the Twelfth Naval District

REMARKS

by Commander J. H. Nicholson, USN

INTRODUCTION OF

Commander R. A. Frost, USN

by Commander J. H. Nicholson, USN

REMARKS AND ASSUMPTION OF COMMAND OF THE GOLD CREW

by Commander R. A. Frost, USN

INTRODUCTION OF

Captain R. C. Giffen, USN

by Commander J. H. Nicholson, USN

REMARKS AND INTRODUCTION OF

Rear Admiral E. B. Fluckey, USN

by Captain R. C. Giffen, USN

COMMISSIONING ADDRESS

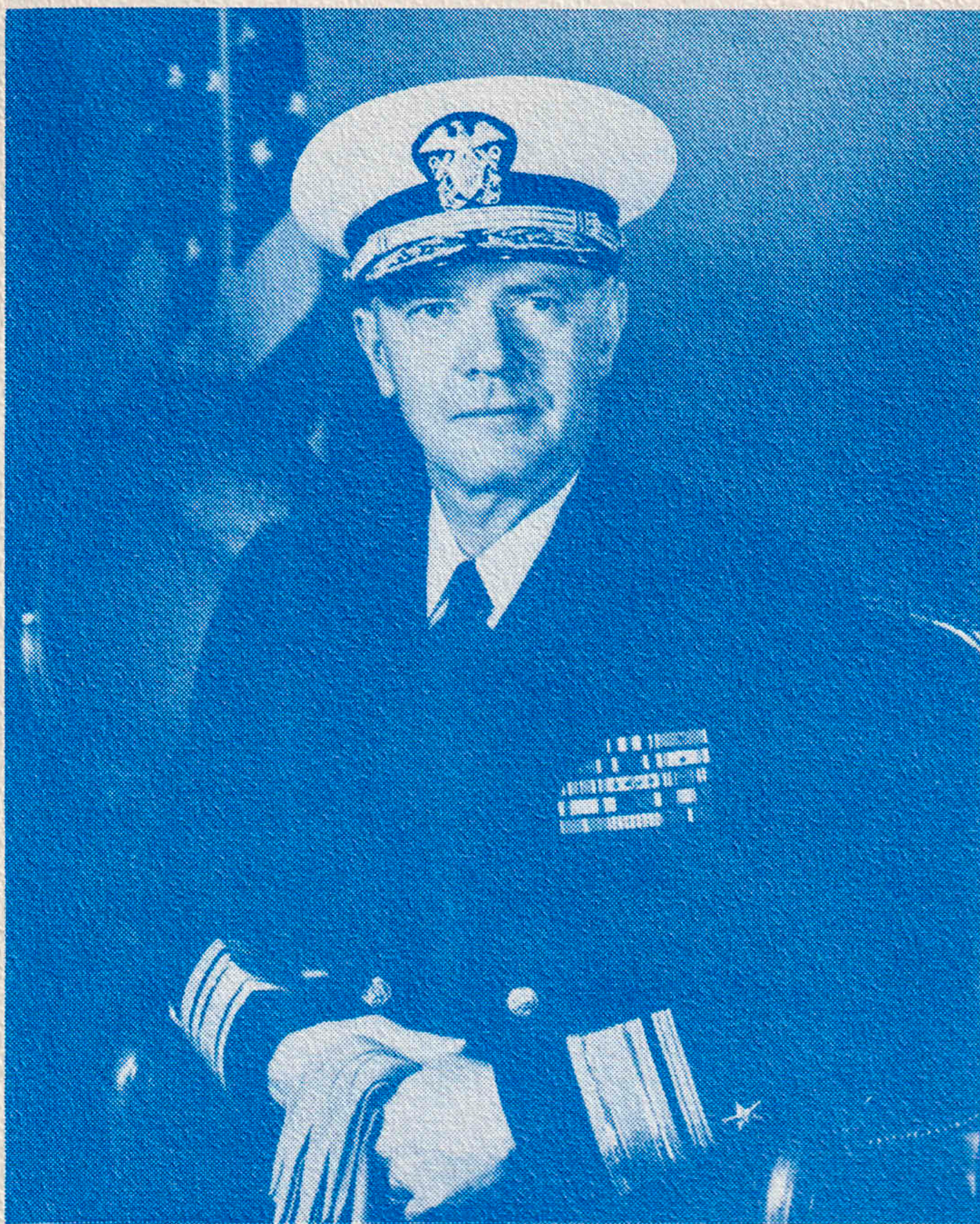
by Rear Admiral E. B. Fluckey, USN

Commander Submarine Force, U. S. Pacific Fleet

BENEDICTION

by Chaplain J. D. O'Leary

DEPARTURE OF THE OFFICIAL PARTY



Commandant Twelfth Naval District

RADM John McN. Taylor, USN assumed the duties of Commander, Western Sea Frontier; Commander, Pacific Reserve Fleet; Commander,

Naval Defense Forces, Eastern Pacific; Commandant, TWELFTH Naval District; and Commander, Naval Base, San Francisco on 28 May 1964.

Admiral Taylor, a native of Knoxville, Tenn., graduated "with distinction" from the U. S. Naval Academy in 1926.

During his distinguished career, Admiral Taylor has had many important commands and assignments, including Deputy Commandant of the Armed Forces Staff College in Washington, D. C.; Commander, Military Sea Transport Service, Eastern Atlantic and Mediterranean Area; Assistant Chief of Naval Operations for Naval Reserve; Commander Cruiser Force and Cruiser Division SIX, Atlantic Fleet; Commander Amphibious Force Atlantic Fleet; Commander SECOND Fleet and NATO Striking Fleet; and Chief of Staff to the Supreme Allied Commander, Atlantic.

For his duties during World War II, Admiral Taylor received, among other awards, the Silver Star "for conspicuous gallantry and intrepidity as Gunnery Officer of the USS MONTPELIER" and the Legion of Merit with Combat "V" for "exceptionally meritorious conduct . . . as Gunnery Officer on the Staff of Commander Amphibious Force Pacific . . ."

Admiral Taylor is married to the former Amelia W. Wade.



Commander
Submarine Force
Pacific Fleet

RADM E. B. Fluckey, USN assumed command of the Submarine Force, U. S. Pacific Fleet on 1 June 1964. His command encompasses all submarine operations in Pacific waters.

Graduating from the U. S. Naval Academy in 1935, he embarked upon a most distinguished career. During World War II he made eleven war patrols, six as the Commanding Officer of USS BARB (SS 220). For his tenth patrol he was awarded the Medal of Honor "for conspicuous gallantry and intrepidity at the risk of his life above and beyond the call of duty." In addition to the Medal of Honor and other awards, he wears the Navy Cross with Gold Stars in lieu of second, third, and fourth Navy Crosses, the Presidential Unit Citation, and the Navy Unit Commendation.

Since World War II Admiral Fluckey has had many important assignments and commands, including duty as the Naval Attache to the American Embassy at Lisbon, Portugal; Commander, Amphibious Group FOUR; Commander, South Atlantic Amity Force; President of the Board of Inspection and Survey; and head of the shipyard appraisal group under the Office of the Secretary of the Navy.

Admiral and Mrs. Fluckey reside in Hawaii. They have one daughter and two grandchildren.



Commander, Mare Island Naval Shipyard

RADM E. J. Fahy, USN, is a native of New York City. Following graduation "with distinction" from the U. S. Naval Academy in 1934, he served in cruisers TUSCALOOSA, CHICAGO, and HOUSTON. Upon graduation from Submarine School in 1938, he was assigned duty in USS PERMIT.

He wears both the Submarine Qualification Pin, and the Submarine Combat Pin with three stars for successful combat patrols during World War II in USS SPEARFISH and as Commanding Officer of USS PLUNGER. He also served on the staff of Commander Submarine Force U. S. Pacific Fleet. For his wartime duties he received the Legion of Merit, a Navy Unit Citation, and two Letters of Commendation with "V" clasp for Valor.

From 1953 to 1956, following duty with the Bureau of ships, the Fifth Naval District, and the staff of Commander, Submarine Force Atlantic Fleet, he served as Commanding Officer and Director of the U. S. Navy Underwater Sound Laboratory.

As Production Officer of Mare Island from 1956 to 1958, Admiral Fahy supervised the construction of USS SARGO. He aided in the development of USS HALIBUT and in the development of project "POP-UP" which was used in pioneering POLARIS underwater launchings.

From 1958 until March 1962, Admiral Fahy was Assistant Chief of the Bureau of Ships for Research and Development, and served as Chairman of the Polaris Command Communications Committee. Since March 1962 he has been Commander, Mare Island Naval Shipyard.

Admiral Fahy is married to the former Cecilia Finn of New York City and has five children, four girls and a boy.

GENERAL DESCRIPTION

The USS STONEWALL JACKSON is a Lafayette Class Fleet Ballistic Missile Submarine. She is 425 feet long, with a beam of 33 feet, and carries a crew of 124 enlisted men and 13 officers.

ENGINEERING PLANT

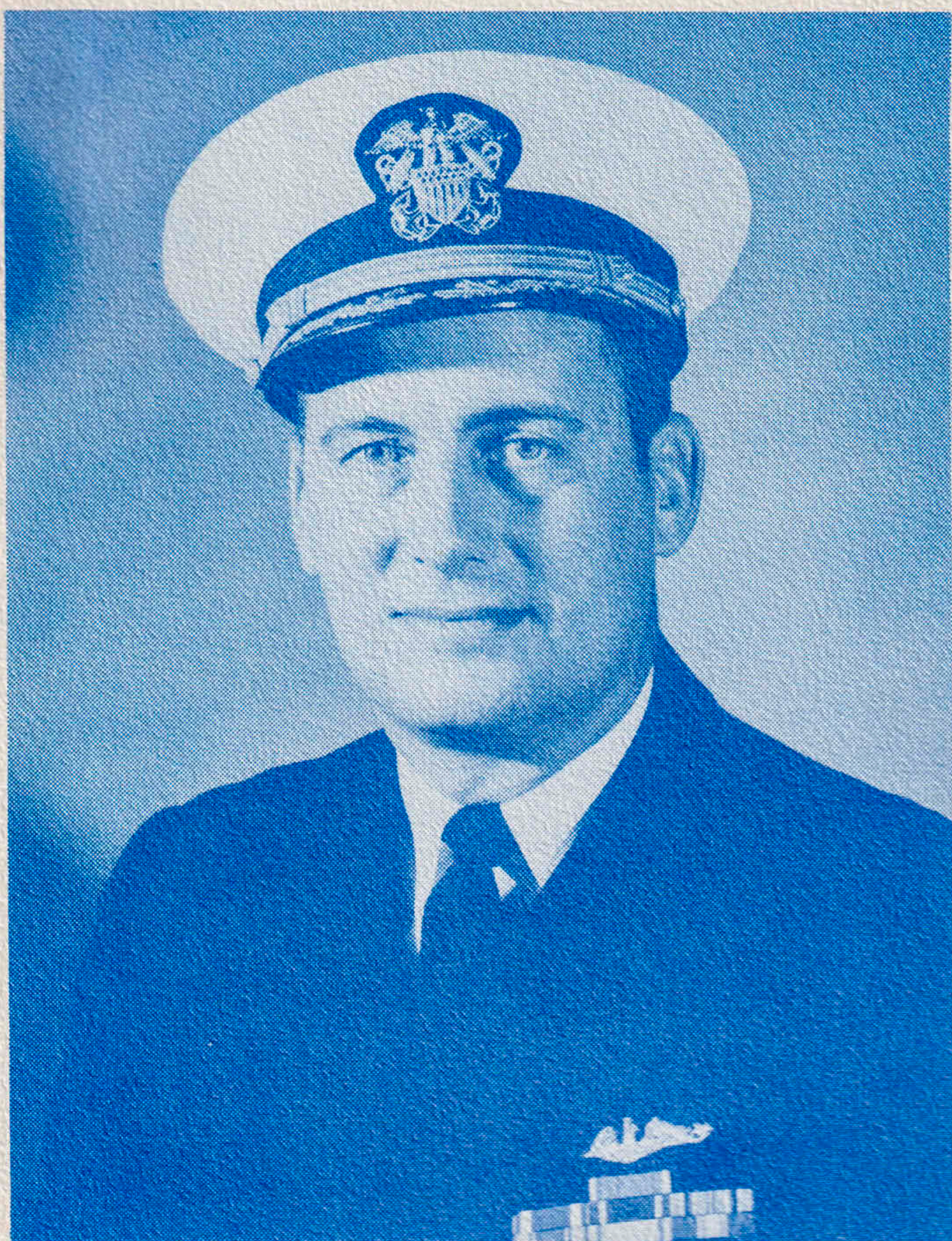
STONEWALL JACKSON is the fifty-second nuclear powered submarine in the U. S. Navy. The ship uses a Westinghouse S5W atomic reactor to heat water. This hot water in turn heats a second water circuit, the steam of which is used to drive power turbines. This system requires no air for combustion and no bulky fuel tanks, allowing the ship to steam submerged indefinitely.

WEAPONS SYSTEM

STONEWALL JACKSON carries sixteen POLARIS A3 solid fueled missiles, armed with atomic warheads. Using large computers on board, and the ship's extremely accurate navigation systems, these missiles can be launched from beneath the surface on a moment's notice. In addition to the missiles, STONEWALL JACKSON has four torpedo tubes capable of firing all of the latest types of torpedoes. These would be fired in time of war mainly in self-defense, before, during, and after firing the missiles.

NAVIGATION SYSTEM

STONEWALL JACKSON has the finest precision navigation systems yet devised. To accurately fire her missiles, the ship's exact position must be known at all times. The basic navigation system utilizes SINS (Ship's Inertial Navigation System) which, by use of gyroscopes and accelerometers, accurately and continuously provides the exact location of the ship, whether surfaced or submerged.



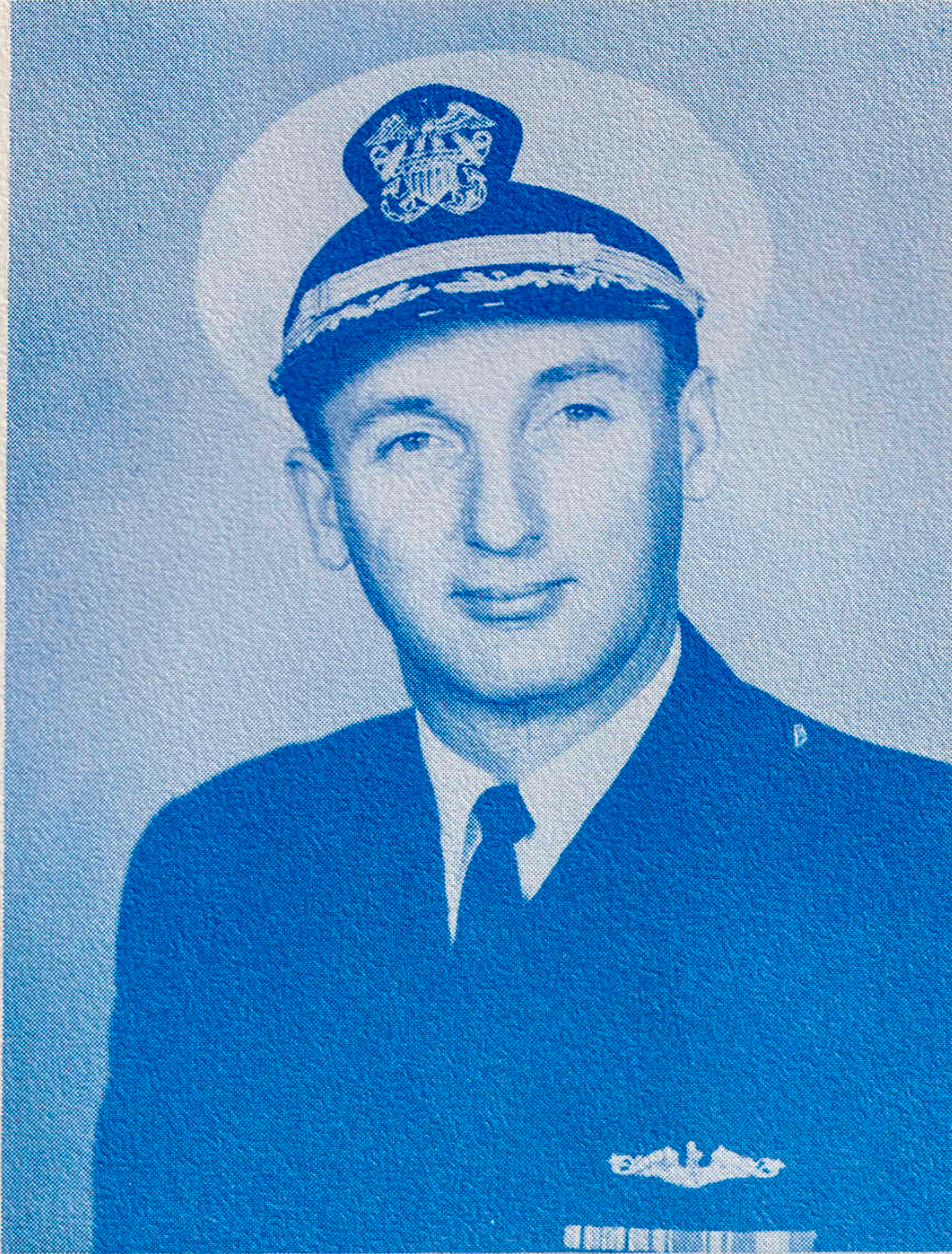
Commanding
Officer
(Blue)

CDR John H. Nicholson, USN, was graduated from the U. S. Naval Academy in 1946. After service in USS COOK

(DMS 36), USS WANTUCK (APD 125), and USS TIRU (SS 416) he was selected for Nuclear Power Training in 1951, one of the first two officers so selected. After completion of training, he commissioned USS NAUTILUS (SSN 571) and served in her for three years as Engineer Officer, Navigator, and Executive Officer.

He next served as Executive Officer and Navigator of USS SKATE (SSN 578). He participated in a 1958 Arctic cruise for which SKATE was awarded the Navy Unit Commendation and CDR Nicholson was awarded the Secretary of the Navy Commendation medal. In 1959 CDR Nicholson served as Commanding Officer of USS PICKEREL (SS 524) after which he took command of USS SARGO (SSN 583). Under his command, SARGO made a highly successful Arctic cruise in 1960 for which SARGO was awarded the Navy Unit Commendation and CDR Nicholson was awarded the Legion of Merit. He has just completed a two year tour in the Submarine Warfare Division of the Office of the Chief of Naval Operations, Washington, D. C.

CDR Nicholson is married to the former Patricia Kent Addison of Boise, Idaho. They have one daughter, Laurie.



Commanding
Officer
(Gold)

CDR Richard A. Frost, USN, graduated from the U. S. Naval Academy in 1949. Upon graduation he served for two years in USS WARRINGTON (DD 843) and then attended Submarine School. His next tours of duty were in the New London, Conn. area where he served in USS CROAKER (SS 246), USS COD (SS 224), and USS ANGLER (AGSS 240). He was then ordered to the commissioning detail of USS SEAWOLF (SSN 575) where he was Navigator and Operations Officer.

Upon detachment from SEAWOLF, CDR Frost was enrolled in the U. S. Naval Postgraduate School where he pursued a course in Operations Research. He was awarded a Master of Science degree.

His next tour of duty was in Pearl Harbor where he was Executive Officer of the USS BASHAW (SS 241). This tour was followed by assignment to the Joint Strategic Target Planning Staff at Offutt Air Force Base, Omaha, Nebraska.

Prior to reporting for duty as the Commanding Officer (Gold) STONEWALL JACKSON, he was Commanding Officer of USS TRIGGER (SS 564).

CDR Frost is married to the former Nancy J. Andrews of New London, Conn. They have three children.

USS STONEWALL JACKSON (SSBN 634)

BLUE CREW ROSTER

CDR J. H. NICHOLSON, USN
Commanding Officer

LCDR D. E. KNISS, USN
Executive Officer

OFFICERS

LCDR D. A. FUDGE, USN

LCDR P. K. SWARTZ JR.,
MC, USN

LT T. E. LEWIN, USN

LT M. G. SCOTT, USN

LT C. B. HENZY, USN

LT J. CHULICK, USN

LT R. E. TUGGLE, USN

LT A. K. THOMPSON, USN

LT R. B. FRASER, SC, USN

LTJG K. A. MEYER, USN

LTJG R. K. SEIBERLING, USN

ENLISTED

N. O. THOMAS, CSCS(SS)
Chief of the Boat

ABBOTT, D. L., TM2
ABEL, A. E., ENCS(SS)
ALTICE, S. F., MT3
ANDERSON, B. A., ETR2
ANDERSON, J. J., ETR2(SS)
ANGEL, D. W., RMC(SS)
ANTONACCI, R. J., SN
BARRANCO, V. J., ETR3
BARRESEL, D. F., TMSN
BASHAM, D. P., RM3(SS)
BATY, W. R., TMSN
BEASLEY, E. J., ET3
BEISEN, J. H., QM1(SS)
BELL, I. G., FN
BENSON, C. B., FTGSN
BETTENCOURT, D. W.,
MM2(SS)
BLIZARD, R. E., EM1(SS)
BOHRER, D. R., MM2(SS)
BOOTH, G. R., MT2(SS)
BROWN, E. K., IC1(SS)
BURGIN, B. R., SN
CARTER, G. G., EMCS(SS)
CHAMBERLAIN, D. A.,
MM3(SS)
CHINN, R. W., FTM2
COLEMAN, H. D., SK1(SS)
CRAGO, J. H., TM2(SS)
DAVIS, D. F., FTM3
DEMME, P. S., MMC(SS)
DORR, S. K., SN
DOTTEN, M. A., ETR2(SS)
ELLIS, W. J., TM1(SS)
FAGOT, E. J., ET3
FEUERSTEIN, F. J., ET1(SS)
FLINN, R. L., ET1(SS)
FLOTO, W. V., TMC(SS)
FORTNER, W. H., IC2(SS)
FRANCESCHIELLO, G.,
RM1(SS)
FREDERICK, C. E., CS3(SS)
GEDRIMAS, A., IC3
GOLFO, A., SD1(SS)
GROUP, F. J., ETNSN
GIFFORD, D. J., QM3(SS)
HAND, R. L., MT3
HANLEY, J. S., ET1(SS)

HARRIS, R. D., ET3(SS)
HARRIS, W. W., ET2
HARRISON, C. E., MM2
HAWKINS, C. A., MT2
HEALEA, D. D., IC1(SS)
HESSMAN, C. L., MM3(SS)
HIGGINS, E. A., SO2(SS)
HOOVER, R. A., MM1(SS)
HOPKINS, S. B., TM3(SS)
HOPKINS, W. E., EN3(SS)
HUSTON, J. M., SOC(SS)
IDDINGS, J. W., QM1
INGLE, J. E., ET2
IVEY, H. C., TM1(SS)
JERNIGAN, S. P., EM2
JETTE, G. D., RM3(SS)
JOERN, C. L., TN
JONES, L. D., ENC(SS)
JORDAN, C. L., SN
JULAO, J. B., SD2(SS)
KENNINGTON, J. D.,
SK1(SS)
KING, J. R., MT3
KLINE, R. P., EN2(SS)
LANE, R. V., IC1(SS)
MANGUS, D. E., MMFN
MARBLE, F. R., CS2(SS)
MC CAMANT, J. A.,
MTC(SS)
MC COY, J. F., SO2(SS)
MC CRANIE, C. E.,
MM3(SS)
MC GINNIS, J. R., MT3
MC LEAN, P. I., ET1
MEYER, A. L., EM2(SS)
MEYER, C. F., MM3(SS)
MILLER, B. D., SN
MILLS, J. W., ETR2(SS)
MILTNER, G. A., MM1(SS)
MIYABARA, R. S., CS1(SS)
MORTON, J., SN
MYERS, A. D., MM1(SS)
NEATHERY, R. E., HM1(SS)
NELSON, T. E., SN
NELSON, W. H., ET3
NOVAK, J. R., FTG2
O'KEEFE, J. E., FTM1

PACEY, H. B., MM3(SS)
PEARSON, R. A., IC3
PECK, S. R., SK3
PEDERSON, T., MM2(SS)
PELLEY, L. C., IC1(SS)
PERNICK, J. J. JR., TMSN
PESNELL, J. G., IC2(SS)
PHILLIPS, W. M., ENCA(SS)
REWINKEL, M. A., ET3
RHODES, F. S., MT3
RICHTAD, N. E., EN2(SS)
ROBERTS, W. J., FTG1(SS)
ROSS, J. M., MM2(SS)
RUSH, J. J., EN1(SS)
RUTZ, N. R., EN1(SS)
SCOTT, D. C., YN3(SS)
SEAVAR, A. J., QMC(SS)
SEVERNS, R. E., YN1(SS)
SHEETZ, P. A., FTM3
SHERRELL, D. M., SOSSN
SIMMONDS, R. J., EM2(SS)
SIMS, C. E., FTM3
SKALSKY, R. L., SOSSN
SMITH, B. E., EM1(SS)
SMITH, M. D., EM2(SS)
SNYDER, P. J., FTMSN
STEWART, J. J., MM1(SS)
STORCH, D. R., SN(SS)
TAYLOR, K. N., MM1(SS)
THOMPSON, C. R., MT3
TOMMY, B. L., EN2(SS)
TRAVELSTEAD, D. G., FA(SS)
TRAVER, R. E., EN1(SS)
TRUMBULL, J. R., FN(SS)
VIROSTOK, A. A., ETSN
WAIDELY, F. N., SO1(SS)
WARD, J. G., IC2(SS)
WARDELL, W. N., RM1(SS)
WELCH, E. G., ETR2
WENTELA, L. E., MT2
WILCOCK, M. C., FN
WILLIAMS, K. R., TM2(SS)
WILSON, D. L., CS1(SS)
WILSON, I. R., MM2(SS)
WRIGHT, E. L., RM2(SS)
WRIGHT, W. A., QM2(SS)
YOUNG, L. R., TM3(SS)

USS STONEWALL JACKSON (SSBN 634)

GOLD CREW ROSTER

CDR R. A. FROST, USN
Commanding Officer

LCDR J. B. RICHARD, USN
Executive Officer

OFFICERS

LT D. Y. SLOAN, USN

LT R. E. TENNENT, USN

LT W. H. PARKS, USN

LT F. C. KANE, USN

LT R. L. MARLOR, MC, USN

LT P. R. LATIMER, USN

LT G. G. MARBURGER, USN

LTJG J. T. O'FARRELL, USN

LTJG R. I. NEWTON, USN

LTJG L. L. SCHMELING, USN

ENLISTED

G. M. WHETSTONE, EMC(SS)
Chief of the Boat

AITCHISON, J. R., EN1(SS)
ANDERSON, G. S., SN
BAILEY, D. E., SOC(SS)
BALUT, R. J., SO1
BARLOW, E. A., FTM2(SS)
BECKDOL, R. W., MM1(SS)
BILDERBACK, J. L., EM2
BONIFAS, J. L., EM1(SS)
BONNER, F. E., RM1(SS)
BOYLE, G., EMC(SS)
BRADFORD, J. A., MM2(SS)
BROOKS, R. B., EMC(SS)
BUTTS, L. J., ETN3
CAHILL, J. E., ET1(SS)
CHRISTENSEN, G. N.,
ETR2(SS)
CLARK, R. E., ETN3
CLEARY, R. J., RMCS(SS)
COLEMAN, R. L., MM2(SS)
CURBOW, D. N., QM1(SS)
CURRAN, E. A., ETR3(SS)
D'ANGONA, J. S., MT3
DAVIS, N. K., RM2(SS)
DAVIS, W. H., SDC(SS)
DAVISON, R. M., FTG3
DOTTER, J. W., IC1(SS)
DOWDEN, R. C., SO2(SS)
DOYEL, K. E., IC2(SS)
DUBOIS, B. W., MMC(SS)
EARLS, H. C., TM3
EGGE, S. I., ETR3
ENGELHARD, J. D.,
MM1(SS)
EVANS, J. T., SD2
FARMER, J. D., FTM1(SS)
FOSTER, M. R., EM1
FOWLKS, B. G., TM2(SS)
FRIEDLINE, R. R., SO3(SS)
GENDRON, E. E., CS2(SS)
GINKENS, H. W., ICFN
GLADDEN, R. C., MT3
GODDARD, R. P., SOS2(SS)
GOODNATURE, W. P., TN
GREEN, F. J., ETR2(SS)
HARVEY, J. L., ET1(SS)

HAYES, J. D., EN1(SS)
HEIN, G. H., MM2(SS)
HEMMING, R. L., SK3
HENDERSON, K. O., ETR2
HICKS, J. J., HMC(SS)
HOEFT, L. A., FTC(SS)
HOLMES, J. D., ETR2(SS)
HOPKINS, N. E., FN(SS)
HULBERT, J. R., MMC(SS)
INACIO, M. D., MM1(SS)
IRVIN, P. J., ETN2
JACOBSEN, J. P., ETC(SS)
JETTE, T. E., MM3(SS)
JOHNSON, L. L., RM1(SS)
JONES, C. I., TM1(SS)
JONES, R. J., TM3(SS)
KEENE, M. K., SOSSN
KRUMREICH, D. R., FTM3
LARSON, D. F., MT3
LEASE, R. F., MT3
MAHLER, E. J., EM2
MARSHALL, J. H., QM1(SS)
MARTIN, G. W., EN2(SS)
MCCARTEY, R. E., EN3
MCKENZIE, J. O. JR.,
FTG2(SS)
MCLAUGHLIN, P. M., TM3
MCLAURIN, D. R., SN
MCMULLEN, G. P., IC2(SS)
MCNEILLY, R. P.,
MMC(SS)
MEEK, T. A., ET1(SS)
MESERVEY, D. R., EN1(SS)
MILLER, J. E., RM3(SS)
MILLER, T. G., EN2(SS)
MILLS, R. E., ETR3(SS)
MONROE, L. E., CS1(SS)
MORRIS, R. M., ENCM(SS)
MOSE, G. S., MM2(SS)
MOSER, T. C., TMC(SS)
MOREAU, J. A., FTM3
NICHOLAS, C. J., TM2
NIELSEN, D. A., ET2
O'DELL, M. J., FN
OLSEN, D., QM3

OLSON, S. E., MT2
OMAN, A. H. JR., TM2(SS)
PAGE, J. A., ETR3
PHILLIPS, J. A., IC3(SS)
POLLARD, J. M., SN
POND, J. D., TM3
PRINCE, J. R., EM1(SS)
RACKLEY, E. L., CS3(SS)
RAUER, R. C., TMSN
REED, M. J., ETR2(SS)
RICE, D. A., ENFN(SS)
RICHARDSON, R. D., FN
RICKETSON, J. L., SK1(SS)
RIDLEY, W. D., ETC
ROBICHAUX, V. I., MT2
ROGERS, L. A., MM2(SS)
RYAN, W. F., QM1(SS)
SCHMIDT, R. O., ET3
SCHNEIDER, R. T., YN2(SS)
SHAMBO, R. G., SN
SIMMS, B. G., N
SIPOS, S., EN2(SS)
SKILLRUD, H. M., FTM3
SMITH, J. D., MTC(SS)
SMITH, J. T., MT3
SONS, H. L., IC2(SS)
SULLIVAN, M. J., IC1(SS)
SUTTON, P. N., FTM2
SWANSON, R. S., MM2(SS)
SWANSON, L. T., MMC(SS)
TAYLOR, J. H., TM2(SS)
TAYLOR, R. D., QM2(SS)
TAYLOR, G. G., RM3(SS)
TROYON, C. A., YN1(SS)
TURNER, B. F., MT3
TYLER, D. L., FN(SS)
WARDEN, J. H., MM1(SS)
WELCH, R. P., SN
WELTON, L. G., MM2
WILLIAMS, R. E., SA
WINGFIELD, R. O., EN3(SS)
ZIMMERMAN, J. E., EM1(SS)
ZIMMERMAN, E. E., IC2(SS)
ZUCCO, A. J., SN

