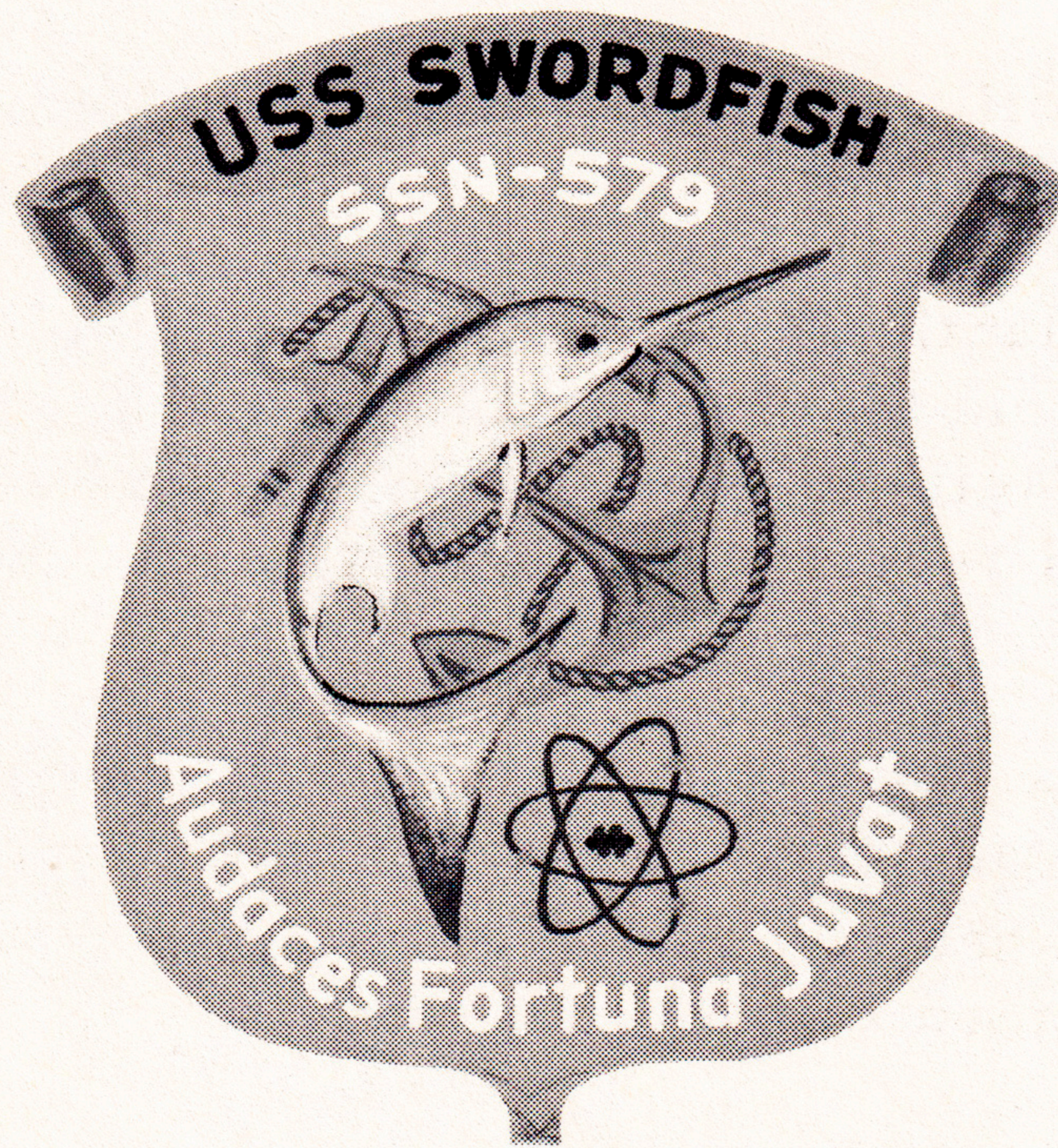


*Aloha*



UNITED STATES NAVY

## HISTORY OF THE USS SWORDFISH (SS(N) 579)

The USS SWORDFISH is the second United States Submarine to bear that name. She is named for the swordfish, the only representative of the Xiphiidae family of fish to be known also as the broadbill.

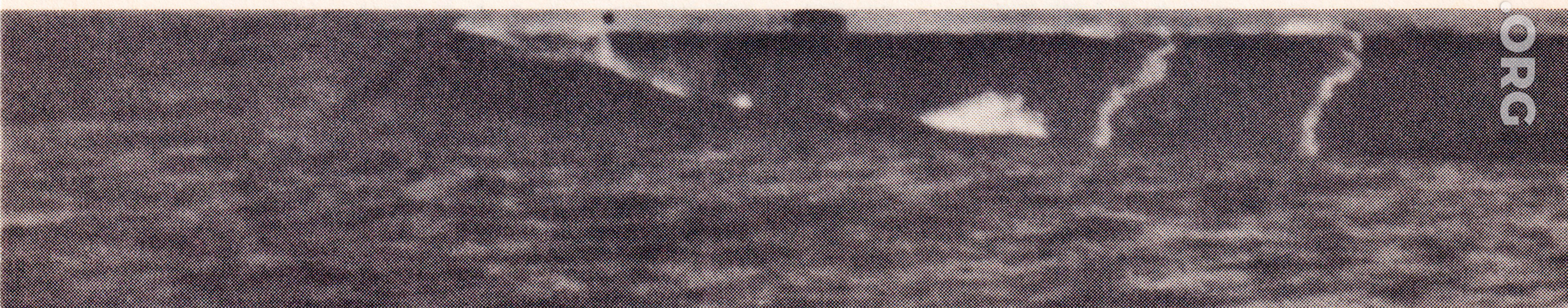
This ship was authorized in 1955, and the designation SSN-579 assigned. The keel was laid at the U.S. Naval Shipyard, Portsmouth, New Hampshire, on 25 January 1956 and launched 27 August 1957. The ship was sponsored by Mrs. Eugene Carter Rider, widow of the late Commander Keats Edmund Montross, Commanding Officer of the first SWORDFISH when lost with all hands.

SWORDFISH, under the command of Commander S. D. Cramer, Jr., USN, the first Commanding Officer, began her life operating in the Atlantic Ocean. During 1959, SWORDFISH left the Atlantic Fleet, passed through the Panama Canal, and became the first nuclear powered submarine to operate in the Pacific Fleet. Her home port was assigned and SWORDFISH received her first Aloha as she steamed into Pearl Harbor.

Operations began immediately, and SWORDFISH began compiling her miles steamed. Prior to her first core renewal, SWORDFISH had steamed 114,000 miles; 100,000 miles of which were steamed submerged.

During 1960 SWORDFISH deployed to the Western Pacific twice and had the honor of taking two heads of state to sea on guest cruises. They were President Chiang Kai Shek of Nationalist China and President Carlos P. Garcia of the Philippines.

After having completed the above operations, SWORDFISH returned to the West Coast and received her first major shipyard overhaul and core renewal at Mare Island Naval Shipyard.



# U.S.S. SWORDFISH

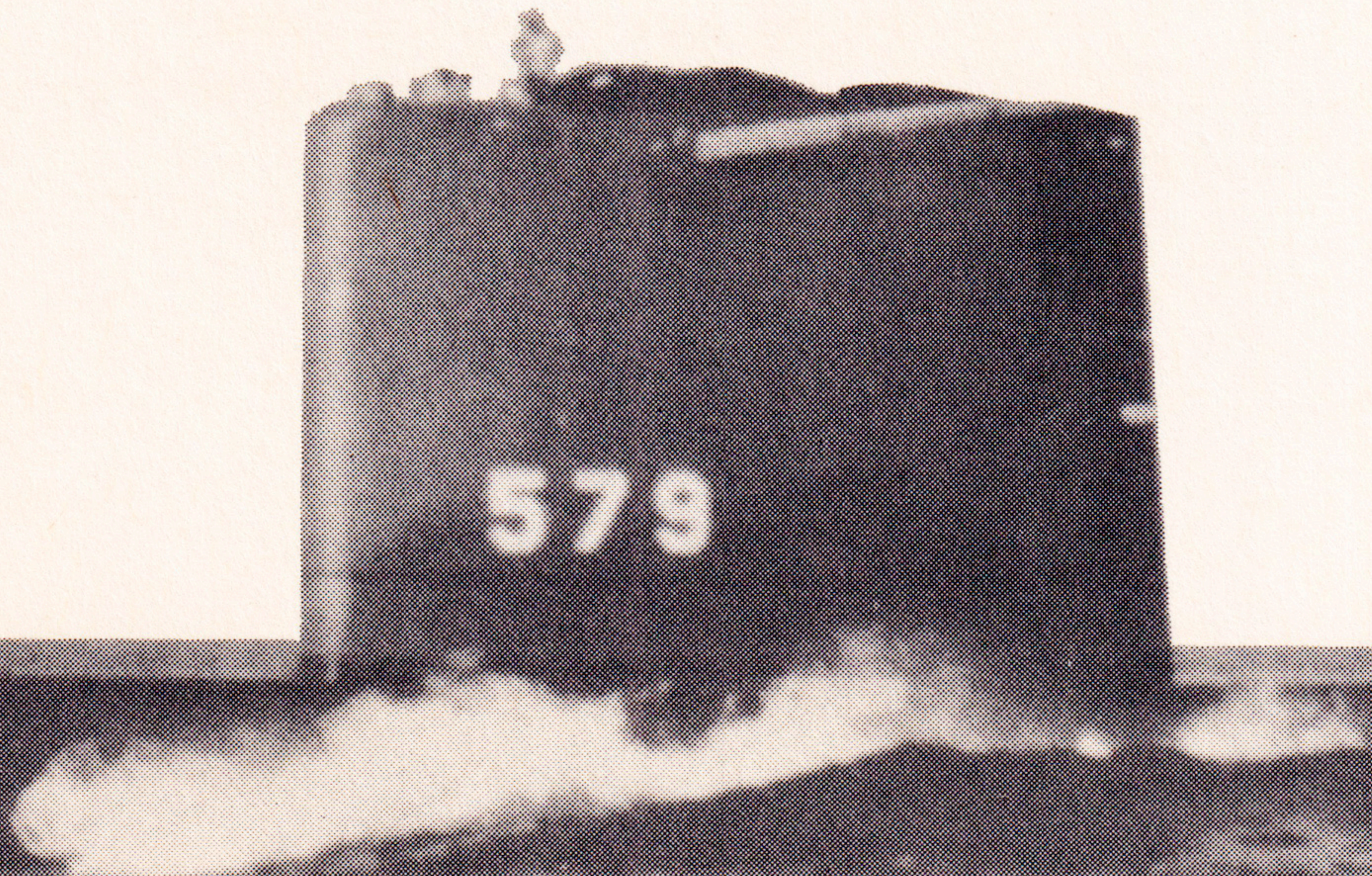
(SS(N)579)

★ ★ ★ ★ ★

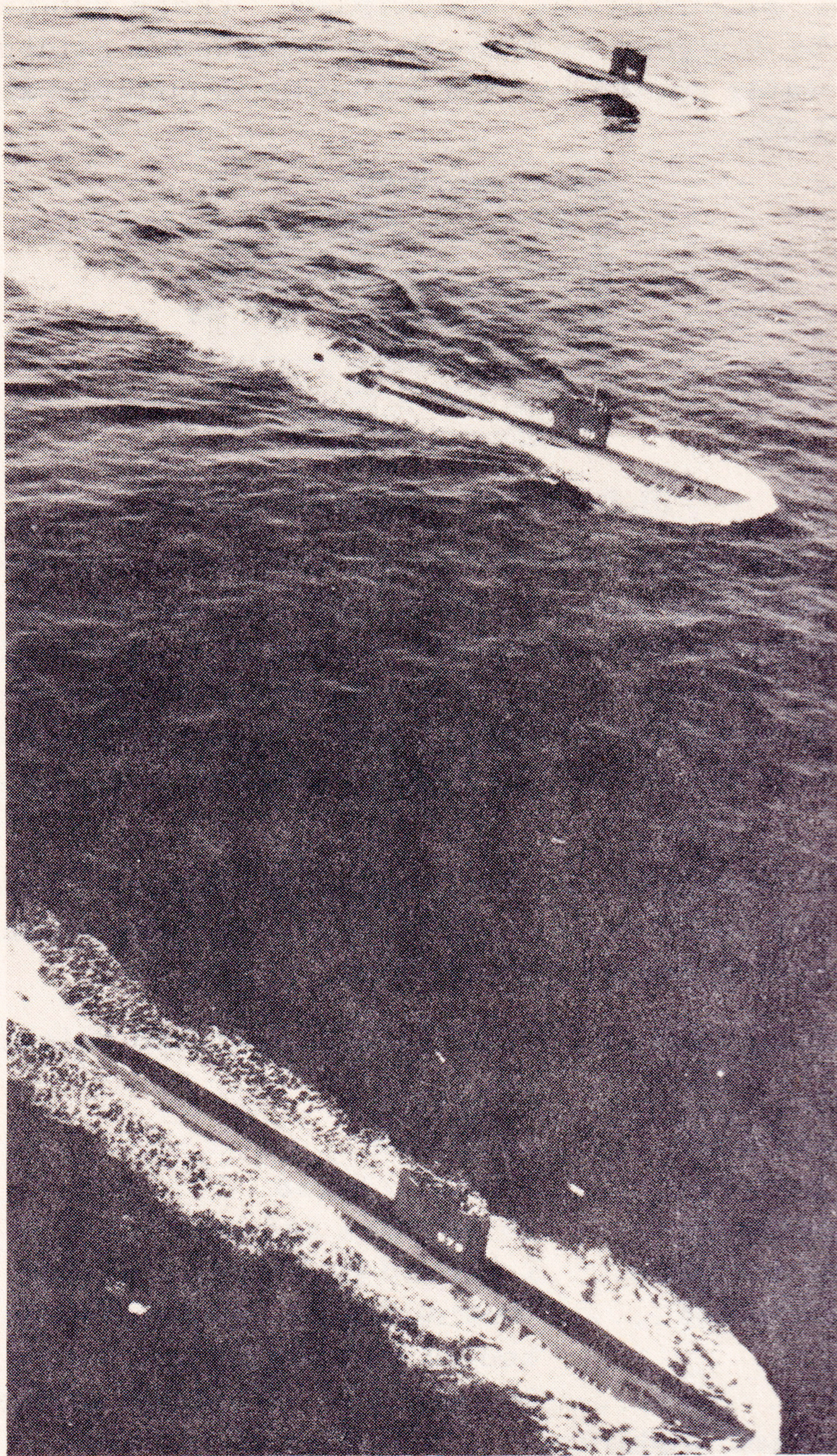
Keel laid .....	25 January 1956
Launched.....	27 August 1957
Provisional acceptance .....	2 June 1958
Placed in Service.....	12 July 1958
Commissioned .....	15 September 1958

★ ★ ★ ★ ★

AUDACES FORTUNA JUVAT  
"Fortune Favors the Bold"







USS SEADRAGON SSN 584  
USS SARGO SSN 583  
USS SWORDFISH SSN 579

THE BARNETT

1910

1910

THE BARNETT

1910

THE BARNETT

1910