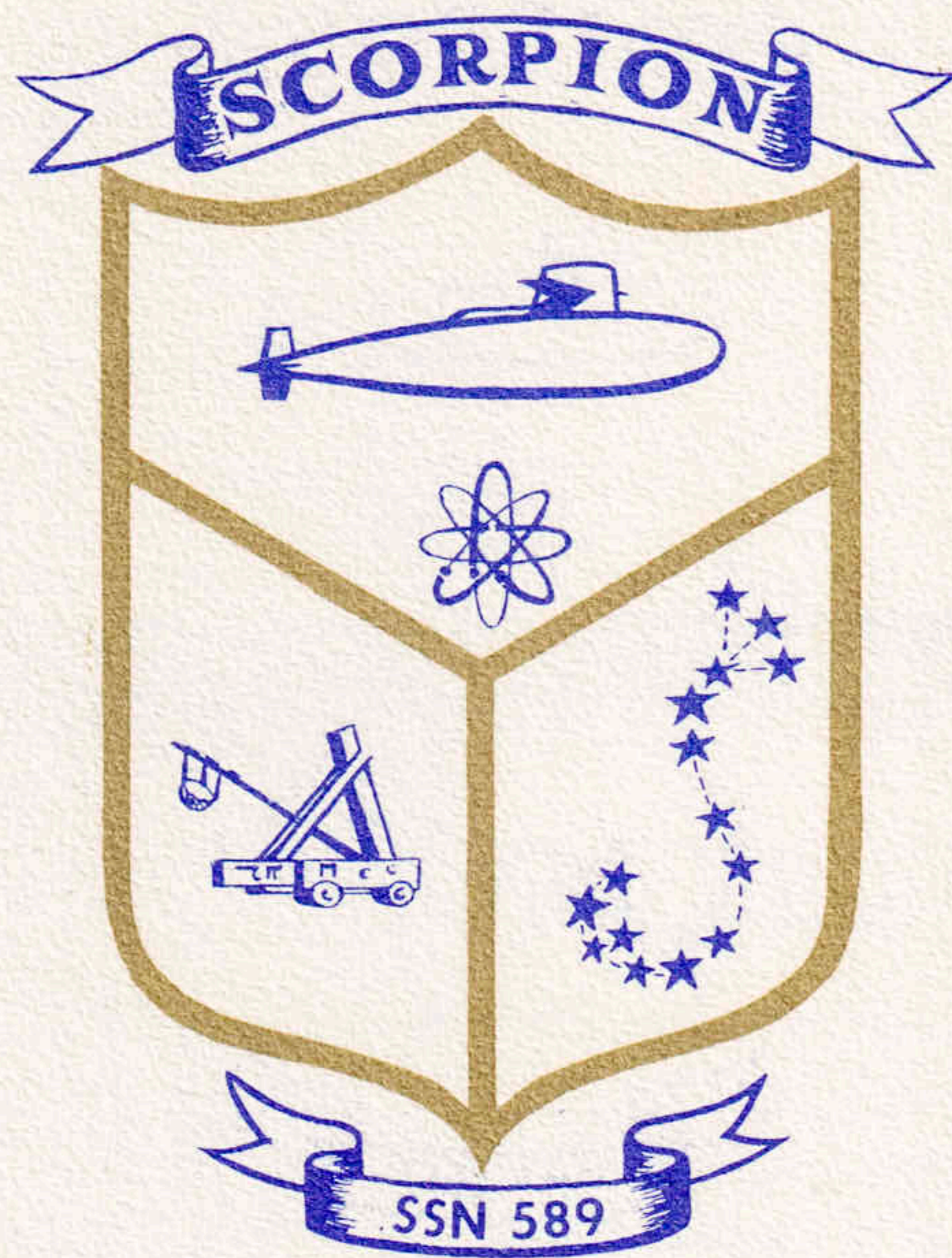


GOLDWATERBOATS.ORG

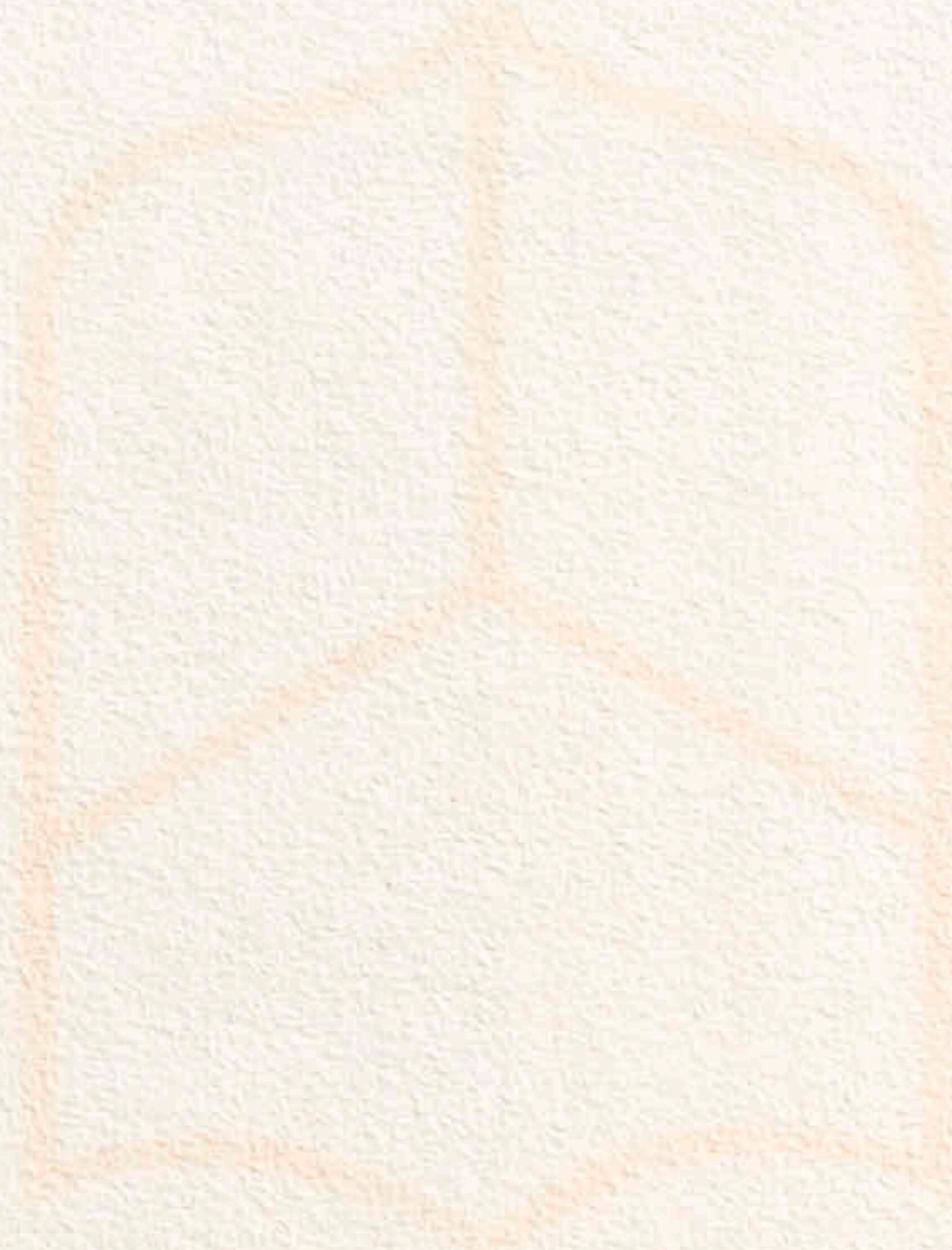
Welcome to the **USS SCORPION**



The officers and crew of Scorpion are proud of our ship and hope that during your visit you will come to share some of our enthusiasm for her. We are always pleased to explain her workings so please don't hesitate to ask questions. Naturally, certain pieces of equipment are classified and we are sure you will understand if sometimes your questions are answered in general terms.

I am certain that all hands will assist you in making your visit pleasant, enjoyable and profitable.

Commanding Officer



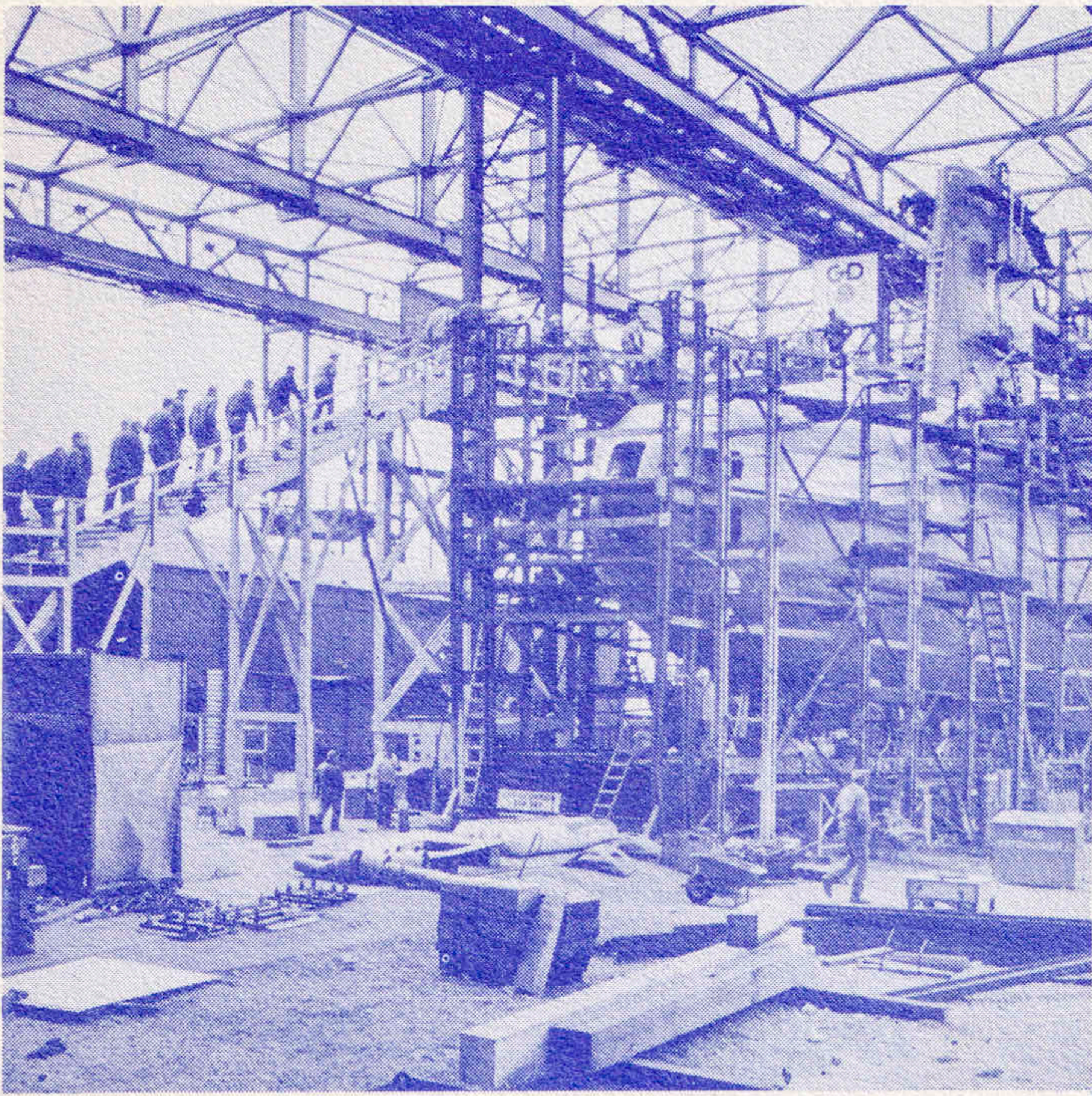
USS SCORPION

The commissioning of U.S.S. SCORPION on 29 July 1960 as the 12th nuclear submarine to join the fleet marked another increase in the power of the United States Navy. As a member of a class of the fastest and most maneuverable submarines afloat, SCORPION became a valuable addition to the fleet charged with protecting freedom around the world. Joining our powerful naval striking force, she serves as an additional warning to aggressors that force will be met with force.

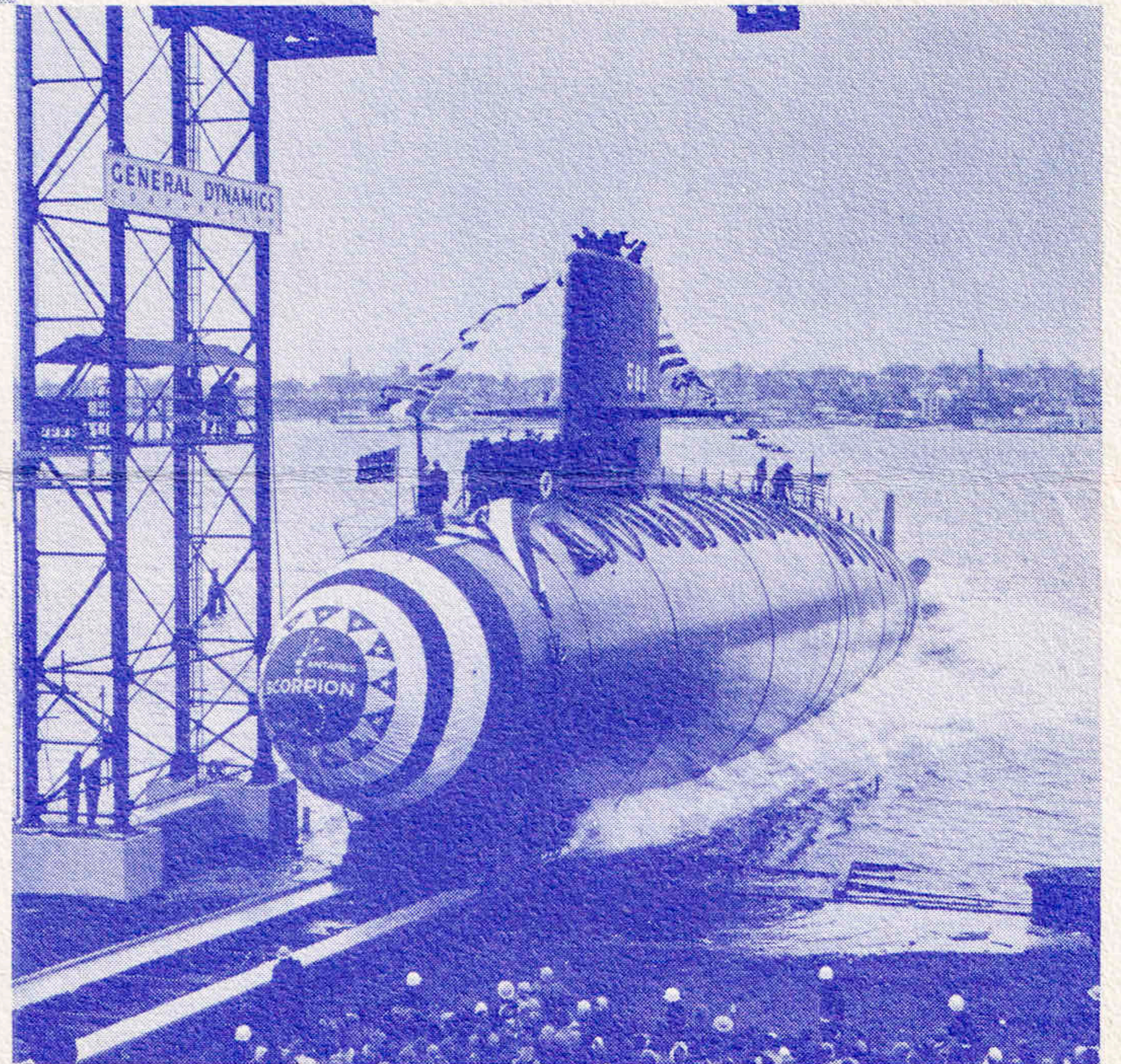
SCORPION is probably the first submarine in history to have the keel laid twice. On 1 November 1957, the keel was laid at General Dynamics Corporation Electric Boat Division, Groton, Conn. Nearing completion it was redesignated U.S.S. GEORGE WASHINGTON SSBN 598, cut in half and lengthened 117 feet to become the first Fleet Ballistic Missile submarine. The keel was then relaid on 20 August 1958 for the present SCORPION and 22 months later she went on initial sea trials.

Sponsor of SCORPION is Mrs. Elizabeth S. Morrison, daughter of Cdr. Maximilian G. Schmidt who was Commanding Officer of the first submarine (SS278) to bear the name SCORPION at the time she was lost in action in 1944.

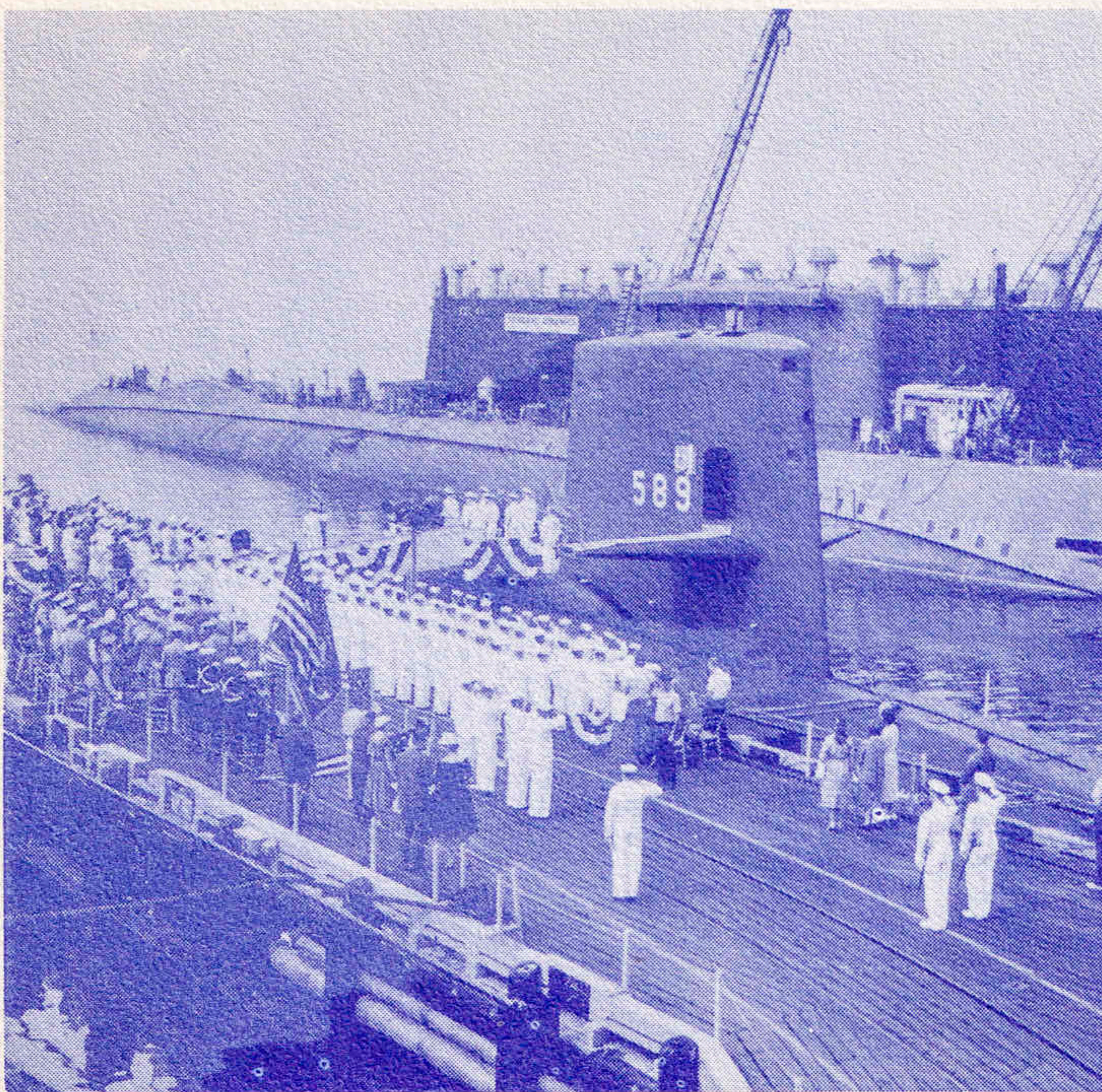
In addition to SS278, four United States ships have carried the name SCORPION and together they have served in five years with distinction. The fourth SCORPION participated in the geographical surveys for the Panama Canal.



CONSTRUCTION



LAUNCHING



COMMISSIONING

USS SCORPION SSN 589

STATISTICS

TYPE: High speed attack, first of 588 class to go to sea.

LENGTH: 252 feet.

DISPLACEMENT: 3,000 tons.

PROPULSION: Steam turbines driving a single screw. Steam is produced by heat from an S5W pressurized water-cooled reactor.

SPEED: Greater than 20 knots submerged.

DEPTH: Greater than 400 feet.

BUILDER: Electric Boat Division of General Dynamics Corporation, Groton, Conn.

KEEL LAID: 20 August 1958.

LAUNCHED: 19 December 1959.

INITIAL SEA TRIALS: 26 June 1960.

COMMISSIONED: 29 July 1960.

FIRST EXTENDED OPERATIONS: 30 August 1960.

COMPLEMENT: 8 Officers and 86 Enlisted men.