



COMMISSIONING

UNITED STATES SHIP

**TINOSA**

**SSN 606**

17 OCTOBER 1964

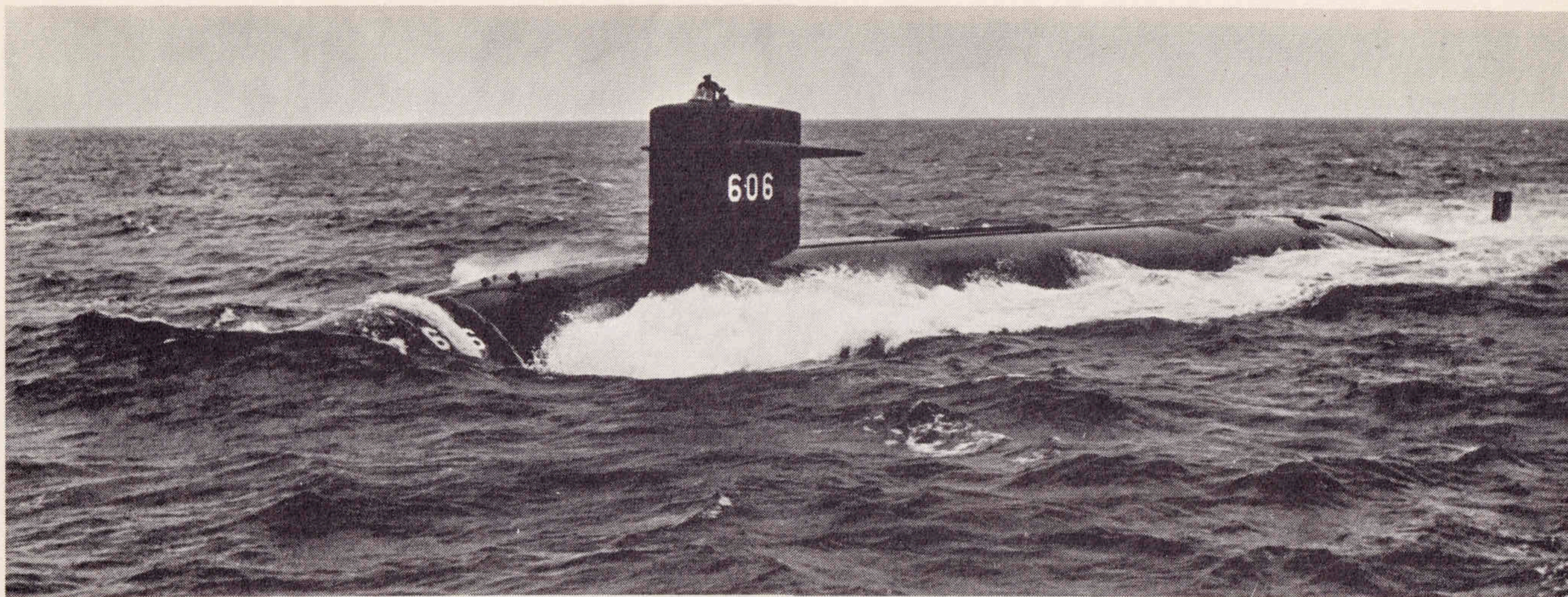
PORTSMOUTH NAVAL SHIPYARD  
PORTSMOUTH, NEW HAMPSHIRE



## NAVAL COMMISSIONING

The commissioning ceremony marks the initiation into service of a ship of the operating forces of the U. S. Navy. Upon commissioning U. S. S. TINOSA (SSN 606) becomes the responsibility of her Commanding Officer, officers, and crew, who then have the duty of making and keeping her ready for any service demanded by our country in peace or war.



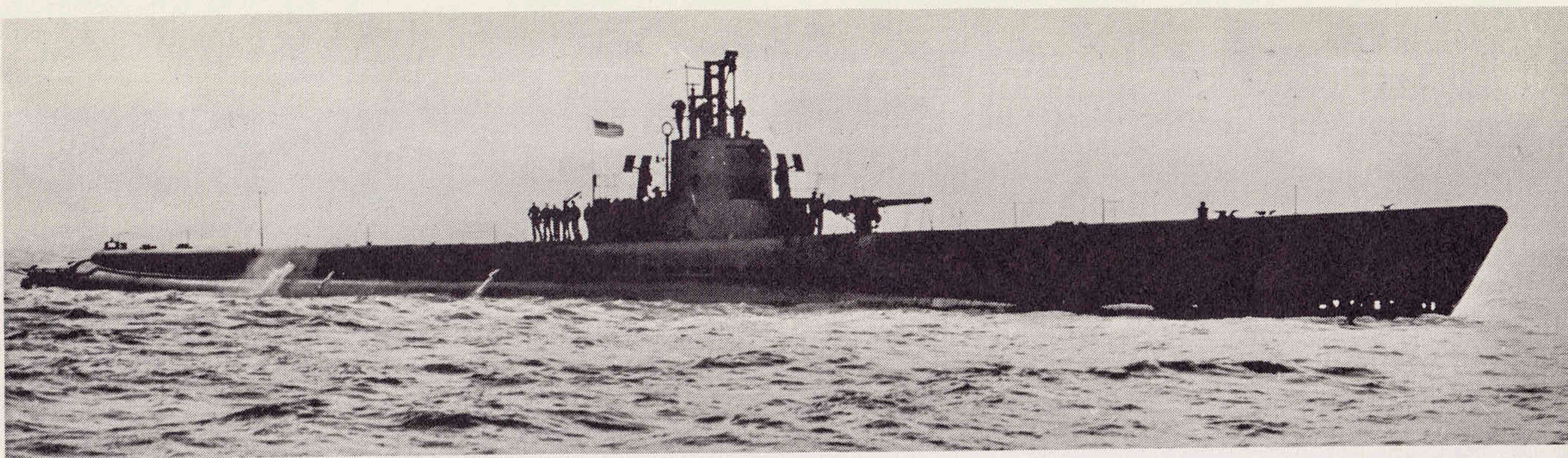


The TINOSA, shown above during sea trials, is a fast attack class, nuclear powered submarine. She is 278 feet long, has a beam of 31 feet and displaces 4300 tons submerged. Her speed is in excess of 20 knots.

Construction was begun with keel laying 24 November 1959. She was launched 19 December 1961 and began sea trials 13 September 1964.

Her primary war time mission is to detect, track and kill enemy submarines. In order to achieve this she has been equipped with the latest advances in sonar and fire control equipment, and can launch all types of submarine torpedos and the SubRoc missile.





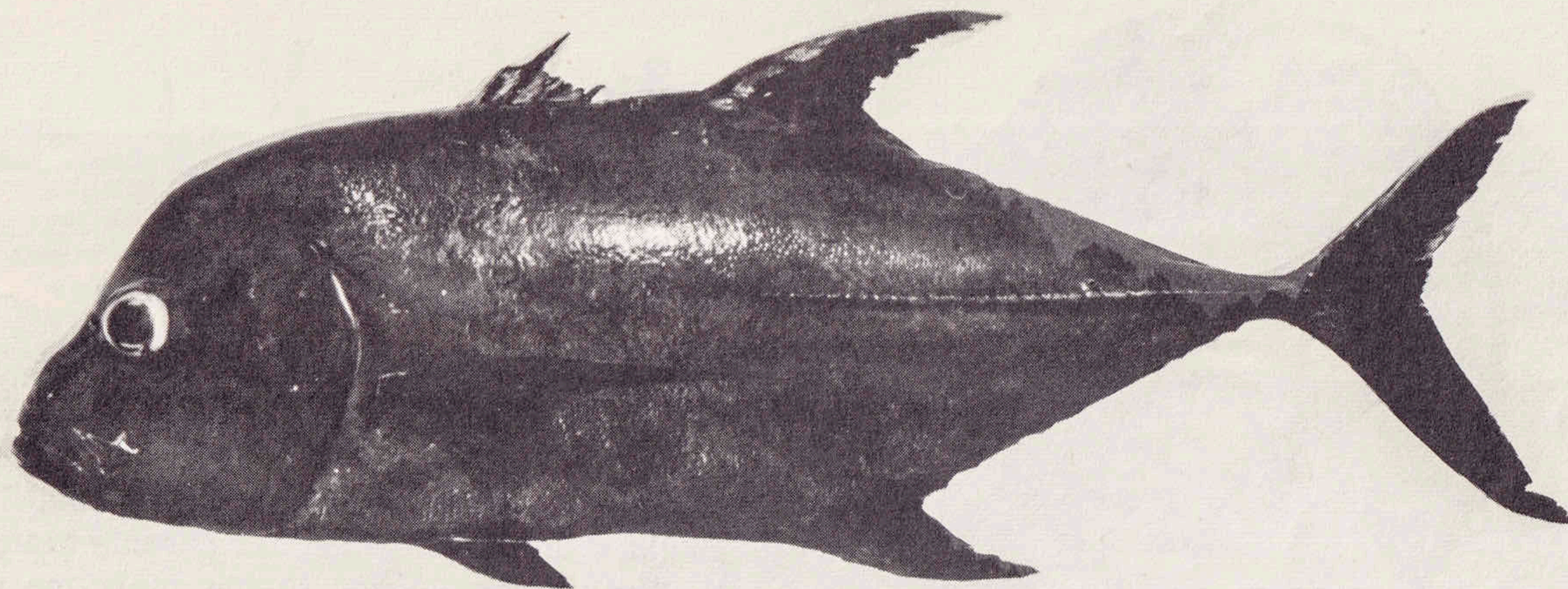
The first USS TINOSA (SS 283) was built by Mare Island Naval Shipyard. She was commissioned 15 January 1943, under the command of Lieutenant Commander Lawrence R. Daspit, now Rear Admiral Daspit, Commandant Sixth Naval District.

The SS 283 made 12 World War II patrols, damaging 12 and sinking 22 enemy ships. Included among her outstanding achievements were collection of information which substantially improved torpedo reliability; and participation in the 1945 "Hellcat Raid" into the Sea of Japan for mine detection studies. Training for the later mission was directed by Commander W. B. "Barney" Sieglaff, now Rear Admiral Sieglaff, Commandant, First Naval District.

TINOSA and her crew earned 18 Bronze Stars, 9 Silver Stars, 1 Legion of Merit, 3 Navy Crosses and the Presidential Unit citation.

The SS 283 was stricken from the Navy List of Ships 18 February 1959. Subsequently the hull was used in submarine damage control and salvage operations.





### TINOSA FISH

The fish for which the ship is named (*Caranx lugubris*) reaches a length of 30 inches and has a sooty blackish, or grayish brown colored body. Though found in warm waters of both the Atlantic and Pacific Oceans, it is frequently seen only about Cuba where its common name, Tinoso, originated. The Tinoso has yellowish tipped pectoral and caudal fins, a large head and belongs to the Caragnidae along with the better known Pompano, Runner, and Jack. Its flesh is often regarded as poisonous in Cuba and its sale there, at least at one time, was forbidden.



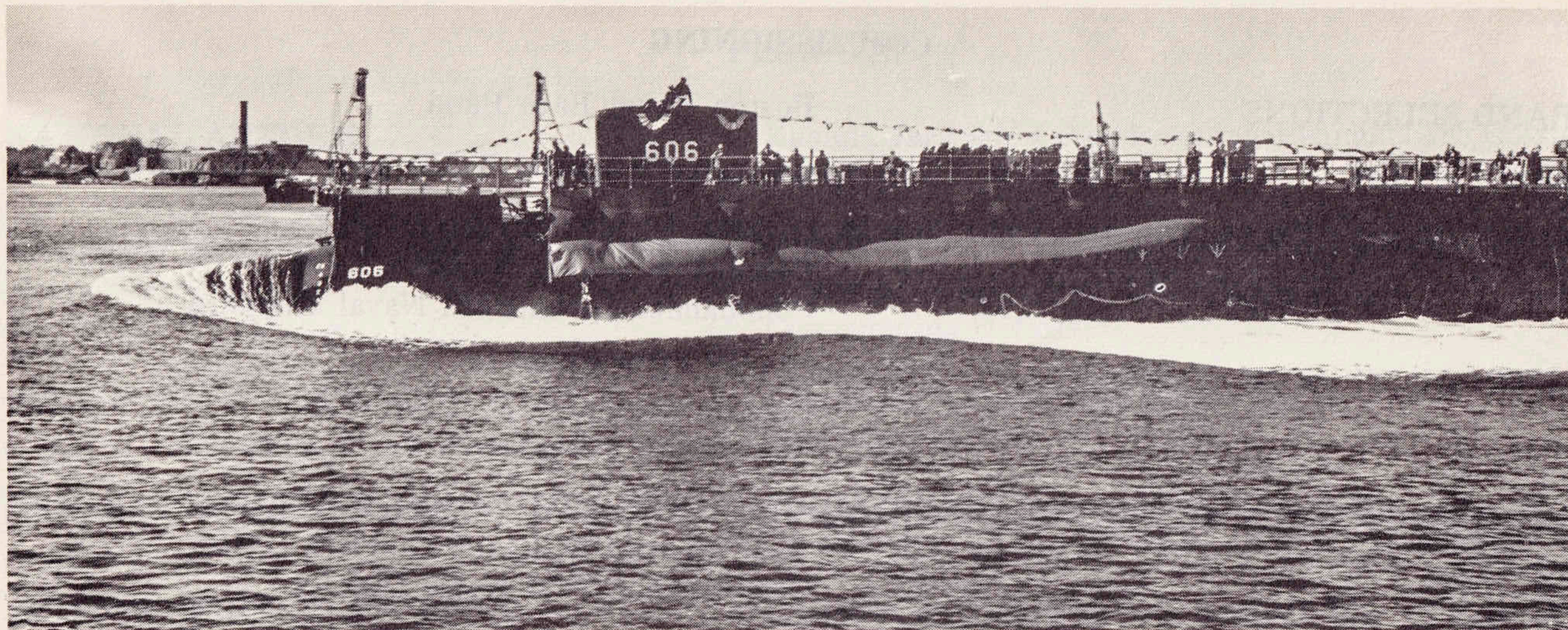


## **SPONSOR**

**Mrs. Samuel S. Stratton**

Mrs. Stratton, wife of the Honorable Samuel S. Stratton, Congressman, Thirty-Fifth District, New York, was born Joan Harris in Dublin, Ireland. She resided in Belfast, Ireland and London, England until 1941 when her parents brought her to Washington. Prior to her marriage in 1947 she was employed in Washington, D. C. by the British Purchasing Commission and the Embassy of India. Congressman and Mrs. Stratton, with their five children, now reside in Washington, D. C.





## LAUNCHING

19 December 1961

The TINOSA was launched 19 December 1961 at Portsmouth. The Principal Address was delivered by Rear Admiral Lawrence R. Daspit, then Deputy Commander, Submarine Forces, U. S. Atlantic Fleet. He had been the first Commanding Officer of the first TINOSA.

TINOSA was the third fast attack class submarine to enter the water. Because of the bow first launching position and the weight of the submarine special bouyancy tanks had been added to the bow.



## COMMISSIONING

### BAND SELECTIONS

Boston Naval Base Band

### INVOCATION

Commander Donald R. Caughey, CHC, USN

### WELCOMING REMARKS AND INTRODUCTION OF DISTINGUISHED GUESTS

Captain William C. Hushing, USN  
Commander Portsmouth Naval Shipyard

### INTRODUCTION OF COMMANDANT FIRST NAVAL DISTRICT

Captain William C. Hushing, USN  
Commander Portsmouth Naval Shipyard

### INTRODUCTION OF COMMANDER SUBMARINE FORCE, U. S. ATLANTIC FLEET

Rear Admiral William B. Sieglaff, USN  
Commandant First Naval District

### REMARKS AND INTRODUCTION OF PRINCIPAL SPEAKER

Vice Admiral Vernon L. Lowrance, USN  
Commander Submarine Force, U. S. Atlantic Fleet

### ADDRESS BY PRINCIPAL SPEAKER

The Honorable Thomas J. "Tom" McIntyre  
United States Senator, State of New Hampshire

### READING OF NAVY DEPARTMENT ORDERS TO COMMISSION SHIP

Rear Admiral William B. Sieglaff, USN  
Commandant First Naval District



## PROGRAM

### NATIONAL ANTHEM

Ensign, Jack and Commissioning Pennant Are Hoisted  
The Ship Is Now In Commission

### READING OF COMMANDING OFFICER'S ORDERS AND ASSUMPTION OF COMMAND

Commander Robert B. Brumsted, USN  
Commanding Officer

### SETTING OF THE WATCH

Lieutenant Commander Ordell Smith, USN  
Executive Officer

### BREAKING OF THE PERSONAL FLAG OF

Vice Admiral Vernon L. Lowrance, USN  
Commander Submarine Force, U. S. Atlantic Fleet

### INTRODUCTION OF SPONSOR

Commander Robert B. Brumsted, USN  
Commanding Officer

### REMARKS BY SPONSOR

Mrs. Samuel S. Stratton

### ACKNOWLEDGEMENTS

Commander Robert B. Brumsted, USN  
Commanding Officer

### BENEDICTION

Lieutenant Kenneth F. Kieffer, CHC, USN

### BAND SELECTIONS

Boston Naval Base Band





## COMMANDING OFFICER

**Commander Robert B. Brumsted, USN**

Commander R. B. Brumsted, U. S. Navy, the Commanding Officer of USS TINOSA (SSN 606), a native of Milwaukee, Wisconsin, was graduated from the U. S. Naval Academy in 1945. His previous sea duty included tours aboard LSM(R) 512 and the submarines CUTLASS, CROAKER, LIONFISH, and TUSK. In 1957 he completed service as Assistant U. S. Naval Attache to Australia and New Zealand. Command of the submarine BANG preceded his assignment to nuclear power training in 1960. He spent one year under instruction in the office of the Assistant Director for Naval Reactors, Division of Reactor Development, Atomic Energy Commission, in Washington, D. C. prior to reporting to TINOSA.

Commander Brumsted is married to the former Margareth Louise Rolfs, also of Milwaukee. With their three children they are currently residing in Kittery Point, Maine.



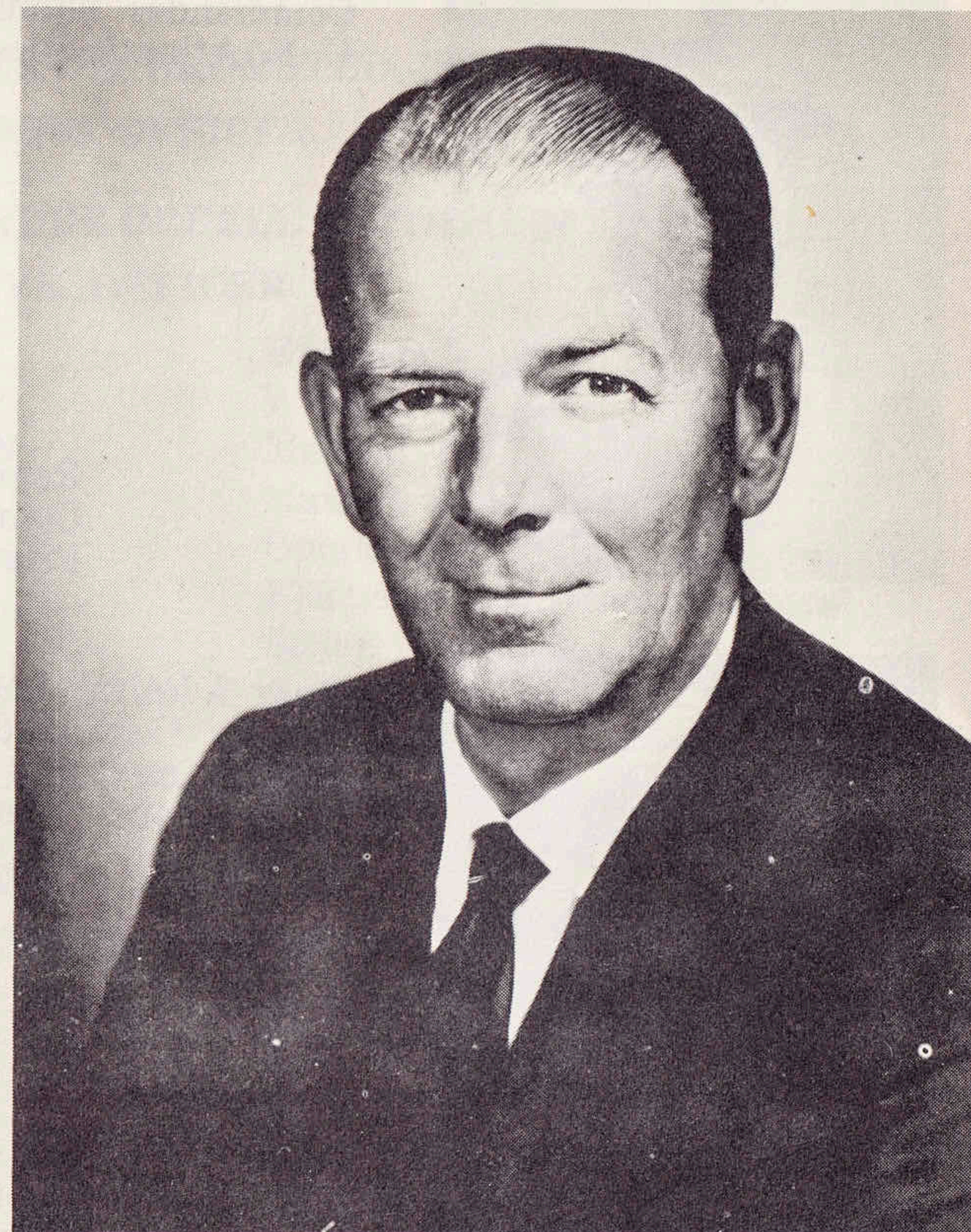
**PRINCIPAL SPEAKER**  
**THE HONORABLE THOMAS J. McINTYRE**  
**UNITED STATES SENATOR**  
**STATE OF NEW HAMPSHIRE**

Senator McIntyre, Democrat, New Hampshire, was elected to the Senate in November 1962. He is a graduate of Dartmouth College and Boston University Law School. His wife, Myrtle Clement McIntyre, is a former Democratic National Committeewoman. They have one daughter, Martha Grey McIntyre, a high school student.

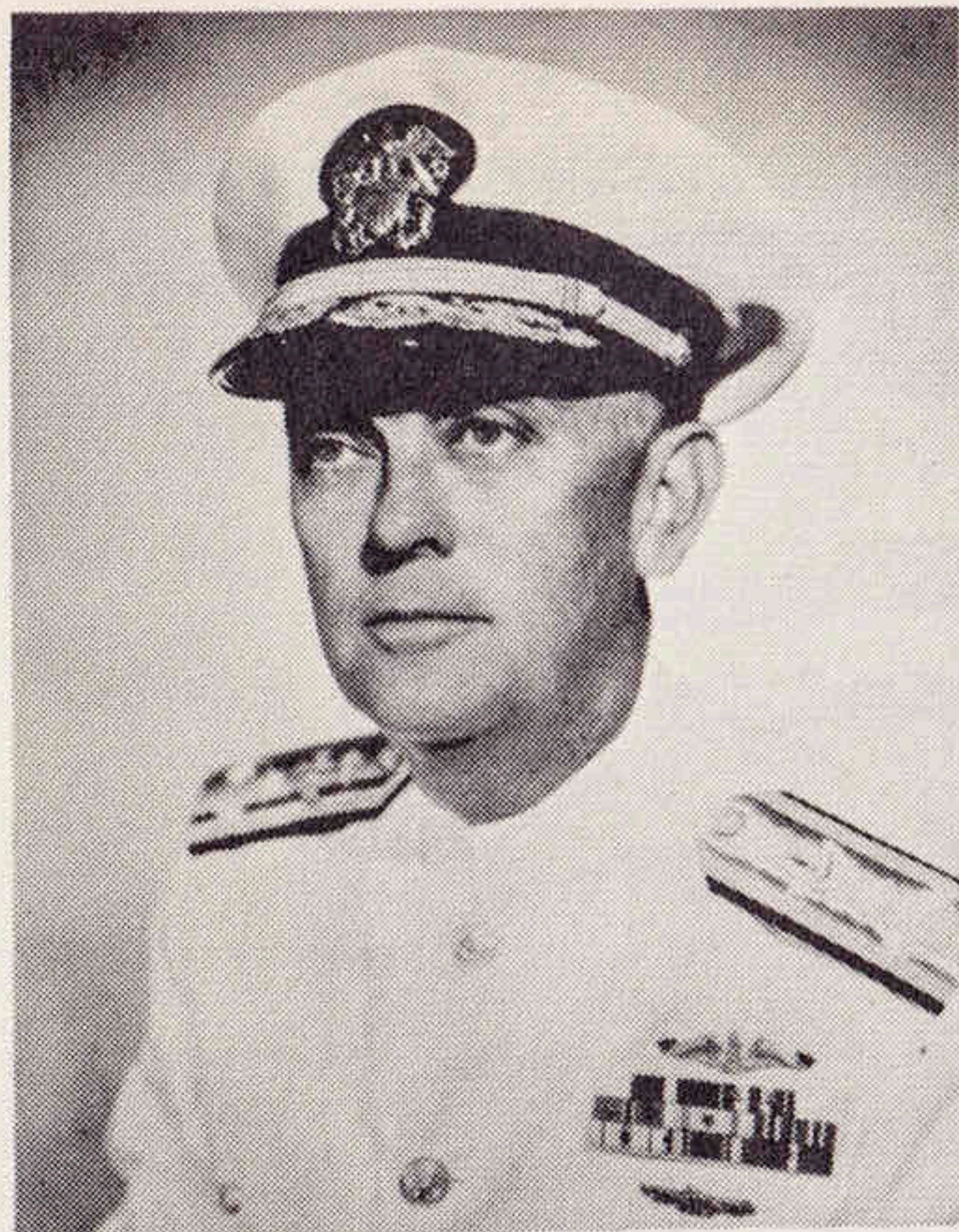
During World War II the Senator served in the 376th Infantry Regiment, 94th Division, 3rd Army, retiring as a major in 1946. He was awarded the Bronze Star with Oak-Leaf cluster, Combat Infantry Badge and Battle Stars for the Ardennes, Central Europe, Rhineland and Northern France Campaigns.

Senator McIntyre has been active in many civic organizations in Laconia and New Hampshire. He serves on the Executive Committee of the New Hampshire Bar Association and was President of the Belknap County Bar Association from 1961-1963.

In the Senate he serves on the Armed Services, Banking and Currency and District of Columbia Committees.







Vice Admiral V. L. Lowrance  
Commander Submarine Force  
U. S. Atlantic Fleet



Rear Admiral W. R. Sieglaff  
Commandant  
First Naval District



Rear Admiral J. A. Tyree  
Deputy Commander  
Submarine Force  
U. S. Atlantic Fleet



Captain W. C. Hushing  
Commander  
Portsmouth Naval Shipyard



**COMMISSIONING CREW  
OFFICERS**

**COMMANDER ROBERT B. BRUMSTED, USN  
COMMANDING OFFICER**

**LIEUTENANT COMMANDER ORDELL SMITH, USN  
EXECUTIVE OFFICER**

LCDR Clarence E. MOORE, USN	Engineer
LCDR Walter J. COAKLEY, Jr., USN	Weapons
LCDR Gordon J. WEIR, Jr., (MC) USN	Medical
LCDR Robert M. MORRISON, USN	Main Propulsion Assistant
LT Richard H. SCALES, USN	Operations
LT Zachariah T. PATE, Jr., USN	Electrical and Reactor Control
LTJG Richard M. BUTROVICH, USN	Sonar
LTJG Robert B. WILKINSON, Jr., USN	Auxiliaries
LTJG Robert S. BADGETT, USN	Communications
LTJG Alan R. INGRAM, USN	Commissary

**CHIEF PETTY OFFICERS**

**R. B. MARTIN, ETCM(SS) Chief of the Boat**

M. A. BAILEY ENCA (SS)	R. L. RUEST TMCA (SS)
C. E. BEARD ICCA (SS)	J. C. SCHWEITZER ENCA (SS)
P. M. JOHNSON SOCA (SS)	R. E. SIDLE MMCA (SS)
J. E. PARR QMCA (SS)	R. C. SMITH CSCA (SS)
K.M. RIPLEY ICCA (SS)	D. H. WRIGHT ETC (SS)
F. D. PATTERSON RMC (SS)	J. G. TUCKER HMCA (SS)
	W. M. ROBERTS SOCA (SS)



## ENLISTED

E. T. AKEY EM1(SS)  
J. W. ANDERSON SO1(SS)  
J. F. BERARDI ETR3  
G. L. BROWN EN2  
W. T. BURNHAM EN1(SS)  
J. B. CAMERON CS1  
W. H. CANDLER Jr., RM1(SS)  
P. CHESTNUT RM1(SS)  
T. E. CLARK ETR3  
W. E. CLARK EM2(SS)  
E. CONNOR QM2  
W. E. CRAM TM2  
E. B. CURTIS FTG1(SS)  
J. E. DAVENPORT EN3  
S. J. DAVIS IC2  
C. H. DENNIS SN  
R. W. DILKS ETR2(SS)  
J. D. ESTEL FTG1  
D. J. FERDULA MM2  
W. H. FILLMORE EM1(SS)  
J. C. FITZGERALD ETR2(SS)  
W. R. FLISHER ET1(SS)  
C. C. GILBERT, Jr., MM2  
J. E. GOLDMAN MM1

J. L. GREEN SD2  
J. M. GULICK EN1(SS)  
T. J. HEYBRUCK IC1(SS)  
R. A. HIRTZEL IC1(SS)  
J. A. HOWARD EM1(SS)  
B. F. JONES YN1(SS)  
C. R. JONES SA  
M. D. KILMER SN  
J. B. KIRKLAND YN2  
E. K. KOSLOVIC FTG1(SS)  
G. E. KOSNOSKI FA  
T. H. KROHN IC2(SS)  
H. J. KURA EN1  
R. A. LANCASTER RM1(SS)  
C. F. LEVANDOSKI IC3  
R. LITSCHER ET1(SS)  
M. D. MALTSBERGER EN3  
J. R. MARTIN ET1(SS)  
J. W. MAYBERRY IC2(SS)  
R. F. McCAFFERTY SA  
W. G. McKEE IC3  
A. R. McREE MMI  
J. R. MORROW, Jr., TM1(SS)  
H. F. MURPHY EN1(SS)

D. E. NEILSON EM1(SS)  
W. T. OLSEN EM1(SS)  
P. E. O'NEILL QM1(SS)  
V. H. RASCH, Jr., CS1(SS)  
C. H. RHOAD MM1(SS)  
H. F. RULAND TM2(SS)  
C. SACHARSKY EN1(SS)  
J. R. SANDA IC1(SS)  
R. F. SEALES, Jr., EM1  
R. J. SIMONEAUX SK1  
J. F. SULLIVAN, Jr., ENFA  
J. P. TERP EN3  
T. M. TONGUE MM1(SS)  
T. O. TURNER IC1(SS)  
L. M. VELKOVICH QM3(SS)  
R. D. WALKER MM2  
J. E. WARD SO1(SS)  
J. L. WATKINS TN(SS)  
G. E. WATSON MM1  
W. WAUGH SD1(SS)  
W. N. WENDLING, Jr., ENFA  
S. M. WESTHOFF MM2(SS)  
J. E. WHITTEMORE EN1(SS)  
R. E. WITTE SO1(SS)







