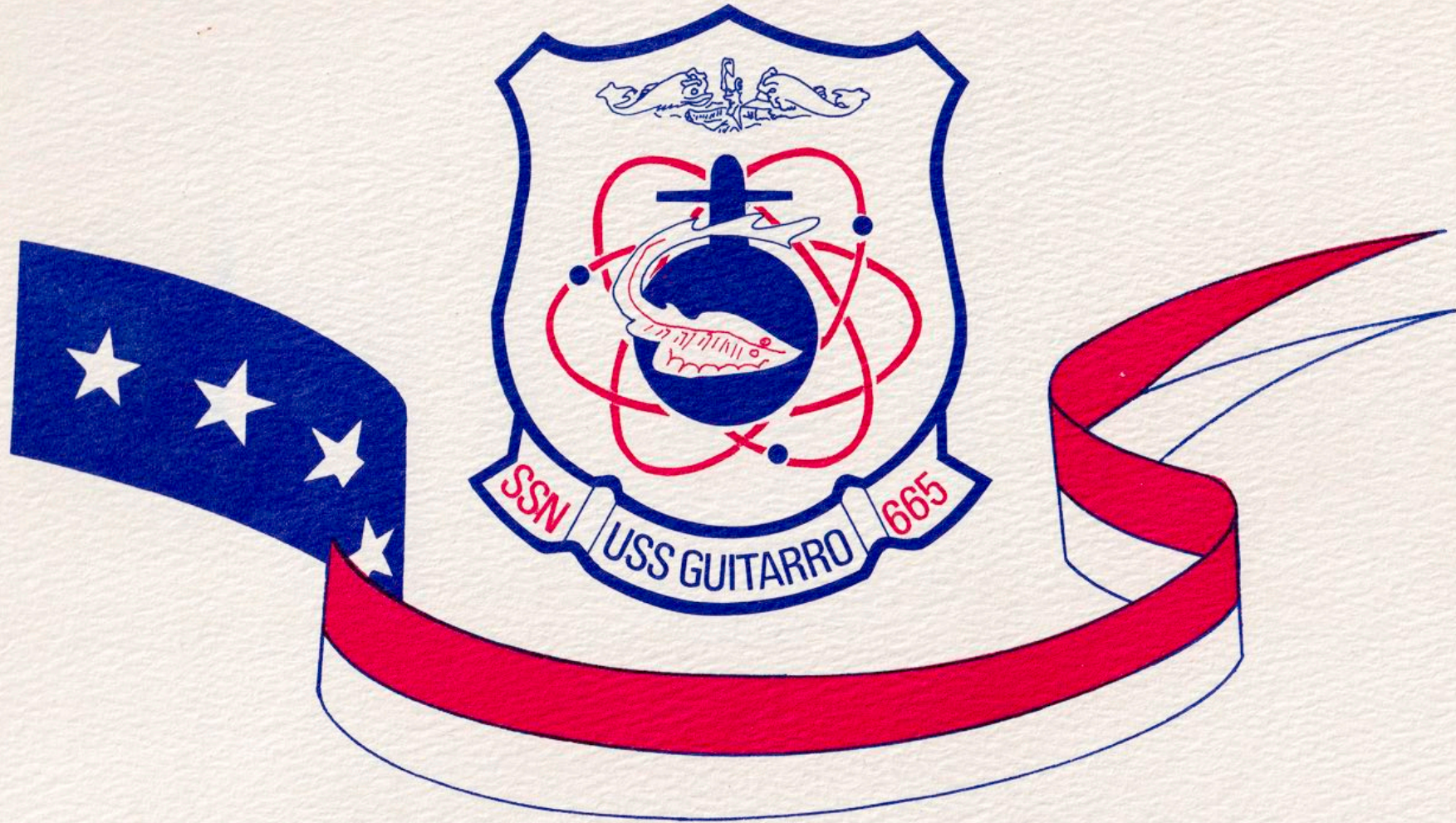


USS GUITARRO (SSN 665)



COMMISSIONING

USS GUITARRO (SSN 665)

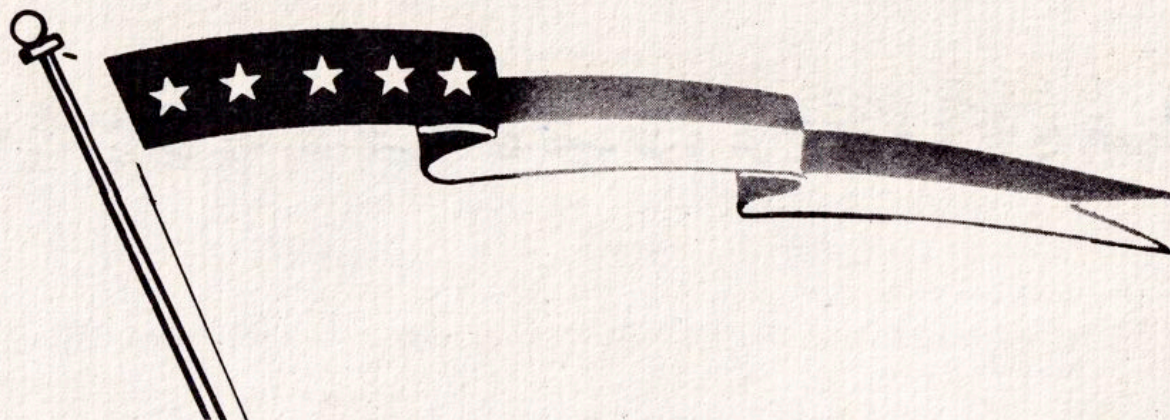
COMMISSIONING



Built by
MARE ISLAND NAVAL SHIPYARD
Vallejo, California

Keel Laid:	December 1965
Launched:	July 1968
Commissioned:	September 1972

Sponsored by
Mrs. JOHN McNAY TAYLOR

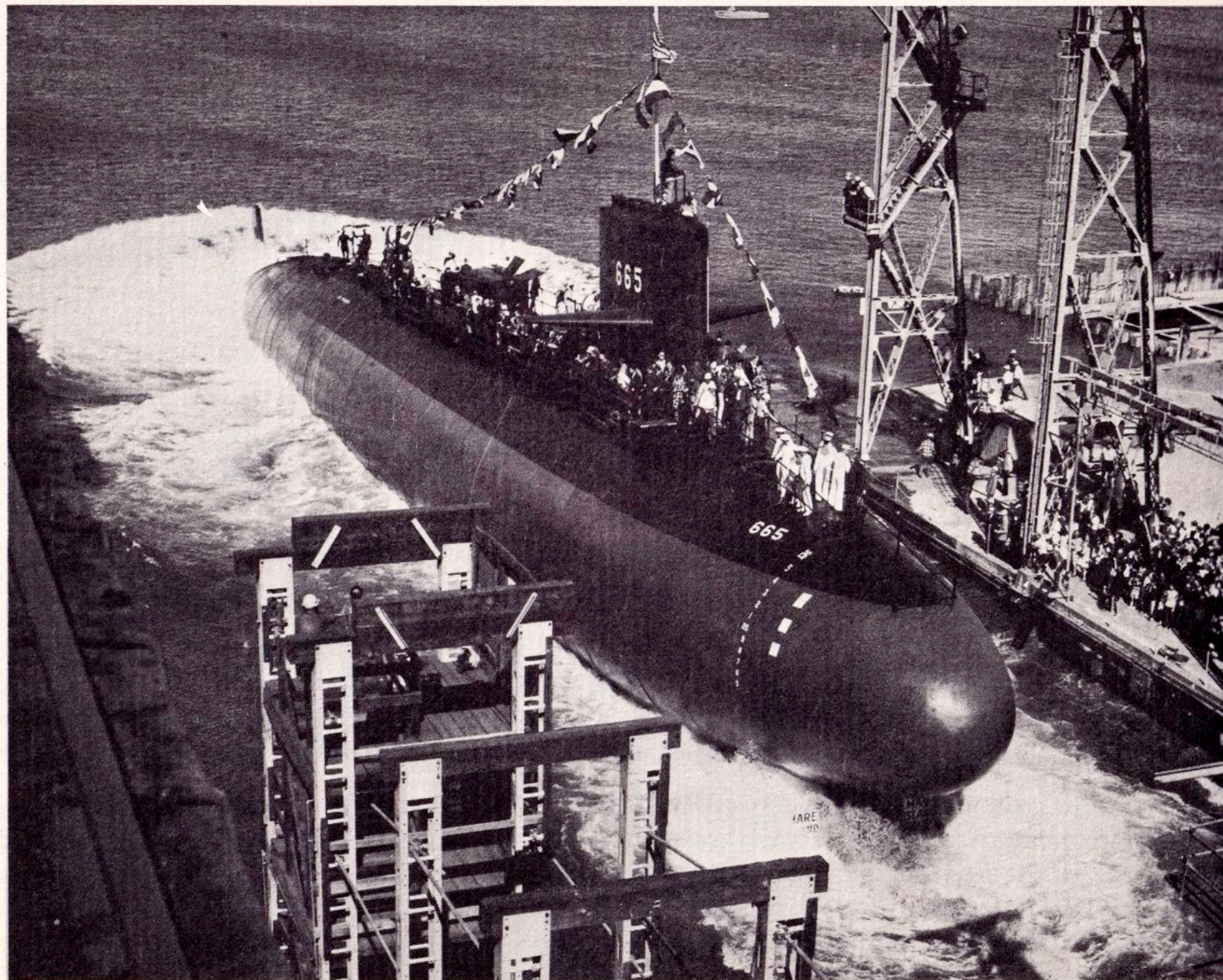


COMMISSIONING OF A NAVY SHIP

The commissioning ceremony marks the entry of a ship into the Operating Forces of the United States Navy. At the moment of breaking the commission pennant, USS GUITARRO (SSN 665) becomes an active member of the Fleet. The Commanding Officer, together with the ship's officers and men, has the duty of making and keeping her ready for any service required by our nation in peace or war.

The commission pennant is believed to date from the 17th century. During the First Anglo-Dutch War the Dutch Admiral, Maarten Tromp, hoisted a broom at his masthead after his victory at Dungeness to signify his sweep of the English from the English Channel. This gesture was answered by the English admiral William Blake who hoisted a horse whip, indicating his intention to chastise the Dutch. The English were ultimately victorious and ever since, the narrow, or coach whip, pennant (symbolizing the original horse whip) has been adopted by many nations as the distinctive mark of a ship of war.

LAUNCHING OF
USS GUITARRO
(SSN 665)

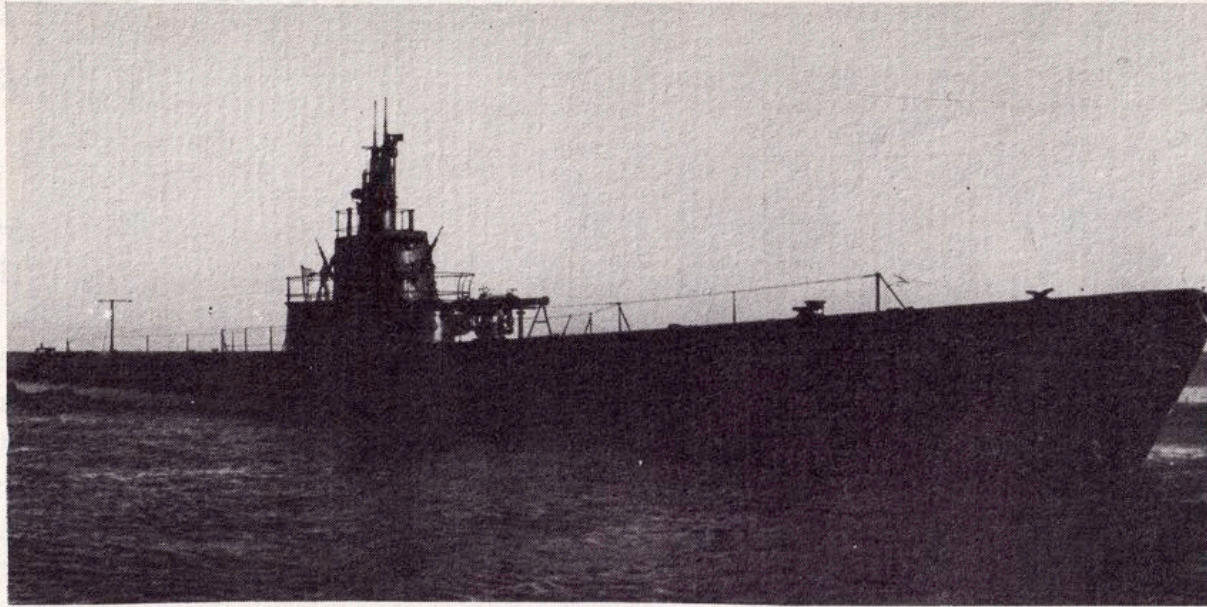




UNITED STATES SHIP GUITARRO (SSN 665)

GUITARRO (SSN 665) is a Sturgeon Class submarine, 292 feet long, with a beam of 31 feet and a displacement of 4800 tons submerged. Her mission is to seek out and destroy enemy ships—primarily other submarines. To accomplish this mission GUITARRO has highly advanced electronic detection and ranging equipment and a computerized weapons control system. Combined with long range torpedoes and the SUBROC missile, these systems permit detection and destruction of enemy ships and submarines at great distances.

As are all nuclear powered submarines, GUITARRO is capable of operating independently of the earth's atmosphere for long periods of time. This characteristic is a result of power generation by a pressurized water reactor and associated steam plant which requires no oxygen supply or atmospheric exhaust. The power generated by the reactor provides propulsion and drives auxiliary turbine generators which provide the ship with all necessary light and electrical power. To support human life in this enclosed environment, the ship is completely air-conditioned and the atmosphere is highly controlled to prevent buildup of any toxic substances hazardous to life or equipment.



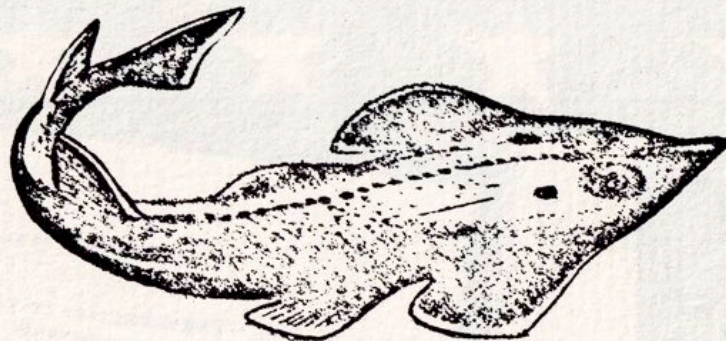
USS GUITARRO (SS 363)

The first USS GUITARRO (SS 363) distinguished herself on four war patrols in Asian waters from 7 May 1944 to 15 March 1945. Her crew received the Navy Unit Commendation for their efforts in downing eight enemy vessels which displaced 23, 132 tons.

GUITARRO (SS 363) was built at Manitowoc Shipbuilding Company, Wisconsin, and was commissioned on 26 January 1944 under the command of Lt. Cmdr. Enrique D'Hamel Haskins.

The first GUITARRO was instrumental in the success of the American fleet in the Battle of Leyte Gulf (23-24 October 1944) when she detected, tracked, and reported intelligence on a large task force of enemy vessels on 23 October. GUITARRO had its biggest single day on 31 October 1944 when it sank both the cargo ship KOMEI MARU, 2857 tons, and the passenger-cargoman PACIFIC MARU, 5872 tons, off southwest Luzon.

In 1954 the USS GUITARRO (SS 363) was transferred to the Turkish Navy and redesignated PREVEZE (D-7).

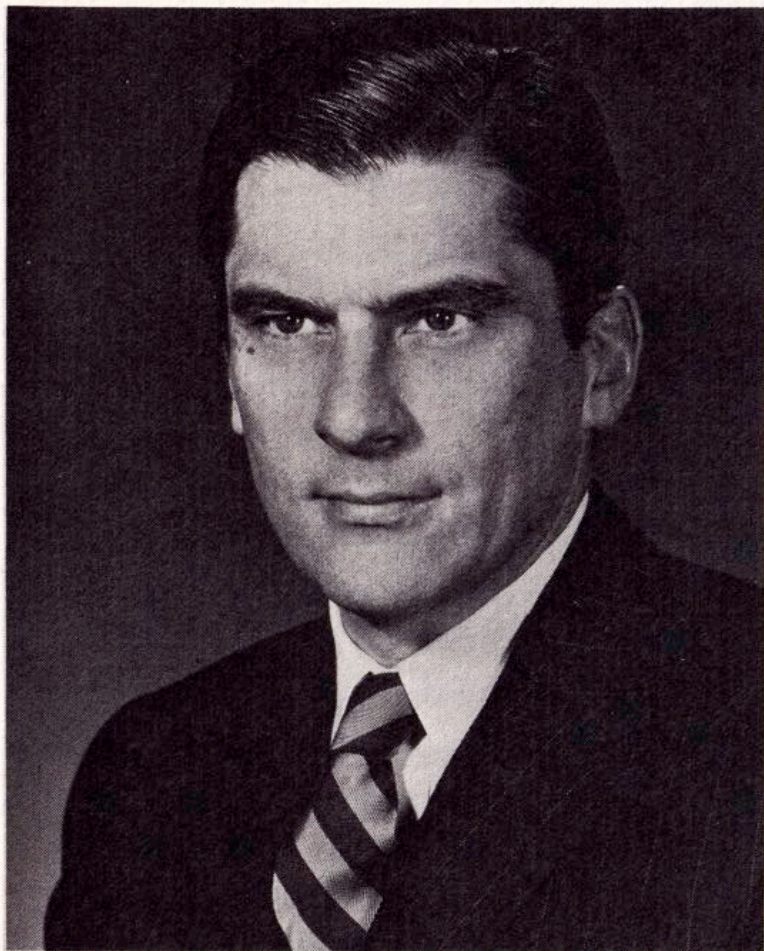


GUITARFISH

The Guitarfish, also known as the Shovelnose, is a member of the ray family with the scientific designations of **Rhinobatos lentiginosus** for the Atlantic variety and **Rhinobatos productus** for the Pacific variety. It inhabits the warm coastal waters off California and Baja California, and from North Carolina to Yucatan.

The Guitarfish has the flat, broad head of a ray with the pectoral fins fused to the head and the gill openings on the underside of the body. It differs from most rays in that it swims by lashing its tail from side to side rather than by flapping its pectoral fins. The Shovelnose can be identified by the white dots on its gray-to-brown back. It reaches a maximum length of six feet.

The Guitarfish feeds mostly on crustaceans and prefers the sandy or muddy bottoms of warm, shallow waters. The flesh is sometimes eaten, although it is not considered a game fish. The skin is used for the manufacture of leather goods.



THE SECRETARY OF THE NAVY
THE HONORABLE
JOHN W. WARNER



THE SECRETARY OF THE NAVY
WASHINGTON

8 September 1972

Commander William G. Lange, USN
PCO, GUITARRO (SSN-665)
Mare Island Naval Shipyard
Vallejo, California 94592

Dear Captain,

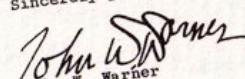
Congratulations on your new command, and best wishes to you and to your crew on the commissioning of GUITARRO (SSN-665).

Your new ship embodies great strides in ship and weapon system design. She will require what Fleet Admiral Nimitz described as "men of intelligence, courage, and the highest degree of skill" to "transform inanimate weapons into an alive and potent fighting force." Your leadership, combined with the effort of every submariner who sails with GUITARRO, will enable her to realize her full potential as a vital arm of our nation's defense.

In designing new ships such as GUITARRO we have endeavored to continue to improve living conditions for the fine men who sail them. I know that you share this interest. Although improvements have been made over earlier designs, there is always a need for new ideas in this important area. I hope that you and your crew will continue to develop innovations in habitability improvements and forward your recommendations for any such submissions. I would like to receive an advance copy of any such submissions. Our men constitute our most vital asset. As we seek their finest performance, their individual and collective welfare deserves our most active interest.

I know that you will meet the challenges that lie ahead in true Navy fashion. May success and good fortune be yours.

Sincerely yours,


John W. Warner



CHIEF OF NAVAL OPERATIONS

Dear Captain,

8 September 1972

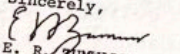
My best wishes go to you and to your ship's company on the commissioning of GUITARRO (SSN-665).

You inherit a worthy tradition, begun by an earlier GUITARRO (SS-363). In five Pacific war patrols during World War II, this fighting ship compiled an enviable record of achievement which won her a Navy Unit Commendation. Ranging from Indonesia and the Philippines to Formosa, her aggressive submariners demonstrated their ability time and again in attacks on enemy warships and supply ships. In the post-war years, she helped to maintain the high degree of readiness required by our turbulent times. I am sure that the same qualities of mind and heart which marked the men of the first GUITARRO will serve to inspire all of you as you embark upon your future duties.

Your selection as Commanding Officer of GUITARRO is a tribute to your past performance and attests to your ability to meet the challenge of Command, the most cherished experience of a Naval career. You know the truth because of the people in her; without them, she is an inert mass of steel." Our need for highly motivated, experienced personnel has never been greater. I urge you to be keenly aware of the welfare of your men. There is no substitute for a crew who is well informed and whose talents are recognized. I encourage you to delegate responsibility down to the lowest level and in so doing, develop a real sense of being part of, what I know will be, one of our Navy's finest fighting units.

On behalf of the Navy, I welcome GUITARRO to the fleet.

Sincerely,


E. R. ZUMWALT, JR.
Admiral, U.S. Navy

Commander William G. Lange, USN
PCO, GUITARRO (SSN-665)
Mare Island Naval Shipyard
Vallejo, California 94592



THE CHIEF OF NAVAL OPERATIONS
ADMIRAL
ELMO R. ZUMWALT, JR.



REAR ADMIRAL PAUL L. LACY, JR., UNITED STATES NAVY

Paul Lindsay Lacy, Jr., a native of Dallas, Texas, graduated from the United States Naval Academy in June of 1942. After graduation he served in the cruiser CLEVELAND and while on board saw action during the North African occupation and in operations at Rennell Island, Solomon Islands, New Georgia Islands and Treasury-Bougainville. He reported for submarine training in January 1944. As a submariner, he served in U.S.S. SEA CAT (SS 399) during four war patrols and was commended by Commander in Chief, Pacific Fleet for his performance during one of these patrols which resulted in the sinking of 10,000 tons of enemy shipping.

Following World War II, Rear Admiral Lacy attended the Post Graduate School, Annapolis, Maryland and attended UCLA receiving the degree of Master of Science in applied physics in June 1949. He then reported to U.S.S. BAYA (SS 318) as Executive Officer. He then served as Division Engineer for Submarine Division 51 prior to reporting to U.S.S. ENTEMEDOR (SS 340) where he served as Executive Officer and the Commanding Officer.

In March 1952, he was assigned to the Naval Torpedo Station, Keyport, Washington as Inspection Officer for Advanced Undersea Weapons. Following this assignment he commanded the submarines U.S.S. GUITARRO (SS 363) and U.S.S. PICKEREL (SS 524). He then reported to the Submarine Weapons Research and Development Section of the Bureau of Ordnance.

In July 1968 Rear Admiral Lacy was assigned to the Naval War College, Newport, Rhode Island (Naval Warfare Course) and upon completion of this course attended nuclear propulsion training in the Office of the Assistant Director, Naval Reactor, Division of Reactor Development, Atomic Energy Commission.

Assigned in July 1960 to the U.S.S. ETHAN ALLEN (SSBN 608) building at the Electric Boat Company, Groton, Connecticut, he assumed command of that fleet ballistic missile submarine upon her commissioning, August 8, 1961. In June 1964 he reported as Head of the Plans and Programs Branch, Bureau of Naval Weapons, Navy Department, and in June 1965 became Deputy Director of the Special Projects Office, Office of Naval Material, Navy Department.

In October 1966 he became Commander U.S. Naval Support Activity, Danang, Republic of Vietnam, one of the Navy's largest overseas shore activities. For exceptionally meritorious service in that capacity he was awarded the Distinguished Service Medal.

In January 1969 he became Director of the Later Design Submarine Project, Naval Material Command, Navy Department and in September 1970 was ordered for duty as Commander Submarine Force, U.S. Pacific Fleet.

**COMMANDER W. GORDON LANGE,
UNITED STATES NAVY**

COMMANDER LANGE was born in Englewood, New Jersey in 1936. Upon graduation from Tenaflly High School, Tenaflly, New Jersey, he was appointed to the Naval Academy, Class of 1957. CDR LANGE served aboard USS MASSEY (DD778) in Norfolk, Virginia for one year. Upon detachment he attended Submarine School and was subsequently assigned to USS CONGER (SS477). Two years on CONGER were followed by orders to Nuclear Power School at New London, Connecticut. After prototype training at Windsor Loch, Connecticut, CDR LANGE was ordered to USS SHARK (SSN591). Leaving SHARK in 1963, CDR LANGE reported to USS CASIMIR PULASKI (SSBN633), then under construction at Groton, Connecticut, as Engineer Officer. This tour was terminated five months after commissioning by orders to the USS JOHN MARSHALL (SSBN611) (GOLD) as Engineer Officer. In October 1966, he reported to the Staff, Submarine Development Group TWO as Material Officer. During this tour CDR LANGE was awarded the Navy Achievement Medal and the Meritorious Unit Commendation Ribbon. In October 1968 he reported to USS GREENLING (SSN614) and assumed duties as Executive Officer. While attached to GREENLING the ship was awarded two Meritorious Unit Commendations and two Navy Unit Commendations. CDR LANGE was personally awarded the Navy Commendation Medal and Meritorious Service Medal for his performance as Executive Officer. After detachment from GREENLING as Executive Officer in February 1971, CDR LANGE reported to Division of Naval Reactors AEC for 3 months temporary duty. Upon completion of this duty he reported to COMSUBPAC as PCO, USS GUITARRO (SSN 665), building at Mare Island Naval Shipyard.

CDR LANGE is married to the former Carole Carlson of Ossining, New York. They have four children: Laura, Karyn, Ian and Erik. The Langes currently make their home in Vallejo, California.



**COMMANDING OFFICER
USS GUITARRO (SSN 665)**

CG120W/AR/BOATS/OP/0

ARRIVAL OF OFFICIAL PARTY

INVOCATION

Lieutenant Commander Glenn W. Thomson (CHC) USN

**WELCOMING REMARKS AND INTRODUCTION OF THE
COMMANDANT, TWELFTH NAVAL DISTRICT**

Captain James H. Webber, USN

REMARKS AND READING OF THE COMMISSIONING DIRECTIVE

Rear Admiral Clyde J. Van Arsdall, USN

HOISTING OF THE COMMISSIONING PENNANT

NATIONAL ANTHEM

GRAM

ASSUMPTION OF COMMAND AND SETTING OF THE WATCH

Commander W. Gordon Lange, USN

HONORS

REMARKS BY THE COMMANDING OFFICER

Commander W. Gordon Lange, USN

INTRODUCTION OF THE PRINCIPAL SPEAKER

Rear Admiral Joseph W. Russel, USN

ADDRESS

Rear Admiral Paul L. Lacy, Jr., USN, Commander Submarine Force, U.S. Pacific Fleet

BENEDICTION

Lieutenant Commander Glenn W. Thomson (CHC) USN

USIC

L DISTRICT BAND

COLEMAN/PREBOAT/ISOPRO

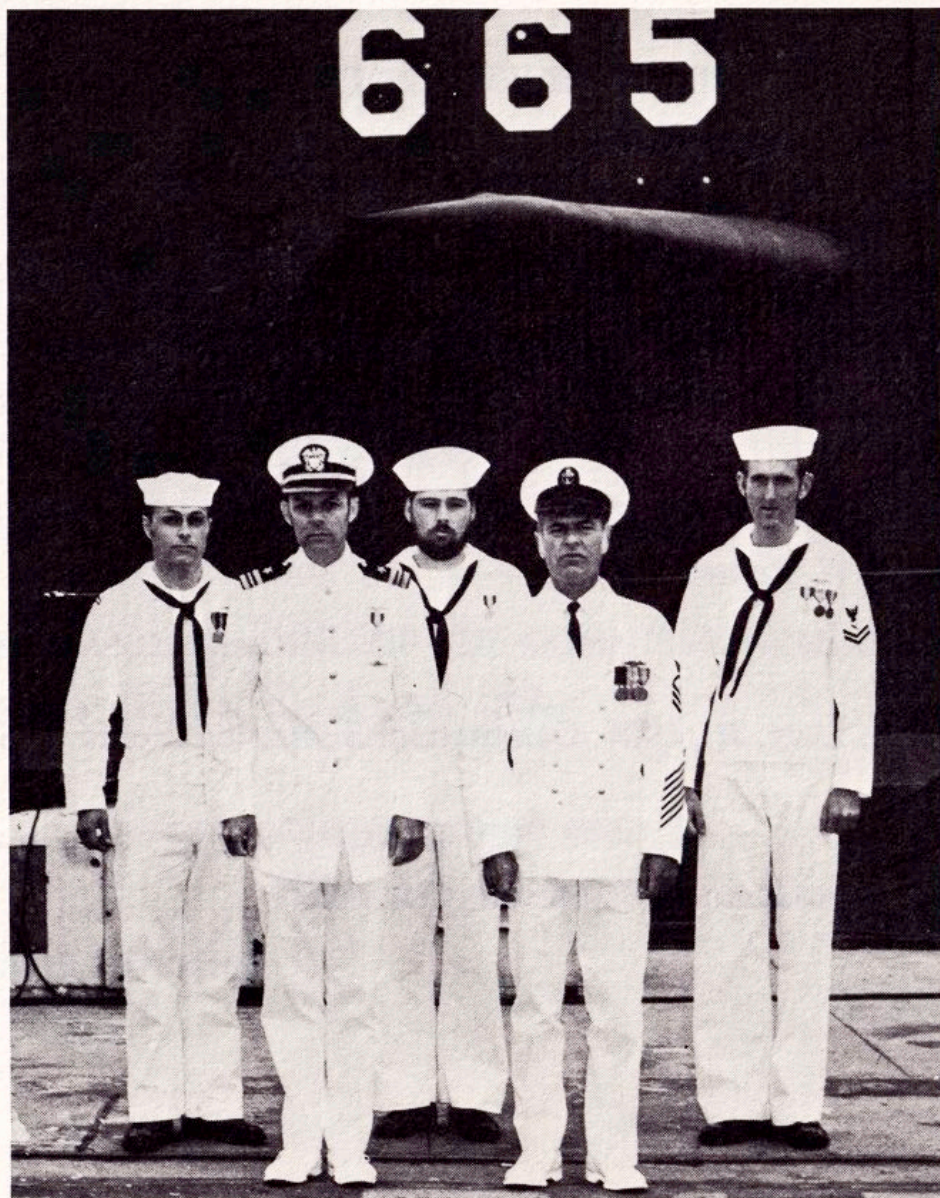
EXECUTIVE DEPARTMENT



LCDR W. L. POWELL
Executive Officer



HMI (SS) J. L. MASSICOTTE
Hospital Corpsman



QMC (SS) W. L. ANDREWS
Chief Of The Boat



YN2 (SS) R. E. WHITE
Leading Yeoman

COLDWARBOATS.ORG

NAVIGATION/OPERATIONS DEPARTMENT



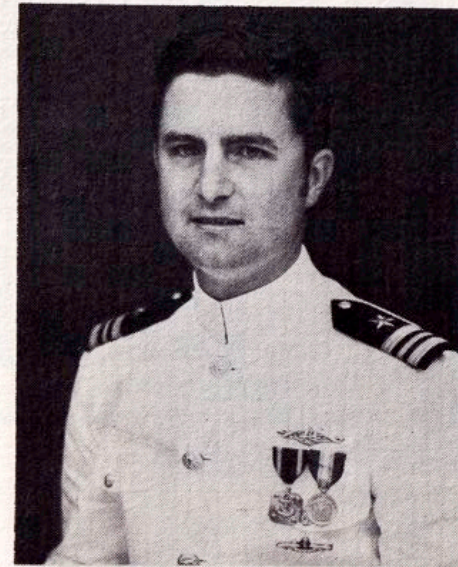
LT W. E. COLEMAN
Communicator



RMCS (SS) W. H. PAPPA
Leading Radioman



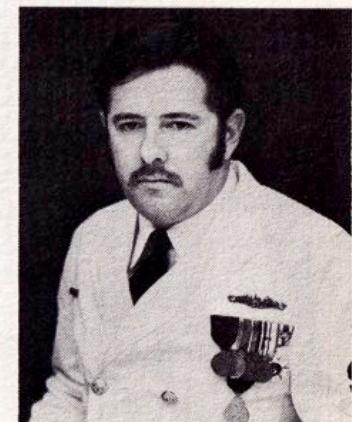
ETC (SS) A. E. HOVEY JR.
Leading Electronics Technician



LCDR W. W. KESLER
Navigator



QMC (SS) W. L. ANDREWS
Assistant Navigator
Chief Of The Boat



QMC (SS) D. L. SMITH
Leading Quartermaster

ENGINEERING



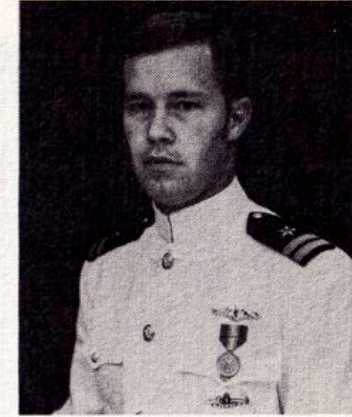
LCDR J. C. FORD
Engineer Officer



LT D. M. LIPSCOMB
Main Propulsion Assistant



LT G. J. ROLETTER SR.
Damage Control Assistant



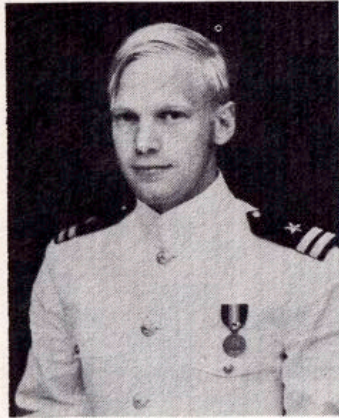
LT W. M. HILL
Electrical Officer



ICI (SS) D. R. AMMERMAN
IC Division L. P. O.



DEPARTMENT



LT W. E. CUMMINS JR.
Reactor Control Officer



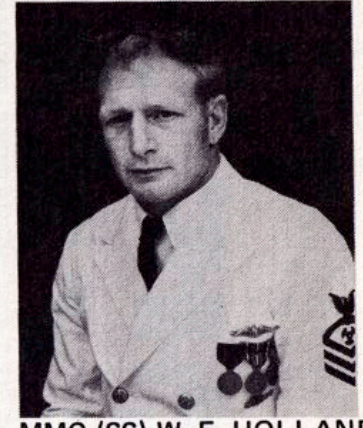
MMCM (SS) E. M. McROBERTS
M Division L. P. O.



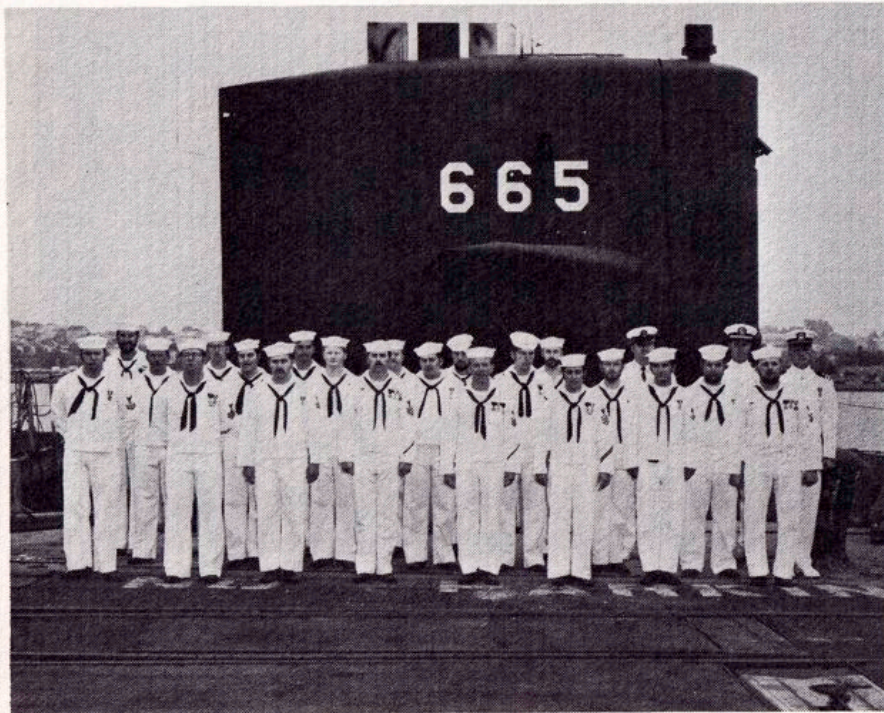
ETCM (SS) D. E. SWEENEY
RC Division L. P. O.



EM1 (SS) J. vanGELDER
E Division L.P.O.



MMC (SS) W. E. HOLLAND
A Division L. P. O.



MM1 (SS) R. W. LINDSEY
Leading Engineering
Laboratory Technician

WEAPONS DEPARTMENT



LT R. D. BOWENKAMP
Weapons Officer



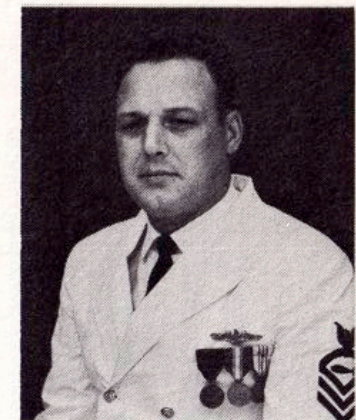
FTGC (SS) E. B. CURTIS
Leading Fire Controlman



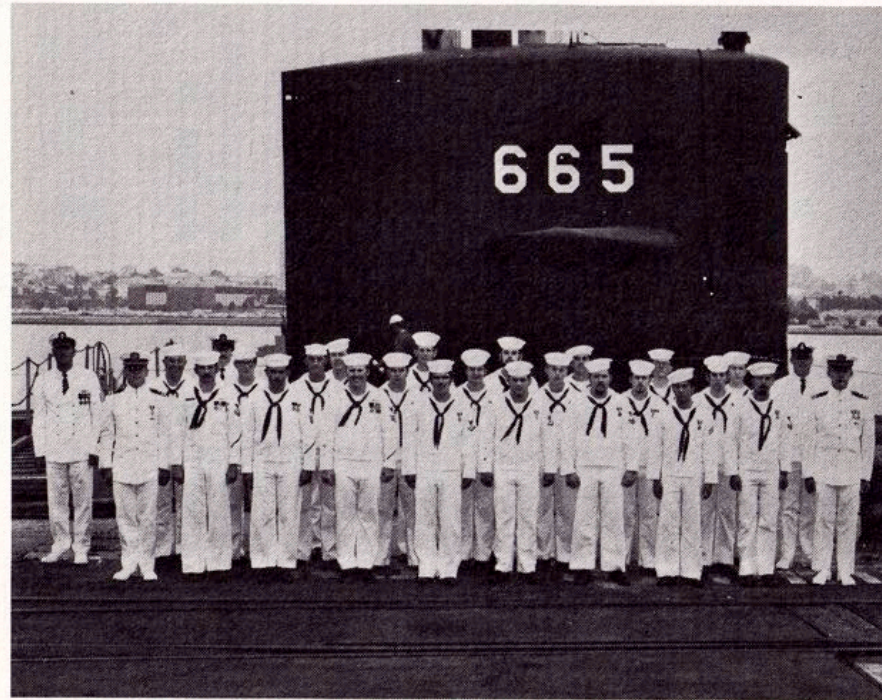
LT W. M. ELLIOTT
Sonar/Fire Control Officer



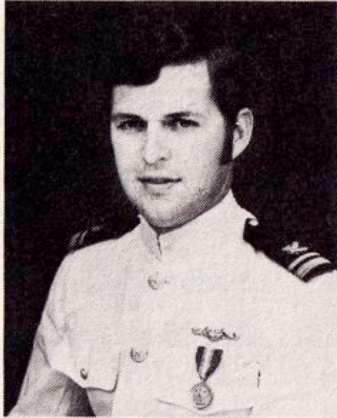
STC (SS) R. C. BUTTERS
Leading Sonarman



TMC (SS) D. L. FIELDS
Leading Torpedoman



SUPPLY DEPARTMENT



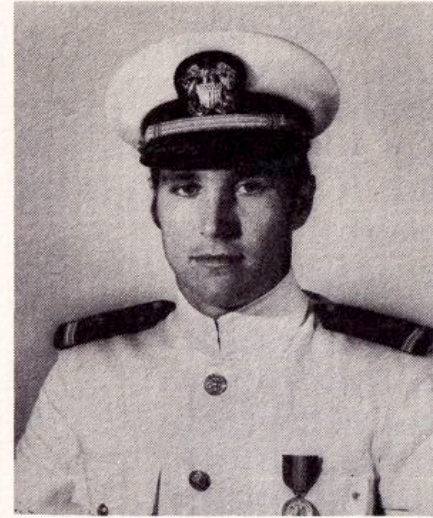
LTJG E. C. EGGEN
Pre-Commissioning
Supply Officer



SDC (SS) R. G. CASTRO
Leading Steward



CSI (SS) R. W. BAKER
Leading Commissaryman



ENS T. O. DUFFEY
Supply Officer



SK1 (SS) E. C. RITZ
Leading Storekeeper

CREW ROSTER

EXECUTIVE DEPARTMENT

QMC (SS) W. L. Andrews

HM1 (SS) J. L. Massicotte
YN3 K. J. Sulli

YN2 (SS) R. E. White

NAVIGATION AND OPERATIONS DEPARTMENT

Navigation Division

QMC (SS) W. L. Andrews
QMC (SS) D. L. Smith
QM2 (SS) G. D. Marlowe
QM2 (SS) B. E. Ealson
QM3 (SS) J. R. Colombini
QM3 D. B. Legardeur, Jr.

ET Division

ETC (SS) A. E. Hovey, Jr.
ET1 (SS) K. A. McKee
ET1 (SS) J. B. Lindemann
ETR2 (SS) P. D. James
ETN2 G. A. Riddle III
ETR 3 B. L. Jacobson

Radio Division

RMCS (SS) W. H. Pappa
RM1 (SS) P. E. VanCamp
RM1 (SS) P. R. Pritchett
RMSN M. B. Snyder

TM Division

TMC (SS) D. L. Fields
TM1 (SS) D. F. Gates
TM1 (SS) L. M. Davis
TM2 (SS) R. A. Pefley
TM3 T. A. Johnson
TM3 J. A. Cooke
TM3 R. E. Kelly

WEAPONS DEPARTMENT

FT Division

FTG (SS) E. B. Curtis
FTG1 (SS) W. T. Watkins
FTG1 (SS) R. V. Devincenzo
FTG2 (SS) T. L. Lewis
FTG3 T. L. Jenkins

Sonar Division

STC (SS) R. C. Butters
ST1 (SS) D. T. Harrington
STS2 (SS) P. T. Lindsay
STS2 (SS) R. G. Kurowski
STS2 (SS) R. F. Norwood
STS2 P. J. Tufts
STS2 J. W. Kline
STS2 L. A. Nielsen

MMFN J. C. Ott
SN R. K. Nowatchik
SN S. A. Maddy

Deck Division

MMFN P. E. Laplante
SN P. R. Hansen
SN R. A. Tanouye

MMFN L. H. Garcia
TMSN D. E. Allen

ENGINEERING DEPARTMENT

RC Division

ETCM D. E. Sweeney
ET1 (SS) R. L. Mercer
ET1 (SS) J. W. King
ET1 (SS) R. D. Barker
ET1 W. H. Haines
ETN2 (SS) G. M. Long
ETN2 T. I. Miller
ETN2 R. M. Prow
ETN3 (SS) M. R. Longworth

A Division

MMC (SS) W. E. Holland
MM1 (SS) J. D. Devera
MM1 (SS) W. A. Hawkins
MM2 (SS) K. D. Reynard, Jr.
MM2 (SS) J. O. Shugart
MM2 (SS) R. A. Rose
MM2 W. H. Moore III
MM3 M. B. Vantine
MMFN K. L. Hutcheson

SDC (SS) R. G. Castro
CS2 J. M. Perry
TN R. W. Hart
SA M. E. Crone

M Division

MMCM (SS) E. M. McRoberts
MM1 (SS) G. R. Cragen
MM1 (SS) C. A. Cunningham
MM1 (SS) R. W. Lindsey
MM1 (SS) L. P. Schmidt
MM1 (SS) J. F. Donnelly
MM1 (SS) R. L. Legg
MM1 (SS) M. E. Townsend
MM2 C. R. Dugan
MM2 (SS) F. C. Buckingham
MM2 R. F. Smith
MM2 B. F. Sears III
MM2 W. S. Bradford
MM2 W. M. Kennedy
MM2 W. P. Atkins
MM3 J. W. King

SUPPLY DEPARTMENT

SK1 (SS) E. C. Ritz
SK2 (SS) A. A. Bayungan
TN P. L. Gove, Jr.
SA D. L. Lemberg

E Division

EMC (SS) R. W. Peterson
EM1 (SS) J. vanGelder
EM1 (SS) F. W. Johnson
EM1 (SS) D. E. Luellig
EM1 (SS) G. L. Martin
EM2 J. D. Payne
IC2 J. A. Hancock
EM2 R. R. Chase IV
IC2 J. W. Cotton
EM2 D. R. Fancy
EM2 B. F. Schafer
EM2 J. C. Wheeler
EM2 D. H. Kelly

IC Division

IC1 (SS) D. R. Ammerman
IC1 (SS) R. C. Ingle
IC2 (SS) T. L. Watson
IC3 (SS) S. R. Richter

CS1 (SS) R. W. Baker
CS3 (SS) S. A. Smith
SA J. H. Payne
SA D. G. Kowalchik

IN RECOGNITION

The members of GUITARRO'S Pre-Commissioning Crew listed below who labored long and hard during the building of GUITARRO are not present at Commissioning but are listed herein IN RECOGNITION of the significant contributions they made toward her final excellence. They are considered SHIPMATES.

LTJG E. C. EGGEN
ET1 (SS) J. E. LONG III
MM1 (SS) W. J. CLARK
MM2 D. R. VALLEY
MM2 (SS) W. E. CARVER, JR.

EMC (SS) R. H. TAYLOR
YN1 (SS) V. R. ROEMMICH
IC1 (SS) R. A. OLIVER, JR.
MM2 F. M. MANNING
TM3 (SS) R. G. SWENSON
SN A. G. SLATER

ST1 (SS) W. M. SHARE
CS1 (SS) C. E. RHODES
MM1 (SS) E. J. O'BRIEN
EM2 (SS) C. C. CARPENTER, JR.
CSSN C. R. MCGOWAN



