

# *Commissioning*

## **United States Ship BILLFISH (SSN 676)**



U.S. NAVAL SUBMARINE BASE  
GROTON, CONNECTICUT

MARCH 12, 1971





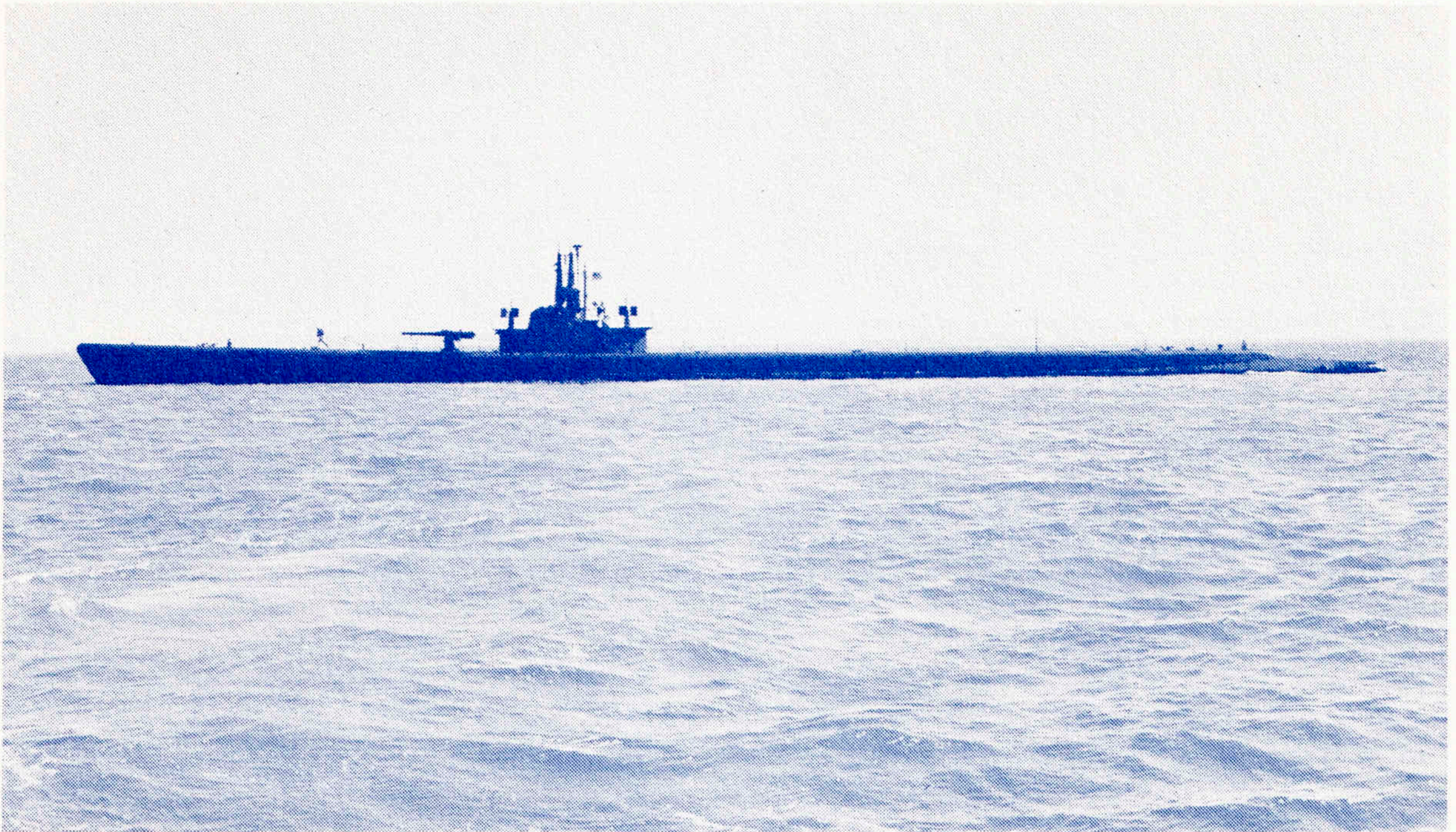
## *Commissioning of a Navy Ship*

The commissioning ceremony marks the acceptance of a ship as a unit of the Operating Forces of the United States Navy. At the moment of breaking the commissioning pennant, USS BILLFISH (SSN676) becomes the responsibility of the Commanding Officer who, together with the ship's officers and men, has the duty of making and keeping her ready for any service required by our nation in peace or war.

\* \* \*

The commissioning pennant is believed to date from the 17th century, when the Dutch were at war with the English. The Dutch Admiral TROMP hoisted a broom at his masthead to indicate his intention to sweep the English from the sea. This gesture was answered by the English admiral who hoisted a horse whip, indicating his intention to chastise the Dutch. The English were victorious and ever since, the narrow, or coach whip, pennant (symbolizing the original horse whip) has been adopted by all nations as the distinctive mark of a ship of war.





## *Heritage*

### USS BILLFISH (SS 286)

Built by the Portsmouth Naval Shipyard, Portsmouth, New Hampshire, USS BILLFISH (SS 286) was launched on 12 November 1942, under the sponsorship of Mrs. Lewis S. Parks. The BILLFISH was commissioned on 20 April 1943 with Lieutenant Commander Frederick C. Lucas as her first Commanding Officer.

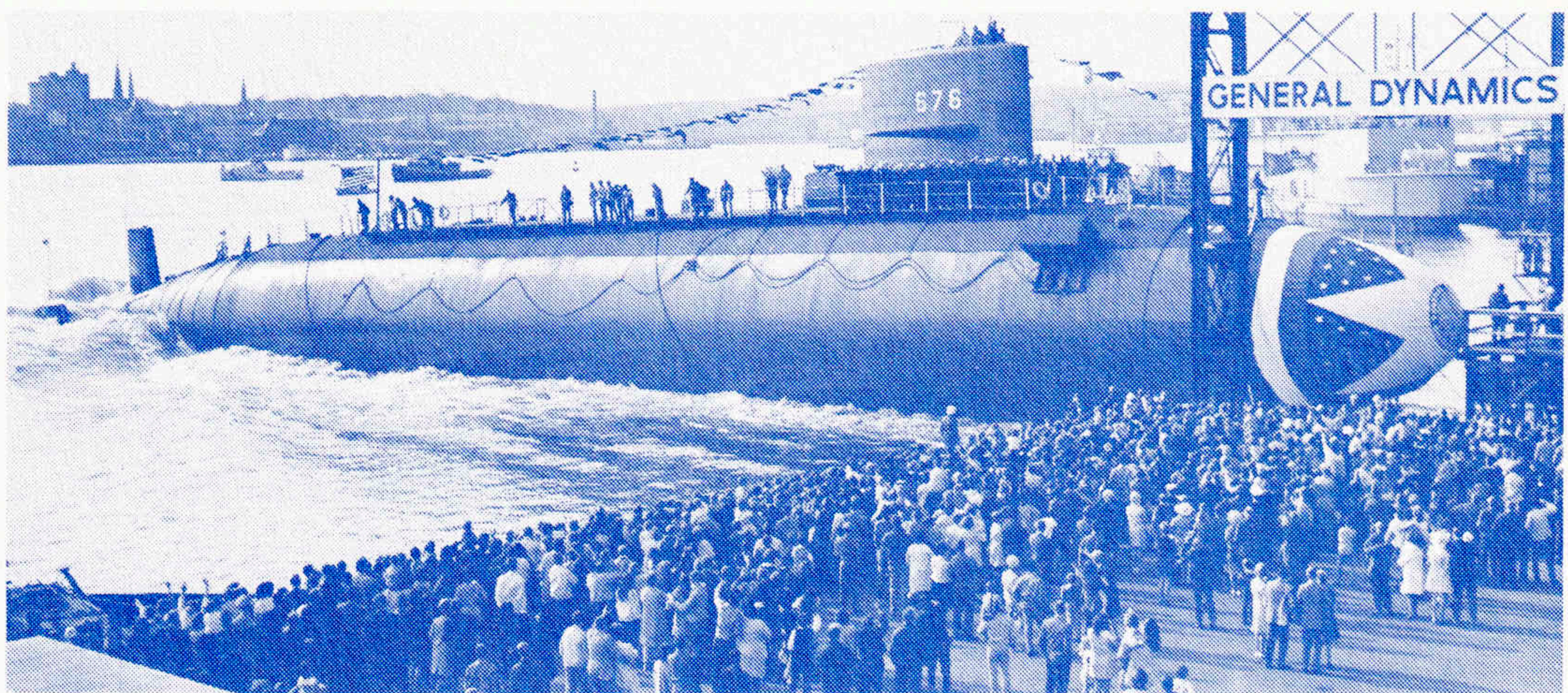
BILLFISH commenced her first war patrol in August 1943 and completed eight war patrols. She is officially credited with sinking or damaging 22,450 tons of enemy shipping. She earned seven Battle Stars on the Asiatic-Pacific Area Service Ribbon for war patrols she conducted during the period 12 August 1943 to 15 August 1945.

BILLFISH was decommissioned at Portsmouth Navy Yard on 1 November 1946.

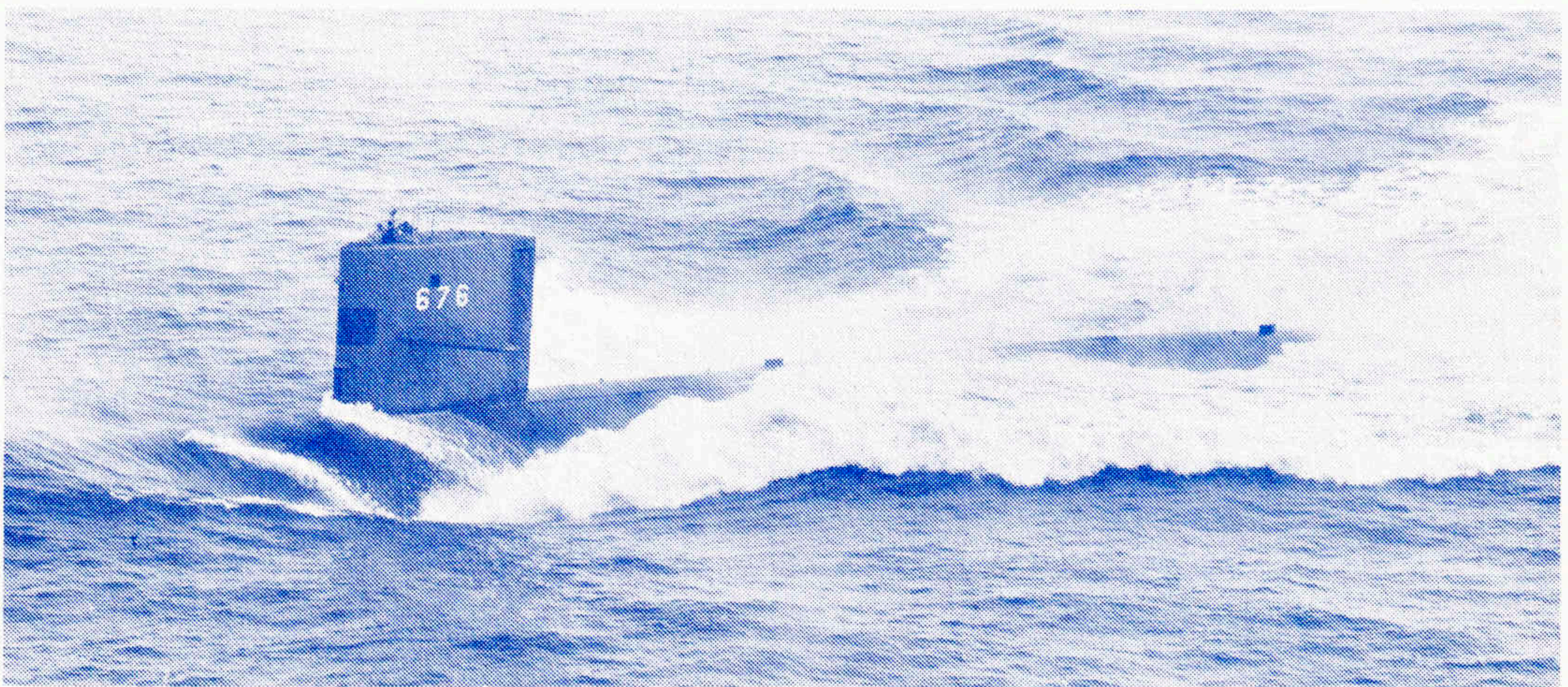




KEEL LAYING

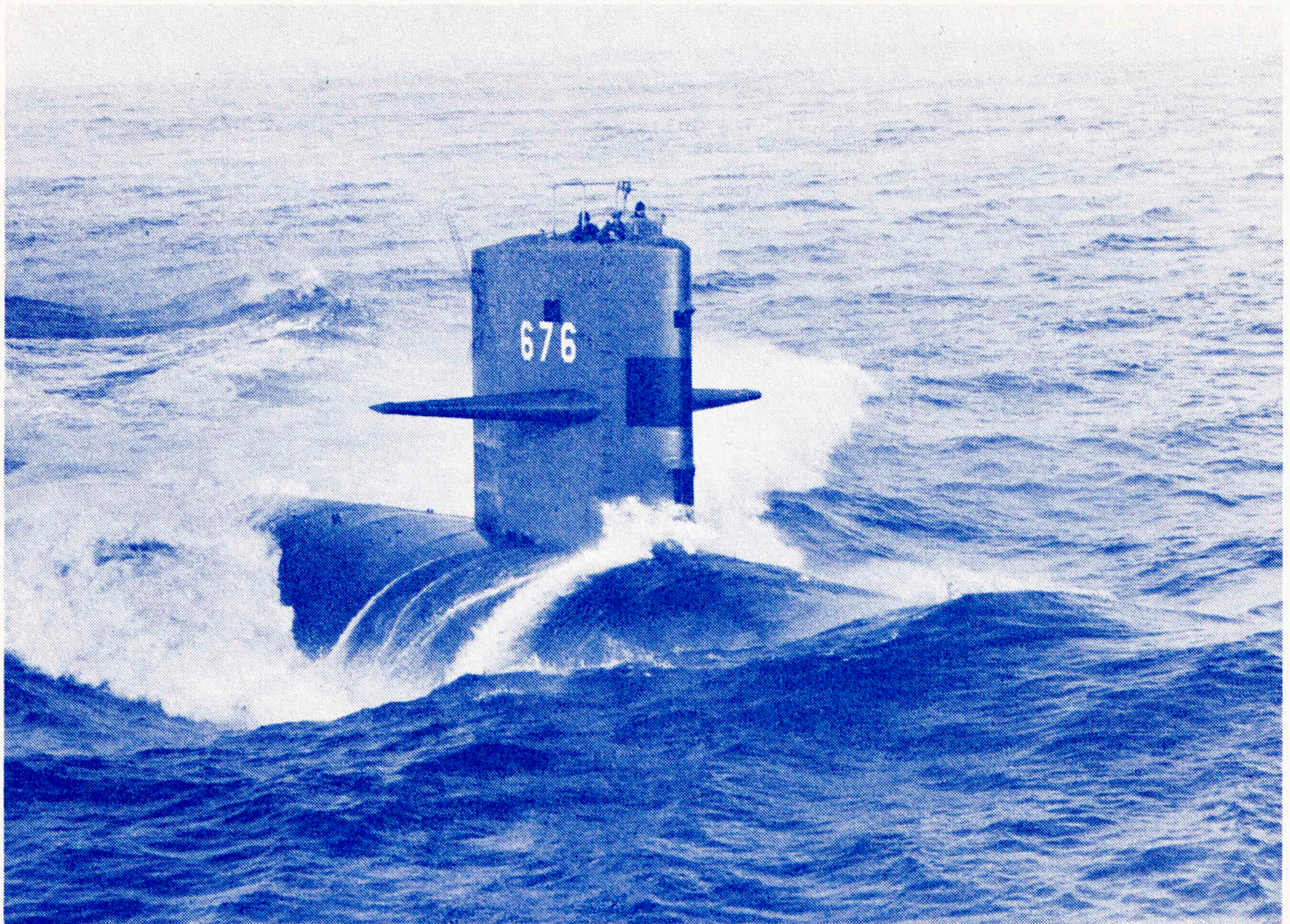


LAUNCHING



AT SEA





### PROFILE OF THE BILLFISH

USS BILLFISH (SSN676), built by the Electric Boat Division of General Dynamics, is a nuclear-powered attack submarine of the STURGEON class. She is 292 feet long with a beam of 32 feet and a submerged displacement of 4,600 tons. Her keel was laid on 20 Sept. 1968 by Mrs. Philip A. Beshany, wife of Rear Admiral Beshany, a former Commanding Officer of the first USS BILLFISH (SS 286). She was launched on 1 May 1970 under the sponsorship of Mrs. Earle G. Wheeler. Today, BILLFISH will become the 91st nuclear submarine to enter the fleet and the 50th attack type. Her assignment upon commissioning will be to Submarine Development Group Two in Groton, Connecticut.

BILLFISH is a streamlined, highly advanced and maneuverable anti-submarine warfare platform.

She is powered by a pressurized water nuclear reactor propulsion plant which provides reliability, high power, and the ability to operate independently of the outside atmosphere for extended periods.

She will carry the most advanced weapons and sonar systems available to the Submarine Force, including the SUBROC missile system which adds a potent attack capability.

These characteristics make BILLFISH one of the Navy's most effective anti-submarine warfare weapons in existence today.



## *The Sponsor*



**MRS. EARLE G. WHEELER**

Frances Howell Wheeler, wife of the former Chairman of the Joint Chiefs of Staff, is a native of Brooklyn, N.Y., and Old Greenwich, Connecticut. She married Earle G. Wheeler upon his graduation from West Point and has been “soldiering” ever since. Mrs. Wheeler enjoys being a housewife most of all, having now devoted two-thirds of her life to that occupation.

The Wheelers presently reside in Martinsburg, West Virginia, where they moved upon General Wheeler’s retirement in July, 1970. They have one son and two grandsons.



## *The Principal Speaker*



**THOMAS J. MESKILL**  
Governor of Connecticut

Thomas J. Meskill was elected Governor of Connecticut in November, 1970, after serving since 1966 with the 90th and 91st Congresses as Representative from Connecticut's Sixth District. He is a graduate of Hartford's Trinity College and the University of Connecticut Law School. A former partner in the law firm of Meskill, Dorsey, Sledzik and Walsh, he also served as Mayor of New Britain, his home town, from 1962 to 1964. He was a member of the 1965 Constitutional Convention in Hartford. Governor Meskill is married to the former Mary T. Grady. The couple has five children.



# *Commissioning* **United States Ship**

## *INVOCATION*

Reverend Robert W. Bermudes

## *WELCOMING REMARKS AND INTRODUCTION OF BUILDER'S REPRESENTATIVE*

Captain Albert E. Rose, Jr, USN  
Supervisor of Shipbuilding, Conversion and Repair  
Groton, Connecticut

## *REMARKS*

Mr. Joseph D. Pierce  
General Manager  
Electric Boat Division of General Dynamics

## *INTRODUCTION OF COMMANDANT, THIRD NAVAL DISTRICT*

Captain Albert E. Rose, Jr., USN

## *REMARKS AND READING OF THE COMMISSIONING DIRECTIVE*

Rear Admiral F.D. Foley, USN  
Commandant, Third Naval District



# *ing Program*

**BILLFISH (SSN 676)**



## *COMMISSIONING AND ASSUMPTION OF COMMAND*

Commander Richard M. Hughes, USN  
Commanding Officer

## *RENDERING OF HONORS*

### *REMARKS BY THE COMMANDING OFFICER*

Commander Richard M. Hughes, USN

### *INTRODUCTION OF THE PRINCIPAL SPEAKER*

Rear Admiral F. D. Foley, USN

## *ADDRESS*

The Hon. Thomas J. Meskill  
Governor of Connecticut

## *BENEDICTION*

Reverend Robert W. Bermudes

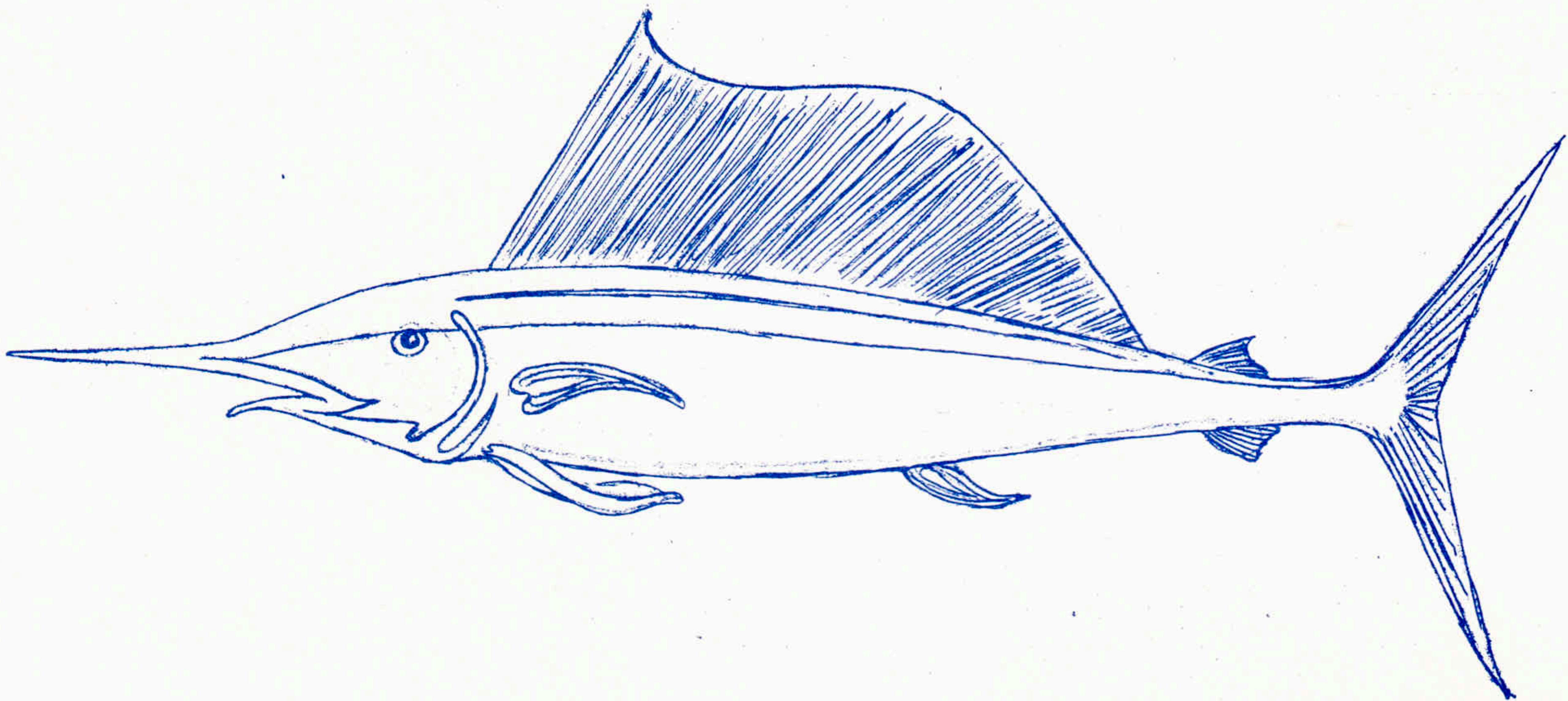
## *HONORS AND DEPARTURE OF THE OFFICIAL PARTY*

*MUSIC*

*L SUBMARINE BASE BAND*



## The Billfish



Billfish is a name assigned to two distinct families of fish: the rounded bill (Istiophoridae) and the flat bill (Xiphiidae). Billfish not only have long, protruding, and sharp bills, but also grow to immense sizes. They tailwalk in frantic efforts to throw the hook and frequently spring from the water in great bounding leaps. They stun their prey, which usually consist of small, schooling fish, with swift, back-and-forth slashes of their tail. Putting their bill to use, they have been known to ram boats and pierce up to three-inch planking. Marlin, sailfish, and swordfish are members of the Billfish families.

Another Billfish is a member of the Needle-Fish Family. It is scientifically known as “*strongylura marinus*” and is commonly found off the U.S. Atlantic & Gulf Coasts from Maine to Texas. Its name is derived from the long protruding bill. The Billfish is a voracious feeder, a good game and food fish, and grows to a length of four feet at maturity.



## *The Commanding Officer*



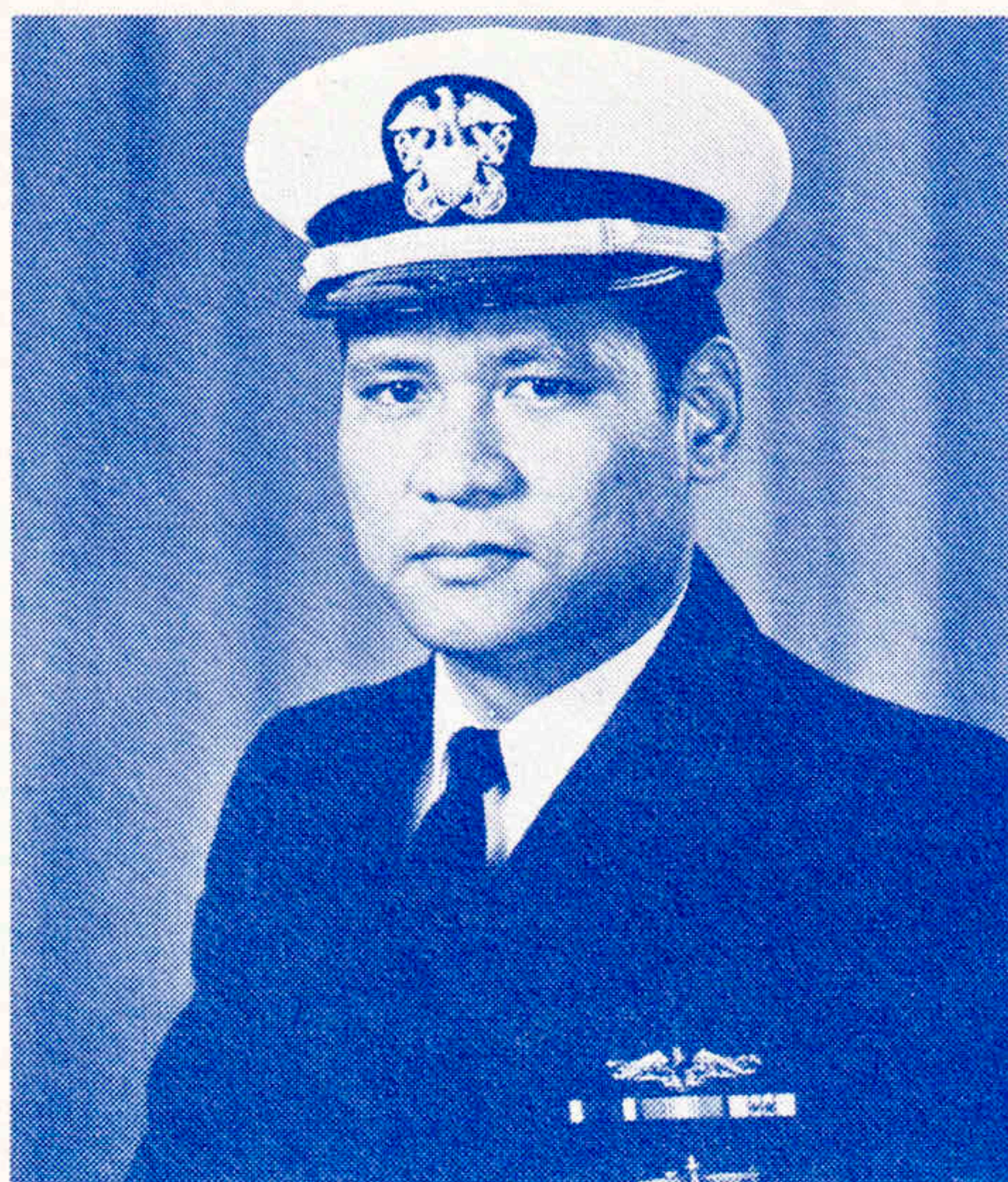
### COMMANDER RICHARD M. HUGHES

Commander Richard M. Hughes graduated from the U.S. Naval Academy in 1955. Following graduation he served 2 years on USS ERBEN (DD 631). In June 1957 Commander Hughes attended Submarine School in Groton, Connecticut, and upon graduation was assigned to USS RAZORBACK (SS 394) in San Diego, California. Commander Hughes was selected for Nuclear Power Training in 1959, and has served on the Polaris Submarines THEODORE ROOSEVELT (SSBN600) and JOHN ADAMS (SSBN620). In the summer of 1965 Commander Hughes reported to the Staff of Submarine School and was Director of the Executive Division until 1967 when he was ordered as Executive Officer of USS TINOSA (SSN606). Prior to reporting to USS BILLFISH (SSN676) Commander Hughes completed a course of instruction with the Atomic Energy Commission in Washington, D.C.

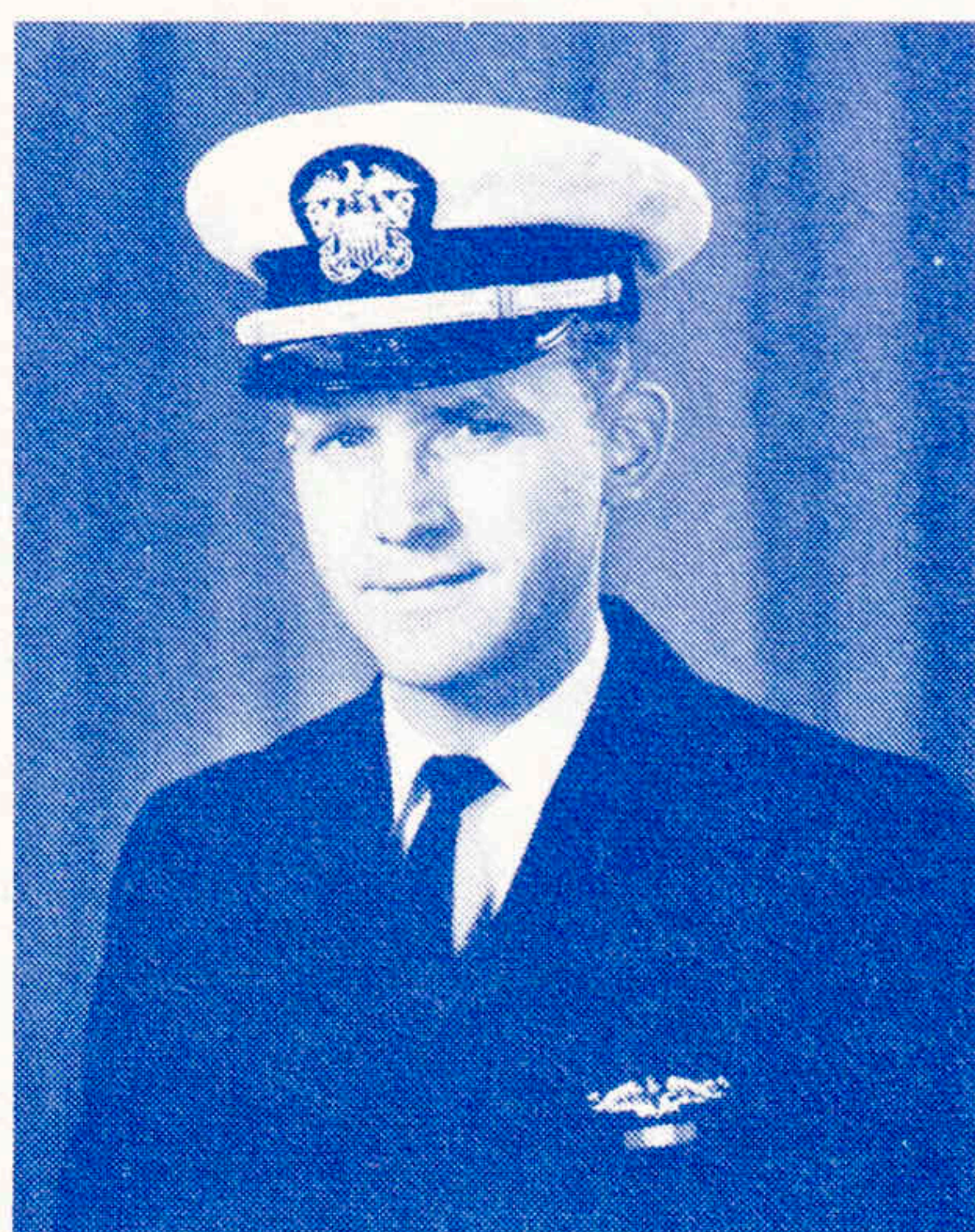
Commander Hughes is married to the former Mary Joyce Douglas of 101 Cooper Street, New York, N.Y. Commander and Mrs. Hughes and their four children currently reside in Groton, Connecticut.

Commander Hughes is a native of Quaker City, Ohio.

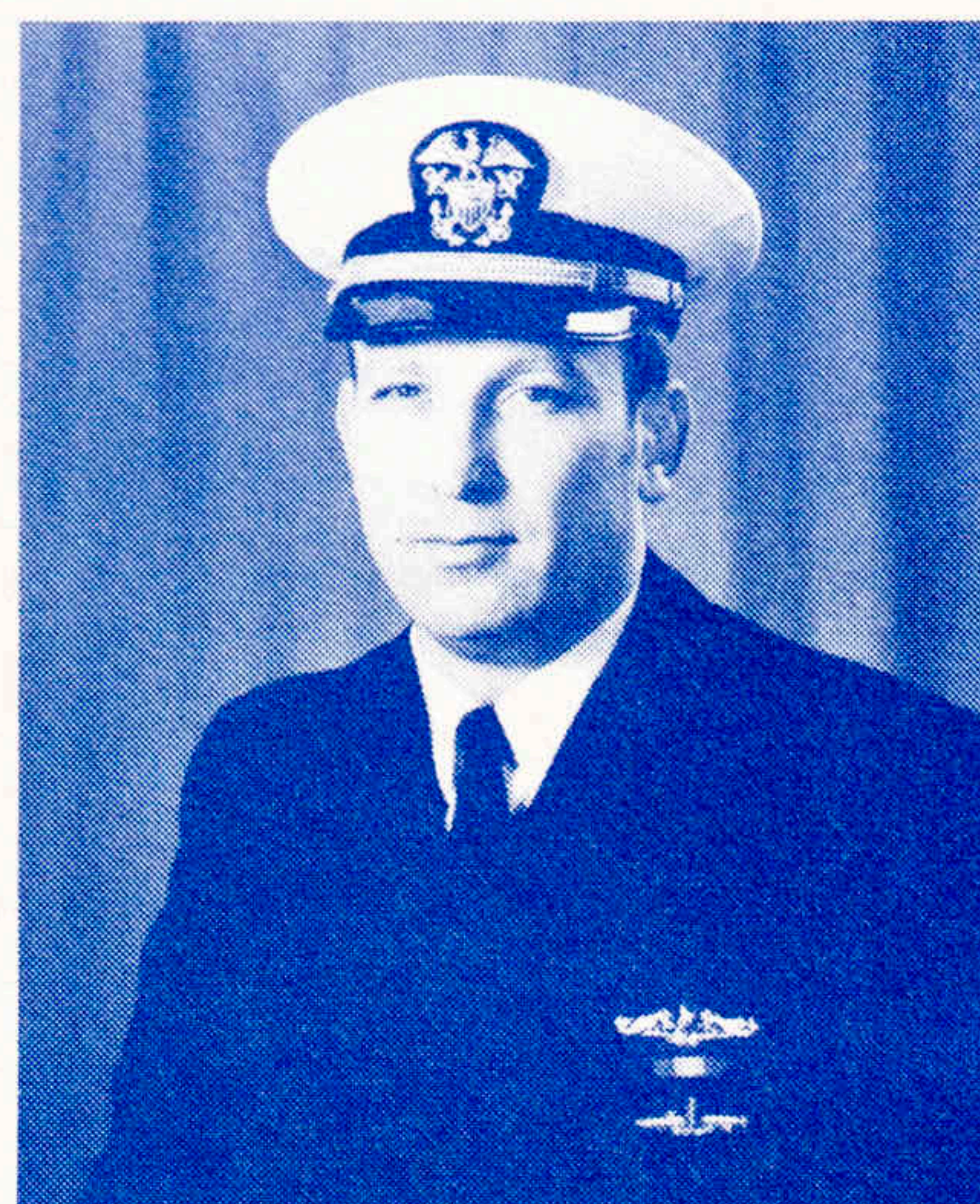




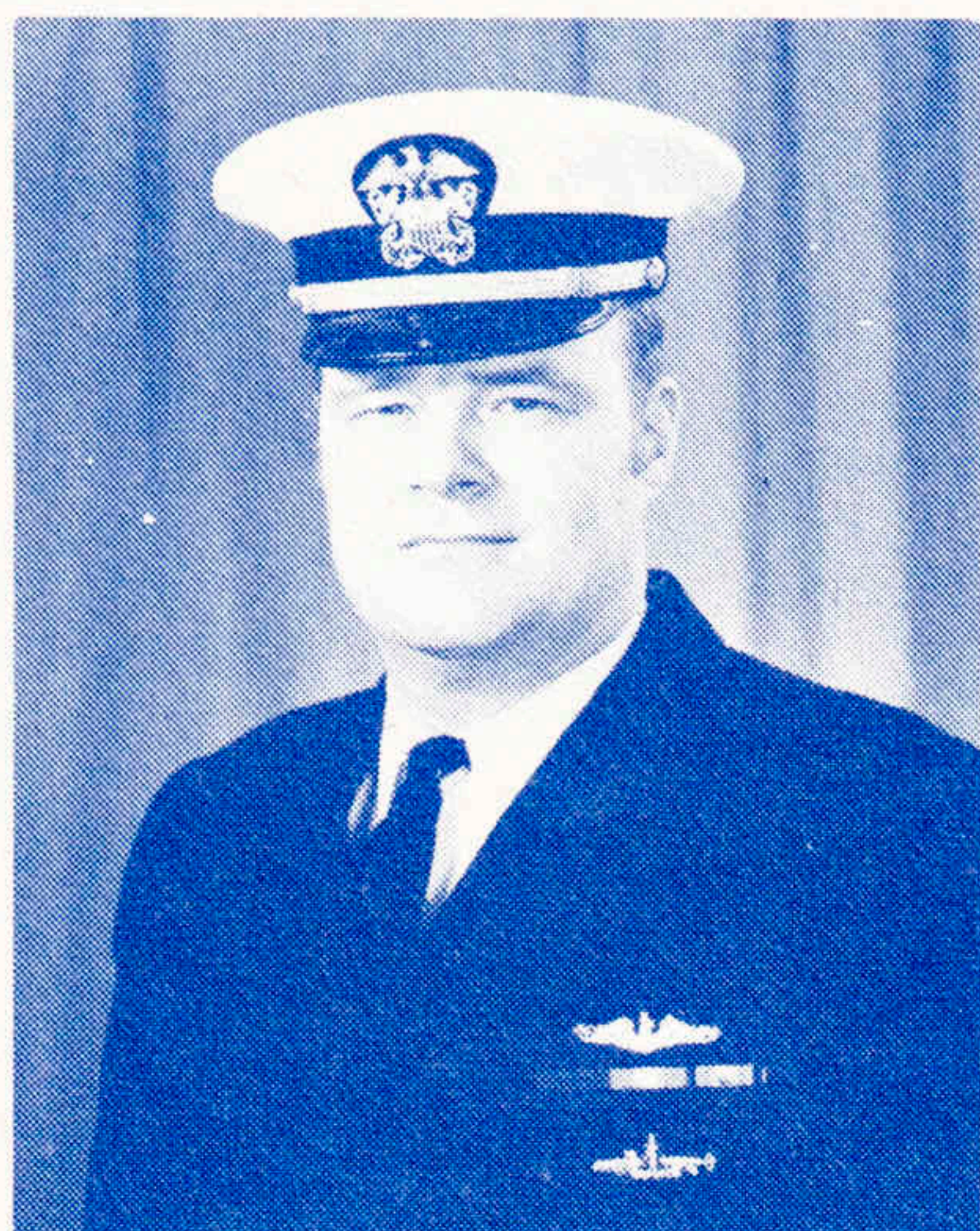
**LCDR ALVIN H. PAUOLE, USN**  
Executive Officer  
Hanalei, Hawaii



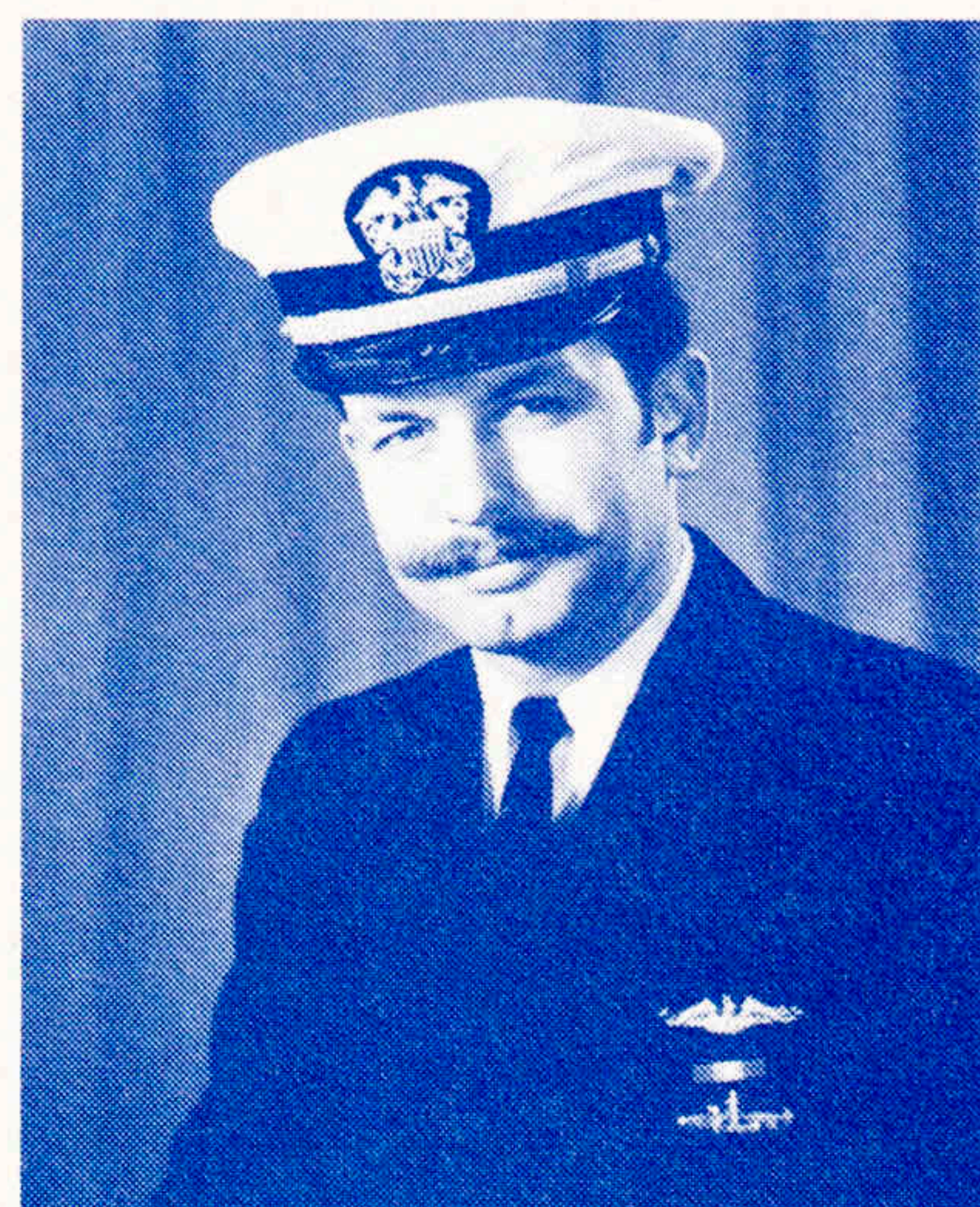
**LCDR LARRY R. MARSH, USN**  
Navigator  
Des Plaines, Illinois



**LCDR CHARLES K. McCOY, USN**  
Engineer  
Jackson, Mississippi



**LT BILLY L. HEID, USN**  
Main Propulsion Assistant  
Lincoln Park, Michigan



**LT CHARLES W. ROWLEY, USN**  
Weapons Officer  
Urbana, Illinois



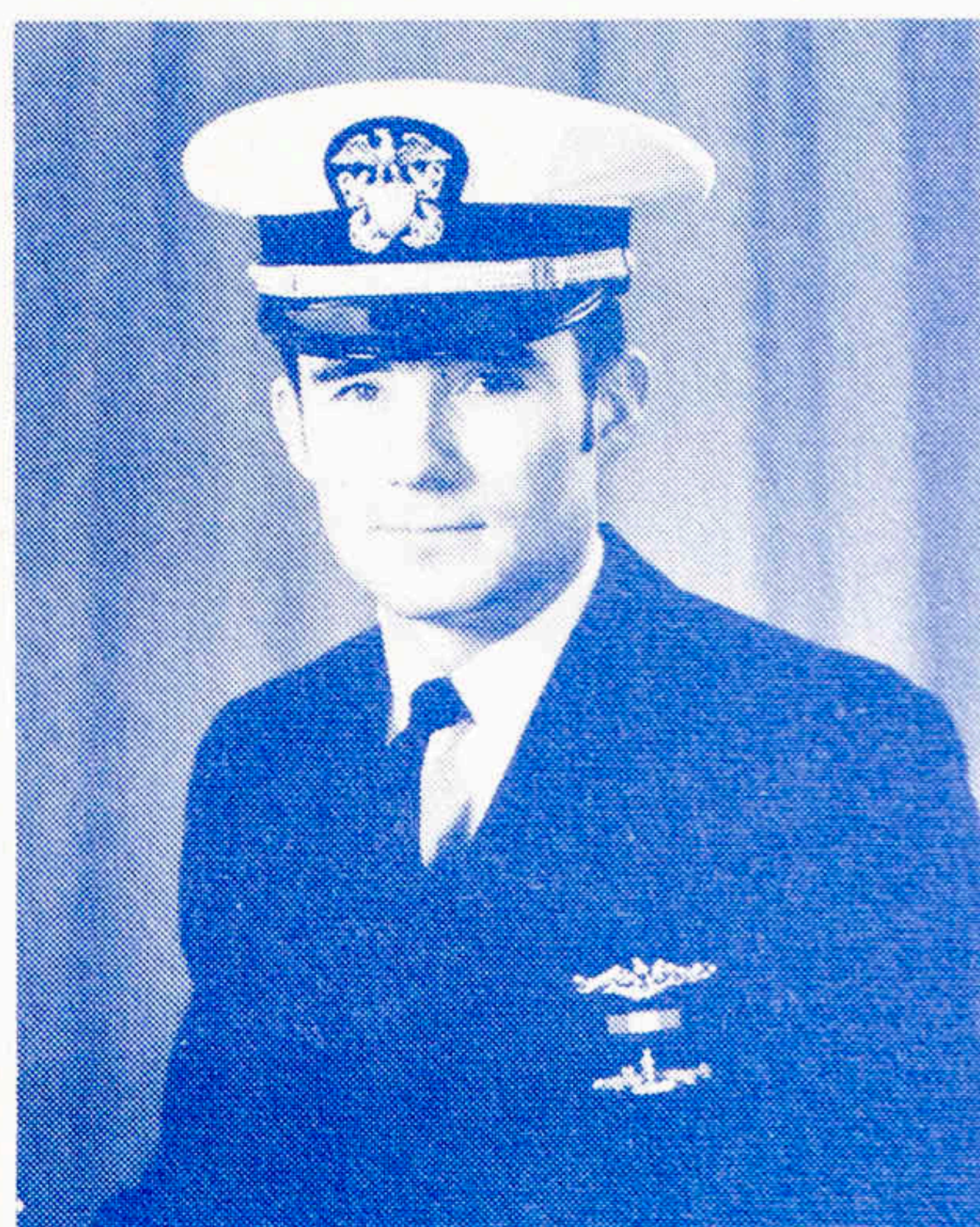
# Officers



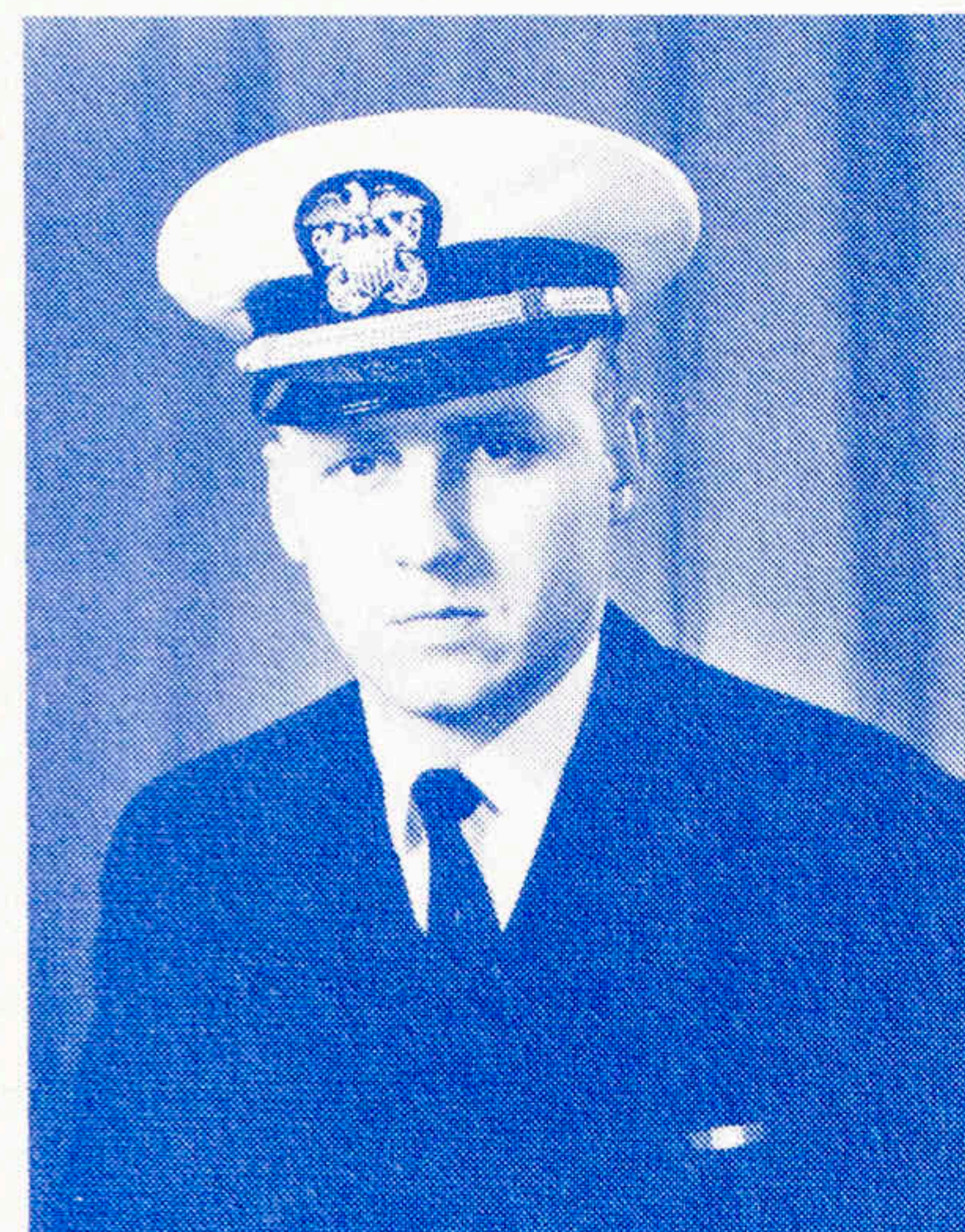
**LT RICHARD L. MICHAUX, USN**  
Damage Control Assistant  
Myrtle Beach, South Carolina



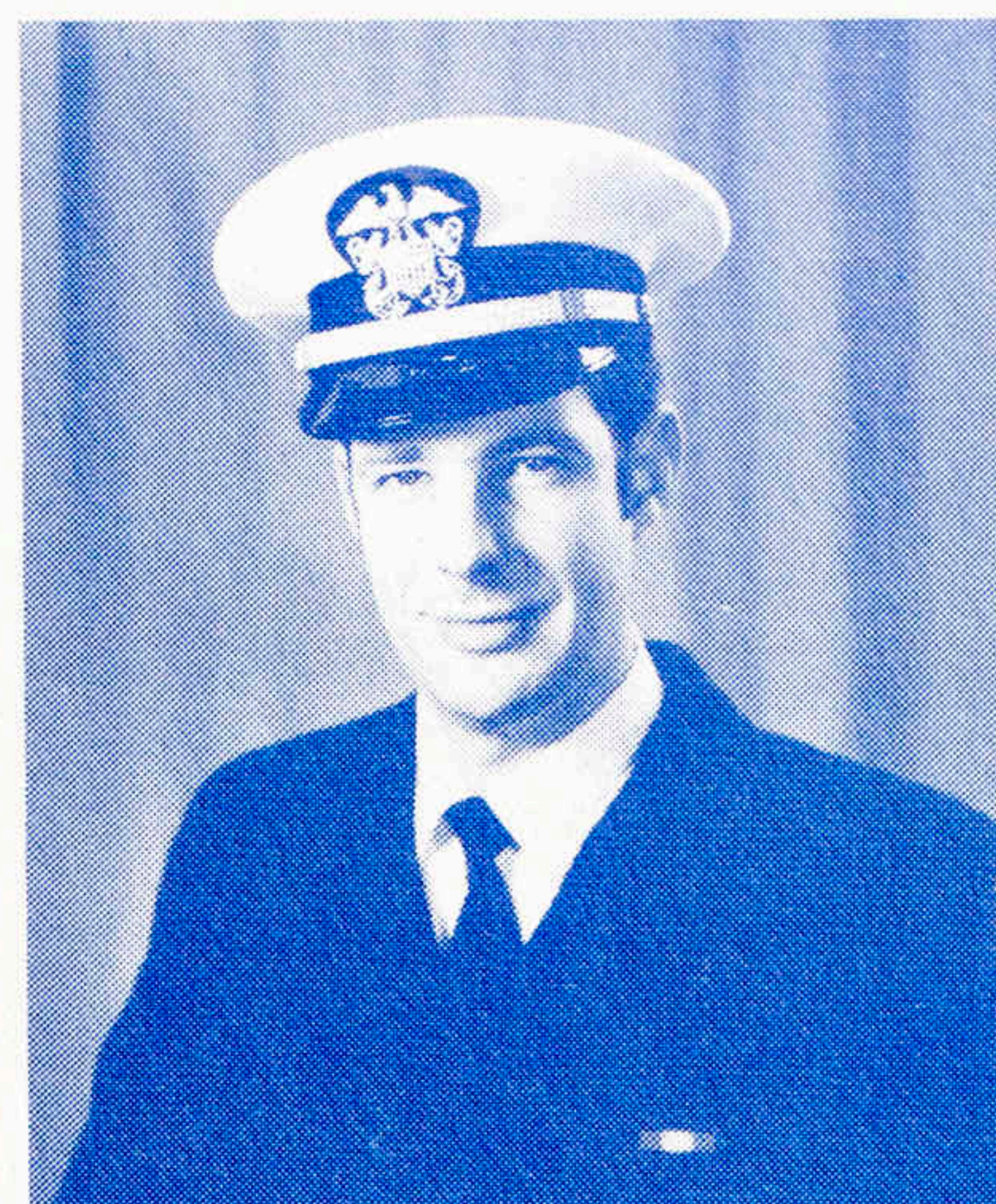
**LT ANDREW N. TORIELLO, USN**  
Operations Officer  
Niles, Ohio



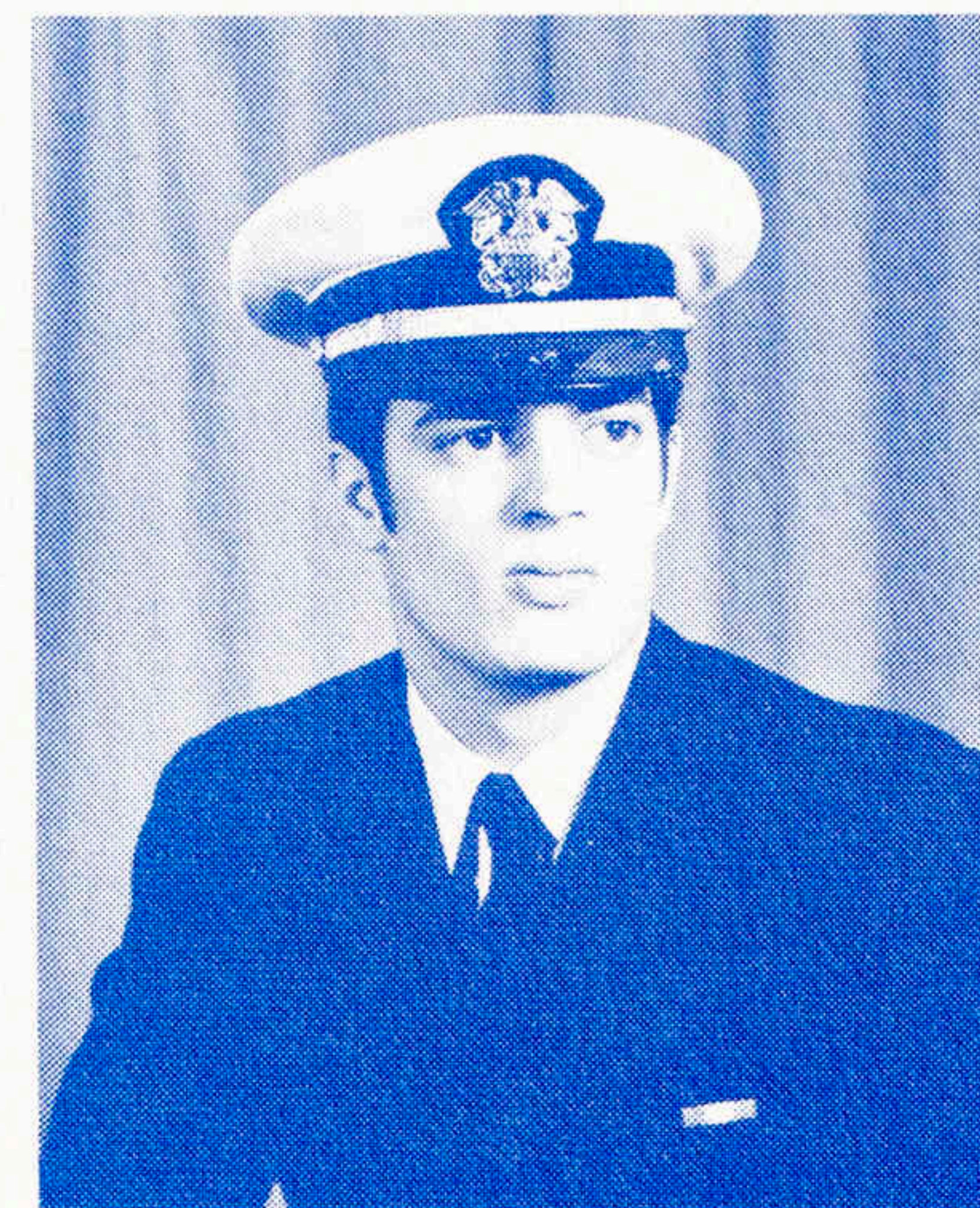
**LT JAMES A. LONG, III, USN**  
Electrical Officer  
Baltimore, Maryland



**LTJG ROGER C. JARMAN, USN**  
Communications Officer  
Garner, North Carolina

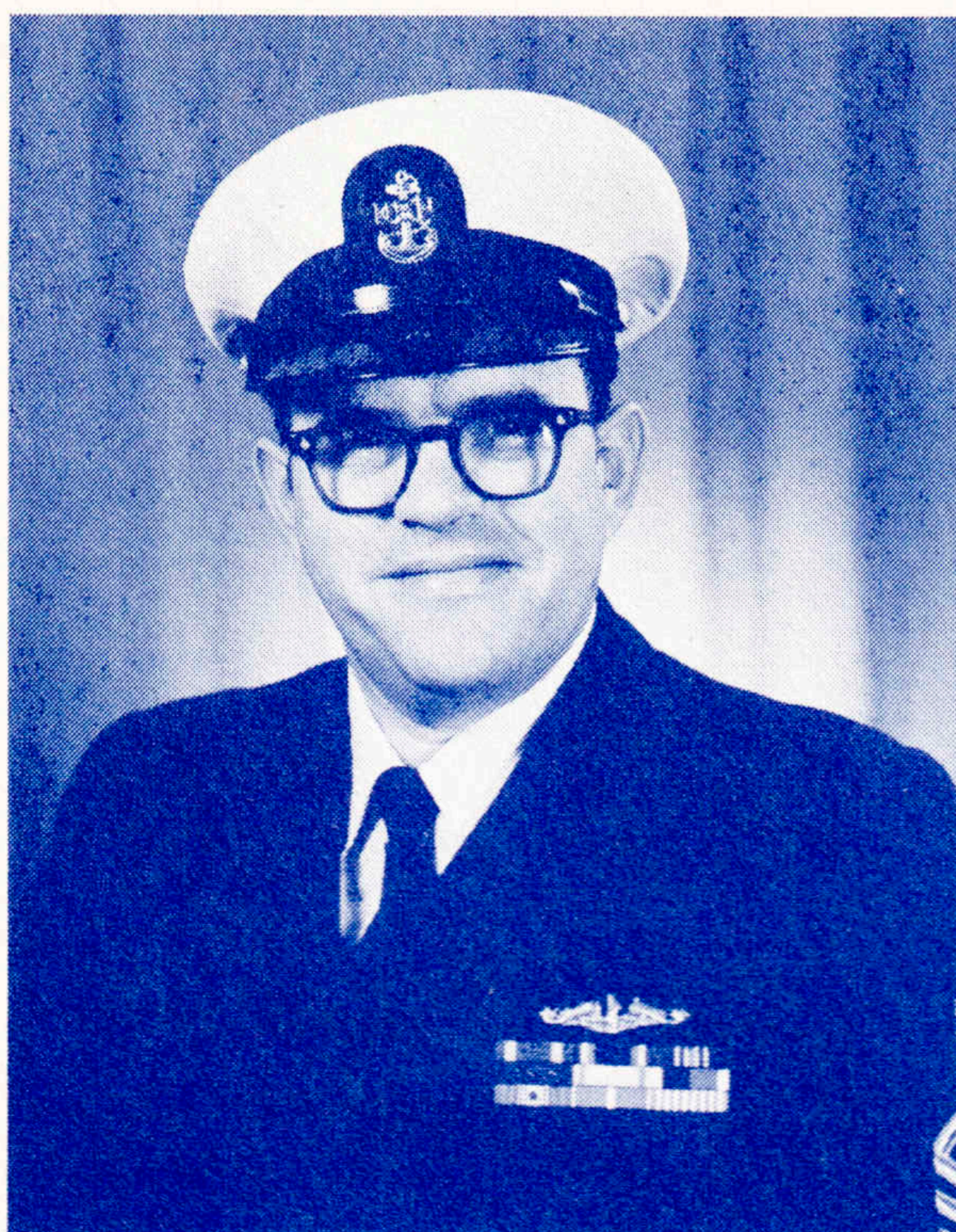


**LTJG RICHARD A. WERNER, USNR**  
First Lieutenant  
Dallas, Texas



**LTJG DANIEL H. DILLER, SC, USN**  
Supply Officer  
Lancaster, Pennsylvania





## *Chief of the Boat*

FTCS(SS) JAMES E. WHITE, USN  
Paradise, California

## *Roster of Chief Petty Officers*

STCS(SS) FRED B. FULLER, USN  
EMCS(SS) HENRY L. TARDIFF, USN  
QMCS(SS) CLINTON R. WHITE, USN  
ETCS(SS) WAYNE A. RUSSELL, JR, USN  
MMC(SS) WALTER H. SEIFERT, USN  
RMC(SS) THEODORE A. VIGNAUX, USN  
ETC(SS) HAROLD E. RUBLE, JR., USN  
TMC(SS) DONALD E. TETSCHLAG, USN  
ICC(SS) BARRETT A. METZLER, USN



## The Crew

MM1(SS) James R. Adams, Jr, USN  
ETR2(SS) Kris L. Anderson, USN  
ST1(SS) Frank J. Brown, USN  
TM2(SS) James S. Brown, USN  
MM3(SU) George D. Bryans, USN  
QM1(SS) John T. Cable, USN  
EM2(SU) Ronald L. Cammers, USN  
FA(SU) Charles W. Carney, JR, USN  
CS1(SS) Donald A. Carroll, USN  
MM2(SU) Robert J. Carroll, USN  
MM1(SS) Robert H. Clark, USN  
MM1(SS) Richard W. Conserriere, USN  
ETR3(SU) Rudy Cordova, USN  
CSSA(SU) Anthony G. Czerwinski, USN  
MM2(SS) Michael J. Davidson, USN  
TMSA(SU) Van (n) Deshotels, USN  
YN3(SU) Larry D. Dietrich, USN  
RMSA(SU) Gary C. Drouin, USN  
SA(SU) John R. Eckhard, USN  
EM1(SS) Benjamin F. Edmundson, USN  
ETR2(SU) Richard L. Evans, USN  
SD2(SU) Antonio S. Farinas, USN  
EM3(SU) James S. Castle, USN  
IC3(SU) Carey L. Francis, Jr, USN  
MM3(SU) James W. Friedman, USN  
ETR2(SS) Calvin C. Gifford, USN  
MM2(SU) Gary J. Gochenour, USN  
MM1(SS) Louis A. Gray, III, USN  
ST1(SS) Charles D. Grady, USN  
FTG2(SU) Paul J. Hannafey, III, USN  
ETR2(SU) Johnny G. Harsey, USN  
CS2(SS) Alan D. Hessenius, USN  
MM1(SS) Gary L. Hill, USN  
MM2(SS) Thomas R. Hill, USN  
HM1(SS) Edward C. Hobday, USN  
STS2(SS) Gary H. Holt, USN  
SN(SU) Emmett C. Hurt, USN  
YN1(SS) Henry E. Jackson, USN  
MM2(SU) Michael A. Jantsch, USN  
TM3(SU) Johnny M. Jones, USN  
ETN2(SU) Michael G. Jones, USN

MM2(SU) Terry L. Julius, USN  
MM2(SS) James D. Kahl, USN  
MM2(SS) David C. Kazmark, USN  
IC1(SS) Geoffrey M. Kinch, USN  
MM2(SU) William T. Knapp, USN  
ETN2(SS) Thomas V. Koehler, USN  
FTG2(SS) John W. Lamerson, USN  
STS2(SU) Robert A. Lawler, USN  
MM3(SU) James H. Leary, USN  
SK2(SS) Edwin L. Linard, USN  
MM1(SS) Robert G. Lusignan, USN  
EM1(SS) George H. Mabry, USN  
QM1(SS) William W. Madigan, USN  
SA(SU) William P. Marquis, USN  
IC3(SU) Robert G. McGee, USN  
SD3(SS) George A. Newkirk, USN  
IC3(SS) Dan A. Opel, USN  
STS2(SU) Richard E. Olswold, USN  
QMSN(SU) James W. Parks, USN  
ETR2(SS) Carl N. Rasmussen, USN  
ETN3(SS) George E. Robaldo, Jr, USN  
FA(SU) Kenneth E. Rogers, USN  
EN3(SU) Leo W. Ryan, Jr, USN  
IC1(SS) Stephen (n) Schlachter, USN  
ET1(SS) George P. Sereno, USN  
EM1(SS) Marion R. Sisemore, USN  
ET1(SS) James L. Sollis, USN  
TM3(SS) Buster C. Stepp, USN  
EM2(SU) Samuel J. Stewart, USN  
SA(SU) Lyle T. Suitor, USN  
RM2(SU) William A. Thomason, USN  
SA(SU) James H. Tumblin, USN  
STS2(SU) James R. Turriff, USN  
SA(SU) William R. Twitchell, USN  
FA(SU) Steven G. Updike, USN  
MM1(SS) William F. Vahey, Jr, USN  
SA(SU) Mark D. Walker, USN  
EN3(SS) Ted (n) Wenta, USN  
MM2(SS) Jimmy D. Wiser, USN  
STS2(SU) Anthony B. Wylie, USN  
RM1(SS) Max J. Zetcher, USN



