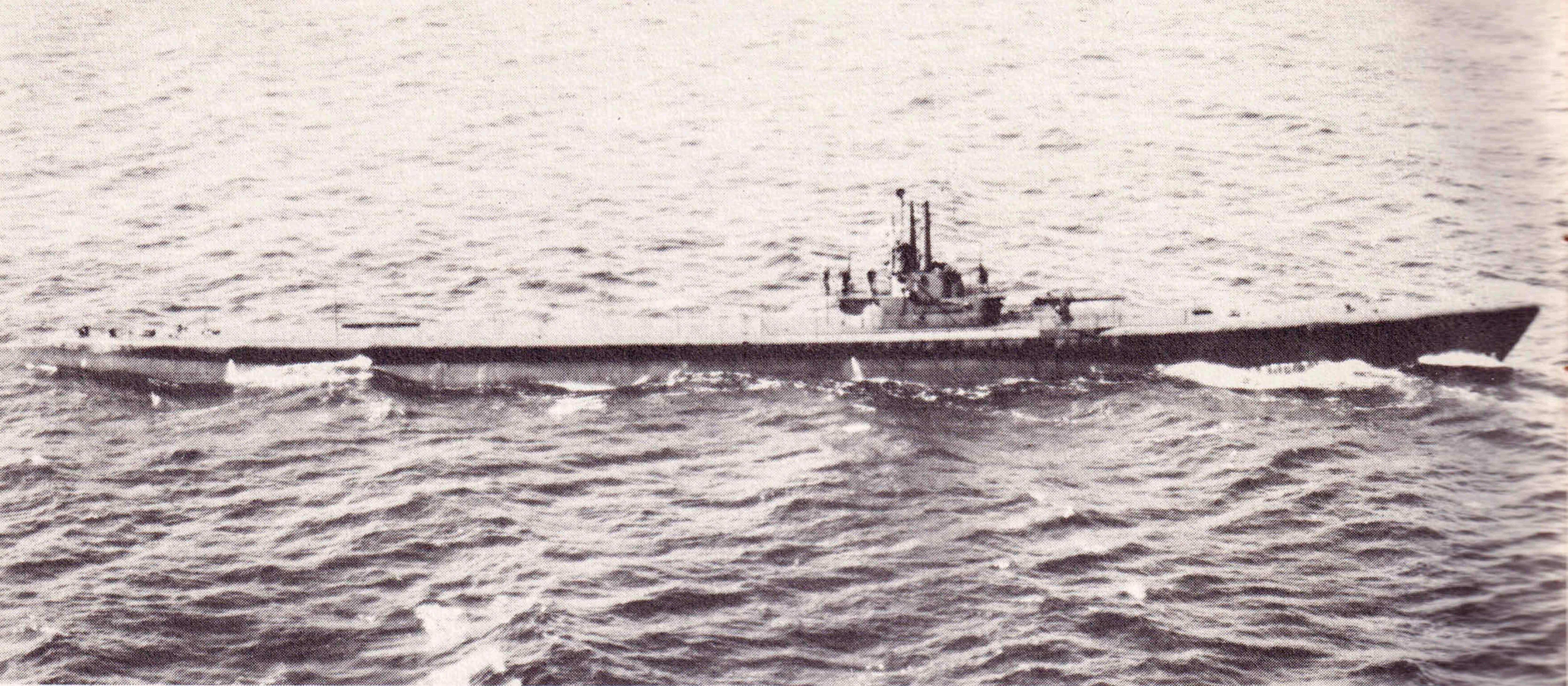


# USS BATFISH (SSN681)



COMMISSIONING  
September 1, 1972

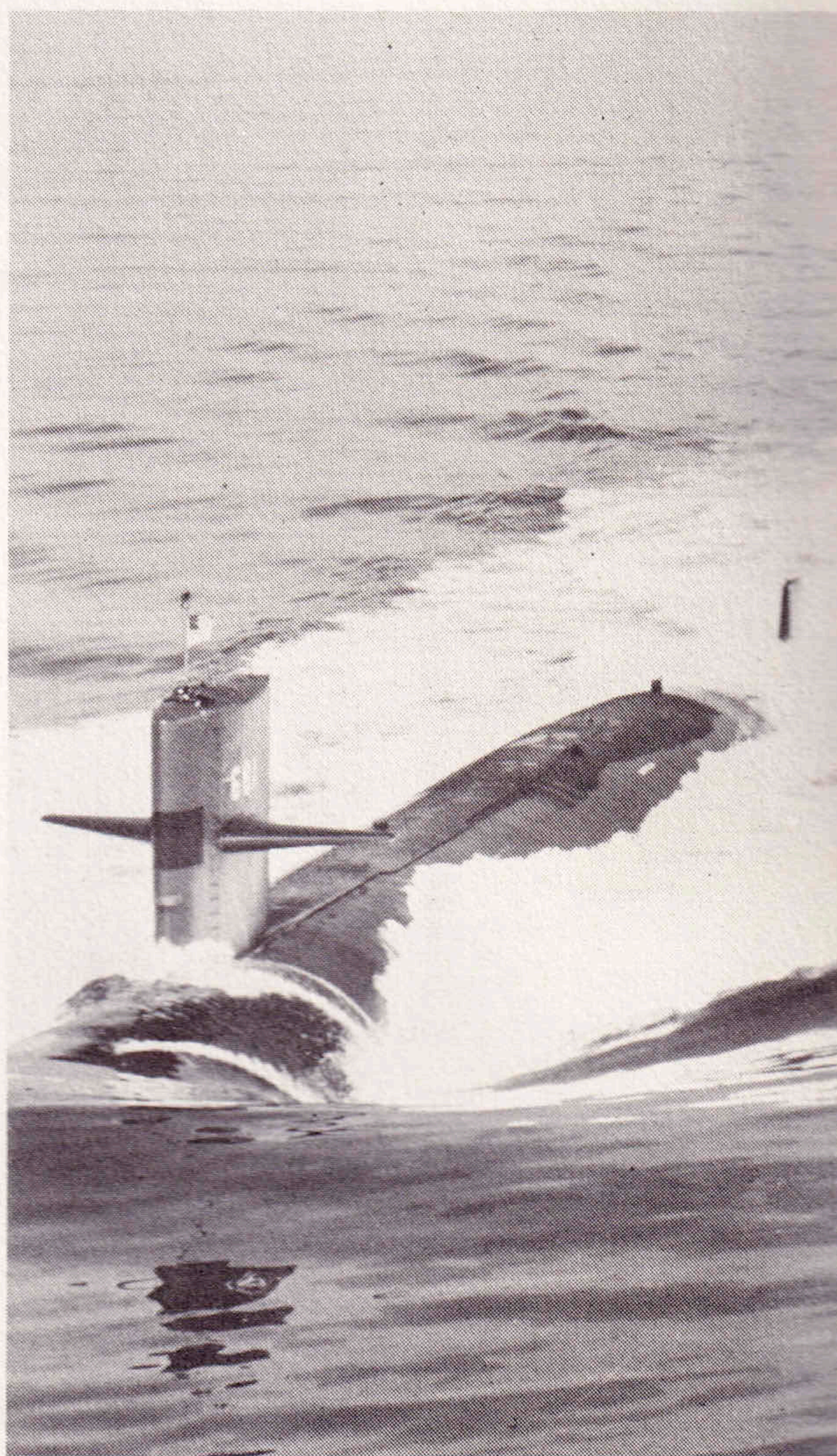




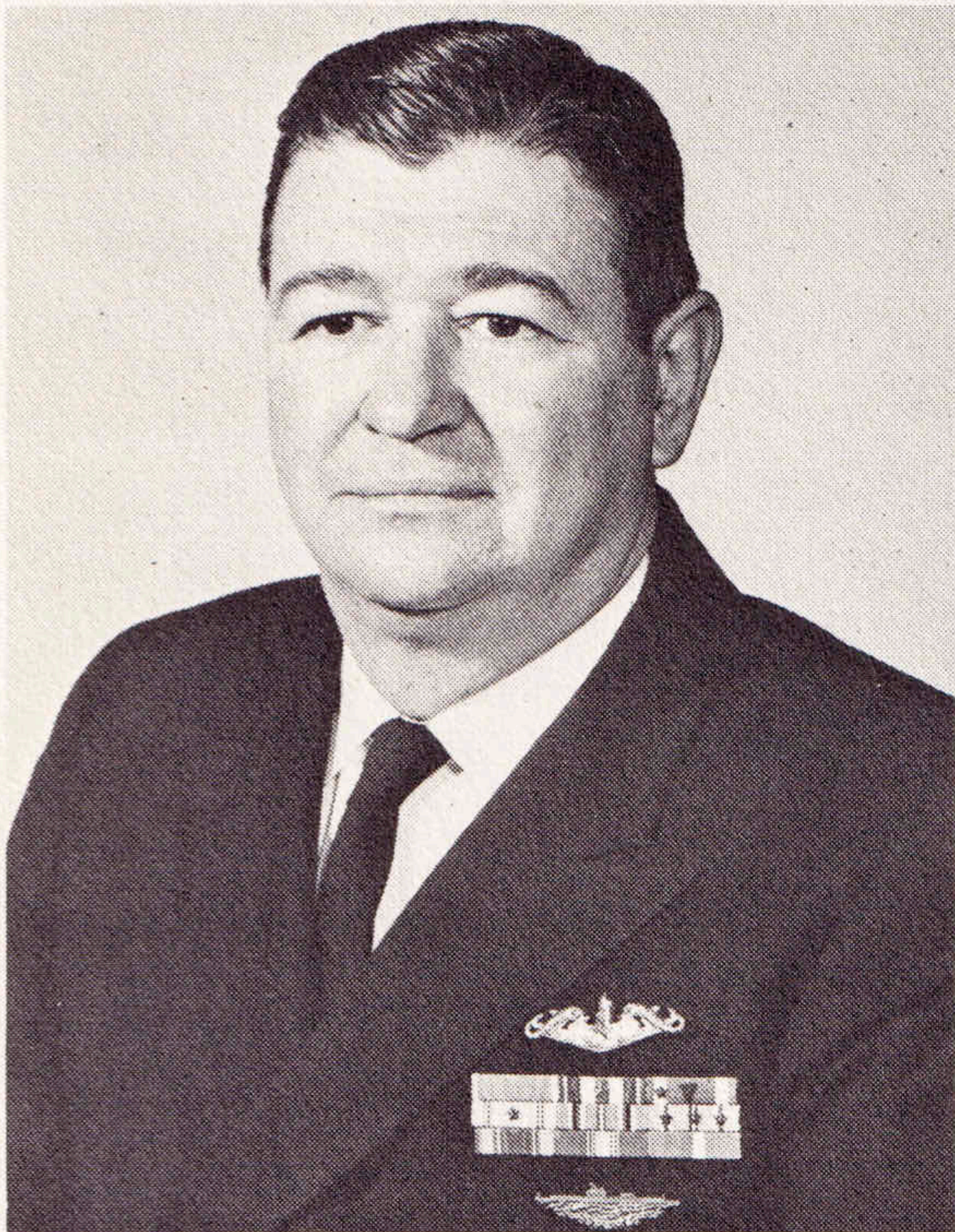
## USS BATFISH, PAST AND PRESENT

The first submarine BATFISH (SS 310) was built at Portsmouth Naval Shipyard, Portsmouth, New Hampshire and was commissioned on 21 August 1943. During World War II she completed seven war patrols in the Pacific which won her a Presidential Unit Citation and Nine Battle Stars. She is the only United States Submarine having the distinction of sinking three enemy submarines in a four day period. She was decommissioned and assigned to the Reserve Fleet in August 1958. In the summer of 1959 she was assigned as a Naval Reserve training Ship at New Orleans, Louisiana. She continued to serve in this capacity until her name was struck from the Naval Vessel Register on 1 November 1969.

The nuclear powered submarine BATFISH (SSN 681) was built by the Electric Boat Division of General Dynamics Corporation at Groton, Connecticut. Her keel was laid on 9 February 1970 and she was launched on 9 October 1971 under the sponsorship of Mrs. Arthur R. Gralla, wife of Vice Admiral Gralla, Commander of the Military Sea Lift Command. On the right is a picture of BATFISH (SSN 681) while underway on her very successful initial sea trial.







**PRINCIPAL SPEAKER  
REAR ADMIRAL WALTER L. SMALL  
DEPUTY CHIEF OF NAVAL OPERATIONS  
[PLANS AND POLICY]**

Rear Admiral Walter Lowry Small has a Naval career spanning nearly 40 years. Appointed Midshipman from North Carolina, he entered the Naval Academy in 1934, was commissioned Ensign in the U.S. Navy in 1938, and reached his present rank in 1965.

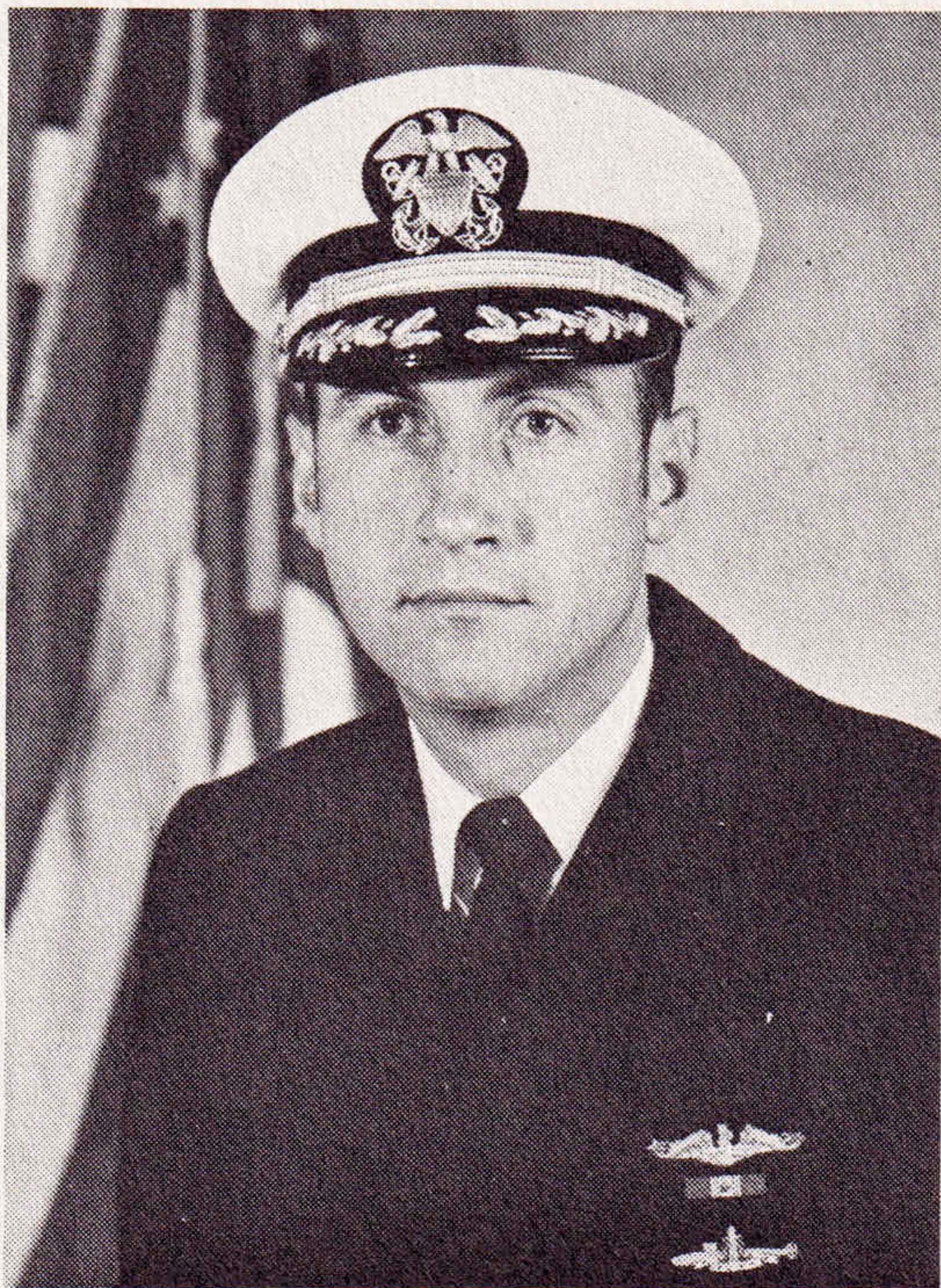
Rear Admiral Small turned to the Submarine Service early in his career, attending the New London Submarine School in 1940, then serving aboard a recommissioned World War I submarine until 1941. During World War II he was Executive Officer of *USS Flying Fish* and *USS Icefish* and Commanding Officer of *USS Batfish*. For his war service he was awarded the Silver Star Medal, a Gold Star in lieu of the second Silver Star Medal, and the Navy Commendation Medal with Gold Star and Combat "V".

In the postwar years Rear Admiral Small's duties included both sea and shore duty. During this time he served as instructor at the Naval Academy, personal aide to Admiral Nimitz, commanding officer of surface ships and submarines, department head at the Submarine School, submarine division commander, and student at the Armed Forces Staff College and the Naval War College. A series of increasingly responsible staff and operational assignments followed. In 1965 he was awarded the Legion of Merit "for exceptionally meritorious service...as Head of the Navy Plans Branch..." For "exceptionally meritorious service..." as Commander Middle East Force he was awarded a Gold Star in lieu of a second Legion of Merit in 1967. He became Commander Submarine Force, U.S. Pacific Fleet in 1968; for his outstanding service in this capacity he was awarded the Distinguished Service Medal. He was assigned to the Office of the Chief of Naval Operations in 1970 as Director of the Politico-Military Policy Division, and in March, 1972 was designated Assistant Deputy Chief of Naval Operations (Plans and Policy).

In addition to the decorations mentioned, Rear Admiral Small has the American Defense Service Medal with star; the American Campaign Medal; Asiatic-Pacific Campaign Medal with three operation stars; the World War II Victory Medal; the National Defense Service Medal with bronze star; Philippine Liberation Ribbon; and the Submarine Combat Insignia with one silver and four bronze stars.

Rear Admiral Small is married to the former Jane VanRensselaer Harris of Toledo, Ohio. They have two daughters, Elizabeth Craven Small and Jane Christian Small.





**COMMANDING OFFICER  
RICHARD E. ENKEBOLL**

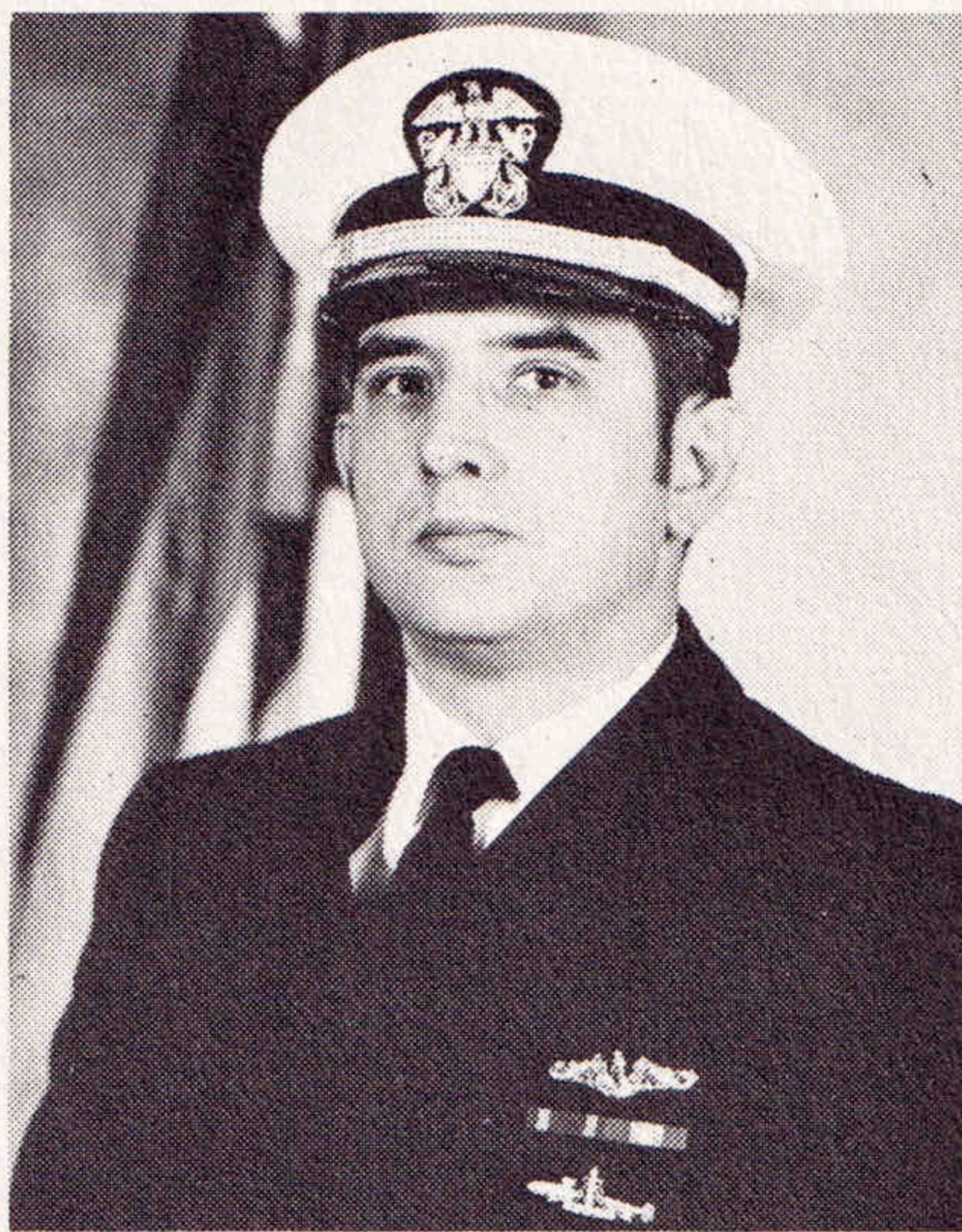
Commander Richard E. Enkeboll, Commanding Officer of the USS BATFISH (SSN 681), was born in Humboldt, Arizona in 1935. He was a student at Santa Monica, California in 1953 when appointed to the United States Naval Academy, Annapolis, Maryland as a Midshipman. He received his commission as Ensign, U. S. Navy, with the Naval Academy Class of 1957.

Commander Enkeboll made a WESTPAC deployment aboard the destroyer USS BRINKLEY BASS (DD 887) before reporting to the Naval Submarine School in July 1958. After submarine training, Commander Enkeboll served in the USS HARDER (SS 568) until April 1960 when he commenced nuclear power training. Following attendance at the Navy Nuclear Power Training Unit in Windsor, Connecticut and Bettis Atomic Power Laboratories in Pittsburgh, Pennsylvania, he reported in June 1961 to the precommissioning crew of the USS THOMAS A. EDISON (SSBN 610) (GOLD).

In December 1963, Commander Enkeboll reported to the USS ULYSSES S. GRANT (SSBN 631) for duty as the commissioning Engineer Officer of the GOLD crew. From 1966 to 1968, Commander Enkeboll earned his Master of Science degree in Operations Research from the Naval Postgraduate School in Monterey, California. After serving three years as the commissioning Executive Officer of USS SEAHORSE (SSN 669), Commander Enkeboll completed Prospective Commanding Officer training at the Division of Naval Reactors, Atomic Energy Commission in Washington, D. C. and at the Headquarters, Submarine Force Atlantic in Norfolk, Virginia. In August 1971, he reported to his fourth new construction nuclear submarine, USS BATFISH (SSN 681), for duty as Commanding Officer of the Precommissioning Unit.

Commander Enkeboll is married to the former Janet Lee Galm of Bethel, Connecticut. They have three children: Kris, Richard, and Marni.





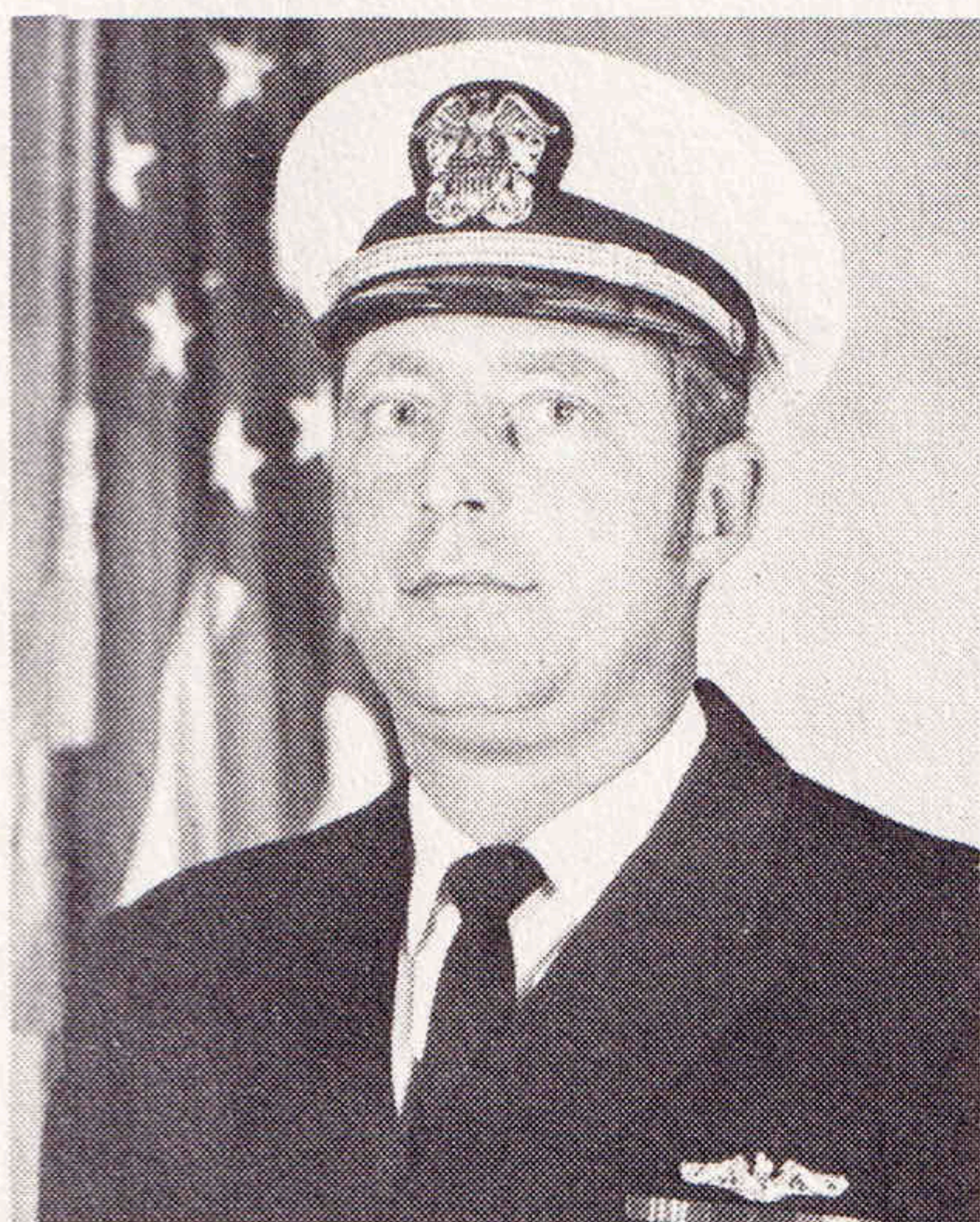
*Executive Officer*  
**Richard J. Noreika**  
**Lieutenant Commander, USN**



*Navigator/Operations Officer*  
**Grant R. Garritson**  
**Lieutenant Commander, USN**



*Engineer Officer*  
**Michael J. McGaraghan**  
**Lieutenant Commander, USN**



*Weapons Officer*  
**Gordon D. Helyer**  
**Lieutenant Commander, USN**



*Supply Officer*  
**Frederick P. McCarthy**  
**Lieutenant, SC, USNR**





# COMMISSIONING

## INVOCATION

The Reverend G. Richard Siener

## WELCOMING REMARKS AND INTRODUCTION OF BUILDER'S REPRESENTATIVE

Captain Albert E. Rose, USN

Supervisor of Shipbuilding, Conversion, and Repair, Groton

## REMARKS

Mr. Joseph D. Pierce

General Manager

Electric Boat Division of General Dynamics

## INTRODUCTION OF DIRECTOR, DEEP SUBMERGENCE SYSTEMS AND COORDINATOR FOR DEEP SUBMERGENCE PROGRAMS

Captain Albert E. Rose, USN

## REMARKS AND READING OF THE COMMISSIONING DIRECTIVE

Rear Admiral Walter N. Dietzen, USN

Director, Deep Submergence Systems and

Coordinator for Deep Submergence Programs

## COMMISSIONING AND ASSUMPTION OF COMMAND

Commander Richard E. Enkeboll

United States Naval







# NG PROGRAM

## RENDERING OF HONORS

### REMARKS BY THE COMMANDING OFFICER

Commander Richard E. Enkeboll, USN

### INTRODUCTION OF THE PRINCIPAL SPEAKER

Rear Admiral Walter N. Dietzen, USN  
Director, Deep Submergence Systems and  
Coordinator for Deep Submergence Programs

### ADDRESS

Rear Admiral Walter L. Small, USN, Assistant  
Deputy Chief of Naval Operations (Plans and Policy)

### BENEDICTION

The Reverend G. Richard Siener

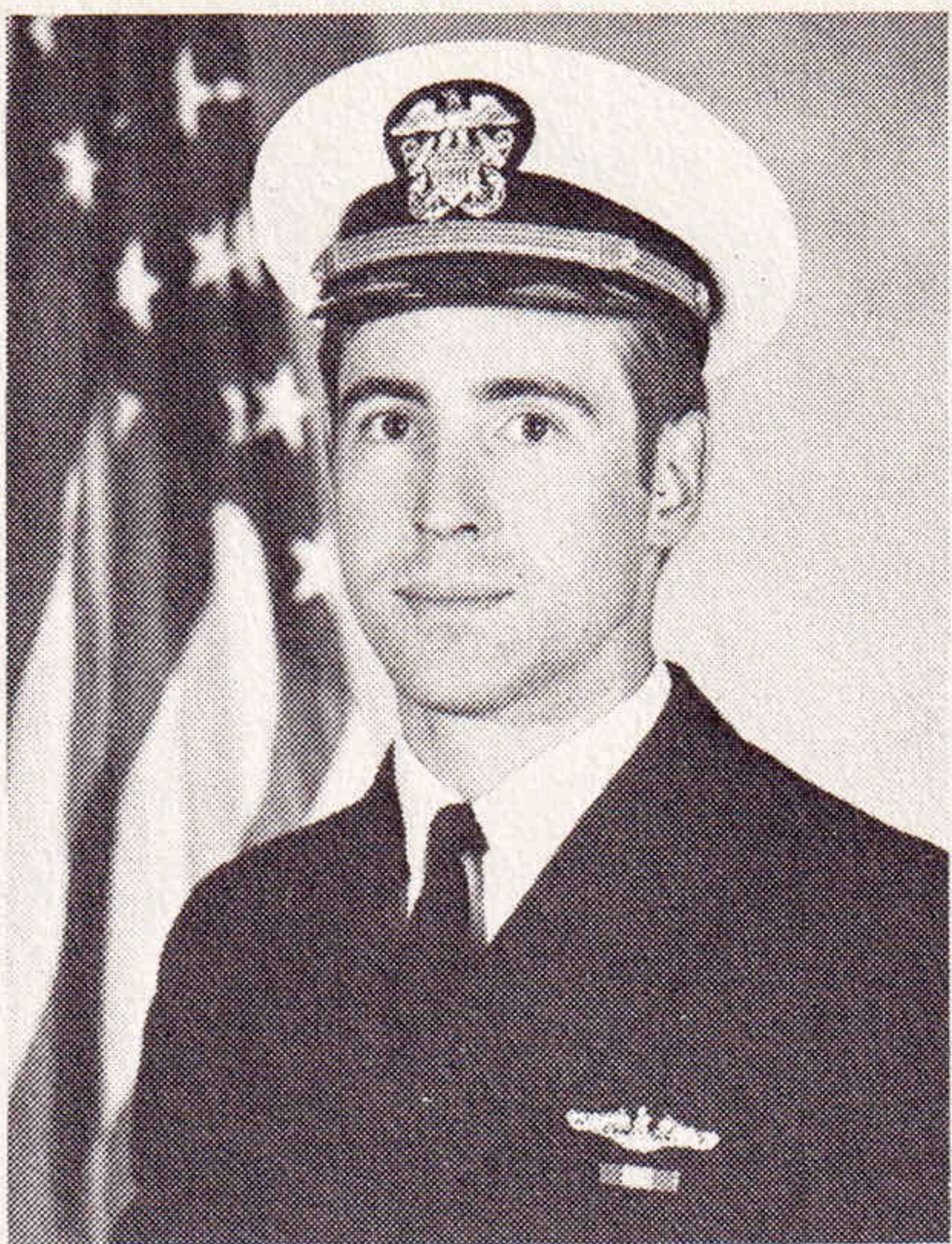
## HONORS AND DEPARTURE OF THE OFFICIAL PARTY

SIC

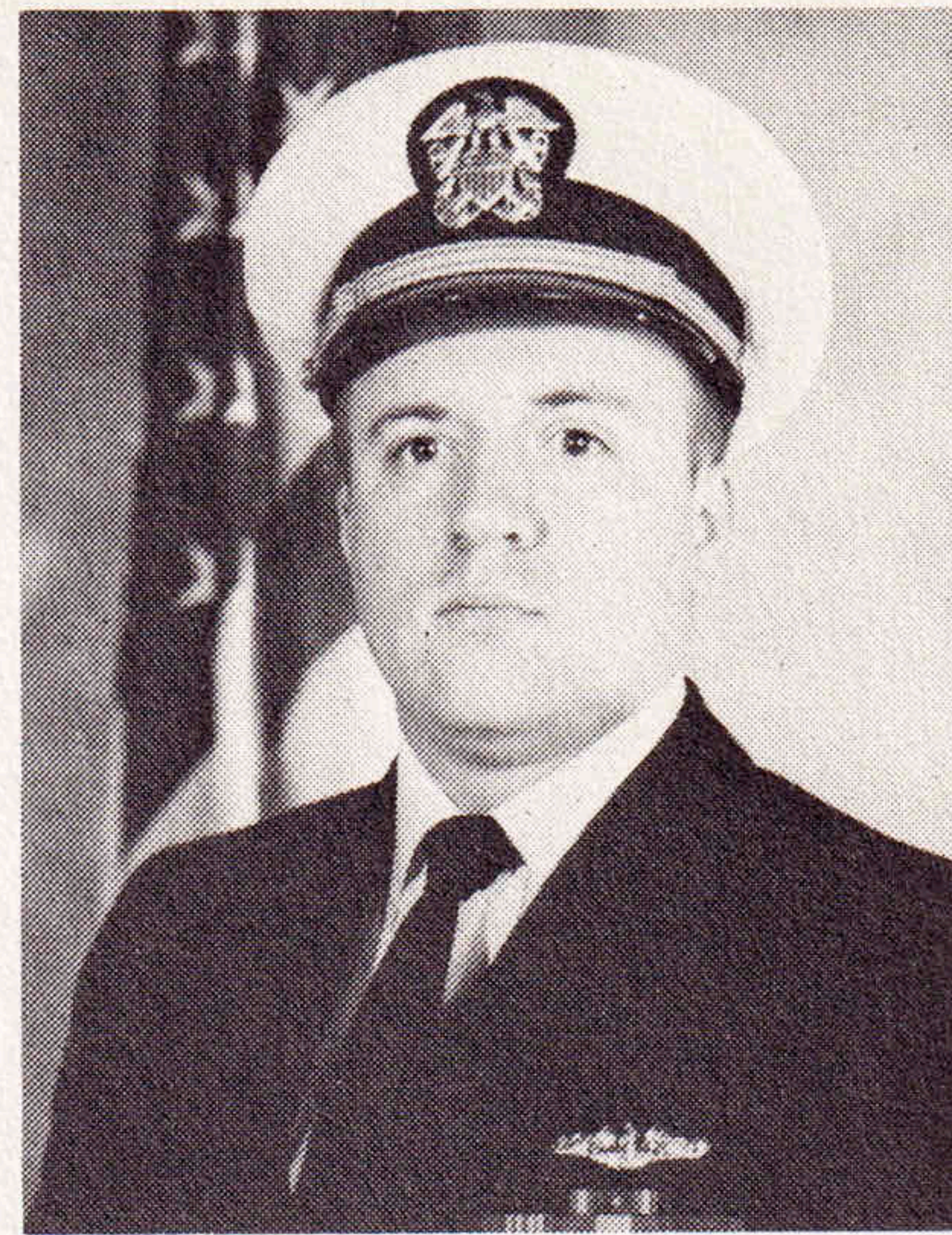
Submarine Base Band



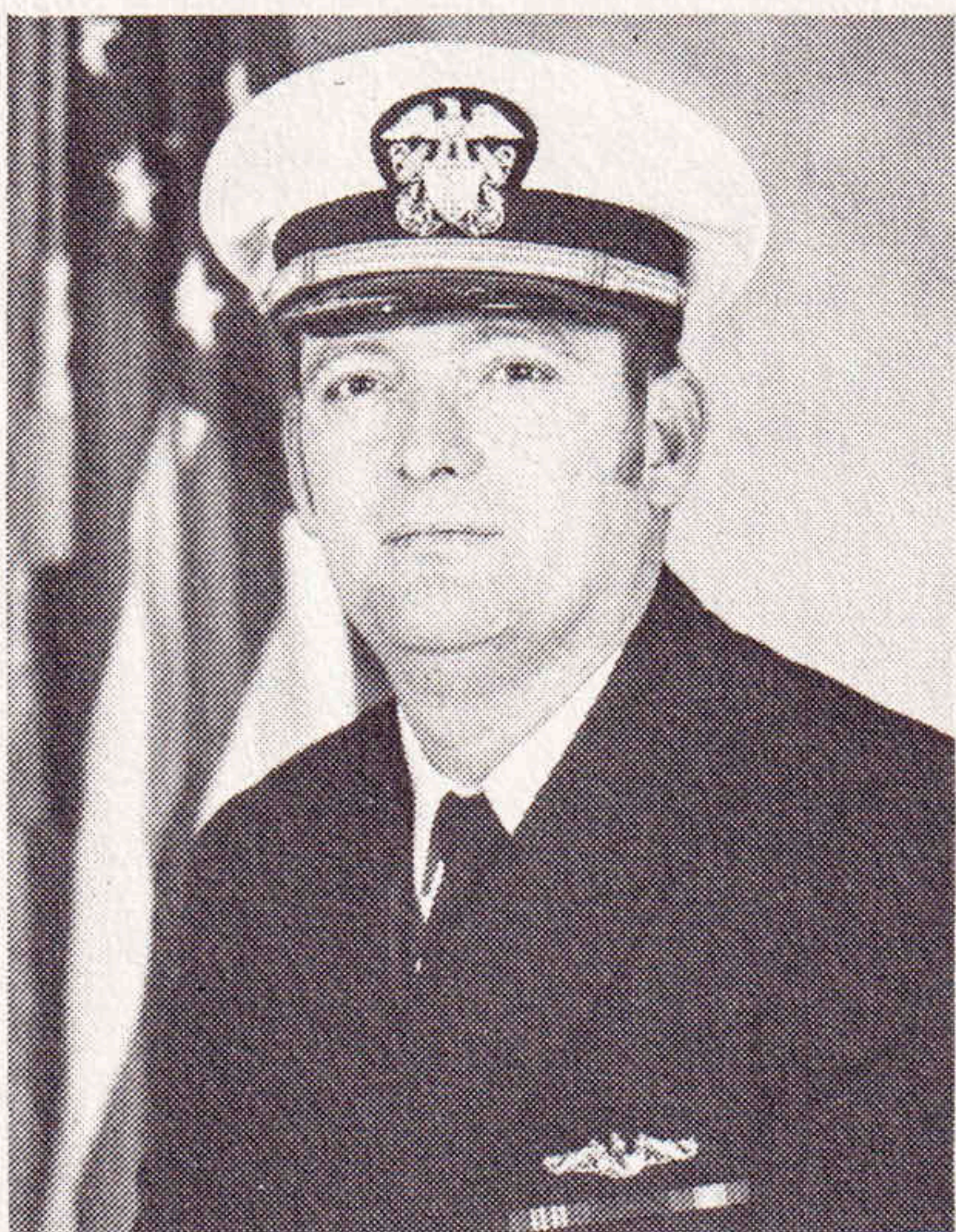




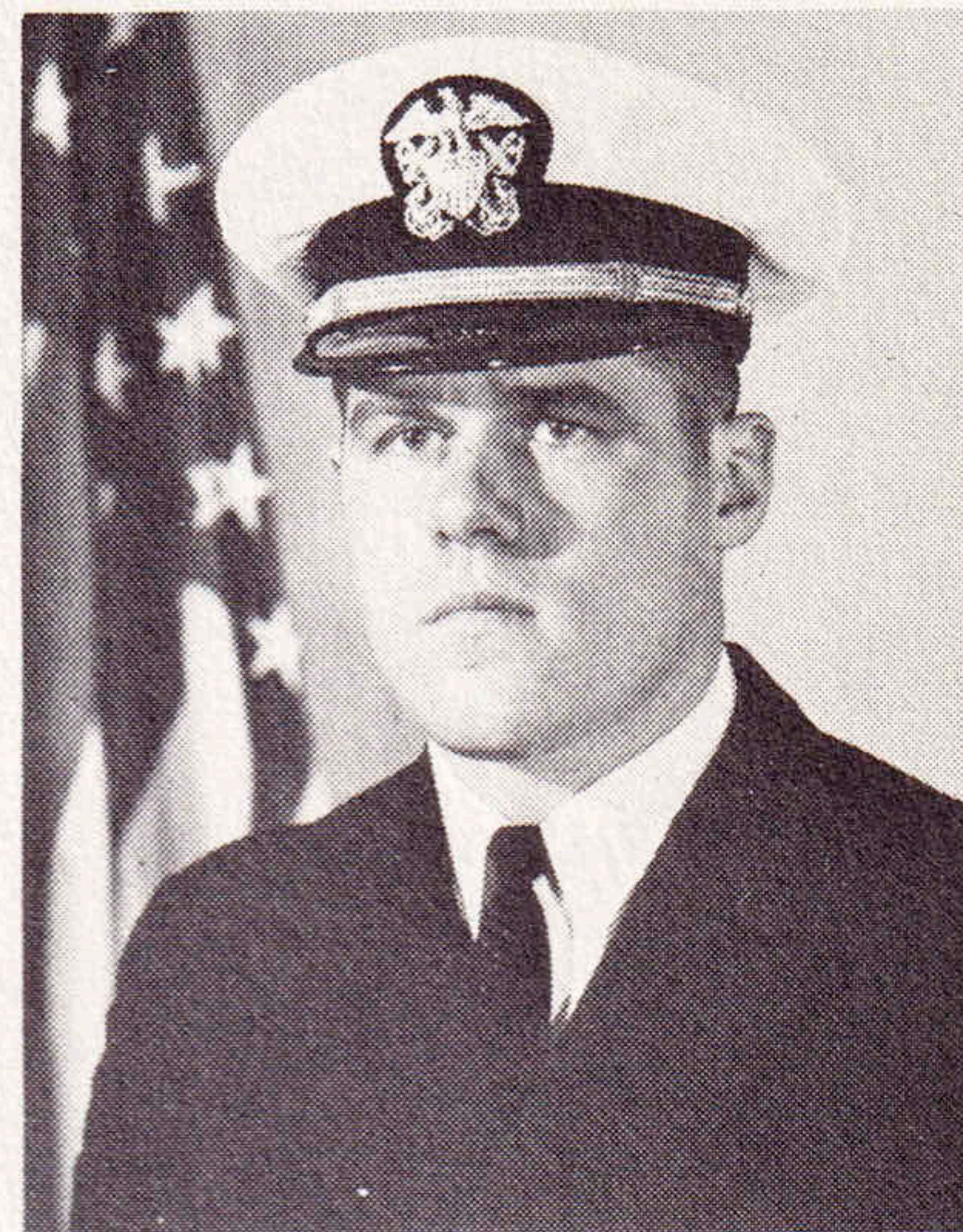
*Communications/Sonar Officer*  
**Bernard L. Simonsen**  
Lieutenant, USN



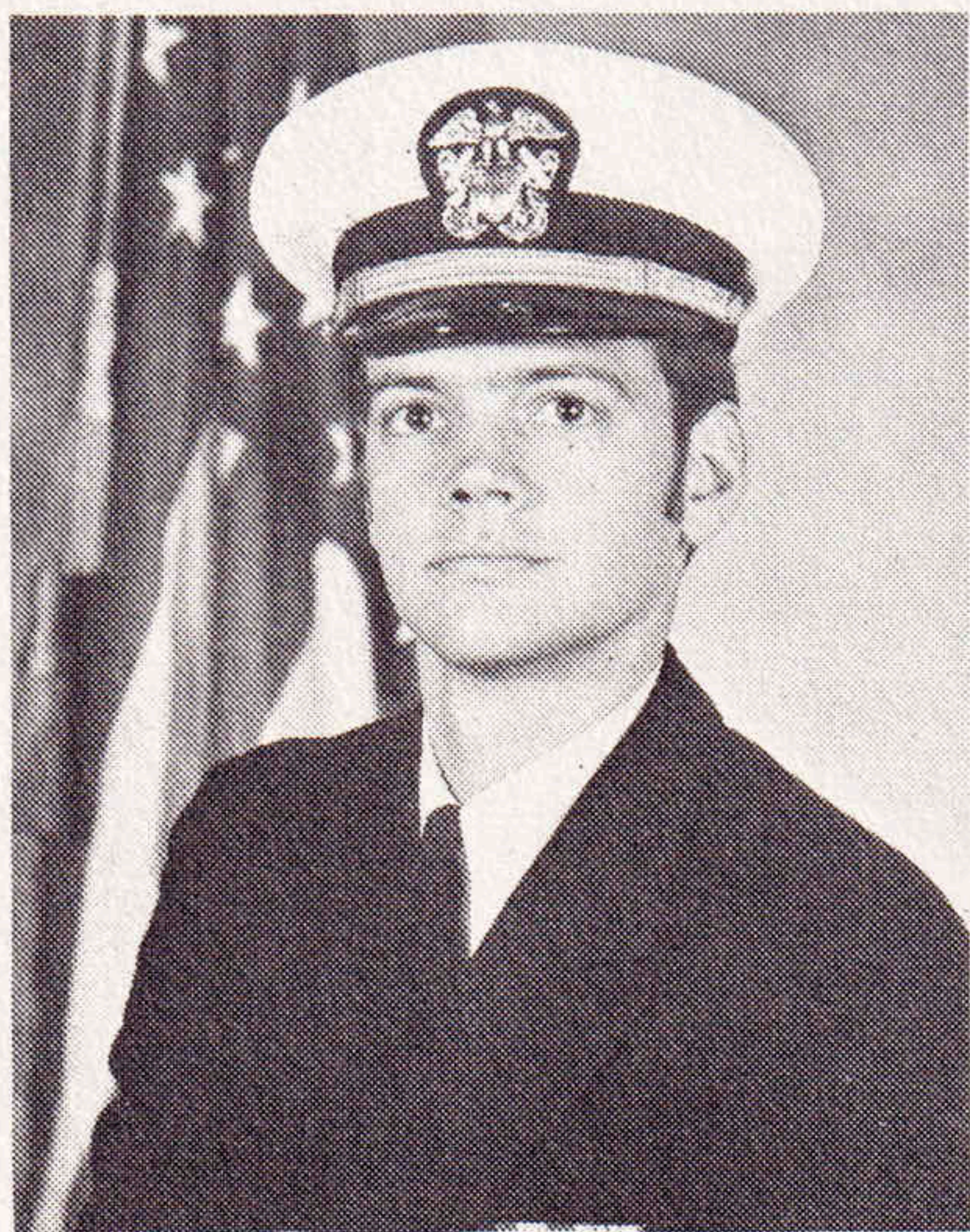
*Electrical Officer*  
**Michael D. Martin**  
Lieutenant, USN



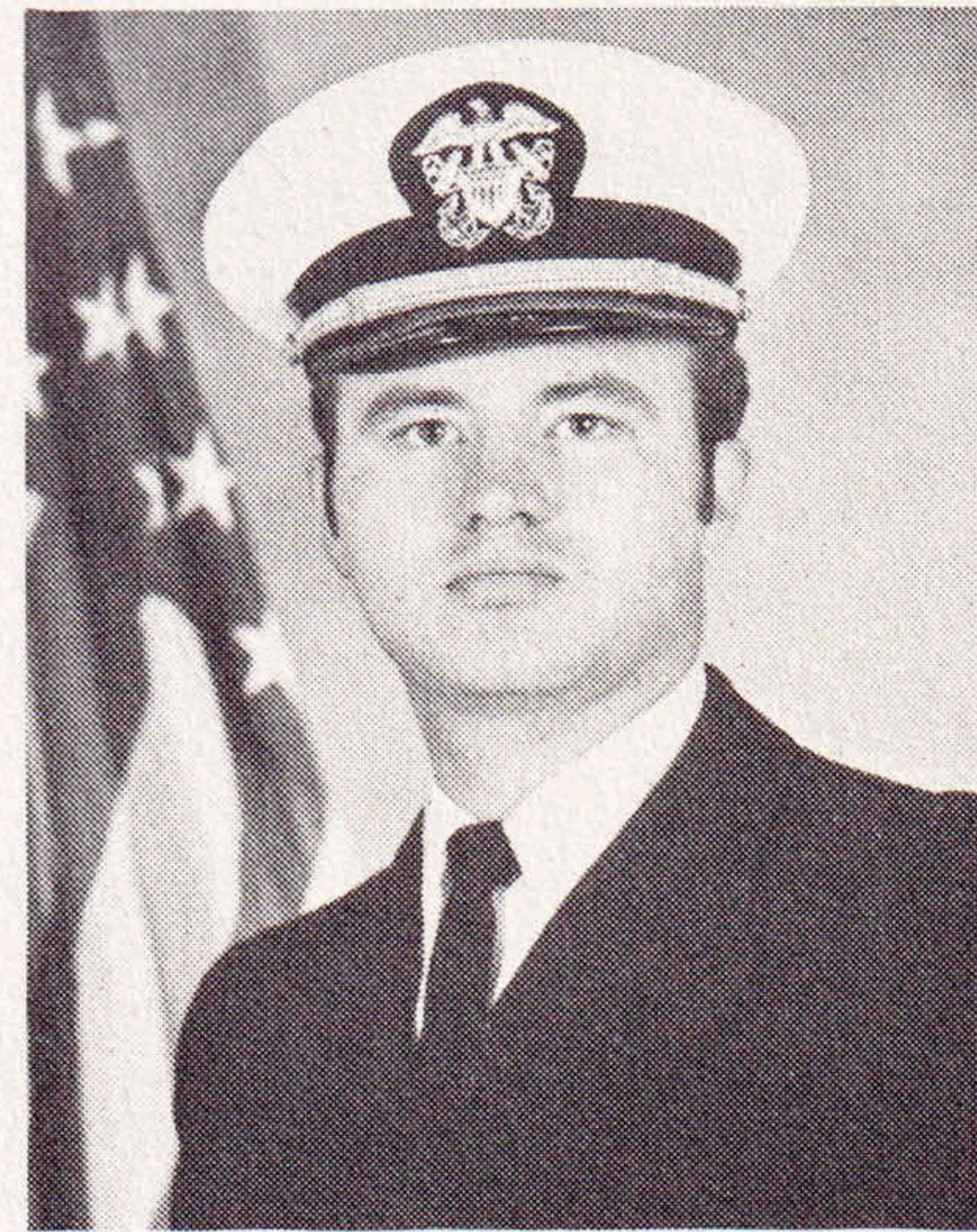
*Main Propulsion Assistant*  
**Charles W. Riley**  
Lieutenant, USN



*Damage Control Assistant*  
**Gerald E. Stephenson**  
Lieutenant, USN



*Reactor Control Officer*  
**Timothy M. Reichert**  
Lieutenant (JG), USN



*Electronics Material Officer*  
**Frederick J. Leach**  
Lieutenant (JG), USN





*Chief Of The Boat*  
RMCS(SS) D. H. Dyer, USN



TMCS(SS) E. J. Crowley



MMCS(SS) D. C. Stetson



MMCS(SS) W. E. Christesen



HMC(SS) C. P. Frye



STC(SS) D. W. Spence



QMC(SS) J. P. Jordan



ETC(SS) C. Westerveld



FTGC(SS) D. C. Lewis



ICC(SS) D. M. Hamilton





### EXECUTIVE AND SUPPLY DEPARTMENT PERSONNEL

**Front Row** — SN(SU) Hadden, YN1(SS) McAvaddy, YN2(SS) Kahle, TN(SS) Jose

**Second Row** — SK1(SS) Socha, CS2(SS) Mefford, SN(SU) Carrouthers, CSSN(SU) Roberts

**Not Shown** — CS1(SS) Howton, SD2(SS) Obrero, CSSA(SU) Martin, SKSA(SU) Gremore



### ENGINEERING DEPARTMENT PERSONNEL

**Front Row** — EN1(SS) Galvan, EM1(SS) Kelly, ETR2(SU) Moreira, MM1(SS) Sims, IC1(SS) Jordan, MM2(SU) Austin, MM3(SU) Fuhrman

**Second Row** — EM1(SS) Elnicki, EM2(SU) Schmidt, EM2(SS) Forgette, MM3(SS) DeBoer, ETR2(SU) Antonitis, IC1(SS) Flockerzi, MM2(SU) Sorkin

**Third Row** — MM1(SS) Nylin, IC2(SS) Mahaffey, MM1(SS) Grosse, MM2(SU) Hulbert, ET1(SS) Reilly, MM1(SS) Crampton, IC1(SS) Ortman, ET1(SS) Jester

**Not Shown** — MM1(SS) Crawford, MM1(SS) Dunphy, MM1(SS) Hollaway, MM1(SS) Titone, MM1(SS) Stout, EM1(SS) Hayes, EM1(SS) Pickworth, ET1(SS) Derr, ET1(SS) Langwell, MM2(SS) Kelley, MM2(SS) Chismark, MM2(SU) Harris, MM2(SU) Huseby, IC2(SS) Hall, IC2(SU) Reagan, IC2(SS) Youket, ETR2(SS) Strickland, ETN3(SU) Ray, MM3(SU) Steffenauer, IC3(SU) Lampe, EM3(SU) Wesley, MMFN(SU) Searl





### NAVIGATION AND OPERATIONS DEPARTMENT PERSONNEL

**Front Row** — RM3(SU) Rutter, ETR2(SS) Kurtz, ETR2(SU) Larson, QMSN(SU) Morgan

**Second Row** — QM1(SS) Draheim, RM1(SS) Sperling, ETN2(SS) O'Dell, QM2(SS) Pomerene

**Not Shown** — RM2(SU) Fox, ETR2(SS) MacKenzie, QM3(SS) Clabaugh, RM3(SU) Jacobs, ETN3(SU) Olson, ETR3(SU) Cannon



### WEAPONS DEPARTMENT PERSONNEL

**Front Row** — TM3(SS) Schwint, TM1(SS) Leonard, TM2(SS) Jaskiewicz, STS3(SU) Gordon, SN(SU) Johnson, SN(SU) Mauck, SN(SU) Pistey

**Second Row** — ST1(SS) Hoem, ST1(SS) Chellew, FTG2(SS) Mock, STS2(SS) Wadsworth, SN(SU) Weelborg, STS2(SS) Burgy

**Not Shown** — TM1(SS) Price, ST1(SS) Huber, STS2(SS) Martin, FTG2(SS) Yancey, STS3(SU) Lyles, FN(SU) Broderick, SN(SU) Brocchi, SN(SU) Hobbs, SA(SU) Green, FA(SU) Baum, FA(SU) Fetko, FA(SU) Rademacher



