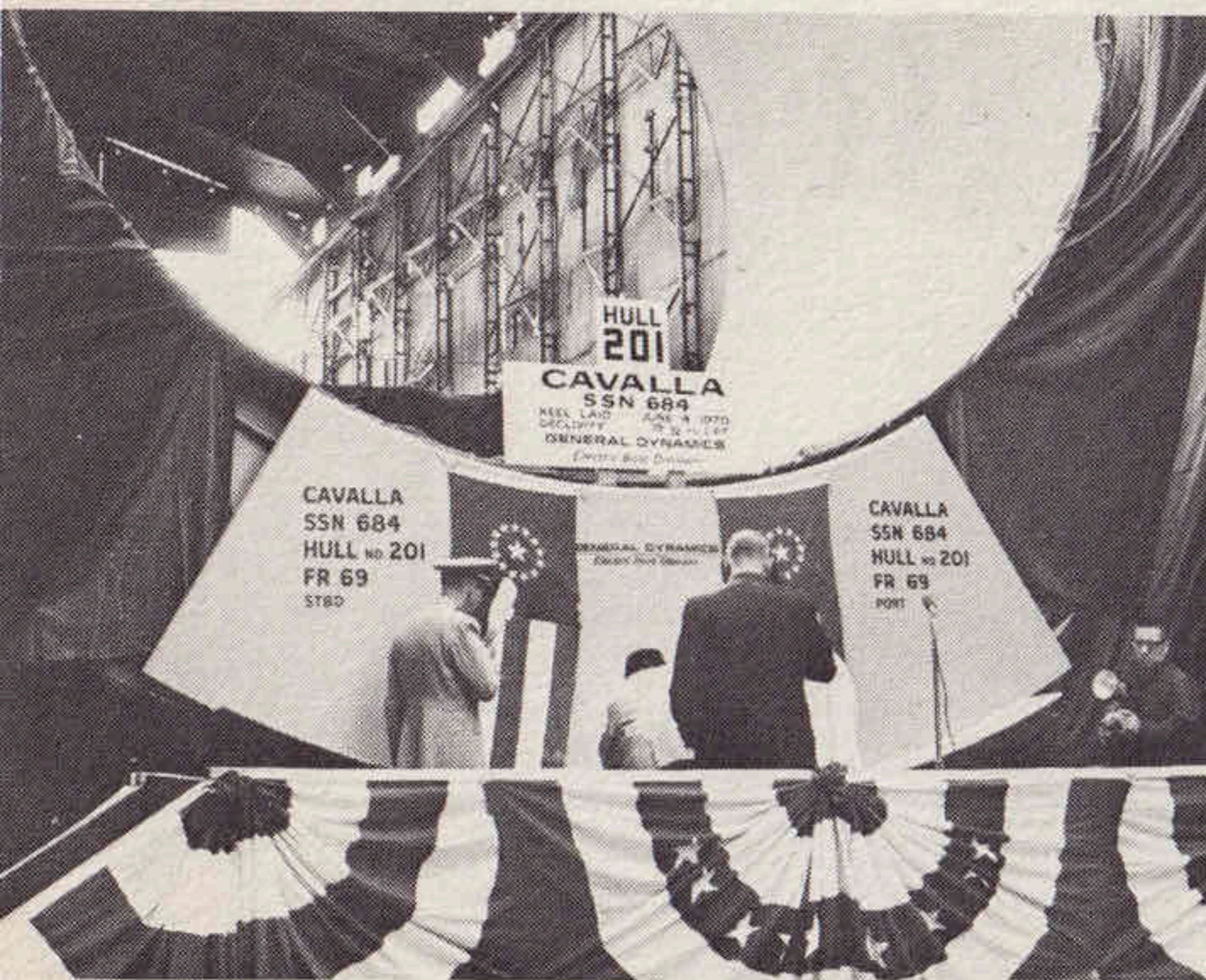
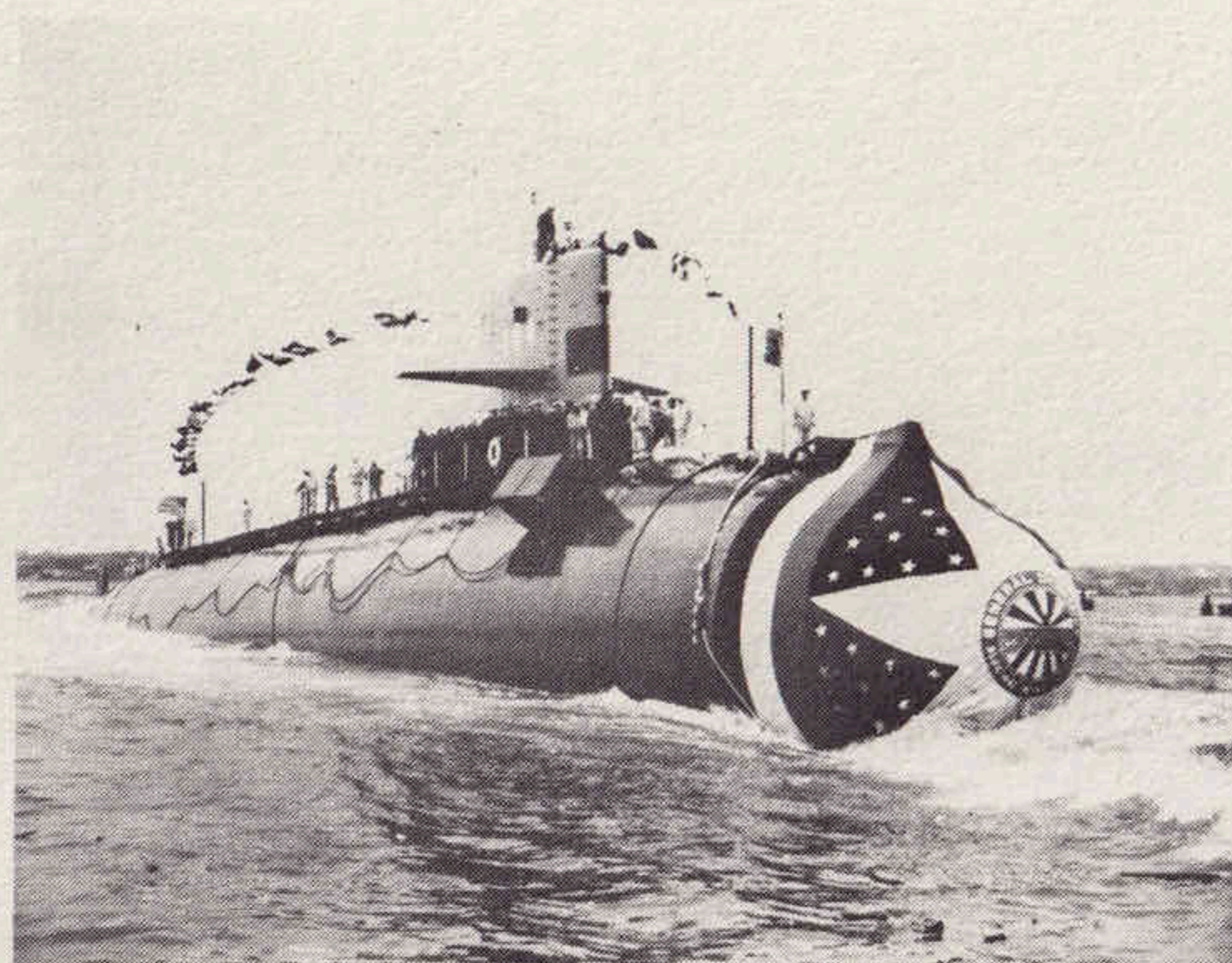


COMMISSIONING • FEBRUARY 9, 1973
USS CAVALLA SSN 684

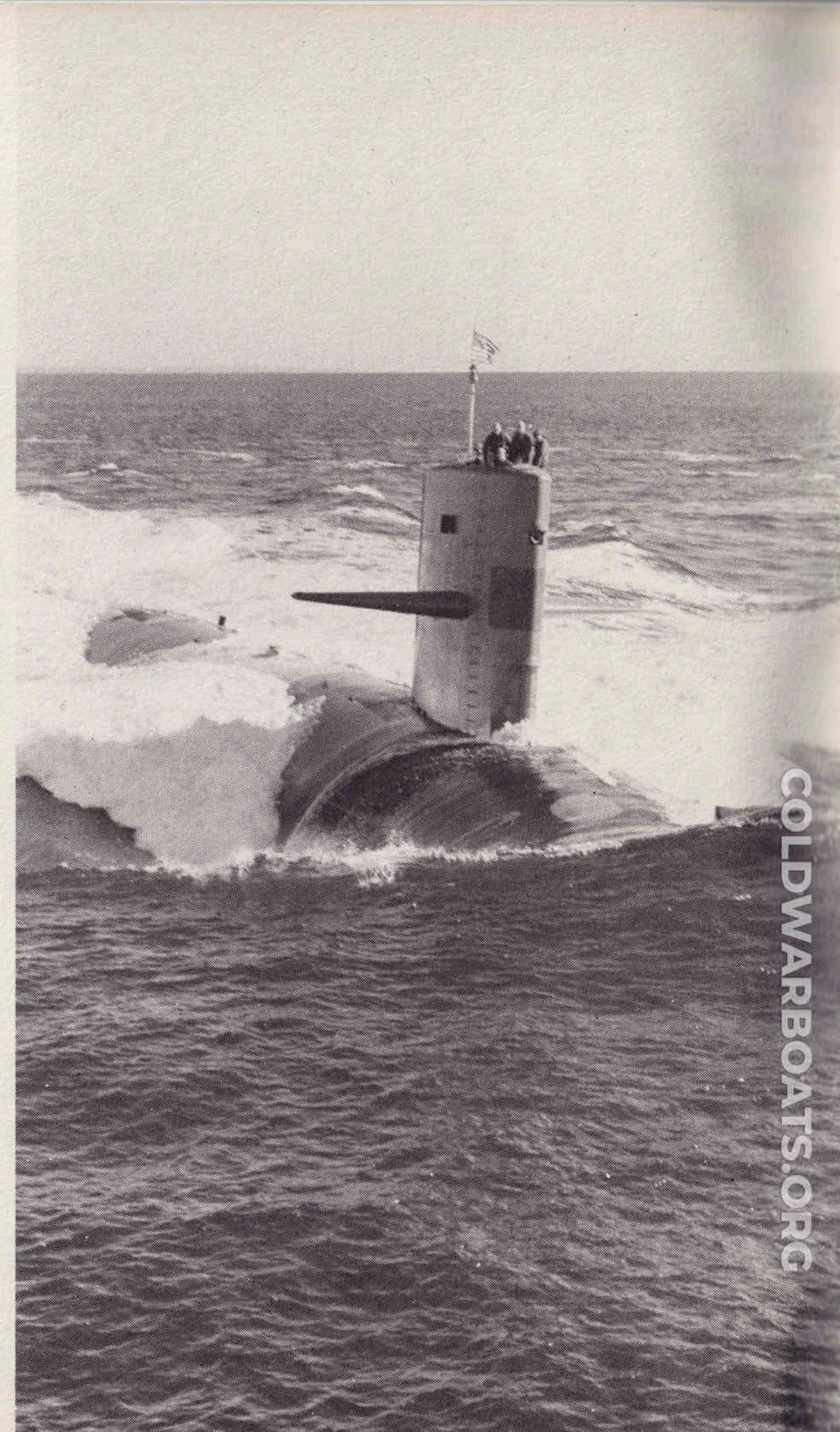


KEEL LAYING



LAUNCHING

AT SEA



USS CAVALLA SSN 684

COMMISSIONING



Built by

GENERAL DYNAMICS

Electric Boat Division

Eastern Point Road, Groton, Connecticut 06340

KEEL LAID

May 23, 1970

LAUNCHED

February 19, 1972

COMMISSIONED

February 9, 1973



Sponsor

Mrs. Melvin Price

COMMISSIONING OF A NAVY SHIP



The commissioning ceremony marks the entry of a ship into the operating forces of the United States Navy. With the breaking of the commissioning pennant, USS CAVALLA (SSN684) becomes an active member of the fleet and her Commanding Officer, together with his officers and men, is entrusted with the duty of making and keeping her ready to support our nation's commitments in peace or war.

The commissioning pennant is believed to have originated during the first Anglo-Dutch war in the 17th century. The story begins in 1652 when the Dutch Admiral, Maarten van Tromp, hoisted a broom to his masthead after his victory at Dungeness to symbolize his having swept the British fleet from the sea. The following year, when the British and Dutch fleets met again, the British Admiral William Blake answered this gesture by hoisting a horsewhip, indicating his intention to chastise the Dutch. The English were ultimately victorious and ever since, the long narrow pennant (symbolizing the original horsewhip) has been adopted by many nations as the distinctive mark of a man-of-war.



Ships Sponsor
MRS. MELVIN PRICE

Mrs. Price is a native of Moberly, Missouri. She attended Moberly Parochial School and Junior College and the University of California at Los Angeles. Following a business career, she became Field Director for the American Cancer Society in Colorado.

She married Representative Price in 1952. They have one son, William, a pre-med student at St. Louis University. Mrs Price is a certified Brailist and devotes considerable time to working with the blind, including conducting tours of the Capitol for blind visitors.



HERITAGE OF THE USS CAVALLA

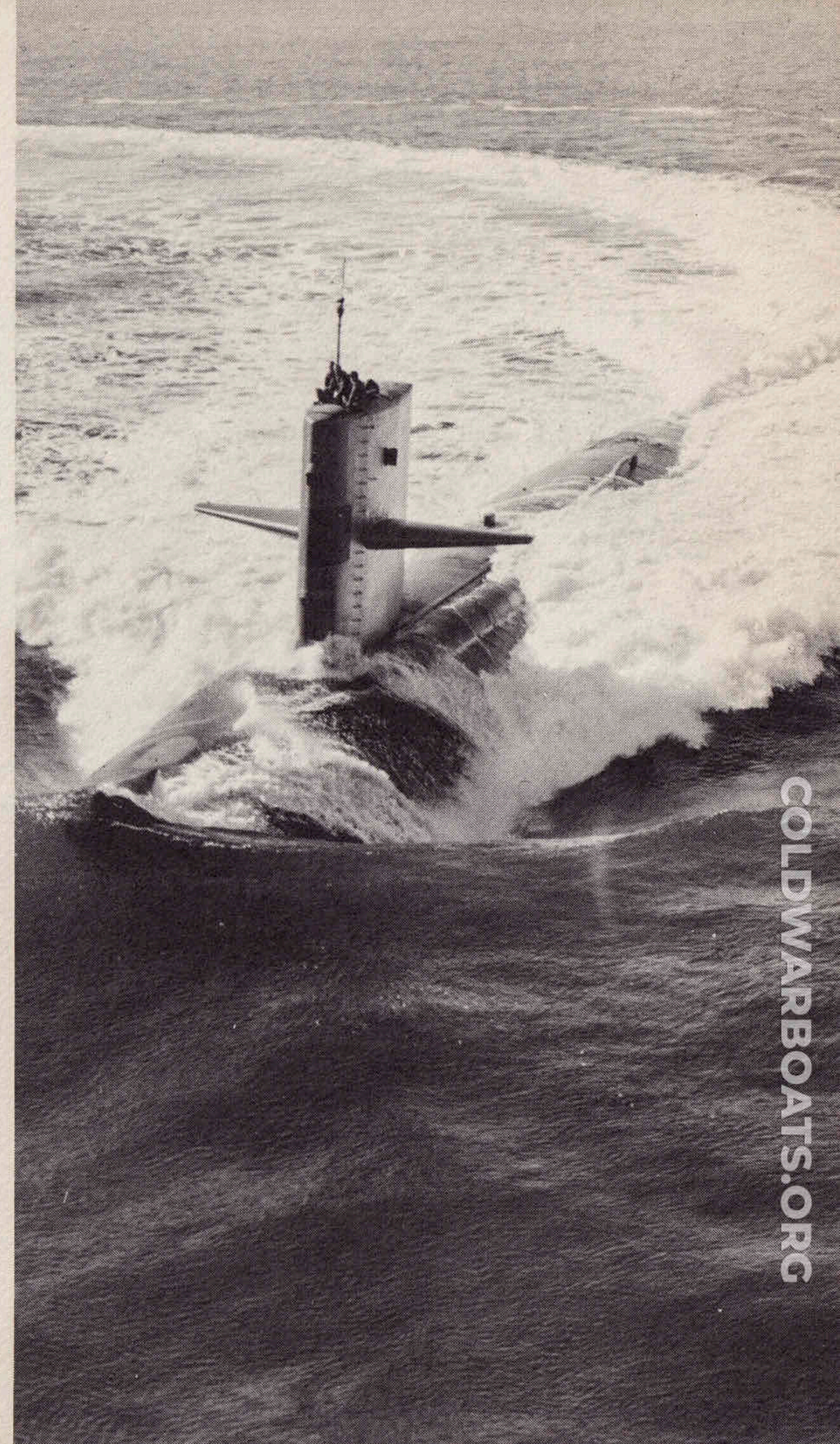
USS CAVALLA (SSN684) is namesake of the famed fleet submarine CAVALLA (SS244), which earned four battle stars and the Presidential Unit Citation for outstanding World War II combat operations.

The first CAVALLA'S keel was laid 4 March 1943 at Electric Boat Company, Groton, Conn. She was launched 14 November 1943 under sponsorship of Mrs. Merrill Comstock, and commissioned 29 February 1944 at the U.S. Naval Submarine Base in Groton. After readiness training she departed for combat in the Pacific.

CAVALLA left Pearl Harbor in May 1944 on her first of six war patrols. During her first patrol she was credited with sinking the 30,000-ton Japanese aircraft carrier SHOKAKU, for which she was awarded the Presidential Unit Citation. Moored alongside the submarine tender USS PROTEUS (AS19) in Tokyo Harbor, she witnessed the formal surrender of the Japanese Empire aboard the battleship MISSOURI (BB63).

In March 1946 CAVALLA was assigned to the reserve fleet, where she remained until recommissioned in April 1951. Decommissioned again during the period September 1952-September 1953, she was converted to a hunter-killer submarine as SSK244. In July 1963 CAVALLA was again reclassified as an auxiliary submarine (AGSS244), then finally decommissioned 3 June 1968. She served as a Naval Reserve Training submarine until struck from the Naval Register 30 December 1969.

On 15 September 1970, CAVALLA was accepted as a unit of the Texas Navy by the Texas Commander, U.S. Submarine Veterans of World War II. She is now at Seawolf Park on Pelican Island, near Galveston, Texas.





COMMANDER BRUCE DEMARS

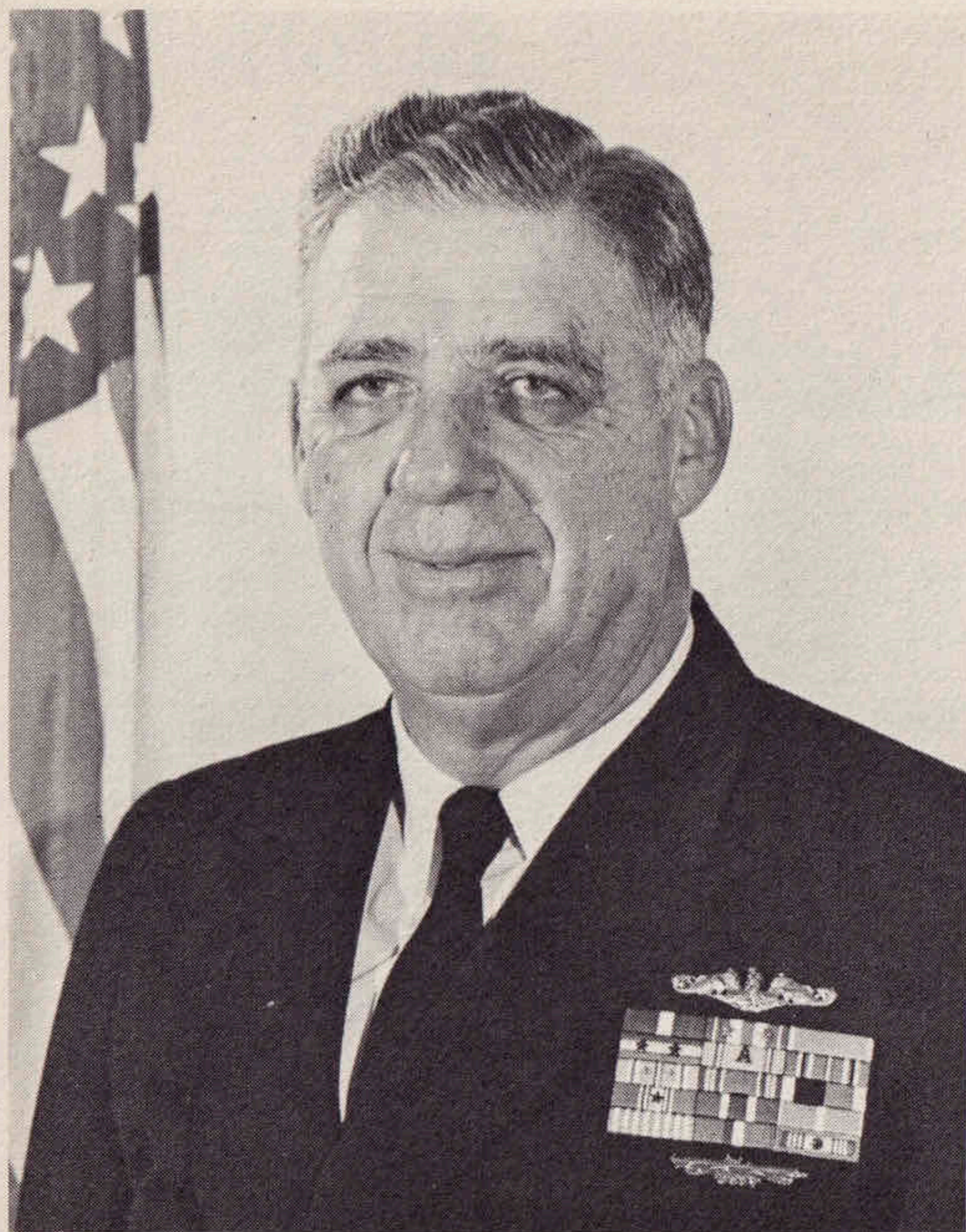
The Commanding Officer

Commander Bruce DeMars, Commanding Officer of the USS CAVALLA (SSN684), was born in Chicago, Illinois in 1935. He was appointed to the United States Naval Academy, Annapolis, Maryland as a Midshipman in 1953. He graduated from the Academy with the class of 1957 and received his commission as Ensign, U. S. Navy.

Commander DeMars served aboard the attack transport USS OKANOGAN before reporting to the Naval Submarine School in July 1958. After submarine training, Commander DeMars served in USS CAPITAIN (SS336) until April 1960 when he commenced nuclear power training. He reported in April 1961 to the USS GEORGE WASHINGTON (SSBN598) (BLUE).

In October 1962, Commander DeMars reported to the staff of the Nuclear Power School, Mare Island, California for duty as an instructor. From 1965 to 1967, Commander DeMars served aboard USS SNOOK (SSN592). In 1967 he attended the Armed Forces Staff College and from there was ordered to USS STURGEON (SSN637) where he served for two years as Executive Officer. From January 1970 to June 1971, Commander DeMars served as Director of the Operations Division at the Naval Submarine School. In December 1971, after completing Prospective Commanding Officer Training at the Division of Naval Reactors, Atomic Energy Commission in Washington, D. C. and at Headquarters Submarine Force Atlantic in Norfolk, Virginia, Commander DeMars assumed command of USS CAVALLA (SSN684) Precommissioning Unit at the Electric Boat Division of General Dynamics Corporation, Groton, Connecticut.

Commander DeMars is married to the former Margaret Ann Milburn of Chicago, Illinois. They have two children, Bruce and Margaret and reside in Mystic, Connecticut.



REAR ADMIRAL HERMAN J. KOSSLER
Principal Speaker

Rear Admiral Kossler, Commandant, Sixth Naval District, is currently serving his second tour in Charleston, having previously headed the U. S. Mine Force, Atlantic Fleet, from 1964 to 1966.

The admiral, who recently made Charleston his official home, entered the U. S. Naval Academy in 1930 as an appointee from Virginia. Graduating with the class of 1934, he was commissioned an ensign in 1934, then served in the battleship USS IDAHO before attending submarine school.

During World War II, Admiral Kossler served in submarines CAVALLA and GUARDFISH, winning the Navy Cross, three Silver Stars and two Presidential Unit Citations. For service as commanding officer of CAVALLA, which made six successful war patrols, he was awarded the Navy Cross.

Following World War II, he served in a variety of important billets, including that of Naval Aide to the Assistant Secretary of the Navy for Material and Assistant Chief of Naval Operations for Personnel. He also attended the National War College in Washington, D. C. Commands included the attack transport USS SANBORN, Submarine Squadron Two, Submarine Refit and Training Group, Amphibious Squadron Ten and a dual command as Commander, U. S. Naval Forces, Philippines, and Commander in Chief, Pacific Representative, Philippines.

For his duty in the Philippines from 1966 to 1968, he was awarded the Legion of Merit. In addition, the President of the Republic of the Philippines awarded him the Philippine Legion of Honor, the highest medal awarded to U. S. military by that country.

Admiral Kossler has been Commandant, Sixth Naval District, since July 1968.

COMMISSIONING

INVOCATION

Commander Steven N. Jones, CHC, USN

WELCOMING REMARKS AND INTRODUCTION OF BUILDER'S REPRESENTATIVE

Captain Patrick G. O'Keefe, USN, Supervisor of Shipbuilding, Conversion and Repair, Groton

REMARKS

Mr. Joseph D. Pierce
Vice President, General Dynamics
General Manager, Electric Boat Division

READING OF THE COMMISSIONING DIRECTIVE

COMMISSIONING AND ASSUMPTION OF COMMAND

Commander Bruce DeMars, USN

U.S. Naval Subm



NG PROGRAM

RENDERING OF HONORS

REMARKS BY THE COMMANDING OFFICER

Commander DeMars

REMARKS AND INTRODUCTION OF THE PRINCIPAL SPEAKER

Rear Admiral Paul J. Early, Commander Submarine Flotilla Two

ADDRESS

Rear Admiral Herman J. Kossler, Commandant Sixth Naval District

BENEDICTION

Commander Steven N. Jones, CHC, USN

HONORS AND DEPARTURE OF THE OFFICIAL PARTY

SIC

marine Base Band

COMMISSIONED OFFICERS



Executive Officer
LCDR James H. Patton Jr



Navigator
LCDR James R. Carey



Engineer
LCDR James G. Burke



Weapons Officer
LT Peter A. Nann



*Damage Control
Assistant*
LT Kenneth L. Nichols



Supply Officer
CW02 Rodney O. Rehfeld



*Main Propulsion
Assistant*
LT William T. Shenton



Electrical Officer
LT Gordon R. Sloat



Communicator
LT Norman L. Back



Sonar Officer
LTJG Robert B. Thompson



*Reactor Control
Officer*
LTJG Curtis D. Clayton

CHIEF PETTY OFFICERS



Chief of the Boat
ETCS(SS)
George F. Gillespie



HMCS(SS)
Alden K. Bugbee



MMCS(SS)
Edward J. DuBois Jr



YNCS(SS)
Richard E. Weiner



MMCS(SS)
David S. Morrill



QMC(SS)
Floyd W. Honeysette



FTGC(SS)
Herschel V. McClary



EMC(SS)
Robert E. Rike



RMC(SS)
Jerry D. Jensen



STC(SS)
Larry E. Teeter



TMC(SS)
David H. Padgett



MMC(SS)
William E. DeMark



AUXILIARY & INTERIOR COMMUNICATIONS DIVISIONS

- First Row:** IC1(SS) Clarence A. Davis, MM1(SS) Anastacio P. Amposta, MMFN(SU) Henry L. Heikkila, MM3(SU) John C. Thoelecke
- Second Row:** IC3(SS) John R. Thomas, IC1(SS) Leslie E. Andrus, MM1(SS) Alex S. Mootry, MM1(SS) Denver A. Rice, MM3(SU) James M. Seawright
- Third Row:** MMFN(SU) Robert L. Warren, FN(SU) Curtis J. Schexnayder, MM3(SU) Edward J. Hastie



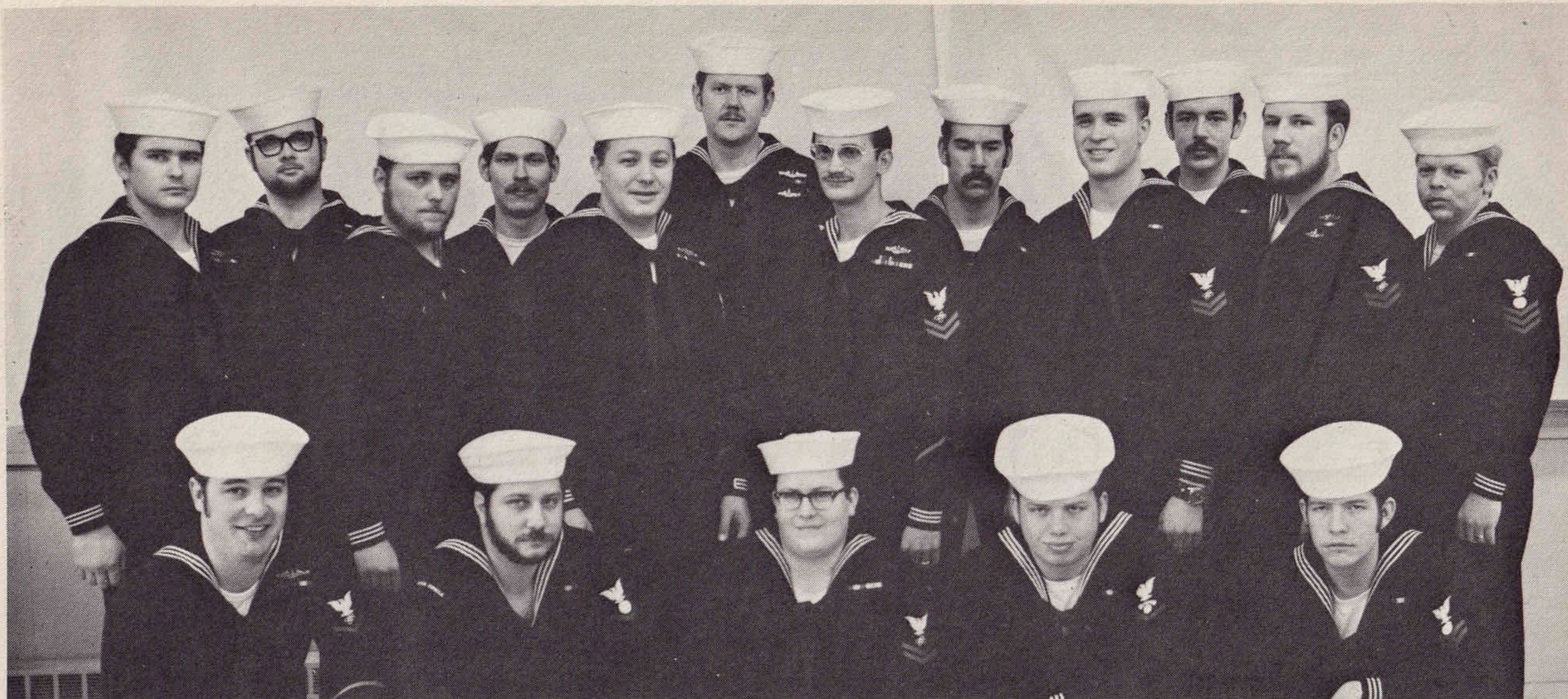
WEAPONS DEPARTMENT

First Row: SN(SU) Emmett J. Orr, TM3(SU) John E. Holden, SA(SU) Larry A. Glavin, SN(SU) Clerance D. Earlywine

Second Row: TM1(SS) Walter E. Thomas III, FTG2(SS) Gary A. Hayek, TM2(SS) Charles R. Schmidt, SN(SU) Daniel E. Green, TM1(SS) Richard A. Hunt

Third Row: MMFN(SU) Thomas G. Boerman, TMSN(SU) Renard F. Spagnoli, MMFN(SU) Philip R. Mundy, TMSN(SU) David M. Meitzler, MMFN(SU) Lawrence R. McClorey, MMFN(SU) John H. Puha

Not Shown: FTG1(SS) Michael D. Sweny, TM3(SS) Robert C. Turner



ELECTRICAL & REACTOR CONTROL DIVISIONS

- First Row:** ETR2(SS) Dennis K. Marker, EM3(SU) George R. Morris, ETR2(SU) Andrew J. Shea, IC3(SU) Henry E. Watson, EM2(SU) Gary A. Mercer
- Second Row:** EM1(SS) Ivenhoe T. Richey II, EM2(SU) Terry W. Bingham, IC1(SS) Floyd T. Underkoffler, ETR2(SS) Ralph R. Frish, ETN2(SU) Harry B. Smits III, ETR2(SS) Charles J. Hagerman Jr, EM1(SU) Paul W. Imbach
- Third Row:** EM1(SS) Grady A. Tait, EM1(SS) David L. Kiessling, ET1(SS) Edward W. Pailles, EM3(SU) Peter D. Houdlette, ETN2(SU) Douglass M. Ray
- Not Shown:** ET1(SS) Garry A. Dietz, EM2(SU) Byon K. Norris



OPERATIONS & NAVIGATION DEPARTMENTS

- First Row:** ETR2(SS) Michael R. Henry, RM3(SU) Stephen E. Barr, STS2(SU) Allan R. Zimmerman, ST1(SS) Victor L. Maskey, ST1(SS) Grant N. Townsend Jr., ST1(SS) Richard A. Dennis
- Second Row:** QM3(SU) David A. Stephan, QMSN(SU) Charles R. Close, QM1(SS) Anthony G. Duran, ETN2(SS) William D. Wayman, ET1(SS) Robert J. Manson, STS3(SU) Francis P. Poist, SN(SU) Tommie L. Stanton
- Third Row:** STS2(SS) Michael A. Toombs, RM1(SS) Richard G. Uttley, STS3(SU) Stephan J. Williams, RM2(SU) Michael J. Keesling
- Not Shown:** ETR3(SU) Wayman W. Abercrombie, STS3(SU) Ernest O. Hancock, STS3(SU) Chandler C. Jackson, SN(SU) David A. Lollar, ET1(SS) Richard D. Sheptack, RM3(SS) Ronnie L. Standridge, QM2(SU) Jerry A. Williams



SUPPLY & ADMINISTRATIVE DEPARTMENTS

First Row: SD3(SS) Alfredo A. Bernabe, TA(SU) David Kish, SD3(SS) Virgilio Y. Manosca

Second Row: CS1(SS) James R. Anthony, YN3(SS) Kenneth L. Krzycki, SKSN(SU) Randall C. Barcalow,
SK2(SS) Gustav H. Kraus, CS2(SS) David A. Stack, TN(SU) Robert H. Boudrero Jr.

Not Shown: CSSA(SU) Stuart S. Rider



MACHINERY DIVISION

- First Row:** MM2(SU) Terrance E. Wright, MM1(SS) Everett A. Blauvelt Jr., MM1(SS) James W. Crowley, MM2(SU) Gregory V. Merrell, MM1(SS) Gregory A. Dumas, MM2(SS) Stephen C. Tanner
- Second Row:** MM1(SS) John J. Leason, MM1(SS) Thomas J. Vacha, MM2(SU) Craig A. Fortney, MM1(SU) Charles A. Jones, MM2(SS) Herman C. Weber Jr, MM3(SU) Terry D. Brabenec
- Not Shown:** MM1(SS) Richard W. Oswald, MM2(SS) James E. Snyder

