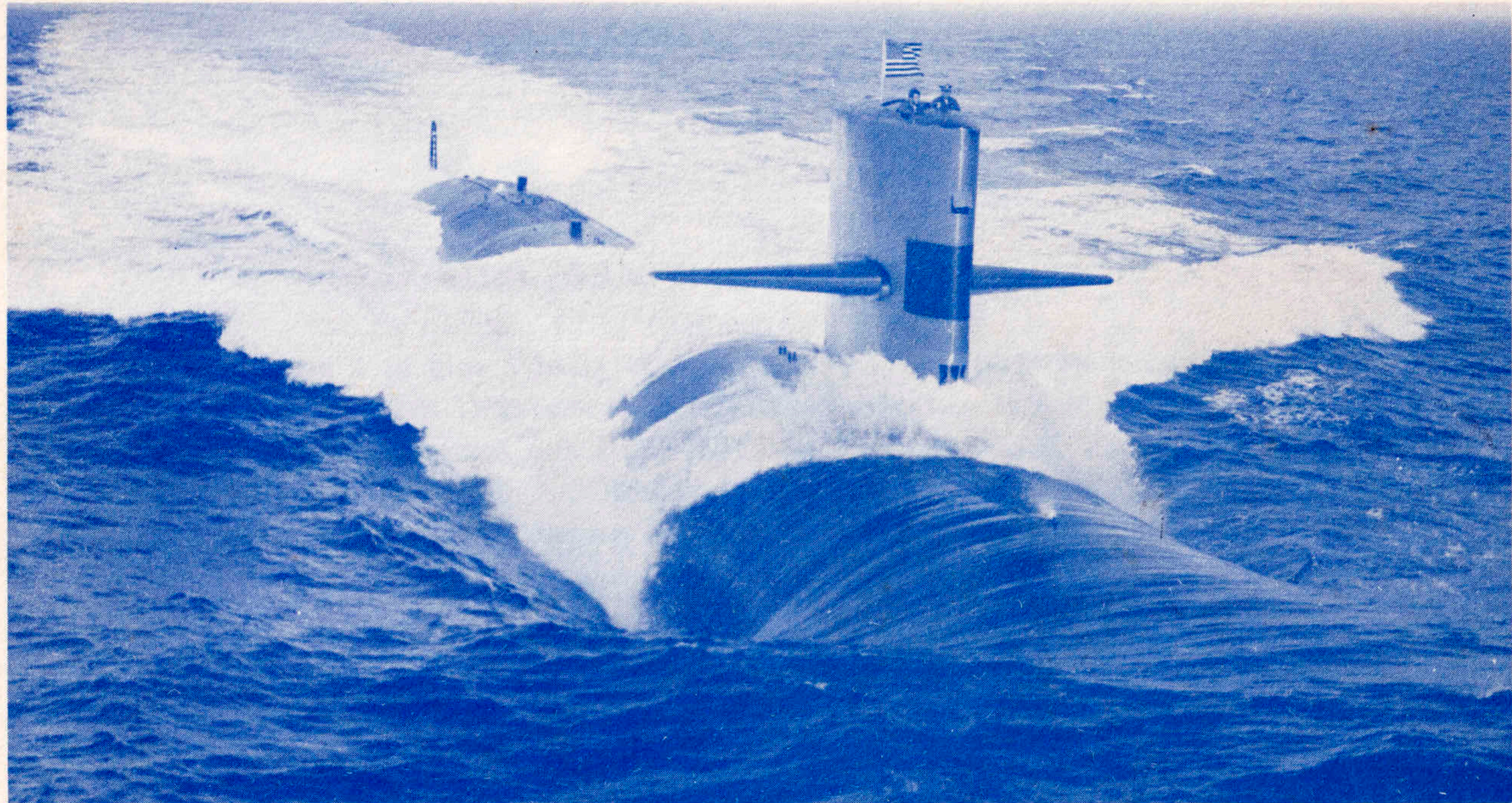
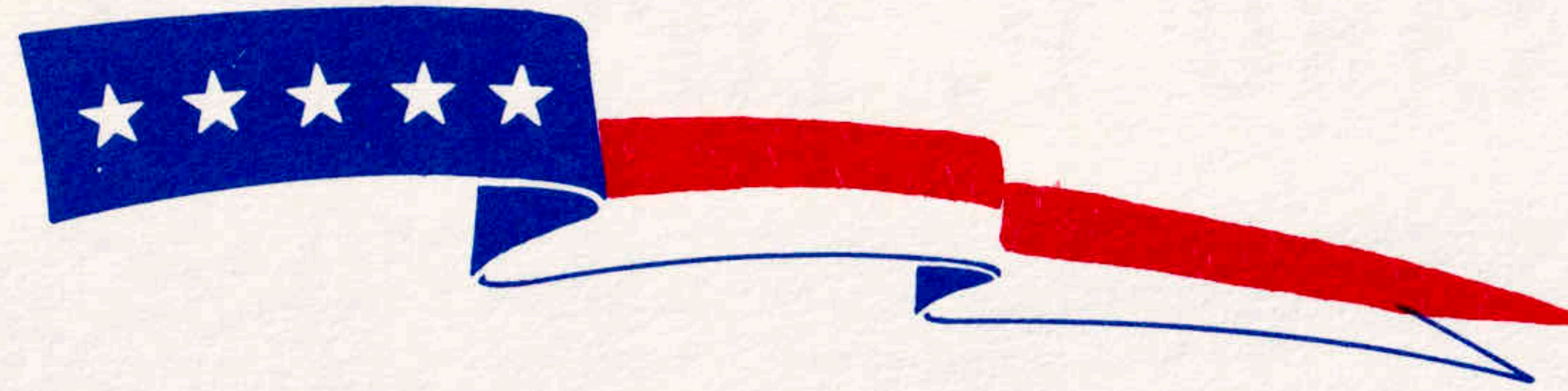


# **USS GLENARD P. LIPSCOMB (SSN 685)**



**COMMISSIONING, 21 DECEMBER 1974**





## COMMISSIONING OF A NAVY SHIP

The commissioning ceremony marks the acceptance of a ship as a member of the operating forces of the United States Navy. At the moment of breaking the commissioning pennant, USS GLENARD P. LIPSCOMB (SSN 685) becomes an active member of the fleet. The Commanding Officer, together with the ship's officers and men, has the duty of making and keeping her ready for any commitment required by our nation in peace or war.

The commissioning pennant is the historic symbol of a man of war. It is believed to date from the 17th century when the Dutch Admiral Maarten Van Tromp hoisted a broom at his masthead to symbolize his having swept the British from the sea at Dungeness. The following year British Admiral William Blake hoisted a horse whip to his masthead, indicating his intention to chastise the Dutch. The victorious British thus set a precedent of a long narrow commissioning pennant, symbolizing the original horse whip as the distinctive mark of a ship of war.



**USS GLENARD P. LIPSCOMB (SSN 685)**

**COMMISSIONING**



*Built by*

**GENERAL DYNAMICS  
ELECTRIC BOAT DIVISION  
GROTON, CONNECTICUT**

**KEEL LAID**

**5 June 1971**

**LAUNCHED**

**4 August 1973**

**COMMISSIONED**

**21 December 1974**



*Sponsor*

**Mrs. Virginia Lipscomb**





**ROBERT T. HARTMANN**  
**COUNSELLOR TO THE PRESIDENT**

Robert Trowbridge Hartmann was born in South Dakota, raised in New York and California, graduated from Stanford University in 1938 and since 1954 has been a resident of Maryland.

During World War II he served in the Pacific on the staffs of Fleet Admiral Nimitz and Admiral Halsey, rising from the grade of Ensign to LCDR, USNR. He retired in 1973 with the rank of Captain.

After the war he returned to the staff of the Los Angeles Times as a reporter and in 1948 became its youngest editorial writer. In 1954, when his close friendship with then freshman Congressman Lipscomb began, Mr. Hartmann was named Chief of the Los Angeles Times' Washington Bureau.

In 1963 and 1964 he established and headed his paper's Mediterranean and Middle East Bureau based in Rome, Italy. Returning to Washington, he joined the professional staff of the Republican Conference of the U.S. House of Representatives a year after Rep. Gerald R. Ford (R-Mich.) was elected Minority Leader, and was elected Minority Sgt-at-Arms of the House for the 91st, 92nd and 93rd Congresses. Concurrently, he served as Mr. Ford's Legislative Assistant.

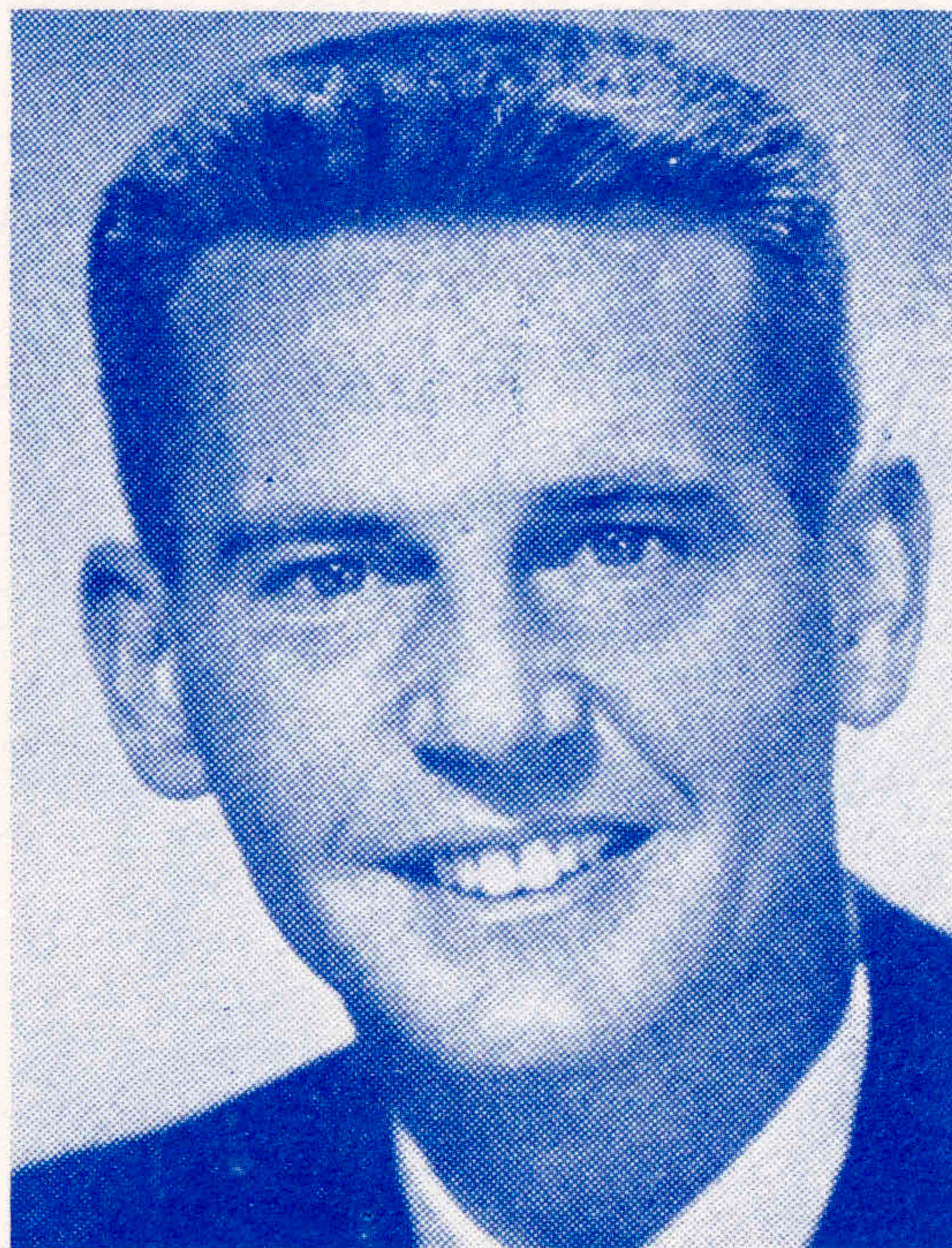
During his career on Capitol Hill, Mr. Hartmann served as Assistant to the Permanent Chairman (Rep. Ford) of the 1968 and 1972 Republican National Conventions and was a staff member of the first House of Representatives mission to the Peoples Republic of China in 1972.

When Rep. Ford became Vice President of the U.S. on December 6, 1973, he named Mr. Hartmann his chief of staff. The first appointment made by President Ford upon assuming office August 9, 1974, was to designate his longtime assistant as Counsellor to the President with Cabinet rank. His primary responsibilities are in the area of politics and Presidential statements and speeches.

Mr. Hartmann is a member of the Navy League, International Club of Washington, National Press Club and Sigma Delta Chi.

He married the former Roberta Sankey on January 17, 1943. They have two children and two grandchildren.





**THE HONORABLE  
GLENARD P. LIPSCOMB**

The ship is named for the Honorable Glenard P. Lipscomb, who served as Congressman from the 24th District of California from 1953 until his death on February 1, 1970.

Nine consecutive terms in the House starting in 1953 speak eloquently of his success. From 1958 he served on the powerful House Appropriations Committee. He was ranking Republican member of its defense subcommittee handling appropriations for the Departments of State, Justice, Commerce, the Federal Judiciary and related agencies. In addition, he was the ranking minority member of the Committee on House Administration. He was a member of the Joint Senate-House Committee on Printing. From 1959 to 1970 he was the chairman of the California Republic Delegation in Congress. Congressman Lipscomb was a longtime proponent of naval nuclear power.

Congressman Lipscomb is survived by his wife, Virginia, and two daughters, Diane Lipscomb Grasso and Joyce Lipscomb Murrell.





**MRS. VIRGINIA LIPSCOMB**

**Sponsor**

Mrs. Virginia Lipscomb was born in Binghamton, New York, but moved to California as a child. She attended Belmont High School in Los Angeles where she met her husband. She devoted much of her adult life to being his partner and helpmate.

Mrs. Lipscomb, like many Congressional wives, campaigned actively with her husband and remained close to his Congressional activities. In addition, she has devoted considerable time to Red Cross work and to the Florence Critterdon Home in Washington, D. C. During Mr. Lipscomb's Congressional service she was an active member of the Congressional Club and served as its Vice President.

Mrs. Lipscomb christened the submarine bearing the name of her husband at the launching ceremony on 16 August 1973 at Electric Boat Company.





**COMMANDER JAMES F. CALDWELL, USN  
COMMANDING OFFICER  
USS GLENARD P. LIPSCOMB (SSN 685)**

Commander James F. CALDWELL, son of Captain and Mrs. Rex S. CALDWELL of Annapolis, Maryland, was graduated from the U. S. Naval Academy, Annapolis, Maryland, with the class of 1958. After graduation, Commander CALDWELL reported to USS PORTERFIELD (DD 682), homeported in San Diego, California where he served in the Gunnery Department for almost two years as First Lieutenant. In April of 1960 he reported to the Naval Submarine School in Groton, Connecticut.

Following graduation from Submarine School, Commander CALDWELL commenced nuclear power training at the Nuclear Power School, New London, followed by prototype training at the U. S. Naval Nuclear Power Training Unit, West Milton, New York. In November 1961, Commander CALDWELL was ordered to USS ABRAHAM LINCOLN (SSBN 602) GOLD Crew where he served for three years.

Following his tour in ABRAHAM LINCOLN, he reported as Engineer Officer, USS SWORDFISH (SSN 579) homeported in Pearl Harbor, Hawaii, where he served for three and one-half years before being ordered to duty as an instructor at Naval Submarine School. He was attached to SWORDFISH when that submarine was awarded the Navy Unit Commendation in 1965. After a two year tour of duty at Submarine School, Commander CALDWELL reported to USS PINTADO (SSN 672) undergoing construction at Mare Island Naval Shipyard, Vallejo California as Prospective Executive Officer. He served as the Executive Officer of PINTADO for almost three years before reporting to New London as Prospective Commanding Officer, USS GLENARD P. LIPSCOMB.

Commander CALDWELL is married to the former Peggy Anderson of Annapolis, Maryland. Commander and Mrs. CALDWELL, with their three sons and one daughter, reside in Gales Ferry, Connecticut.



## COMMISSIONED OFFICERS



*Executive Officer*  
LCDR J. C. DOBES



*Navigator*  
LCDR J. S. Baumstark



*Engineer Officer*  
LT T. G. Broughton

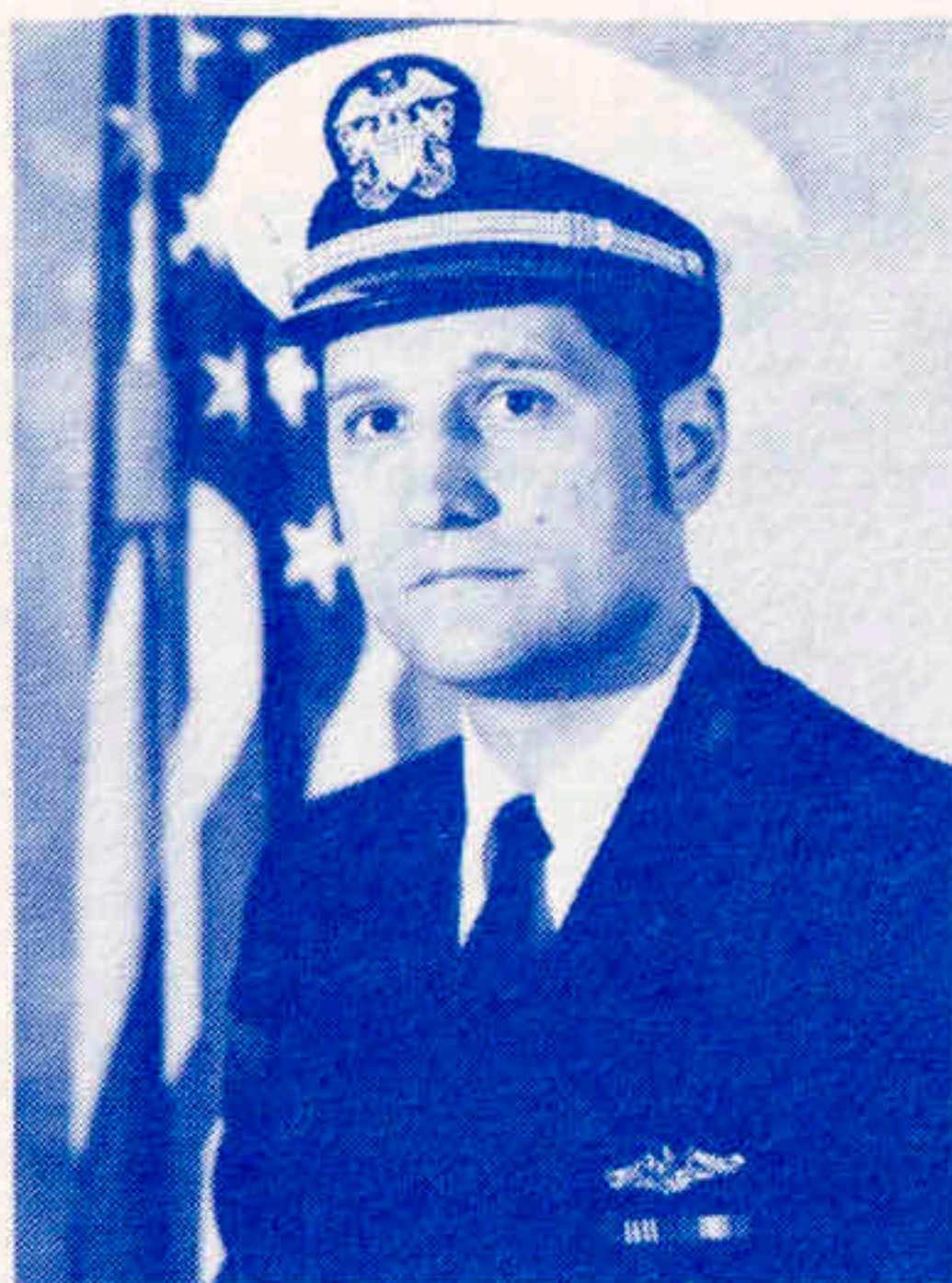


*Weapons Officer*  
LT R. Kuginskie



*Damage Control Assistant*  
LT W. W. Schmidt





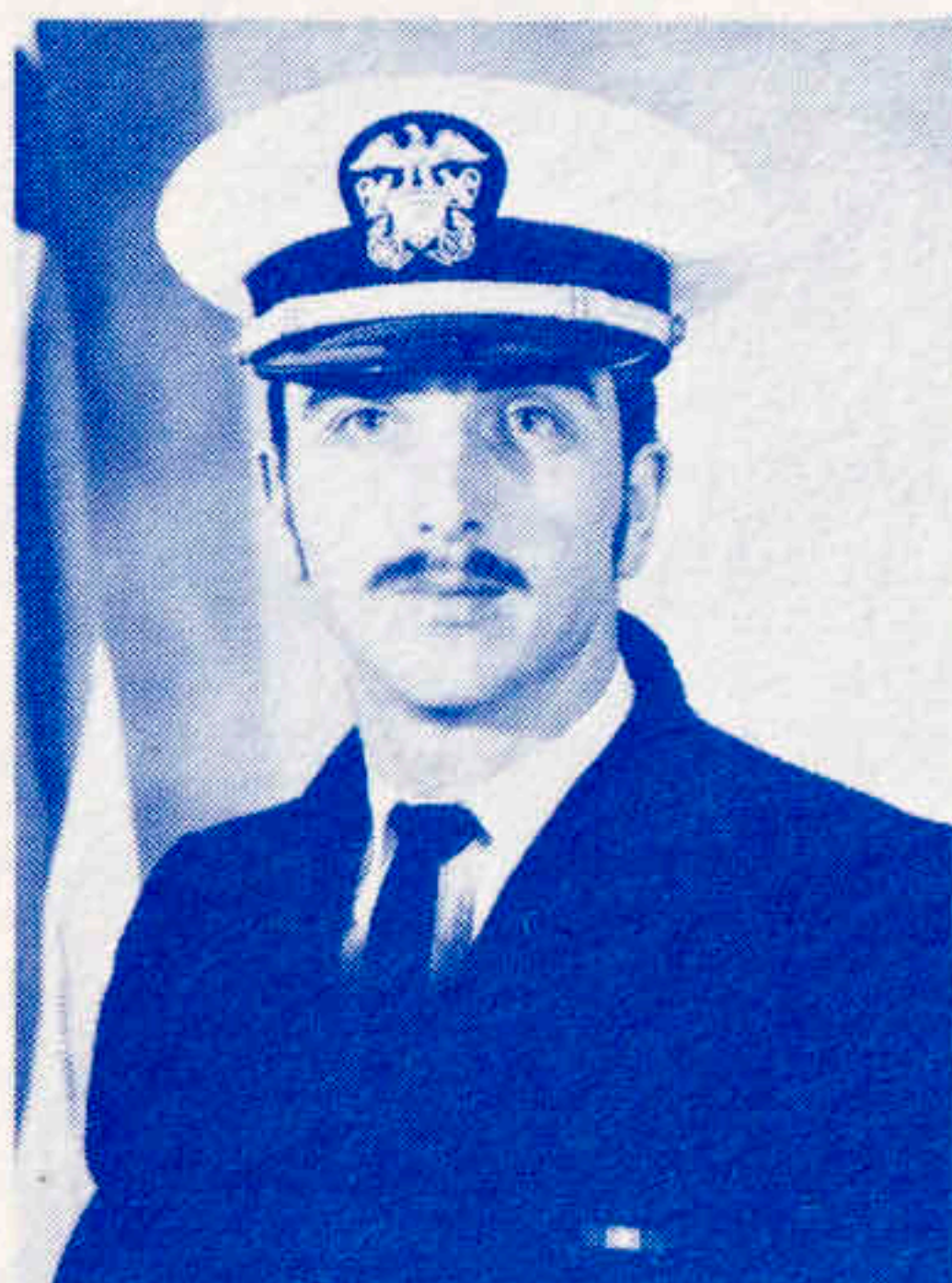
*Sonar Officer*  
LT J. T. Lario



*Main Propulsion Assistant*  
LT J. D. Robinson



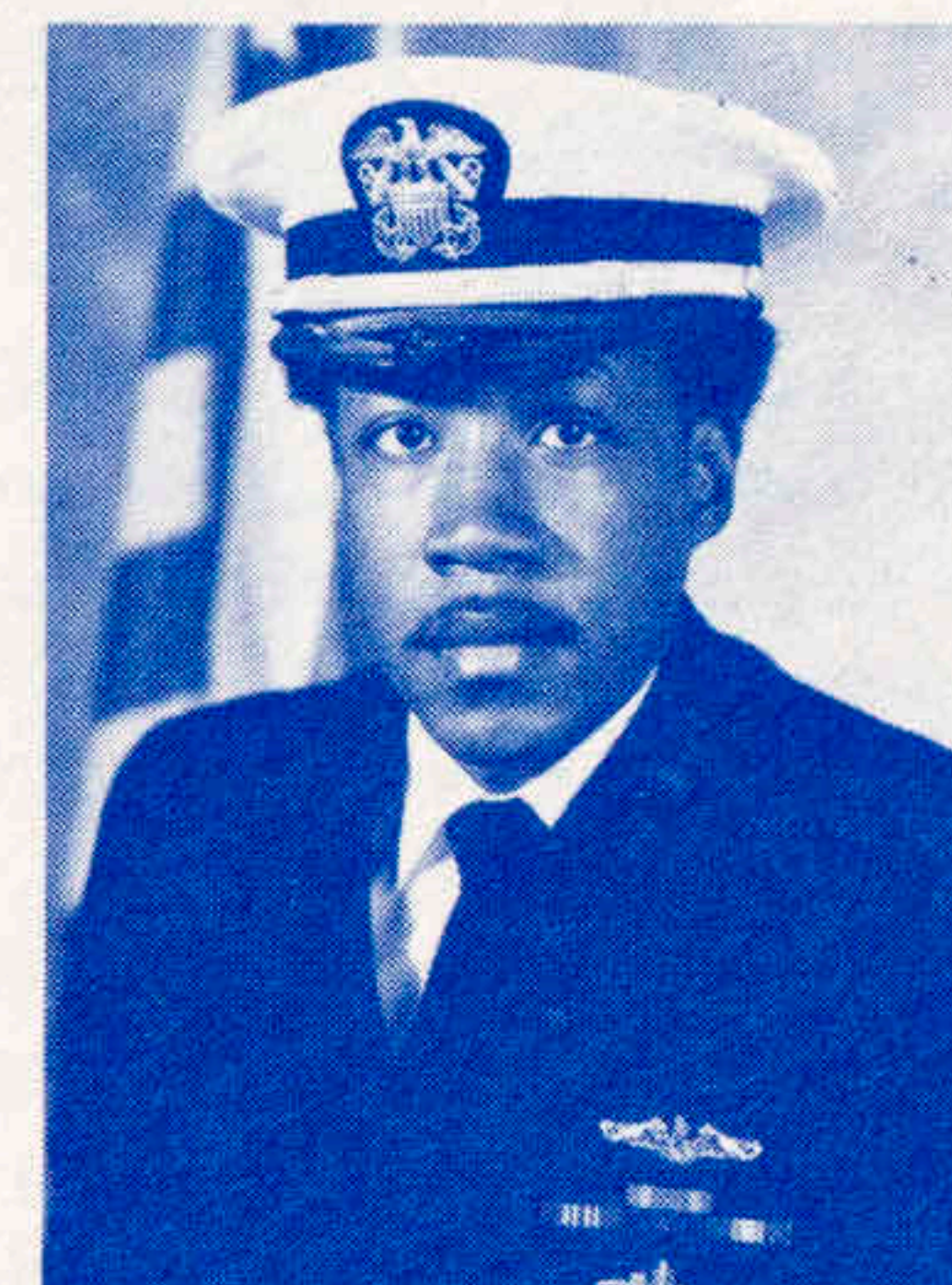
*Communicator*  
LT B. G. Kline



*Reactor Controls Officer*  
LT(jg) A. G. Johnson



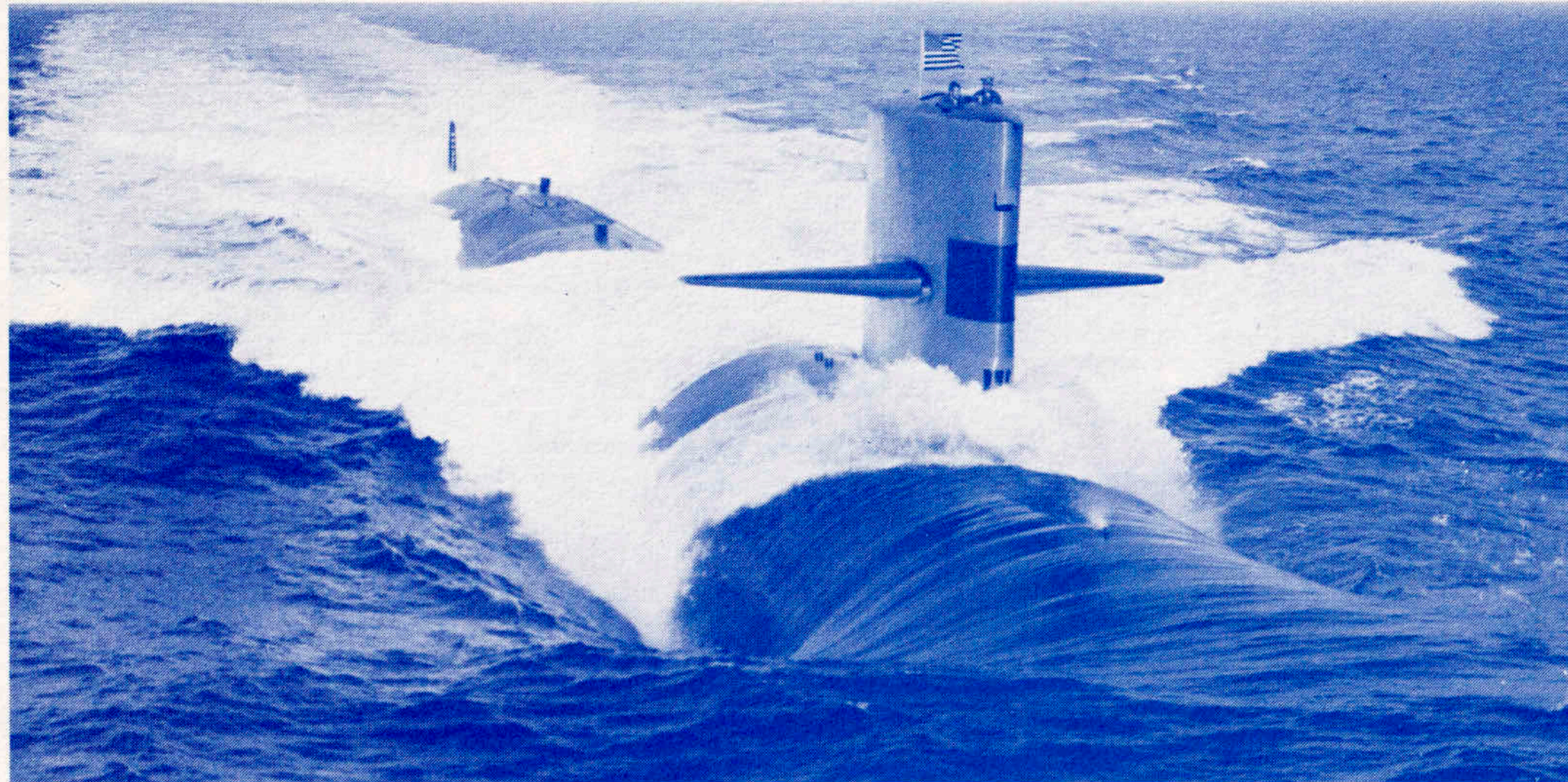
*Electrical Officer*  
LT(jg) T. S. Kennedy



*Supply Officer*  
LT(jg) W. E. Woods



# UNITED STATES SHIP GLENARD P. LIPSCOMB (SSN 685)



As are all nuclear powered submarines, GLENARD P. LIPSCOMB is capable of operating independently of the earth's atmosphere for long periods of time. This characteristic is a result of power generation by a pressurized water reactor and associated steam plant which requires no oxygen supply or atmospheric exhaust. The power generated by the reactor provides propulsion and drives auxiliary turbine generators which provide the ship with all necessary light and electrical power. To support human life in this enclosed environment, the ship is completely air-conditioned and the atmosphere is highly controlled to prevent buildup of any toxic substances hazardous to life or equipment.

GLENARD P. LIPSCOMB (SSN 685) is in a single ship class, 365 feet long with a beam of 31 feet and a displacement of 6400 tons submerged. Her mission is to seek out and destroy enemy ships. To accomplish this mission GLENARD P. LIPSCOMB has highly advanced detection and weapons control systems. Combined with long-range torpedoes and the SUBROC missile, these systems permit detection and destruction of enemy ships and submarines at great distances.





*Chief of the Boat*  
ETCM(SS) D. M. QUIGLEY

## ROSTER OF CHIEF PETTY OFFICERS



EMCS(SS) F. B. TAPLEY, USN  
STCS(SS) C. G. WARD, USN  
HMCS(SS) B. D. REPPHUN, USN  
ETCS(SS) W. R. SALEN, USN  
MMCS(SS) H. FERRARO, USN  
QMC(SS) M. W. PERRY, USN  
ICC(SS) S. G. BLAIR, USN  
YNC(SS) J. ROBERTS, USN  
RMC(SS) W. D. BRATCHER, USN  
ENC(SS) G. A. McRORIE, USN  
TMC(SS) W. G. MILLER, USN  
MMC(SS) H. K. KRAUSE, USN  
MMC(SS) W. H. WOOD, USN  
EMC(SS) A. J. ELNICKI, USN  
MMC(SS) D. W. SMITH, USN  
MMC(SS) L. T. SMITH, USN  
SKC(SS) W. R. BONNETT, USN  
RMC(SS) G. E. McCARTY, USN  
TMC(SS) K. M. PRENDERGAST, USN  
FTGC(SS) A. R. ISHIHARA, USN





# COMMISSIONING

ARRIVAL OF OFFICIAL PARTY

INVOCATION  
BY REVEREND GALE R. WILLIAMSON,  
PASTOR OF UNITED METHODIST CHURCH, GALES FERRY

COMMISSIONING AND ASSUMPTION OF COMMAND  
BY COMMANDER JAMES F. CALDWELL, USN

REMARKS BY THE COMMANDING OFFICER

REMARKS  
BY ADMIRAL H. G. RICKOVER, USN  
AND INTRODUCTION OF THE SECRETARY OF THE NAVY





# NG PROGRAM

## REMARKS

BY THE SECRETARY OF THE NAVY,  
THE HONORABLE J. WILLIAM MIDDENDORF II,  
AND INTRODUCTION OF THE PRINCIPAL SPEAKER

## ADDRESS BY

THE HONORABLE ROBERT T. HARTMANN,  
COUNSELOR TO THE PRESIDENT

## DEPARTURE OF OFFICIAL PARTY

## MUSIC BY

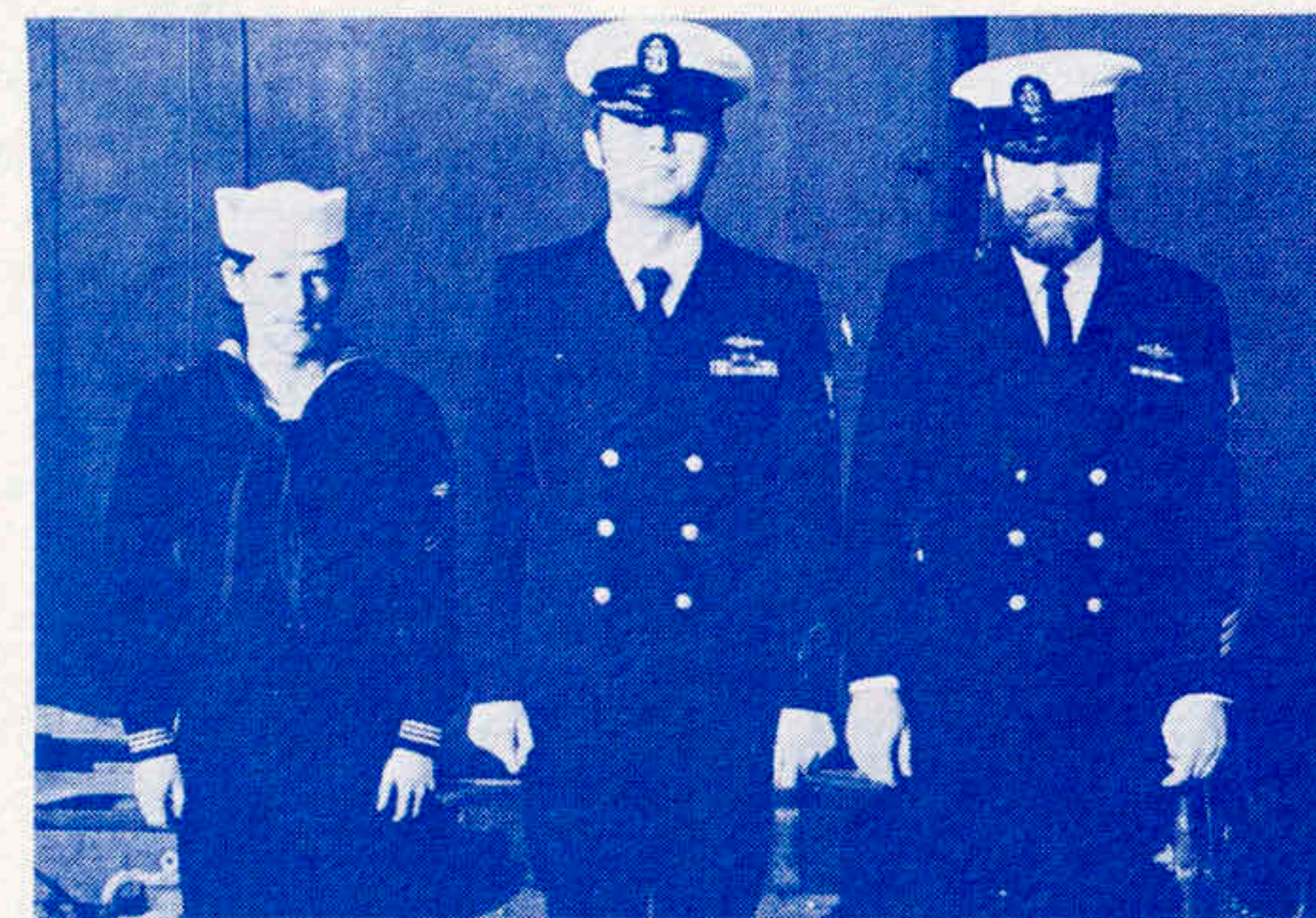
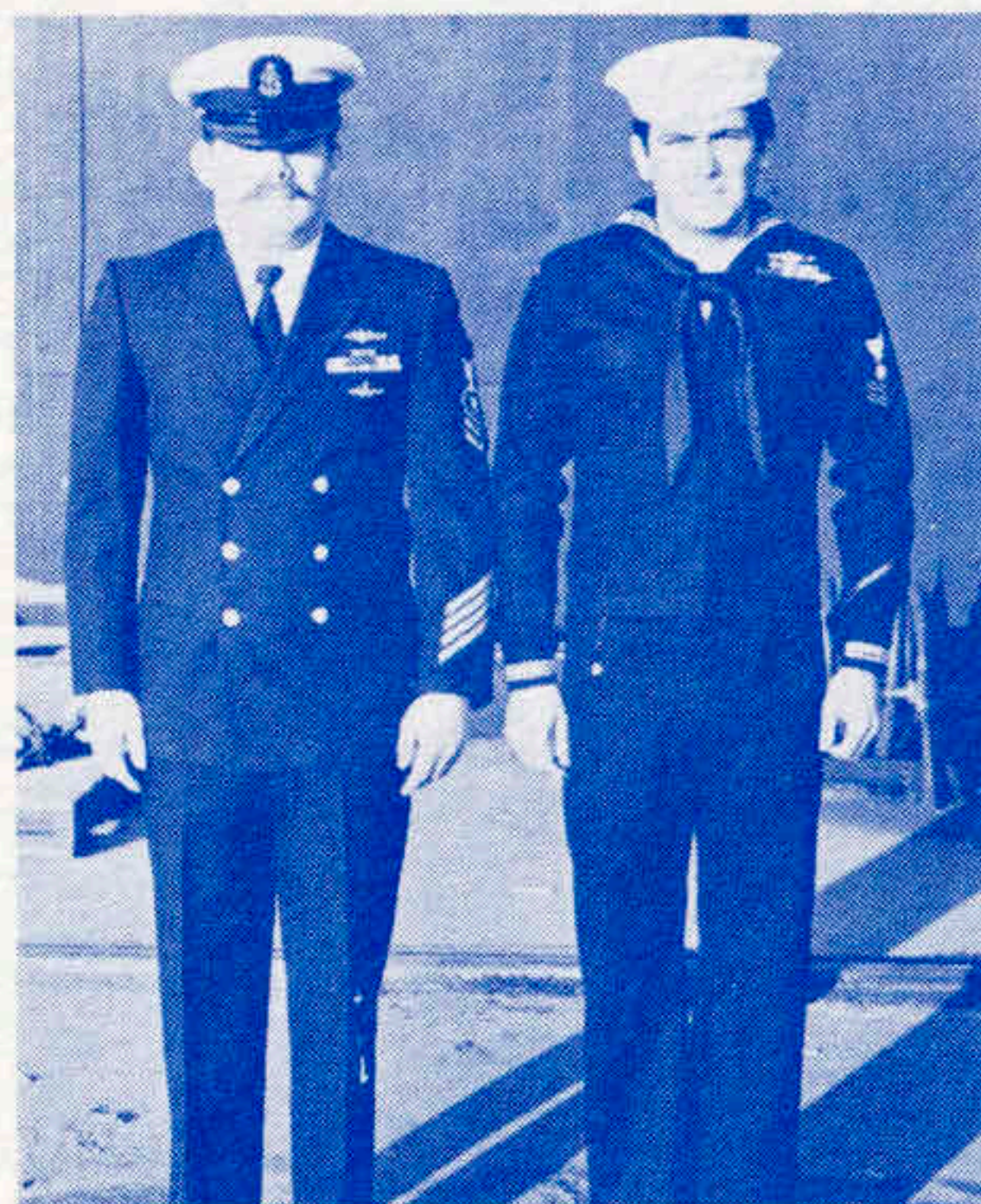
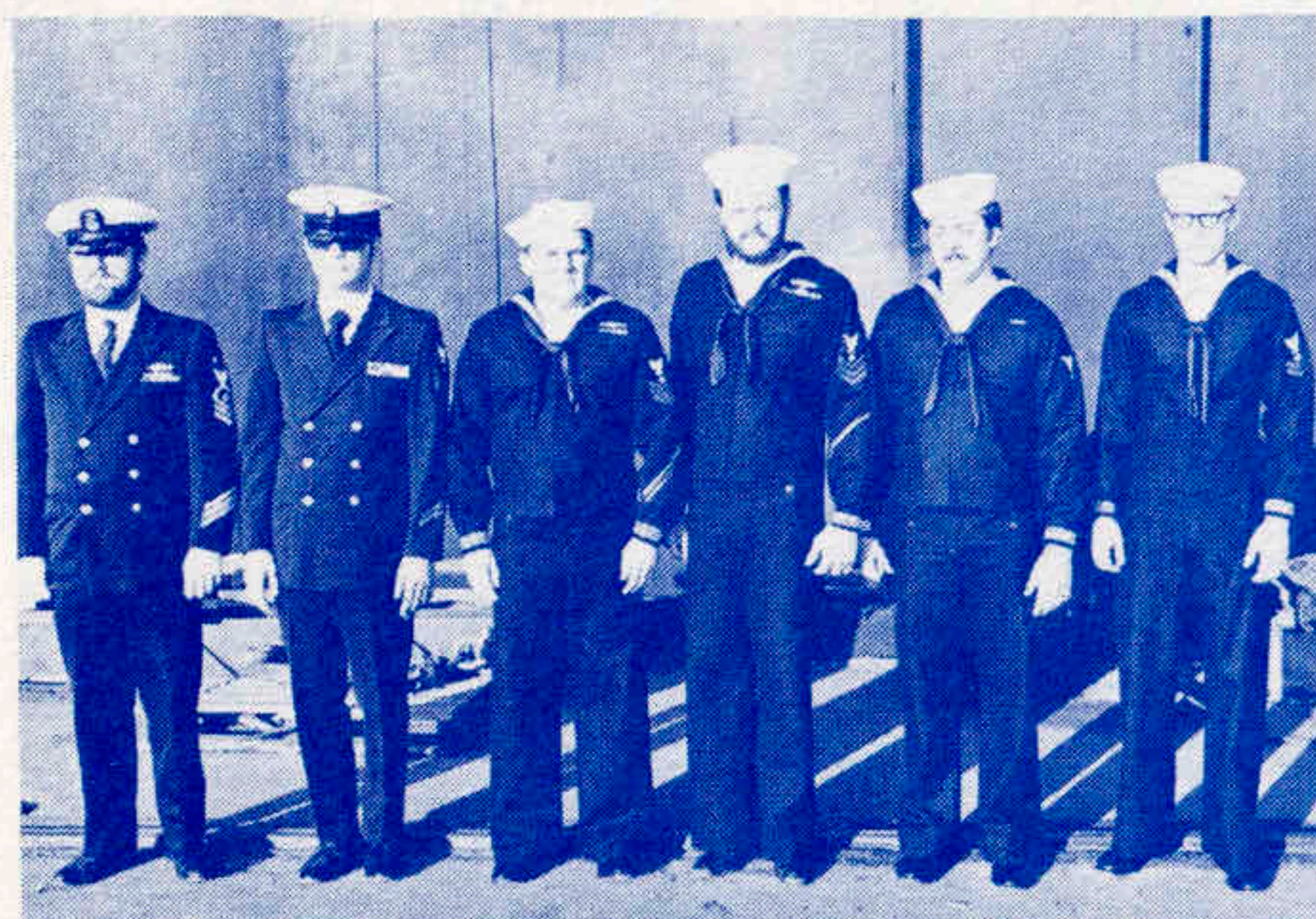
UNITED STATES COAST GUARD BAND



## EXECUTIVE DEPARTMENT

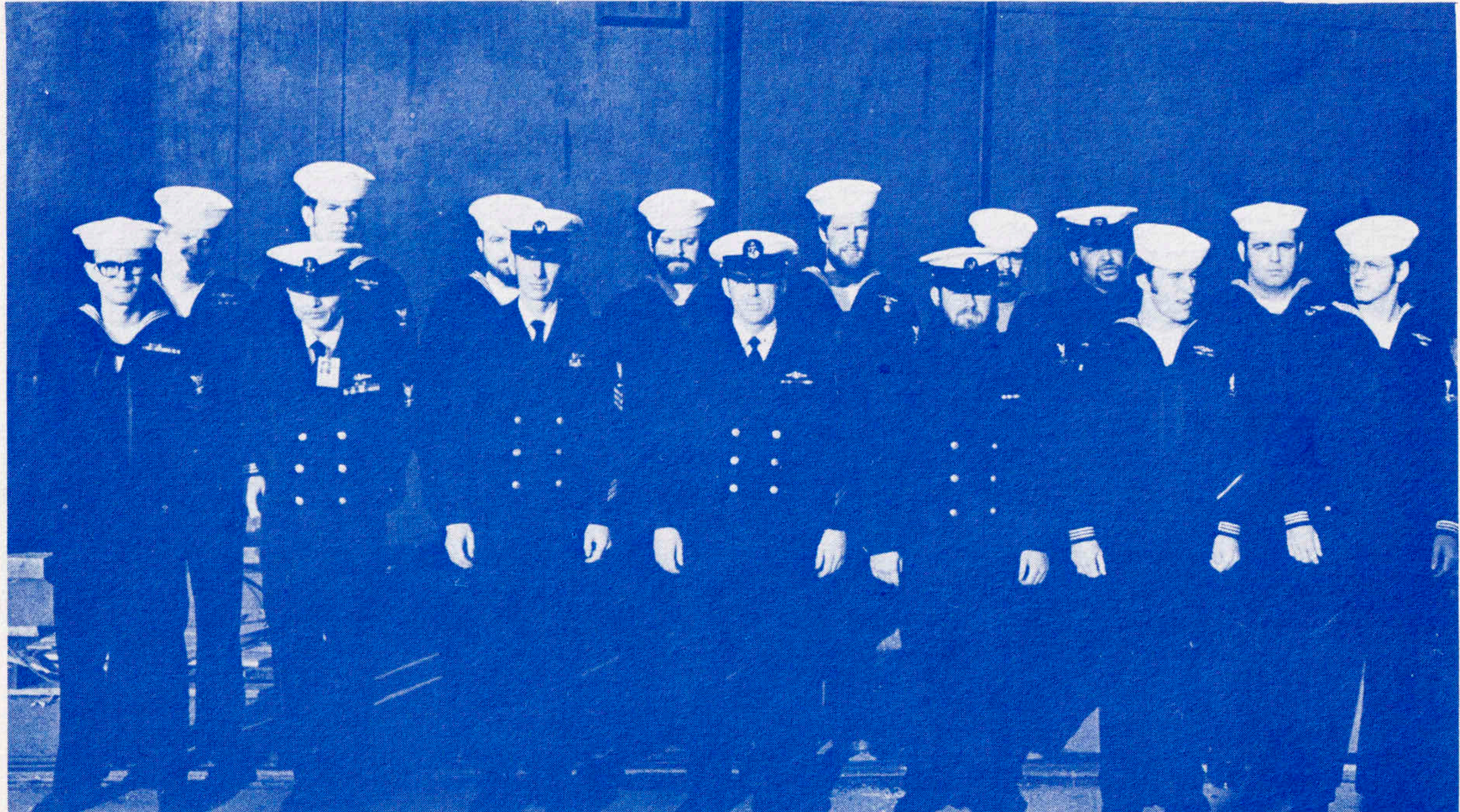


## NAVIGATION/OPERATIONS DEPARTMENT



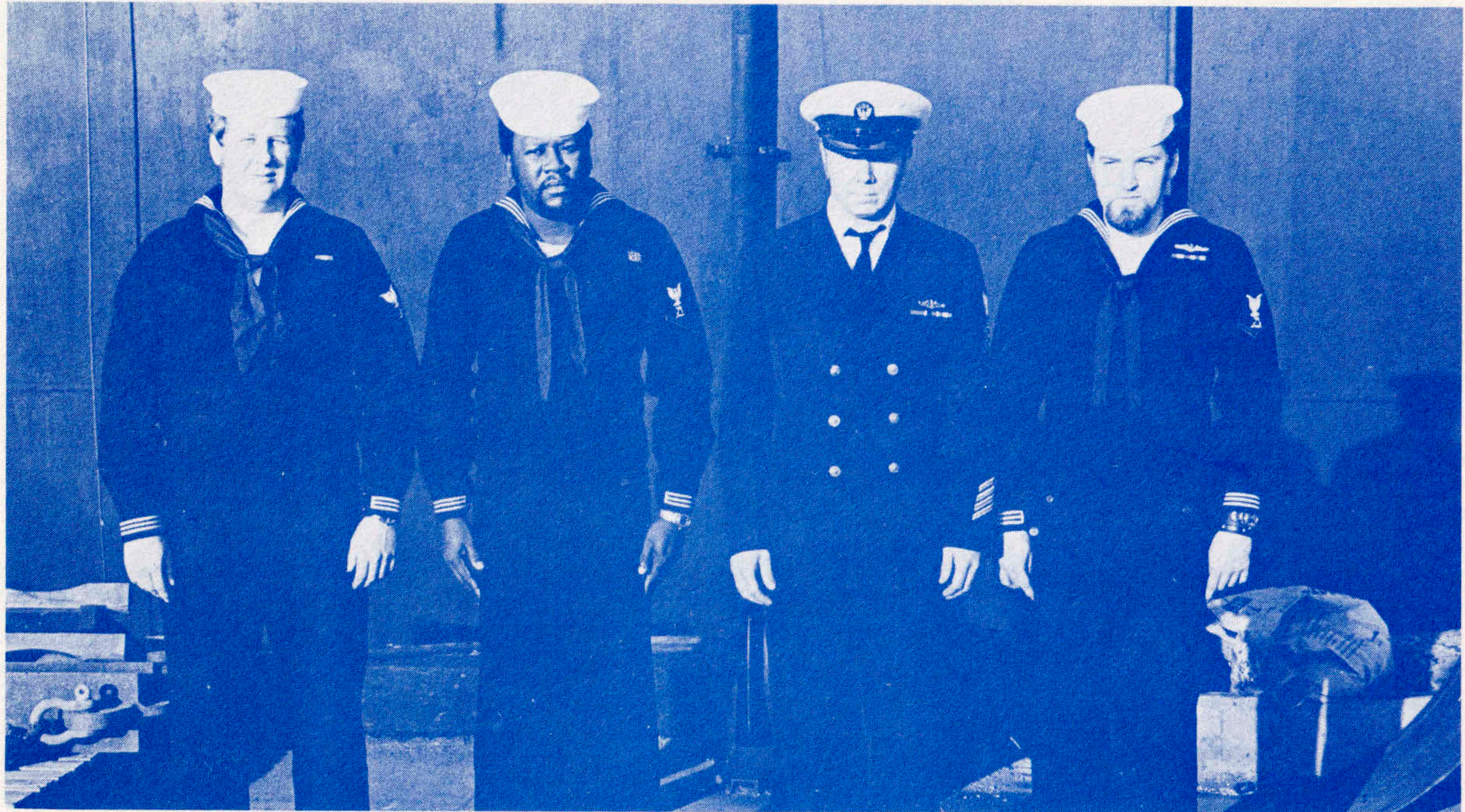


## WEAPONS DEPARTMENT



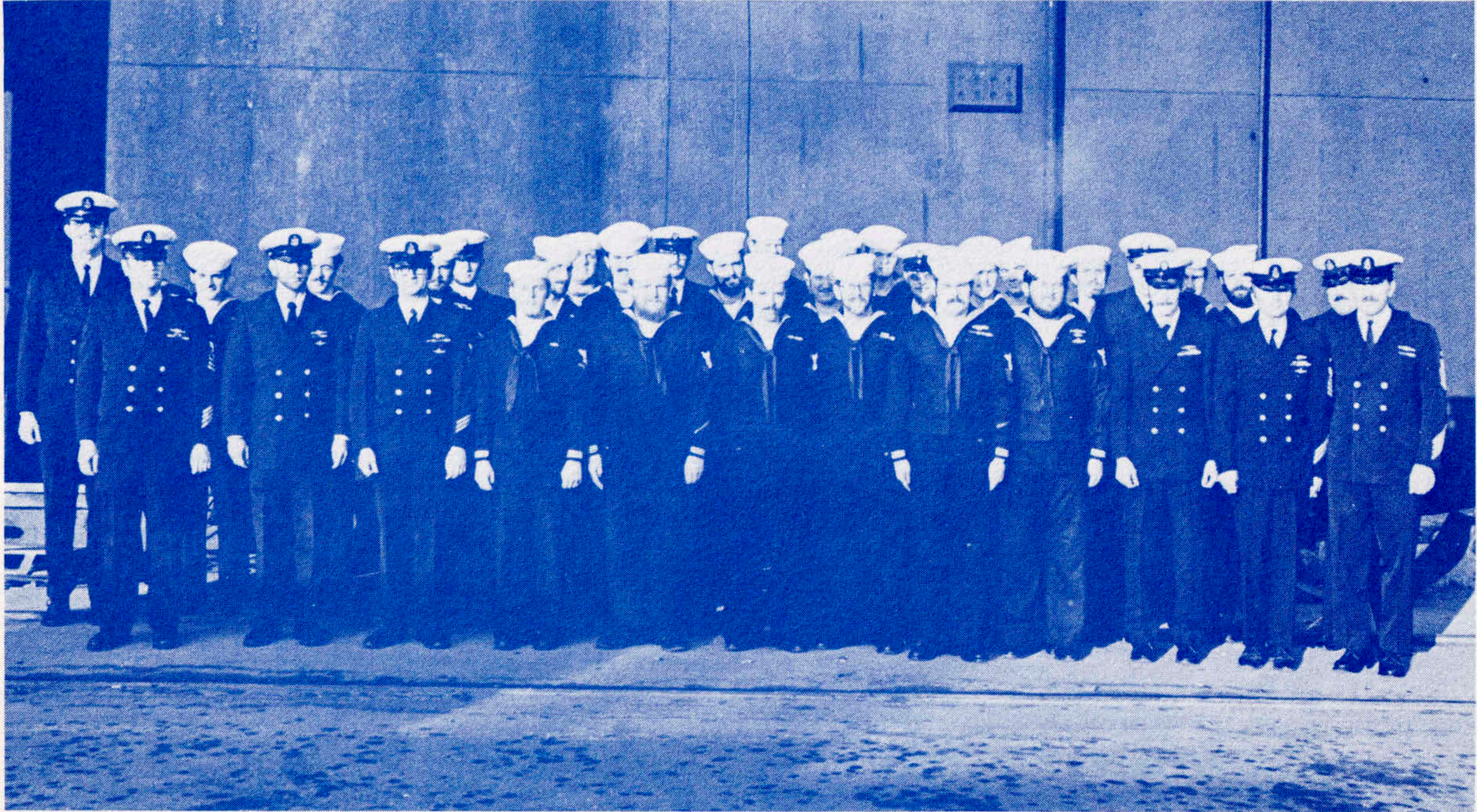


## SUPPLY DEPARTMENT

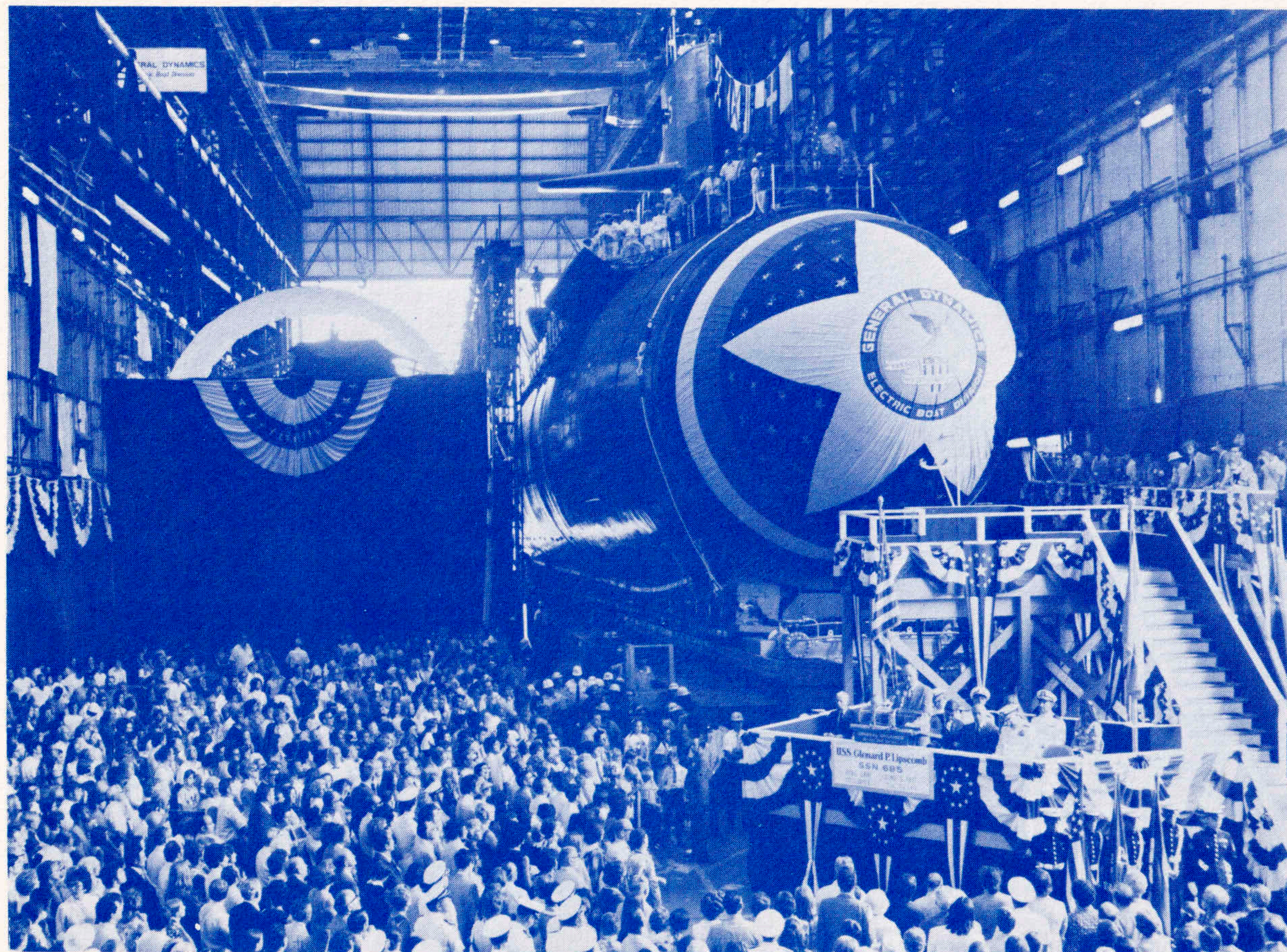




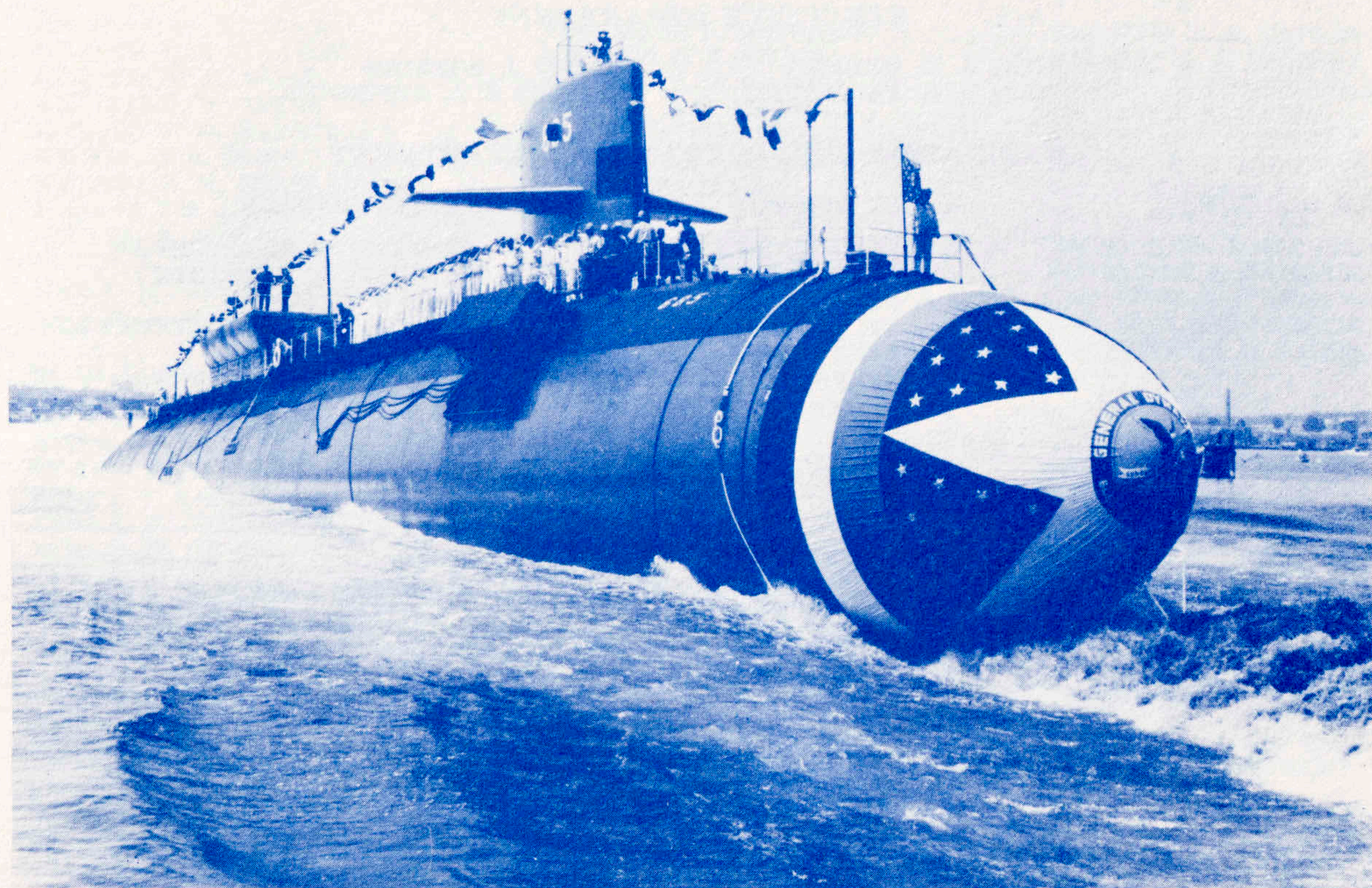
## ENGINEERING DEPARTMENT













# CREW ROSTER

## EXECUTIVE DEPARTMENT

ETCM(SS) D. M. QUIGLEY  
HMCS(SS) B. D. REPPHUN

YNC(SS) J. ROBERTS  
YNSN(SU) J. A. REPENNING

## NAVIGATION AND OPERATIONS DEPARTMENT

### QM DIVISION

QMC(SS) M. W. PERRY  
QM1(SS) J. S. THOMPSON  
QM1(SS) L. R. NOVINEER  
QM3 S. C. MELDER  
QMSN B. D. JAGGERS

### ET DIVISION

ET1 A. L. SIVUMAKI  
ET1(SS) A. B. OMAN  
ET1(SS) D. A. BLAIS  
ET1(SS) W. B. DOBBS  
ETN2 G. D. STONE  
ETR2 R. A. SAUERWEIN  
ETR3(SS) R. S. WILSON

### RADIO DIVISION

RMC(SS) W. D. BRATCHER  
RMC(SS) G. E. McCARTY  
RM2 W. H. STIERS  
RM3 E. M. SCHMACHTENBERGER

## WEAPONS DEPARTMENT

### TM DIVISION

TMC(SS) W. G. MILLER  
TMC(SS) K. M. PRENDERGAST  
TM1(SS) J. E. ERDMANN  
TM2(SS) D. G. OSBORN  
TM2(SS) L. D. DAY  
TM2(SS) G. L. BROWN

### FT DIVISION

FTGC(SS) A. R. ISHIHARA  
FTG1 L. "G" SMITH  
FTG2 D. J. GAUCHER  
FTG2(SS) J. L. REIMBOLT

### ST DIVISION

STCS(SS) G. G. WARD  
ST1(SS) C. HAYES  
ST1(SS) R. M. TRACEY  
STS2(SS) J. P. CUMMINGS  
STS2 J. S. SPILLER  
STS2(SS) K. D. COFFMAN  
STS2 T. E. KALB  
STS2 J. G. VILLELLA  
STS3(SS) D. P. DOTY  
STS2(SS) M. D. HOLT  
STS3(SS) M. A. CARVER  
STS3(SS) D. R. PIESKER  
STS3 R. H. HICKS



## ENGINEERING DEPARTMENT

### A DIVISION

MMCS(SS) H. FERRARO  
MMC(SS) H. K. KRAUSE  
MMC(SS) W. H. WOOD  
MMC(SS) D. W. SMITH  
MM1(SS) G. W. HARRIS  
MM1(SS) J. A. DUNN  
MM1(SS) D. M. SHAW  
MM1(SS) J. S. ALTMAN  
MM2(SS) S. A. ROSS  
MM3 H. L. STAPLES  
MM3 R. D. CHATTERTON  
SA M. G. LANDRY

### RC DIVISION

ETCS(SS) W. R. SALEN  
ET1(SS) A. A. JACOBY  
ET1(SS) P. A. FLORY  
ETN2 S. V. HENDERSON  
ETR2 K. P. JESSEN  
ETR2 E. W. ORWIG  
ETR2 J. M. REINHART  
ETR3 A. D. WARNER

CS1(SS) R. M. DYER  
CS2(SS) A. J. NANCE  
CS3(SS) J. SIMS  
CS3(SS) R. C. SIGNS  
CS3 R. E. WATTON  
CSSA J. J. BIXBY

### M DIVISION

ENC(SS) G. A. McRORIE  
MMC(SS) L. T. SMITH  
MM1(SS) T. D. MADSEN  
MM1(SS) J. V. PRINCIPE  
MM1 W. E. MOOKHOEK  
MM1(SS) M. W. KUEHN  
MM1 B. W. CHAPIN  
MM1(SS) R. S. WEBB  
MM2 M. V. STERN  
MM3 C. O. TUFFIN  
MM3 D. W. FLACK  
MM3 R. D. ACKER  
MM3 G. L. ELLIS  
MM3 W. M. ARTHURS  
MM3 M. W. HUGG

### L DIVISION

MM1(SS) R. M. KEITH  
MM2 R. J. KIESLING  
MM2 E. M. SEESE  
MM2 D. A. SCHWEICKERT

## SUPPLY DEPARTMENT

SD1(SS) J. R. FANUGAO  
SDSN(SS) R. G. BATARAO  
SDSN F. J. POSEY

### E DIVISION

EMCS(SS) F. B. TAPLEY  
EMC(SS) A. J. ELNICKI  
EM1(SS) T. F. MITCHELL  
EM1(SS) J. R. GANN  
EM1(SS) J. C. BIGGER  
EM1(SS) R. E. JOHN  
EM1 J. E. SENTLEY  
EM1 A. C. ZUEHLKE  
EM1 J. F. KASLOW  
EM1(SS) R. A. SANAKER  
EM1(SS) R. O. THOMA  
EM2 W. E. HENSHAW

### IC DIVISION

ICC(SS) S. G. BLAIR  
IC1(SS) W. H. TIMBY  
IC2(SS) W. L. CASE  
IC3 A. R. JENSEN  
IC3 R. R. HARLESS

SKC(SS) W. R. BONNETT  
SK3 T. E. FORRESTER



## IN RECOGNITION

The members of LIPSCOMB's Pre-Commissioning Crew listed below who labored long and hard during the building of LIPSCOMB are not present at Commissioning but are listed herein in recognition of the significant contributions they made toward its final excellence. They are considered SHIPMATES.

LT R. F. RENUART

LT T. P. TONDEN

FTG1 D. M. BARGER

ENCM R. G. EASLICK

MMC E. L. IRWIN

EMC R. F. McCLAREN

CS1 R. BYRNES

ET1 N. L. CRARY, JR.

MM1 W. A. KOSS

MM1 L. MONTES, JR.

ET1 L. D. WARNER

IC1 W. N. FERGUSON

CS2 T. E. PURDIE

ETR2 W. A. MASON, JR.

YN2 S. C. HANSCOM

ETR3 J. E. WILLIAMS

MM3 W. J. MALATINSKY

MM3 R. A. MAGNOTTE

QMSN S. P. FLEWELLING

MM3 J. M. SARNO

STS3 D. D. McARDLE



## INSIGNIA/SHIP'S SEAL

The insignia is in the shape of a shield, symbolic of defense and representative of USS GLENARD P. LIPSCOMB's primary mission — defense of the country.

The mace in the center of the insignia is emblematic of authority and power and symbolic of respect and discipline; both characteristics of the man Glenard P. LIPSCOMB. The mace is also a weapon of offense in war, another mission of the ship, USS GLENARD P. LIPSCOMB. Finally, the mace depicted in this insignia is the symbol of office of the House of Representatives of the Congress of the United States of America where the Honorable Glenard P. LIPSCOMB served, a representative from the state of California.

The nine stars signify the nine consecutive terms, 1953 to 1970, Glenard P. LIPSCOMB served in the House of Representatives.

The two dolphins are a legendary symbol of the sea and the creatures which live within the sea, the natural habitat of USS GLENARD P. LIPSCOMB. The dolphins are also the traditional emblem of the United States Submarine Service of which the ship LIPSCOMB is a unique and distinct part.

The colors, blue and gold, are the traditional colors of the United States Navy.



