



COMMISSIONING

**USS LOS ANGELES
SSN-688**

13 NOVEMBER 1976



**NEWPORT NEWS SHIPBUILDING
AND DRYDOCK COMPANY**

NEWPORT NEWS, VIRGINIA



COMMISSIONING CEREMONY: A TRADITION



The Commissioning Ceremony signifies the acceptance for service and entry of a ship into the active fleet of the United States Navy. At the moment of breaking the commissioning pennant, LOS ANGELES becomes, as any proud ship of the line, USS LOS ANGELES. The Naval Commissioning Ceremony is a custom deep in tradition in all navies for centuries and in the United States Navy since its earliest beginnings, for it marks the formal inception of a man-of-war into the Naval forces of her nation. It is the final and perhaps most significant event of the triad that brings a ship to life: keel laying, christening, and commissioning carries a ship from an idea to a reality.

In the early periods of our Navy's history no exact procedure for commissioning was prescribed. Thus, a ship's date of commissioning was recorded as any number of days: when the colors were first raised, when the officers and crew reported on board, when the first log entry was made, or when the ship first put out to sea. Throughout the years, however, one visible and significant manifestation of the commissioned ship has remained constant: active ships of the United States Navy, from days of the handsome frigates under sail to the era of nuclear power, have proudly worn a commissioning pennant and the "Stars and Stripes."

The commissioning pennant has for centuries been the symbol of the man-of-war. Today, as the distinctive mark of a ship in commission, it is flown, except when displaced by the personal flag of an admiral or commodore embarked aboard the ship. The origin of the commissioning pennant, like many of our traditions, can be traced to the British Navy. When the Dutch Admiral Van Tromp defeated an English fleet in 1692, he cruised with a broom at his masthead to

signify that he had swept his enemies from the sea. When fortune was reversed the following year, the British admiral hoisted a long streamer from his masthead to represent the lash of a whip, thus indicating that he had whipped his adversary off the water.

As technology increased the number of guns and other equipment topside, the length of the pennant was shortened. For many years, the pennant had thirteen stars, symbolic of the thirteen original colonies. In 1933, the seven star pennant became standard. It continues to fly as the proud symbol of a ship serving in the cause of freedom.

Today, at the moment of breaking her commissioning pennant, you witness the USS LOS ANGELES come to life. At that moment she becomes the responsibility of her Captain and Crew. From this day forward she will assume a unique personality and become infused with the will, the spirit and the dedication of those who serve in her. USS LOS ANGELES also acquires a special international distinction today: wherever she sails she will project the character of her parent nation and her namesake state in providing for its security and well-being.

The modern commissioning ceremony is devoid of the ancient pagan rituals which were instituted to ward off evil spirits and seafaring denizens. We have outgrown these primitive superstitions; yet even today the experienced sailor senses a certain mystery about the sea. We believe your presence here today will ensure us "fair winds and a following sea" in all that lies ahead. Thank you for coming.

**UNITED STATES SHIP
LOS ANGELES
(SSN 688)**

NUCLEAR POWERED ATTACK SUBMARINE

**BUILT BY
NEWPORT NEWS SHIPBUILDING AND DRYDOCK COMPANY
NEWPORT NEWS, VIRGINIA**

**KEEL LAID
LAUNCHED
COMMISSIONED**

**8 JANUARY 1972
6 APRIL 1974
13 NOVEMBER 1976**

**SPONSOR
*THE HONORABLE ANNE ARMSTRONG***



CITY OF LOS ANGELES

The City of Angels, nestled between majestic mountains and the blue Pacific on the coast of Southern California, is the second largest city, by area, in the United States and ranks third by population. Originally named "El Pueblo De Nuestra Sonora La Reina de Los Angeles de Porciuncula" (The Town of Our Lady the Queen of Angeles of Porciuncula) in 1771 by the Governor of California, the name was later shortened to Los Angeles. The world famous motion picture industry is located in Hollywood within the city limits of Los Angeles. The city is also an exporter of airplanes, airplane parts, cotton, petroleum products, citrus produce, and many other items.

Los Angeles welcomes visitors to partake of the California life style, where trends are set for the rest of the world to follow.

DISTINGUISHED ANCESTRY OF THE LOS ANGELES

The first LOS ANGELES, a naval overseas tanker, was built by the Union Iron Works in San Francisco, California, for the Union Oil Company and was launched in 1916. On 9 August 1917 she was commissioned by the Navy under the command of LCDR Alexander Mackenzie, USNRF. LOS ANGELES operated along the Atlantic and Gulf coasts during 1917 and in 1918 was assigned to transatlantic crossings carrying fuel oil to Brest, France, and Portsmouth and Devonport, England. In 1919, at the end of World War I, LOS ANGELES was decommissioned and returned to her former owners.

The second LOS ANGELES was commissioned an air ship, the LOS ANGELES (ZR3) on 25 November 1924 and remained in commission until 30 June 1932. The airship LOS ANGELES was built by the Zeppelin Airship Company at Friedrichshafen, Germany, for the United States Government. She was christened by Mrs. Grace Coolidge, wife of President Calvin Coolidge and placed under the command of LCDR Maurice R. Pierce, USN. LOS ANGELES served for more than 7 years as an aerial laboratory and testing station for numerous experiments in the development of coordinated naval air and sea tactics.

The third LOS ANGELES, a heavy cruiser was commissioned USS LOS ANGELES (CA135) on 22 July 1945 and placed under the command of CAPT John A. Snackenburg, USN. Her sponsor was Mrs. Fletcher Bowron, wife of the Mayor of Los Angeles. USS LOS ANGELES (CA135) served in the Seventh Fleet cruising off the coast of China and in the western Pacific to the Marianas, from 3 January 1946 until 21 January 1947. She was decommissioned on 9 April 1948. In January 1951, USS LOS ANGELES (CA135) was recommissioned under the command of CAPT Robert N. McFarlane. She was deployed to the Far East in support of operations in the Korean conflict. USS LOS ANGELES (CA135) served as the Flag Ship for RADM Arleigh E. BURKE, COMCRUDIV FIVE, providing gunfire support and bombardment at KojiNi and Wonsan and other coastal areas. She received minor damage from shore gunfire in March 1953 and returned to Long Beach, California on 15 May 1953. From 1953 to 1963 LOS ANGELES made six deployments to the Far East and participated in the Quemoy-Matsu operation of 1956. On 15 November 1963, USS LOS ANGELES (CA135) was decommissioned.

"I WISH TO HAVE NO CONNECTION WITH ANY SHIP THAT DOES NOT SAIL FAST, FOR I INTEND TO GO IN HARM'S WAY..."

JOHN PAUL JONES

USS LOS ANGELES (SSN688)

The USS LOS ANGELES (SSN668) is the Navy's 109th nuclear powered submarine and the 67th of the attack submarine fleet. She is the lead ship for a new class of high speed nuclear attack submarines. LOS ANGELES began her waterborne career on 6 April 1974 when she was launched by the Newport News Shipbuilding Company in Newport News, Virginia. LOS ANGELES was christened by Mrs. Armstrong, then counsellor to the President of the United States. LOS ANGELES' launching on 6 April 1974 coincided with the keel laying of a sister ship the USS CINCINNATI (SSN 693), the first of its kind ceremony at Newport News Shipbuilding. Nearly 39 months after launch, LOS ANGELES set out on her initial sea trials to test operation of the nuclear propulsion plant under the direction of Admiral H. G. Rickover, the Deputy Commander for Nuclear Propulsion of the Naval Sea Systems Command and head of the Naval Reactors branch of the Energy Research and Development

Administration. Immediately after completion of the first sea trials, further trials were commenced to test the complex sonar and weapons systems installed in LOS ANGELES.

LOS ANGELES brings to the fleet the unlimited endurance of nuclear power, the most advanced submarine detecting system and an impressive underwater weapons launch system. The LOS ANGELES is capable of high speed support operations complementing the carrier task forces of the United States Navy.

LOS ANGELES' crew of 12 officers and 115 enlisted men have been with her for over three years. This time has been spent in extensive training on the new and complex subsystems of the ship and in onboard testing of LOS ANGELES' equipment. The crew has also performed five separate underway tests prior to delivery of the ship to the United States Navy.

SHIPS CHARACTERISTICS

Length Overall	360 feet
Maximum Beam	33 feet
Surfaced Displacement	6100 tons
Submerged Displacement	6900 tons
Maximum Depth	In excess of 400 feet
Maximum Speed	In excess of 20 knots
Armament	Four 21 inch Torpedo Tubes
Power Source	S6G Nuclear Reactor
Ship's Complement	12 officers/115 enlisted men



LOS ANGELES INSIGNIA

The design for the ship's insignia was chosen from a number of drawings submitted by high school students of Los Angeles, California. Miss Sandra Higashi's design depicts the history of previous units named LOS ANGELES and exemplifies the characteristics of the submarine, LOS ANGELES. Each of the porpoises represent one of the units bearing the name of the city of Los Angeles. Porpoises were chosen because they represent speed, grace, and endurance. Porpoises or "dolphins", as they are sometimes labelled, are symbolic of a calm sea and sometimes called a "sailor's friend."



USS LOS ANGELES SPONSOR THE HONORABLE ANNE ARMSTRONG



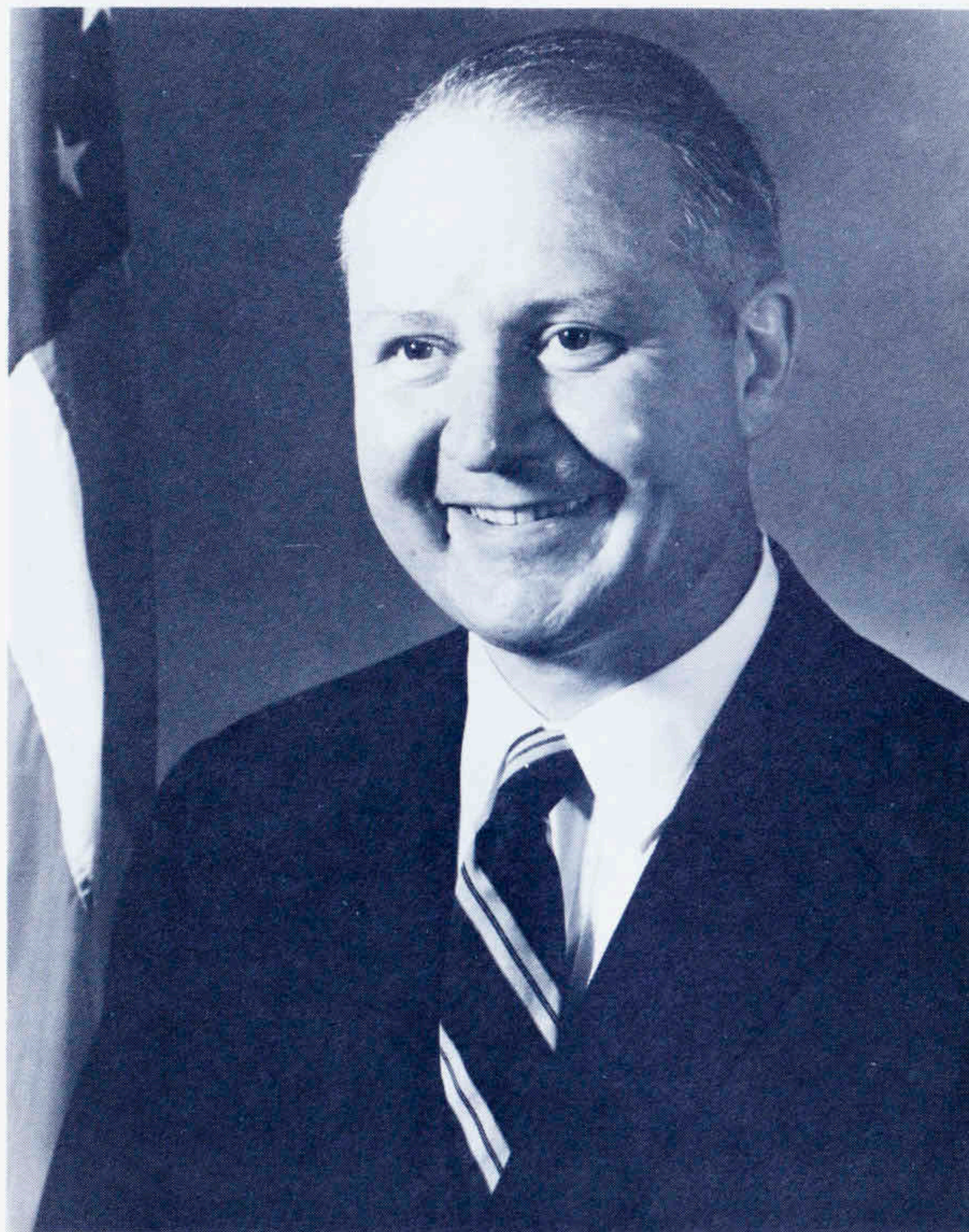
Mrs. Anne Armstrong, then Counsellor to the President and now United States Ambassador to Great Britain, during her confrontation with a stubborn champagne bottle at the launching of the LOS ANGELES on April 6, 1974. In the first photo, she awaits word from Newport News Shipbuilding president John P. Diesel to "hit it." In the second photo, Mrs. Armstrong follows through on one of a dozen swings that failed to shatter the bottle to splash champagne on the ship's bow. The bottle was exchanged for a spare, and broke on the first swing.

"The second bottle was to christen the USS LOS ANGELES: the first bottle was to show that the ship and her crew are staunch and strong and unyielding." With these words, Mrs. Anne Armstrong, sponsor of the lead ship of the Nation's newest class of nuclear-powered attack submarines, graciously accepted the shattered remains of a champagne bottle that did break, and a slightly battered but still intact bottle that didn't break after 12 attempts.





**SECRETARY OF THE NAVY
THE HONORABLE
J. WILLIAM MIDDENDORF II**



THE SECRETARY OF THE NAVY
WASHINGTON, D. C. 20350

Commander John E. Christenson, Jr., USN
PCO, LOS ANGELES (SSN-688)
Newport News Shipbuilding and Drydock Company
Newport News, Virginia 23607

Dear Captain:

Congratulations on your new command and best wishes to you and to your crew on the commissioning of LOS ANGELES (SSN-688).

Your ship, the lead ship of a powerful new class of nuclear-powered attack submarines, perpetuates the name of the third largest city in the United States and is the fourth United States Navy ship to bear the name of LOS ANGELES. The first LOS ANGELES, an oiler, saw duty during World War I. The second, a dirigible, operated as an aerial laboratory and testing station for numerous experiments in the development of coordinated naval air and sea tactics until being struck from the Navy list in 1939. The third ship to bear the name LOS ANGELES was a cruiser. She performed valuable service with the Pacific Fleet after World War II and earned five battle stars in support of the United Nations effort during the Korean War. The proud record of these ships should provide a source of inspiration to the officers and men of your ship in the years to come.

Our warships of today are much more sophisticated and capable than those they replace. It is to you and to those who serve with you that we now look to make this LOS ANGELES a fully effective instrument of seapower in our nation's defense. May you meet with every success.

Sincerely,

J. William Middendorf II



CHIEF OF NAVAL OPERATIONS

Dear Captain,

My best wishes go to you and to your ship's company on the commissioning of LOS ANGELES (SSN-688).

You have been assigned to the command of a major component of the U. S. fleet, a ship of the line which will play a vital role in the Navy's ability to carry out its mission in support of the national strategy. Consequently, the responsibility placed on your shoulders and the service requirements levied on you will indeed be great. I urge you to strive to exercise to the greatest degree those qualities of leadership which were instrumental in leading to your selection for this command.

As the first crew of a new ship, you and all who serve with you are given a unique opportunity. Your attitudes and techniques will be reflected by your wardroom and ultimately by every man in your crew. LOS ANGELES will develop a character, set in its ways, by the image you will project. I am confident that you will exploit every opportunity and develop every talent to produce a truly fine ship which will always be ready if the call to defend our country should ever come.

On behalf of the Navy, I welcome LOS ANGELES to the fleet.

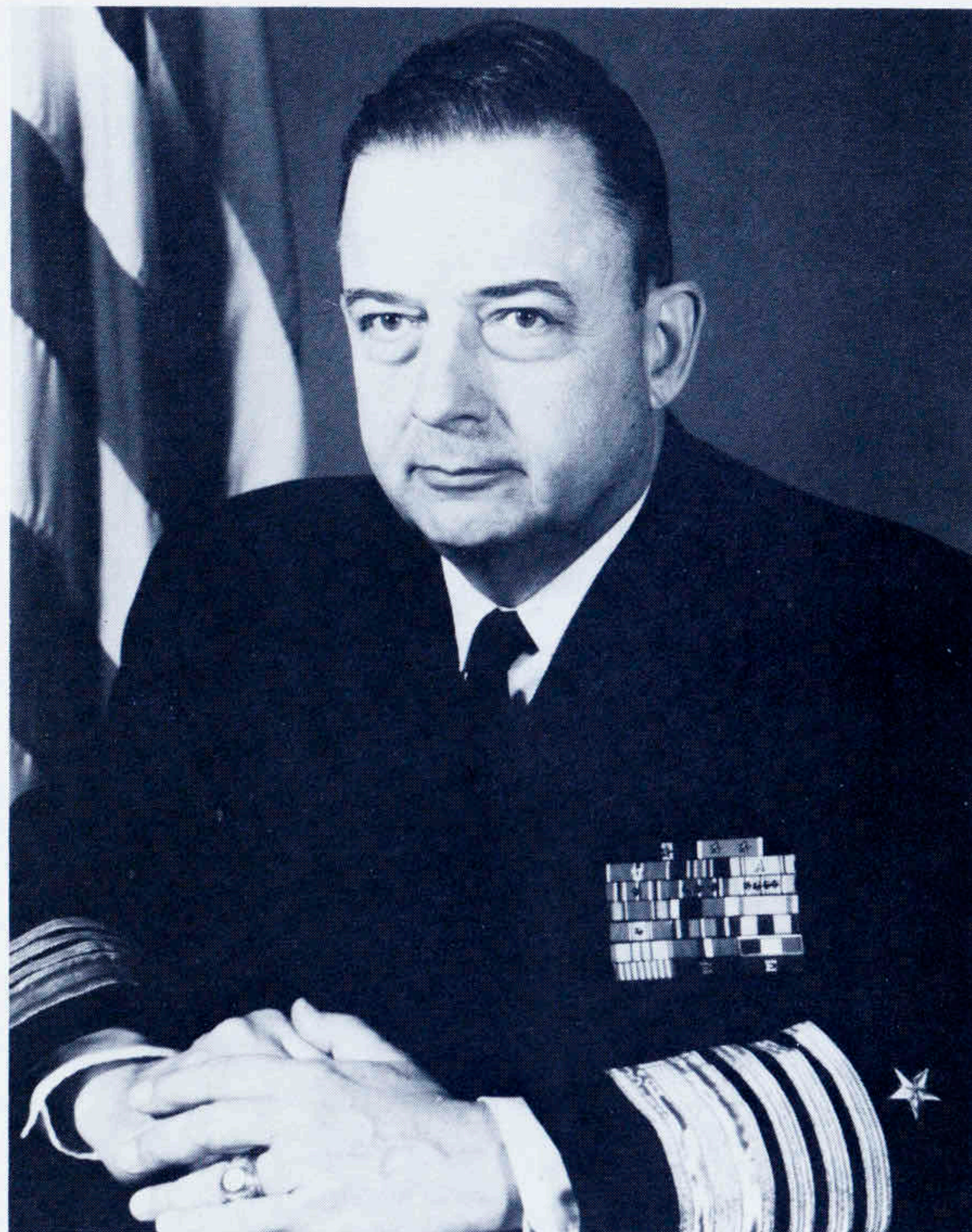
Sincerely,

J. L. Holloway III
J. L. HOLLOWAY III
Admiral, U.S. Navy

CHIEF OF NAVAL OPERATIONS ADMIRAL J. L. HOLLOWAY III



**COMMANDER IN CHIEF,
U. S. ATLANTIC FLEET
ADMIRAL I. C. KIDD, JR.**



COMMANDER IN CHIEF ATLANTIC
AND
COMMANDER IN CHIEF U. S. ATLANTIC FLEET

29 October 1976

Dear Commander Christensen,

On the occasion of the commissioning of USS LOS ANGELES (SSN 688) I extend to you and to all hands my congratulations and best wishes.

LOS ANGELES joins the Atlantic Fleet Submarine Force during a period of growing emphasis on "leaner and trimmer" seapower and at a time when U. S. naval forces face a mounting challenge on the world's oceans. New construction ships like LOS ANGELES are designed to meet this challenge and will be key elements of the Navy of the 1970's.

As her first commanding officer, your task is to ready this ship to confront, engage and overcome the challenges that lie ahead. The reputation she earns will reflect the dedication and professionalism of all hands; your personal resourcefulness and individual leadership will help set that reputation in the tradition of the Submarine Force.

I am confident LOS ANGELES will prove a valuable addition to the U. S. Atlantic Fleet. Welcome and good luck.

Sincerely,

A handwritten signature in dark ink, appearing to be "I. C. Kidd, Jr.".

I. C. KIDD, JR.
Admiral, U. S. Navy

**COMMANDER
U. S. SUBMARINE FORCE
ATLANTIC FLEET
VICE ADMIRAL JOE WILLIAMS, JR.**



**COMMANDER
SUBMARINE SQUADRON SIX
CAPTAIN A. B. SCOTT**



MAYOR, CITY OF LOS ANGELES THE HONORABLE TOM BRADLEY



CITY HALL
LOS ANGELES, CALIFORNIA 90012
(213) 485-3311

OFFICE OF THE MAYOR

TOM BRADLEY
MAYOR

August 17, 1976

Commander John E. Christensen
Prospective Commanding Officer
USS LOS ANGELES (SSN-688)
Supervisor of Shipbuilding,
Conversion and Repair
Newport News, Virginia 23607

Dear Commander Christensen:

I want to take this opportunity to congratulate you on being placed in command of the LOS ANGELES (SSN-688). As you know, all of us in Los Angeles are, indeed, proud to have another ship named after our great City. I am sure you will command our namesake in the manner that is both becoming to the Navy, our City, and Nation.

Our hopes and prayers go with you as you and your officers and crew sail the high seas in pursuit of peace for all the world.

Again, congratulations!

Sincerely
Tom Bradley
TOM BRADLEY
Mayor

TB/gb

PRINCIPAL SPEAKER CAPTAIN JACKIE COOPER

Captain Jackie Cooper, a commissioned officer in the Naval Reserve since 1962, is a Public Affairs Specialist who has contributed a great deal of time, talent and energy to a number of worthwhile Navy projects. He narrates public service and training films, makes personal appearances, acts as a valued advisor in the field of motion pictures and television, and is the Navy's unofficial representative in the entertainment industry.

His work has earned him commendations from four Secretaries of the Navy, the Chief of Naval Operations, and the President of the Navy League.

Captain Cooper's close association with the Navy began in World War II when the former child star gave up a very successful movie career to come into the Navy as an enlisted man. He served on active duty for three years, one of which was spent in the South Pacific.

As an actor, some of his most favorite roles were those in which he portrayed Navy men. These include Ensign Pulver in the national stage company of "Mr. Roberts," and Lieutenant Chick Hennesey in the successful television series "Hennesey."

In recent years Cooper has distinguished himself as a director with an award winning Emmy for comedy direction in MASH. He has shifted his acting into a new dimension—playing killers. He did a lethal politician in Columbo, then followed with similar sinister characters on Kojak, Hec Ramsey and Police Story.

Captain Cooper is married and resides with his wife and three children in Beverly Hills.



COMMISSIONING

BAND SELECTIONS



**COMMANDER IN CHIEF
U.S. ATLANTIC FLEET BAND**



ARRIVAL OF OFFICIAL PARTY



**INVOCATION
CAPTAIN M. B. SEIDER, CHC, USN
ATLANTIC FLEET CHAPLAIN**



**WELCOME
COMMANDER JOHN E. CHRISTENSEN, JR., USN
PROSPECTIVE COMMANDING OFFICER**



**BUILDERS REMARKS
ADMIRAL RALPH W. COUSINS, USN (Ret.)
EXECUTIVE VICE PRESIDENT
NEWPORT NEWS SHIPBUILDING AND DRYDOCK COMPANY**

**INTRODUCTION OF CO
U.S. ATLANTIC
BY VICE ADMIRAL JOE
COMMANDER SUBMARINE F**

**INTRODUCTION OF LOS
BY ADMIRAL I. C**

**MAYORS
HONORABLE T**

**INTRODUCTION OF TH
BY VICE ADMIRAL J**

**ADD
CAPTAIN JACKIE**

**READING OF COMMIS
VICE ADMIRAL JOE V**

NG CEREMONY

COMMANDER IN CHIEF,
ANTIC FLEET
DE WILLIAMS, JR., USN
FORCE, U.S. ATLANTIC FLEET

☆
S ANGELES CITY MAYOR
C. KIDD, JR., USN

☆
REMARKS
TOM BRADLEY

☆
THE PRINCIPAL SPEAKER
JOE WILLIAMS, JR.

☆
DRESS
IE COOPER, USNR

☆
MISSIONING DIRECTIVE
WILLIAMS, JR., USN

COMMANDING OFFICERS ORDERS
COMMANDER JOHN E. CHRISTENSEN, JR., USN



COMMISSIONING



SETTING THE FIRST WATCH
COMMANDER TOM R. MURRAY
EXECUTIVE OFFICER



RENDERING OF HONORS FOR
ADMIRAL I. C. KIDD, JR., USN
COMMANDER IN CHIEF, U.S. ATLANTIC FLEET

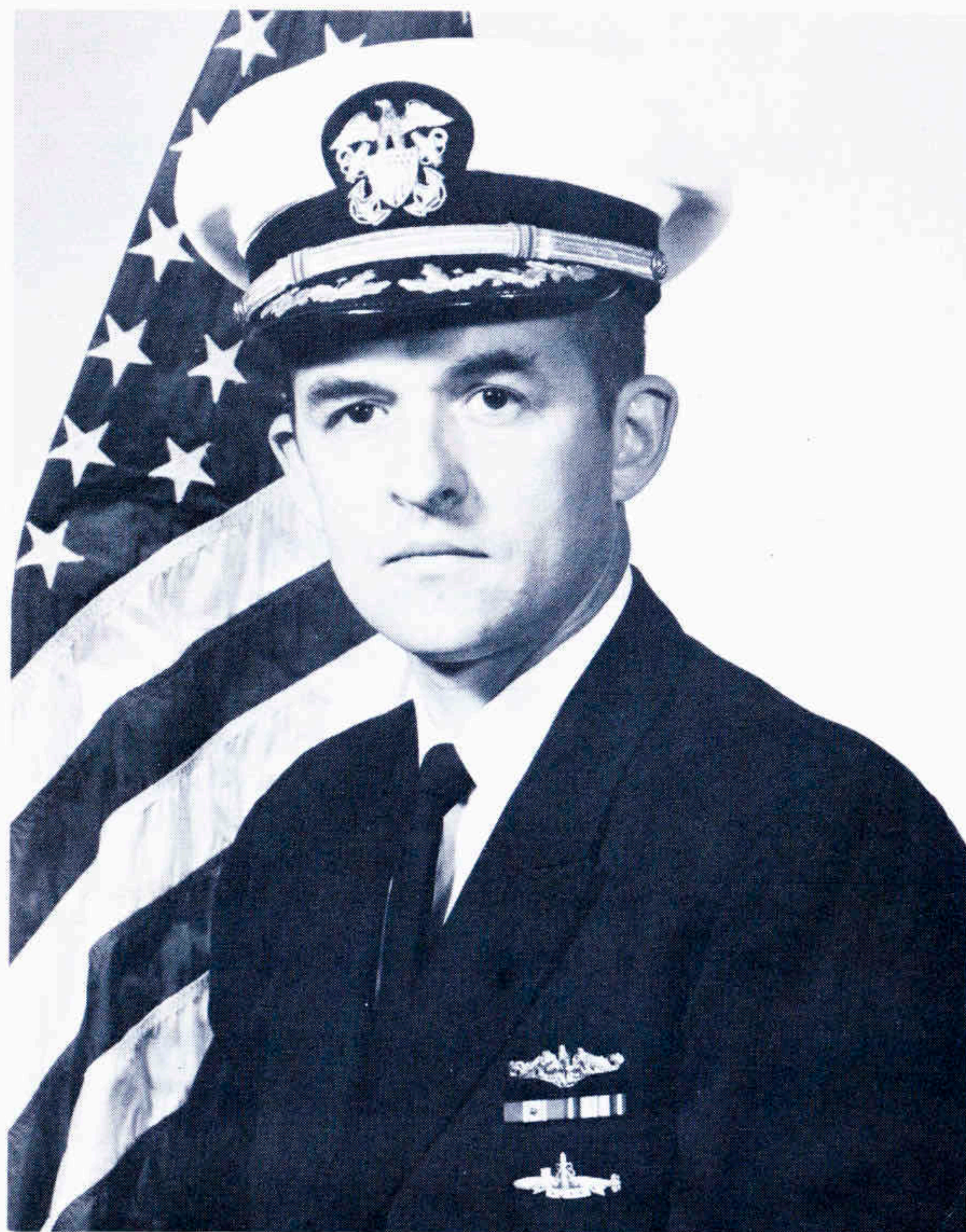


EXCHANGE OF GIFTS
COMMANDER JOHN E. CHRISTENSEN, JR., USN



BENEDICTION
CAPTAIN M. B. SEIDER, CHC, USN

THE COMMANDING OFFICER COMMANDER JOHN E. CHRISTENSEN, JR.



The responsibility of the commanding officer for his command is absolute, except when, and to the extent, relieved therefrom by competent authority, or as provided otherwise in these regulations. The authority of the commanding officer is commensurate with his responsibility.

— U. S. Navy Regulations, 1973

CDR CHRISTENSEN was born on 26 October 1935 near Syracuse, New York. He entered the Naval Academy in June 1953, and he graduated in June 1957. After graduation, CDR CHRISTENSEN remained for a brief time at the Academy as an instructor of Seamanship (sailing) for newly arrived Midshipmen.

In October 1957, CDR CHRISTENSEN received orders to the USS McDERMUT (DD 677) at San Diego, California, where he served as First Lieutenant and Anti-Submarine Warfare Officer until June 1959. He then attended the Naval Submarine School at New London, Connecticut, for officers basic submarine training. Following his graduation from Submarine School in January 1960, CDR CHRISTENSEN served on the USS BLUEGILL (SS 242) in Pearl Harbor, Hawaii, as Assistant Engineering Officer, First Lieutenant, Supply/Commissary Officer, and Communications Officer until April 1961. He was designated "Qualified in Submarines" while on the BLUEGILL. Also in April 1961, CDR CHRISTENSEN reported to the U. S. Naval Nuclear Power School, Mare Island, California, for advanced training in nuclear engineering, and, afterward, he was transferred to the Naval Nuclear Power Training Unit at Idaho Falls, Idaho for practical training. He completed new design reactor plant indoctrination at the Bettis Atomic Power Laboratory in Pittsburgh, Pennsylvania in June 1962. CDR CHRISTENSEN was assigned, in June 1962, to the USS ANDREW JACKSON (SSBN 619) as Main Propulsion Assistant and Engineer Officer. While on this nuclear-powered, ballistic missile submarine, he completed five strategic Polaris deterrent patrols. He then reported, in May 1966, to the Staff of Commander Submarine Squadron EIGHTEEN for a tour of duty as Squadron Material Officer; and, in October 1968, CDR CHRISTENSEN received orders to the USS FINBACK (SSN 670) Precommissioning Unit as Prospective Executive Officer. He was appointed to the staff of Nuclear Propulsion Directorate at Naval Ships Systems Command in Washington, D.C., in September 1970, as an assistant for officer training. In May 1973, CDR CHRISTENSEN assumed the duties of Prospective Commanding Officer, LOS ANGELES (SSN 688) and Commanding Officer LOS ANGELES Precommissioning Unit at Newport News Shipbuilding and Drydock Company, Newport News, Virginia.

CDR CHRISTENSEN is married to the former Deanna HAMMER of Effingham, Illinois. He and Mrs. CHRISTENSEN and their two children, Joan and Angela, reside in Newport News, Virginia.

THE EXECUTIVE OFFICER COMMANDER TOM R. MURRAY

CDR MURRAY was born on 3 February 1939 in McKinney, Texas. He entered the Naval Academy in July 1957 and graduated in June 1961.

After graduation, CDR MURRAY joined the wardroom of the USS DEHAVEN (DD 727) at Long Beach, California where he served as Damage Control Assistant, Machinery Division Officer, Boiler Division Officer, and Auxiliary Division Officer until August 1962. He then applied for and was accepted into the submarine nuclear power program. From September 1962 until March 1964, CDR MURRAY attended Submarine School in New London, Connecticut; Nuclear Power School at Mare Island, California; and A1W Nuclear Prototype Training at Idaho Falls, Idaho; where he received advanced and practical training in nuclear engineering. CDR MURRAY's first submarine tour was onboard USS SCAMP (SSN 588) where he served as Electrical Assistant, Reactor Control Assistant, Damage Control Assistant, Sonar Officer, and Communicator. He then reported to the Fleet Ballistic Missile Submarine USS NATHAN HALE (SSBN 623) (GOLD Crew) at Charleston, South Carolina as Engineer Officer from February 1967 to June 1970. In July 1970, CDR MURRAY was selected to serve on the Staff of the Chief of Naval Operations as an assistant to the SSN Program Coordinator. On completion of this tour in January 1973, CDR MURRAY was ordered to Newport News, Virginia to assume duty as Prospective Executive Officer of LOS ANGELES (SSN 688) under construction at Newport News Shipbuilding and Drydock Company.

CDR MURRAY is married to the former Kathryn Ann Kelly of McKinney, Texas. He and Mrs. MURRAY and their two children, Kelly and Tom, reside in Hampton, Virginia.



The executive officer, while in the execution of his duties as such, shall take precedence over all persons under the command of the commanding officer.

— U. S. Navy Regulations, 1973

THE OFFICERS



LCDR L. M. JACOBI
Navigator



LCDR B. P. COOPER
Combat Systems Officer



LT. D. I. STANLEY
Operations Officer



LT P. W. YOUNG
Sonar Officer



ENS A. E. BOWER
Supply Officer



LTJG M. B. CAVALLO
Integrated Systems Officer



ENS M. R. LENCI



LCDR M. L. McHUGH
Engineer



LT L. N. Church
Assistant Engineer

"...the fighting man recognizes and respects the essential integrity of the artist in leadership; and he also knows that, when the day-to-day problems which concern his comfort, welfare and safety are imaginatively handled, he can trust the officers placed over him. No leader can ask more than that he should be trusted, and to a great extent is his imagination which will win him the trust of his men."

— S. W. Roskill



LT T. A. KEVERN
Damage Control Assistant



LTJG D. L. LENGEL
Main Propulsion Assistant



LTJG S. E. MAYS
Electrical Officer



LTJG G. W. MAIO
Reactor Control Officer

THE CHIEFS



Master Chief Machinist Mate (SS)
R. D. WHITE
Chief of The Boat



Chief Sonar Technician (SS)
C. L. FORD
Sonar L.P.O.



Chief Electronics Tech. (SS)
J. R. GERLING
Combat Systems Dept. L.P.O.



Chief Fire Control Tech. (SS)
J. C. CLARK
Integrated Systems L.P.O.



Chief Quartermaster (SS)
N. J. FREEL
Assistant Navigator



Chief Data Systems Tech. (SS)
K. M. JACOBS
Data Systems Div. L.P.O.



Chief Storekeeper (SS)
W. C. SMITH
Supply Dept. L.P.O.



**Master Chief Machinist Mate (SS)
G. L. PFOST
Engineering Dept. L.P.O.**



**Chief Electronics Technician (SS)
J. L. HARDIN
Reactor Controls L.P.O.**



**Chief Machinist Mate (SS)
G. P. HICKEY
Machinery L.P.O.**



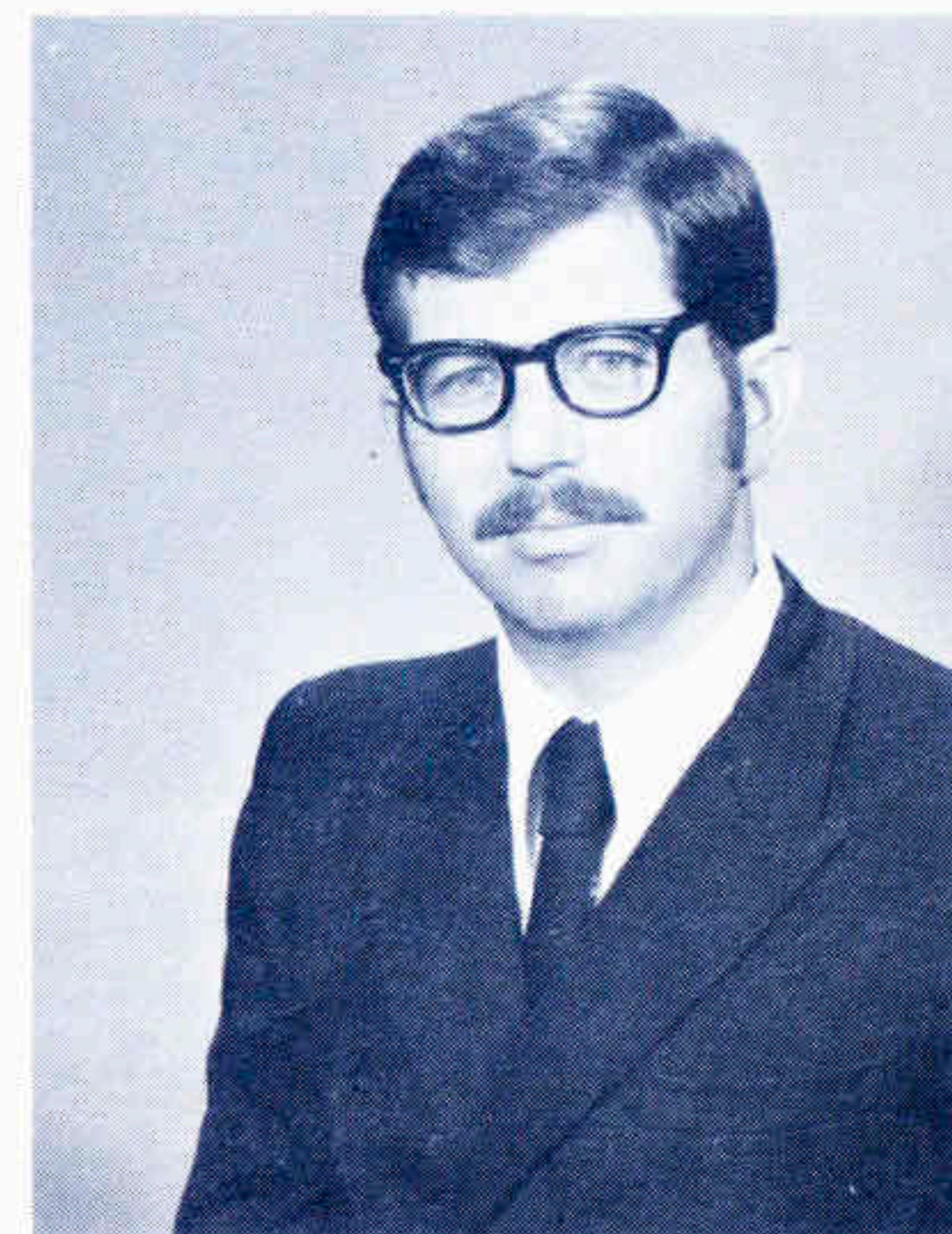
**Chief Machinist Mate (SS)
C. L. DAVIS
Auxiliary L.P.O.**



**Chief Electricians Mate (SS)
D. J. FRITZ
Electrical L.P.O.**



**Chief Interior Comm. Tech.
F. L. TILLMAN
Interior Comm. L.P.O.**



**Chief Electricians Mate (SS)
J. W. BOWERS
Electrical Division**

A strong ship is like a strong building. The Wardroom is the foundation and the crew, the bricks. But it takes a good mortar, the chiefs, to hold the whole thing together.

*— M. L. McHugh, LCDR, USN
1976*

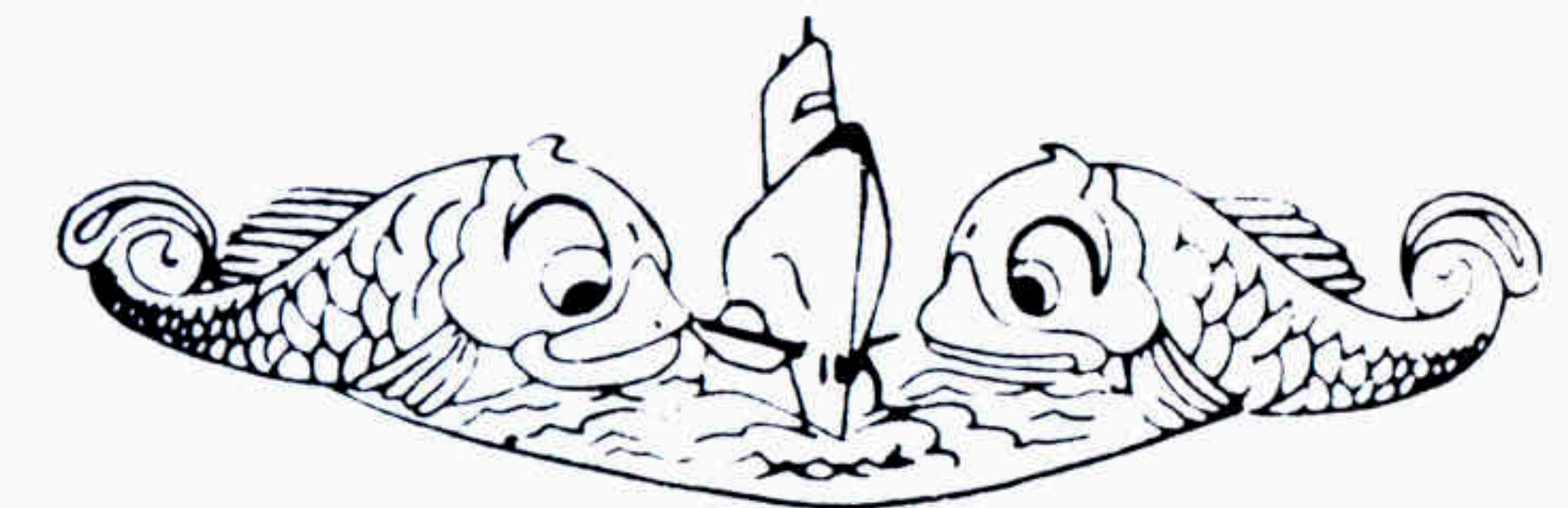
THE CREW

"From the frigate under sail to the submarine powered by nuclear energy and from the smooth-bore cannon to the guided missile, technological advances have in no way altered the fact that the heart of the Navy is the trained sailor."

— RADM Julius A. Furer, USN
(Ret.)



FRONT (L to R) CS1 (SS) D. P. Batoon, STS3 G. A. Young, MM2 J. J. Taylor, TM2 (SS) R. E. Quinley. **SECOND (L to R)** FN D. C. J. Gianelloni, IC1 R. L. Price, DS1 C. E. Fry, MS1 (SS) S. L. Andresen. **BACK (L to R)** QM3 J. D. Richards, MS3 (SS) A. J. Gruntner, STS1 (SS) E. O. Peoples, QM2 (SS) M. Broome.



Insignia of the U. S. Navy's Submarine Service is a Submarine flanked by two dolphins. Dolphins, traditional attendants to Poseidon, greek god of the sea and patron deity of sailors, are symbolic of a calm sea.

FRONT (L to R) MM2 (SS) M. B. Hagley, MSSN H. K. Barnett, MM2 (SS) R. C. Hicks, ETN2 F. R. Pando, FTG2 (SS) S. H. Landers, MS3 (SS) D. J. Hammers. SECOND (L to R) STS2 (SS) R. L. Porterfield, RM1 (SS) T. J. Hurley, ETN2 L. M. Berg, MM2 W. W. Owens, IC2 (SS) K. A. Renwick, EM2 M. L. Jordan. BACK (L to R) MM2 R. A. Kuhr, STS1 (SS) J. L. Nafziger, RM3 T. E. Amann, RMSN T. L. Spaulding, ETN3 S. C. Adams, EM1 (SS) J. L. Taylor, QM1 (SS) J. M. Vaughan.



FRONT (L to R) MM1 (SS) K. P. Sickinger, FN C. W. Wells, HM2 R. W. Dods, IC3 (SS) R. E. Wolcott, IC1 G. D. Bennett, MM2 (SS) D. G. Gillard, MM1 M. E. Stroub. SECOND (L to R) IC1 (SS) B. A. Cripe, MMFN T. D. Howell, MM1 J. E. Price, RM3 T. L. Cole, EM1 P. D. Trudell, ETN2 M. D. Hogan, STS1 (SS) D. C. Gulrud. BACK (L to R) MM1 R. B. Roche, MM2 S. F. Ingalls, STS3 D. W. Bouch, FTG1 W. F. Derendal, ET1 (SS) R. J. Bridges, ETN2 T. H. Masteller, MM2 D. J. Fromer, MM1 G. R. Kimmell.

CREW MEMBERS NOT PICTURED

MS1 (SS) S. L. Andresen
 MM1 (SS) T. R. Lindburg
 IC1 (SS) R. C. Eckenroth
 FTG1 (SS) R. D. Suratt
 STS2 C. B. Calvert
 MM2 D. R. Carter
 RM2 S. E. Cole
 RM2 (SS) C. J. Mueller
 ETN2 T. E. Snell
 ETR2 J P. Hodge
 MM3 T. C. Landolt
 MM3 J. A. Lewis
 MM3 P. F. Stumpff
 EM3 R. A. Peacock III
 MSSN D. N. Amado
 SKSN K J. Dartez
 SN D. R. Hall
 SN D. G. Muhmel



FRONT (L to R) ETN2 (SS) L. E. Robertson, ET1 (SS) R. W. Strickland, EM1 (SS) W. J. Wolfe, SKSN G. N. Wilson, TM2 M. E. West, STS1 (SS) G. D. Palmer, STS3 P. J. Yates, ETN2 S. M. Hamrick, STS3 D. D. Jenson. SECOND (L to R) STS1 (SS) D. T. Zavoras, STS1 (SS) P. H. Gooder, MM1 K. Fennell, STS2 (SS) D. R. Provost, PNSN M. W. Box, ETN2 T. E. Snell, RM2 L. D. Eicher, EM2 R. A. Sievers, MM2 C. E. Messick, MM2 V. A. Stuart. BACK (L to R) YN1 (SS) E. W. Seeger, STS2 J. A. Cienkus, ETR2 K. W. Copley, MM2 (SS) R. L. Powell, MM1 (SS) R. R. Roth, MM2 D. N. Mcvicar, MM2 B. C. Cummings, MM1 (SS) B. K. Headden, ETR2 D. C. Humphreys, EM2 W. E. Comben, ET1 B. Hosticka.

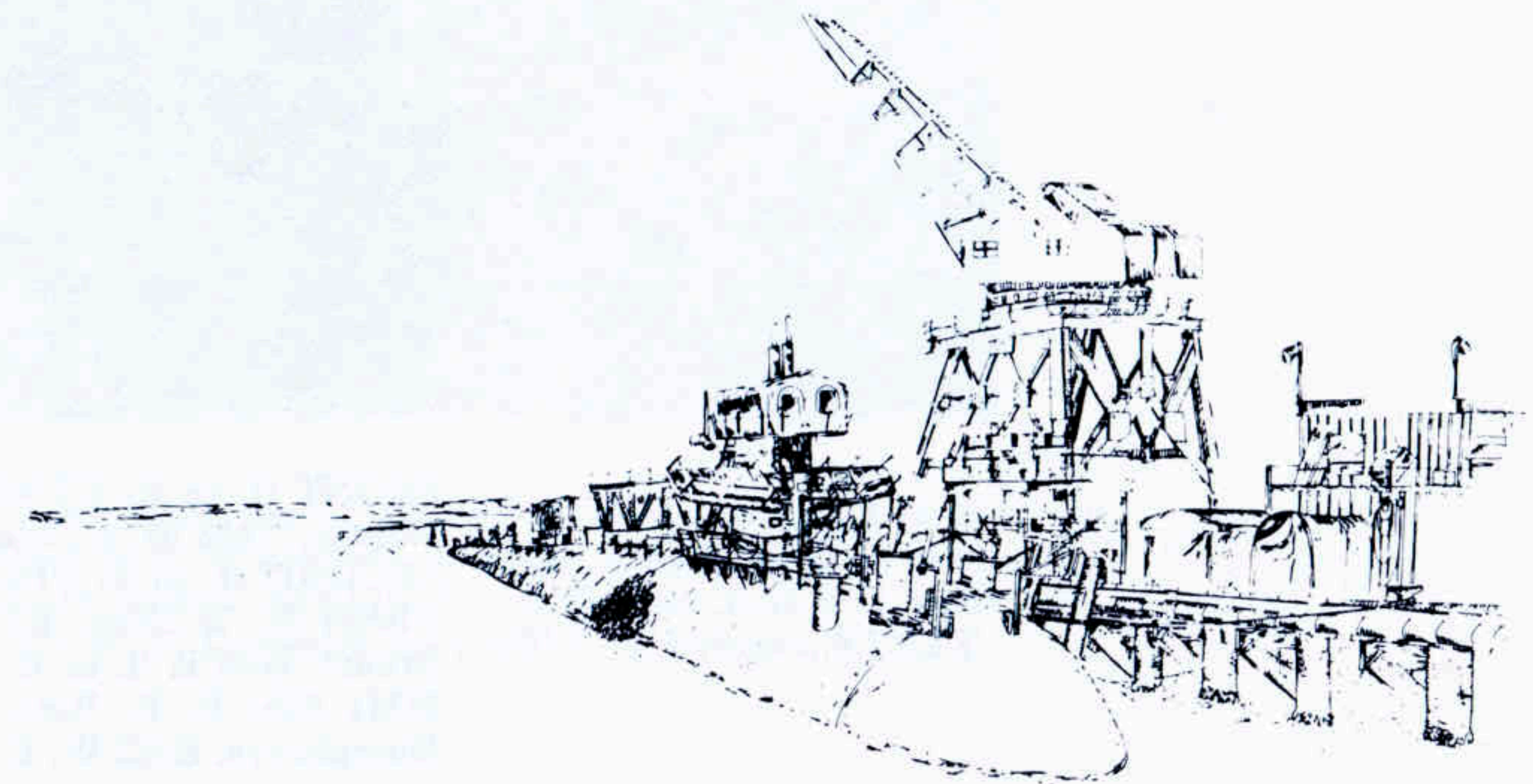
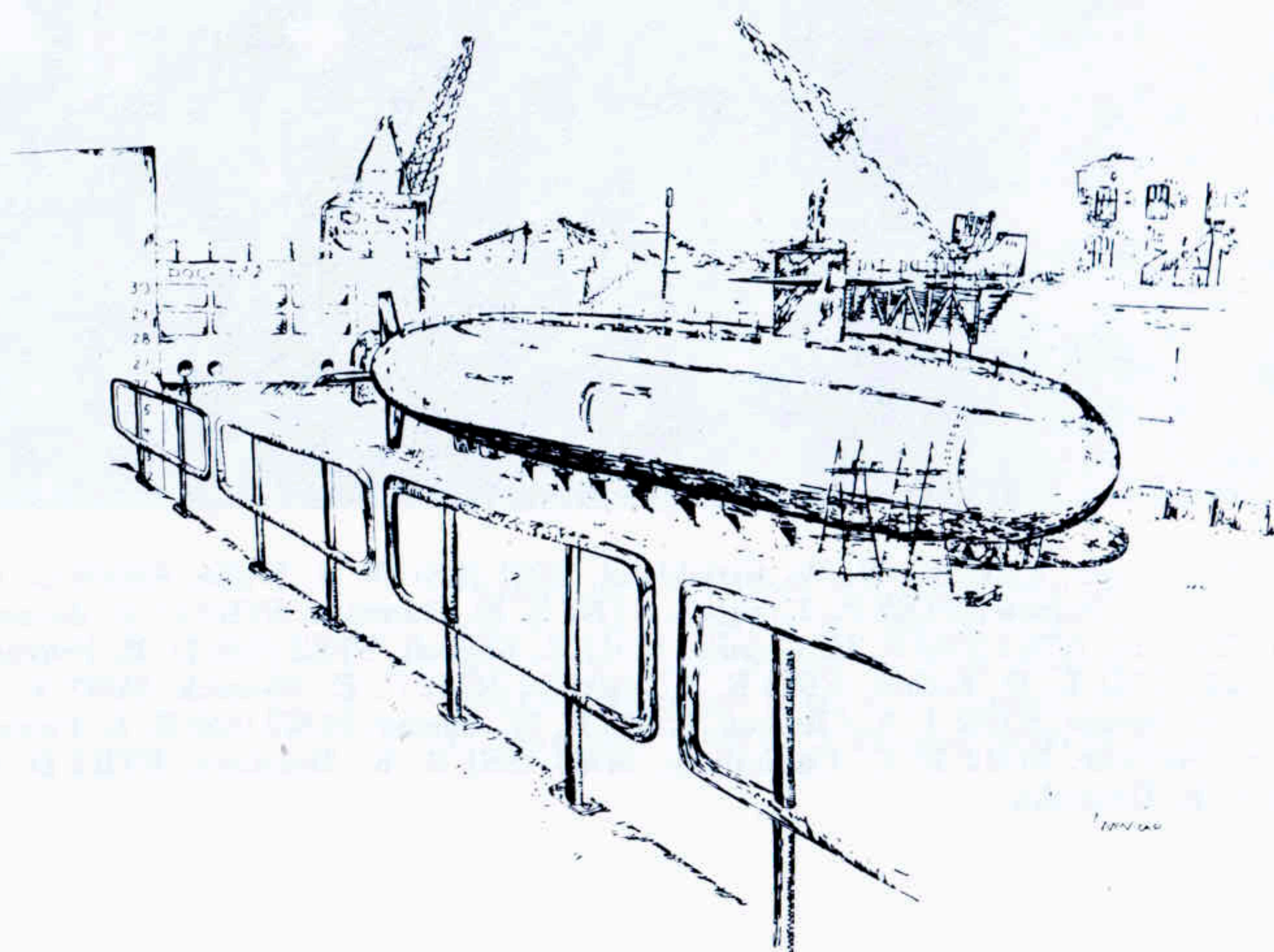
The members of LOS ANGELES's Pre-Commissioning Crew listed below who labored long and hard during the building of LOS ANGELES are not present at Commissioning but are listed herein in recognition of the significant contributions they made toward its final excellence. They are considered SHIPMATES.

LCDR A. L. HOGG
RMC L. A. DAVIS
FTGC C. F. WATSON
YNCS R. G. LANTZ
MMC G. H. SOPER
FTG1 R. E. FOLLETT
EM2 J. A. MAY
SN B. J. STEIN
ET1 G. L. DAVIS
MM1 R. E. NIEDZIELSKI
MM2 R. A. ERICKSON
EM1 T. P. HAIKIN

LT. K. K. VANTINE
WO1 G. M. HACKETT
QMC H. A. JOHNSON
HMCS C. N. KING
QMCS P. F. CURTIS
MM1 R. S. LENHERR
MM2 W. R. MITTEN
MM2 C. A. CLANTON
MM1 J. R. DICKEY
SK2 D. A. SHAW
MM1 J. K. CHADWICK
QMSN R. E. SPANGLER

MMC D. C. BAYLESS
TMC C. J. BERGERON
ETC R. E. EHRLICH
ICC D. M. HAMILTON
MM1 C. J. CLARKE
MM1 M. E. WAGONER
MM1 G. W. BLAKELEY
RM2 G. T. LEE
STS1 R. G. REASOR
TM2 G. M. HANSEN
MM1 M. E. STROUB
MM2 T. M. JOHNSTON

RMC C. R. W. DAVIDSON
TMCM F. A. LISTER
MMC G. WILKENS
ET1 J. L. COOK
IC1 R. E. HARPER
FTG1 D. R. HARRISON
MM1 A. E. MULLER
MM1 C. E. KIMES
MM1 S. A. ARNER
MM2 D. E. VIPOND



PLANK

OWNER

Know All Men by These Presents: and to all LANDLUBBERS, SEA LAWYERS, SALTS, SWABS, SQUARE-KNOT ADMIRALS, GOLD BRICKERS AND OTHER SCAVANGERS OF THE SEVEN SEAS Greetings:

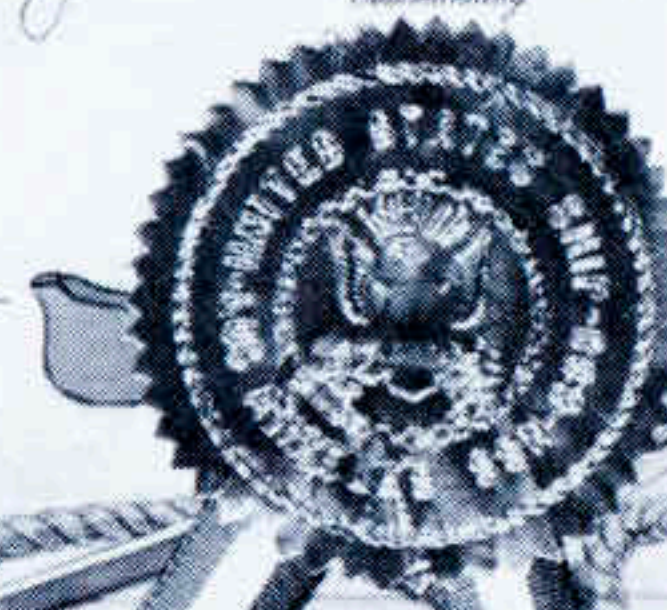
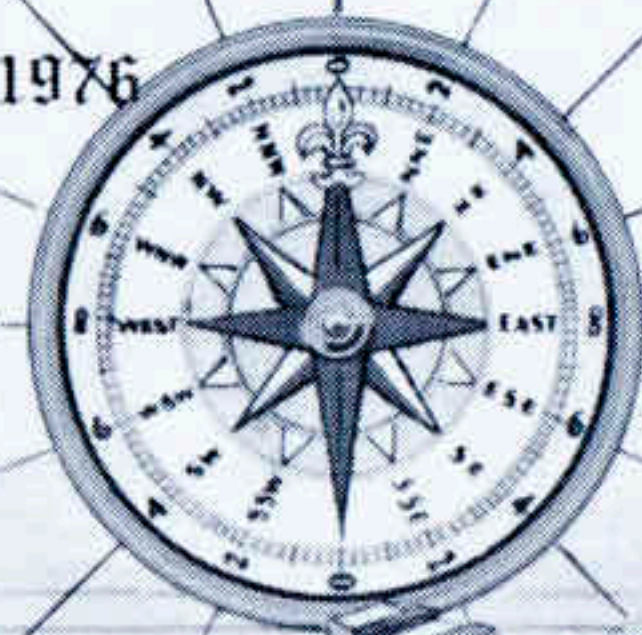
BE IT KNOWN: By all earthly mortals and others who may be honored by his distinguished presence that

STS1 SS A. Bryan Mylie

WAS AN HONORED MEMBER OF THE ORIGINAL ILLUSTRIOUS NAVY CREW WHICH FOREVER DISTINGUISHED ITSELF WHEN IT Commissioned the Good Ship USS Los Angeles (SSN-688) And, therefore, for this Good AND SUFFICIENT REASON, HE IS ENTITLED BY THE LAWS OF THE SEA TO ALL THE RIGHTS AND PRIVILEGES OF A PLANK OWNER. BE IT FURTHER UNDERSTOOD: That he is entitled also to a clear, free, open and unencumbered title to one plank of the deck of the above mentioned ship. THIS FINAL ACCURATE SELECTION WILL BE MADE IN ORDER OF SENIORITY according to the treasured and honorable records contained in Davy Jones' Log. DISOBEY THIS ORDER UNDER PENALTY OF OUR ROYAL DISPLEASURE.



13 November 1976

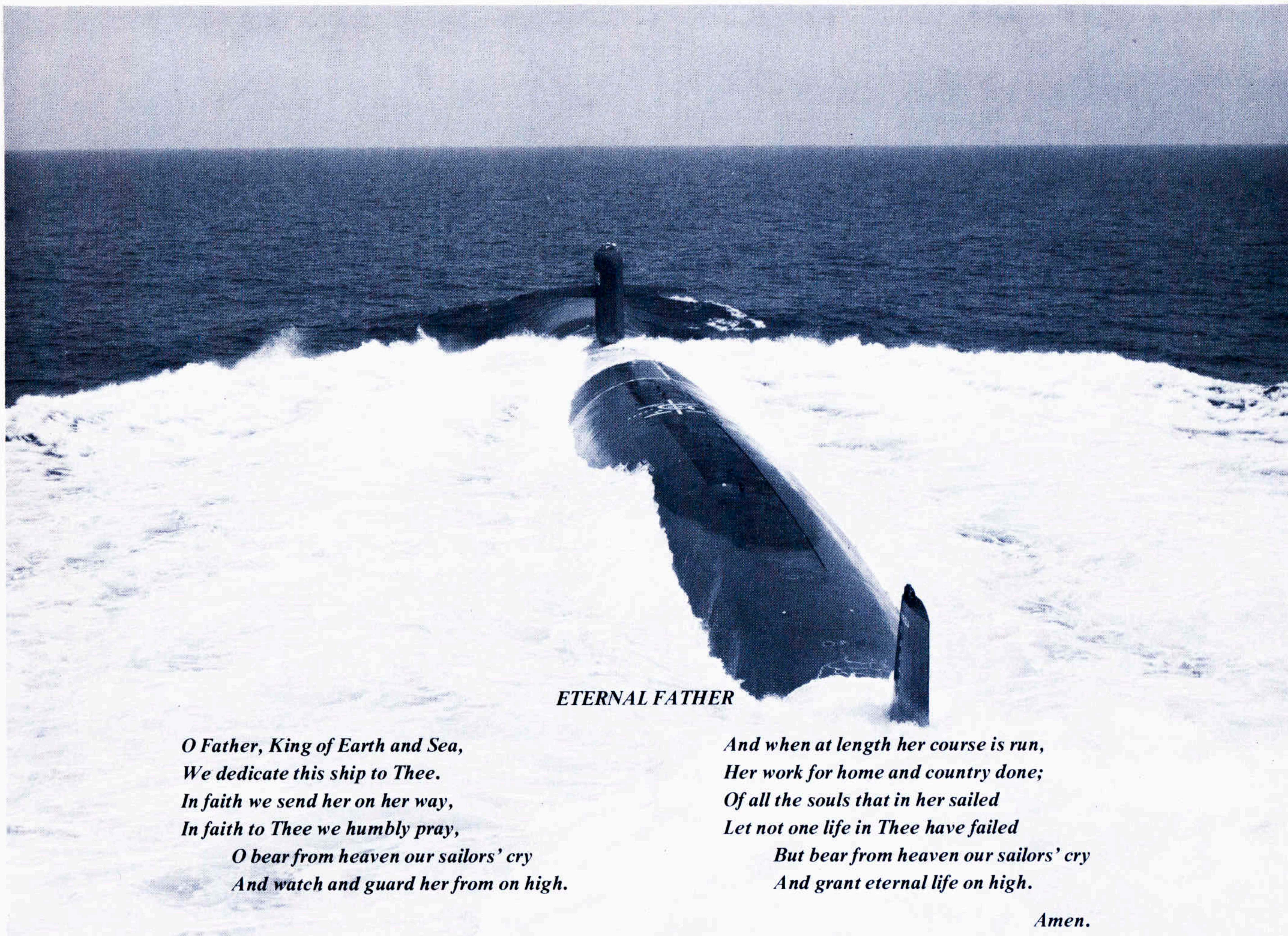


PLANKOWNER

As with the Commissioning Ceremony, the tradition of the plankowner reaches far back into history. As a member of the Navy crew serving on board the ship at the time of commissioning, the plankowner receives "a clear, free, open and unencumbered title" to a plank of the deck of the ship, thus signifying his participation in this special day. This privilege will not be given to any future member of the crew of the USS LOS ANGELES. More than just a title, we feel we have grown with the ship. Paralleling her construction was our training to operate the ship. When each was ready we came together as a team, the ship and crew at sea.

Some of us have watched and been a part of the ship under construction for many months, a few over three years now. Others have been aboard only a few days. Regardless of the time with the precommissioning unit, we are all proud of our ship and feel a special kinship to her this day.

We are honored by each of you, in your attendance, and hope that you feel the same pride that we do in serving aboard the United States Ship LOS ANGELES.



ETERNAL FATHER

*O Father, King of Earth and Sea,
We dedicate this ship to Thee.
In faith we send her on her way,
In faith to Thee we humbly pray,
O bear from heaven our sailors' cry
And watch and guard her from on high.*

*And when at length her course is run,
Her work for home and country done;
Of all the souls that in her sailed
Let not one life in Thee have failed
But bear from heaven our sailors' cry
And grant eternal life on high.*

Amen.

