

# WELCOME ABOARD

## USS LOS ANGELES

### SSN-688



COPYRIGHT 1976 DR. McVICAR





## LOS ANGELES INSIGNIA

The design for the ship's insignia was chosen from a number of drawings submitted by high school students of Los Angeles, California. Miss Sandra Higashi's design depicts the history of previous units named LOS ANGELES and exemplifies the characteristics of the submarine, LOS ANGELES. Each of the porpoises represent one of the units bearing the name of the city of Los Angeles. Porpoises were chosen because they represent speed, grace, and endurance. Porpoises or "dolphins", as they are sometimes labelled, are symbolic of a calm sea and sometimes called a "sailor's friend."



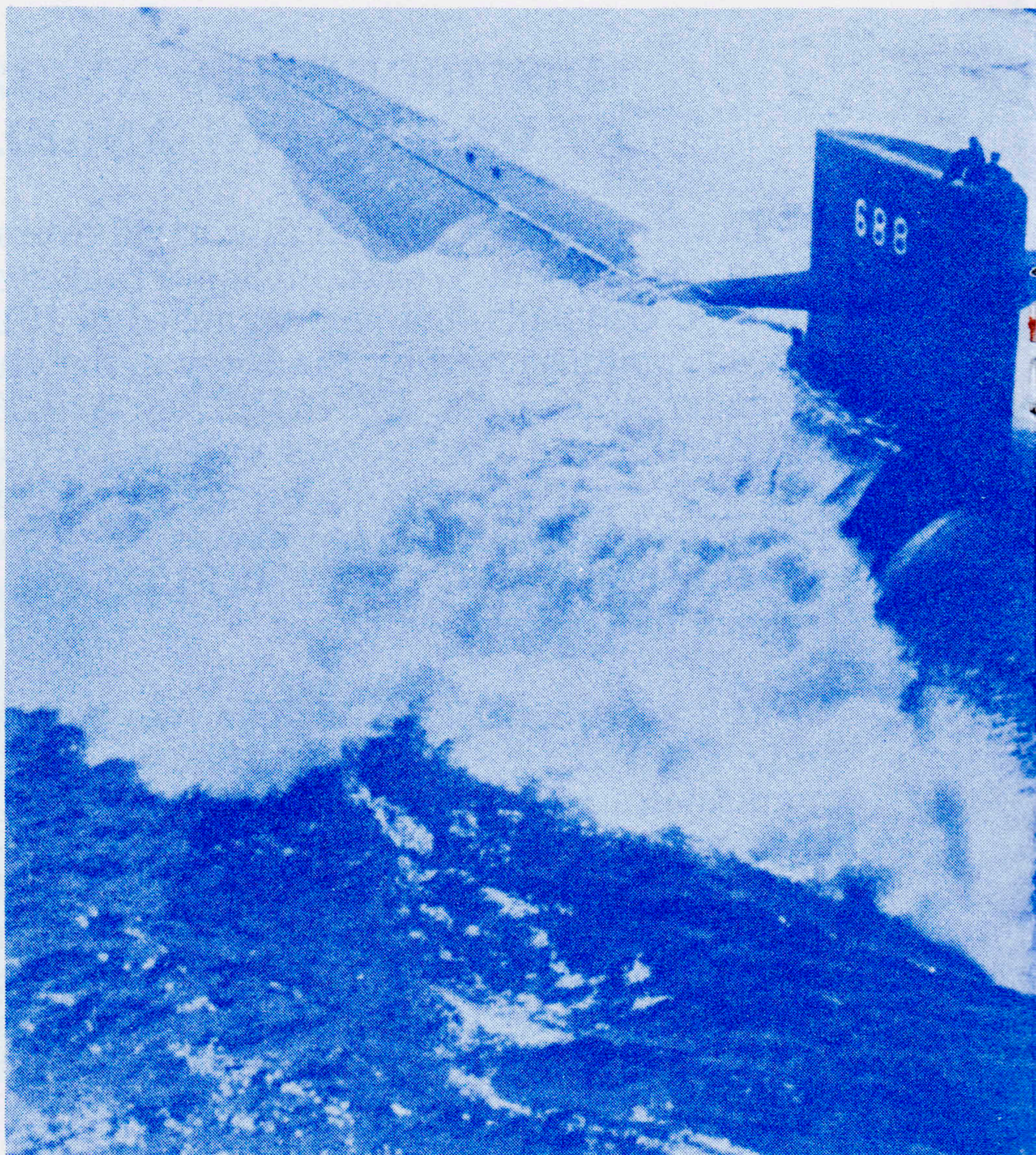
## DISTINGUISHED ANCESTRY OF THE LOS ANGELES

The first LOS ANGELES, a naval overseas tanker, was built by the Union Iron Works in San Francisco, California, for the Union Oil Company and was launched in 1916. On 9 August 1917 she was commissioned by the Navy under the command of LCDR Alexander Mackenzie, USNRF. LOS ANGELES operated along the Atlantic and Gulf coasts during 1917 and in 1918 was assigned to transatlantic crossings carrying fuel oil to Brest, France, and Portsmouth and Devonport, England. In 1919, at the end of World War I, LOS ANGELES was decommissioned and returned to her former owners.

The second LOS ANGELES was commissioned an air ship, the LOS ANGELES (ZR3) on 25 November 1924 and remained in commission until 30 June 1932. The airship LOS ANGELES was built by the Zeppelin Airship Company at Friedrichshafen, Germany, for the United States Government. She was christened by Mrs. Grace Coolidge, wife of President Calvin Coolidge and placed under the command of LCDR Maurice R. Pierce, USN. LOS ANGELES served for more than 7 years as an aerial laboratory and testing station for numerous experiments in the development of coordinated naval air and sea tactics.

The third LOS ANGELES, a heavy cruiser was commissioned USS LOS ANGELES (CA135) on 22 July 1945 and placed under the command of CAPT John A. Snackenburg, USN. Her sponsor was Mrs. Fletcher Bowron, wife of the Mayor of Los Angeles. USS LOS ANGELES (CA135) served in the Seventh Fleet cruising off the coast of China and in the western Pacific to the Marianas, from 3 January 1946 until 21 January 1947. She was decommissioned on 9 April 1948. In January 1951, USS LOS ANGELES (CA135) was recommissioned under the command of CAPT Robert N. McFarlane. She was deployed to the Far East in support of operations in the Korean conflict. USS LOS ANGELES (CA135) served as the Flag Ship for RADM Arleigh E. BURKE, COMCRUDIV FIVE, providing gunfire support and bombardment at KojiNi and Wonsan and other coastal areas. She received minor damage from shore gunfire in March 1953 and returned to Long Beach, California on 15 May 1953. From 1953 to 1963 LOS ANGELES made six deployments to the Far East and participated in the Quemoy-Matsu operation of 1956. On 15 November 1963, USS LOS ANGELES (CA135) was decommissioned.





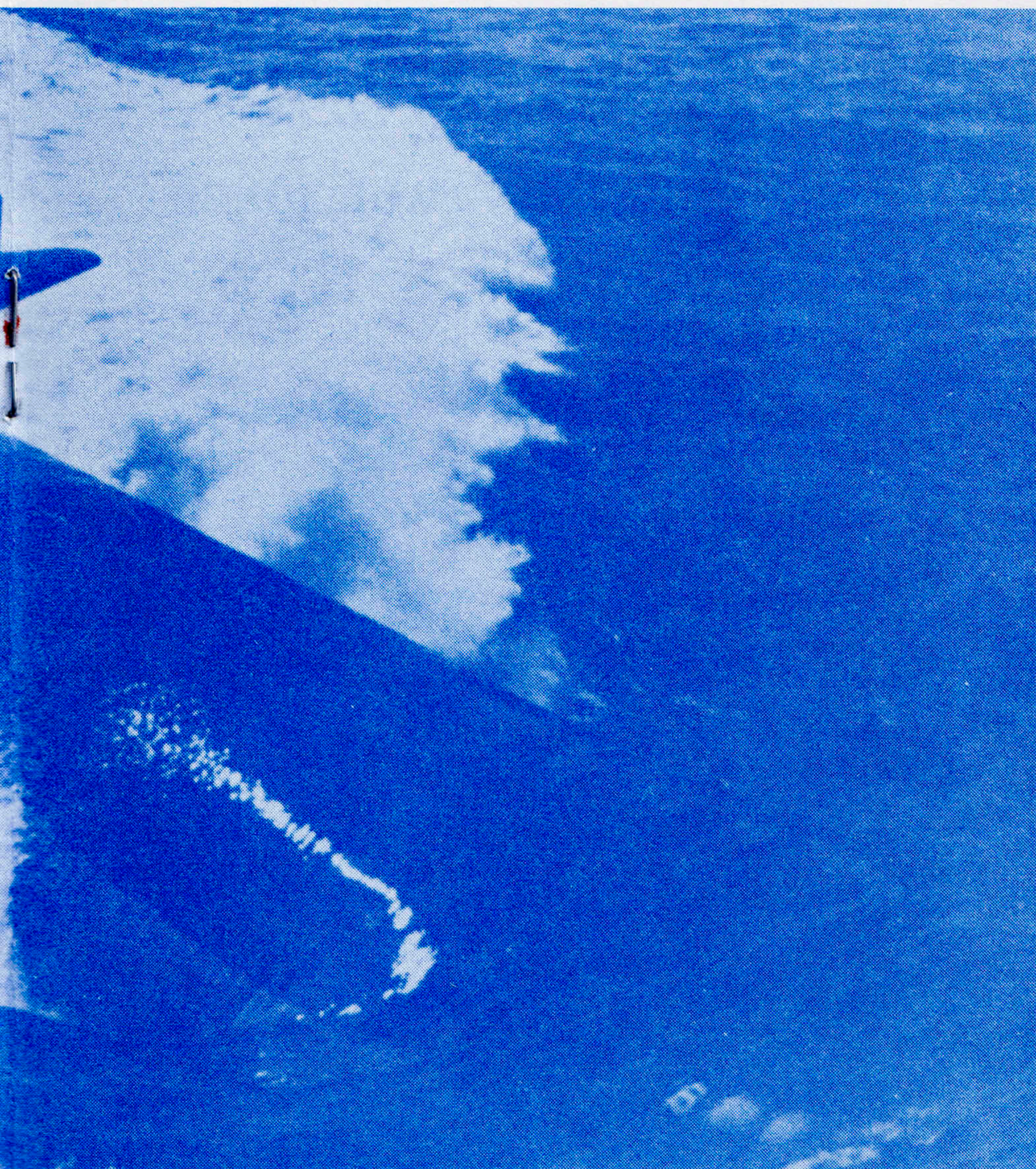
## USS LOS ANGELES

The USS LOS ANGELES (SSN688) is the Navy's 109th nuclear powered submarine and the 67th of the attack submarine fleet. She is the lead ship for a new class of high speed nuclear attack submarines. LOS ANGELES began her waterborne career on 6 April 1974 when she was launched by the Newport News Shipbuilding Company in Newport News, Virginia. LOS ANGELES was christened by Mrs. Armstrong, then counsellor to the President of the United States on 6 April 1974. Nearly 39 months after launch, LOS ANGELES set out on her initial sea trials to test operation of the nuclear propulsion plant under the direction of Admiral H. G. Rickover, the Deputy Commander for Nuclear Propulsion of the Naval Sea Systems Command and head of the Naval Reactors branch of the Energy Research and Development Administration. Immediately after completion of the first sea trials, further trials were commenced to test the complex sonar and weapons systems installed in LOS ANGELES.

## SHIPS CHARACTERISTICS

Length Overall .....	360 feet
Maximum Beam .....	33 feet
Surfaced Displacement .....	6100 tons
Submerged Displacement .....	6900 tons





## LOS ANGELES (SSN688)

LOS ANGELES brings to the fleet the unlimited endurance of nuclear power, the most advanced submarine detecting system and an impressive underwater weapons launch system. The LOS ANGELES is capable of high speed support operations complementing the carrier task forces of the United States Navy.

Five separate underway tests were performed by the crew of LOS ANGELES prior to delivery of the ship to the United States Navy on 13 November 1976.

On May 27, 1977, the President of the United States James Earl "Jimmy" Carter and his wife Rosalynn boarded the LOS ANGELES at Port Canaveral, Florida for a day long cruise aboard the submarine.

LOS ANGELES completed her first extended deployment on 2 September 1977.

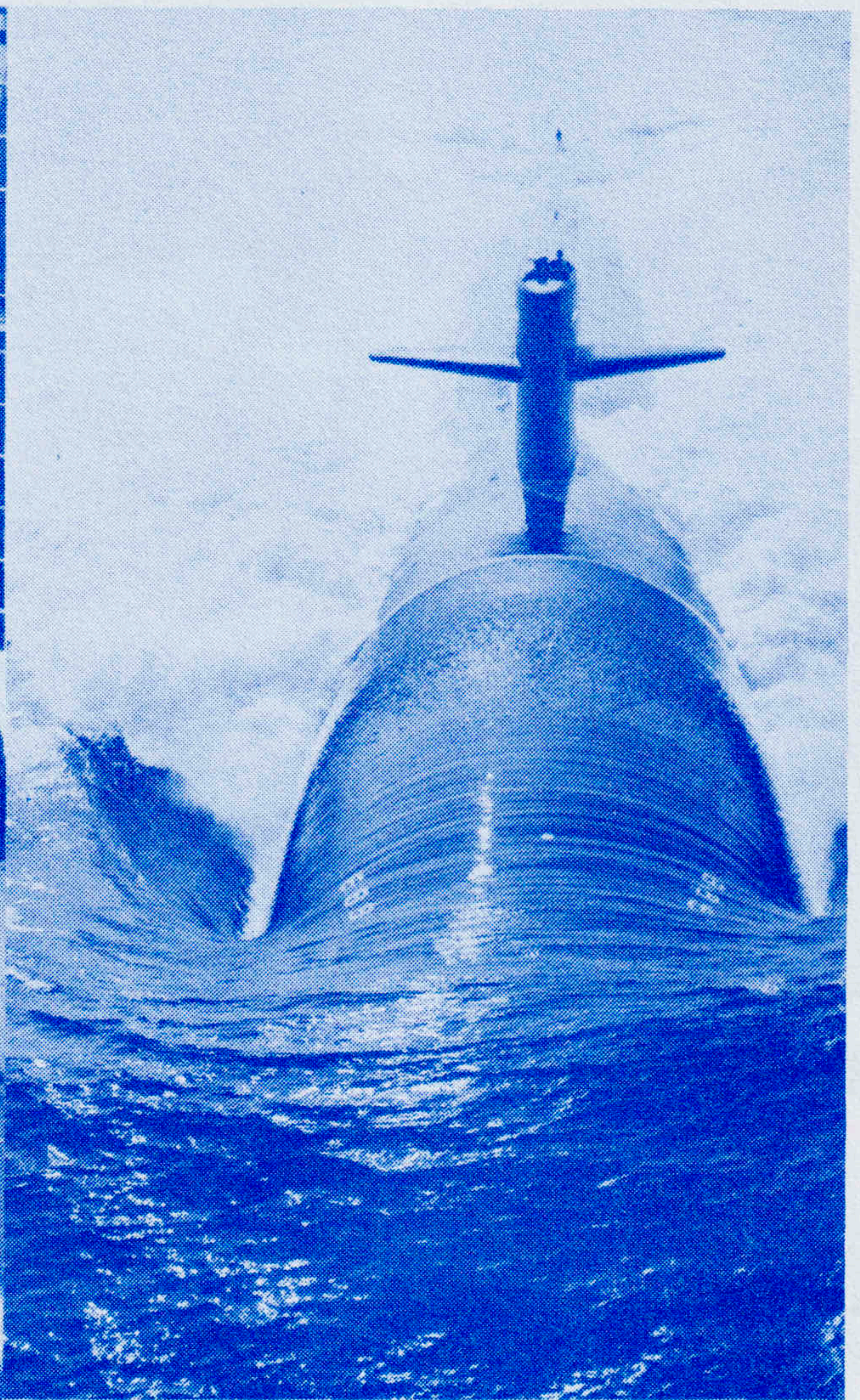
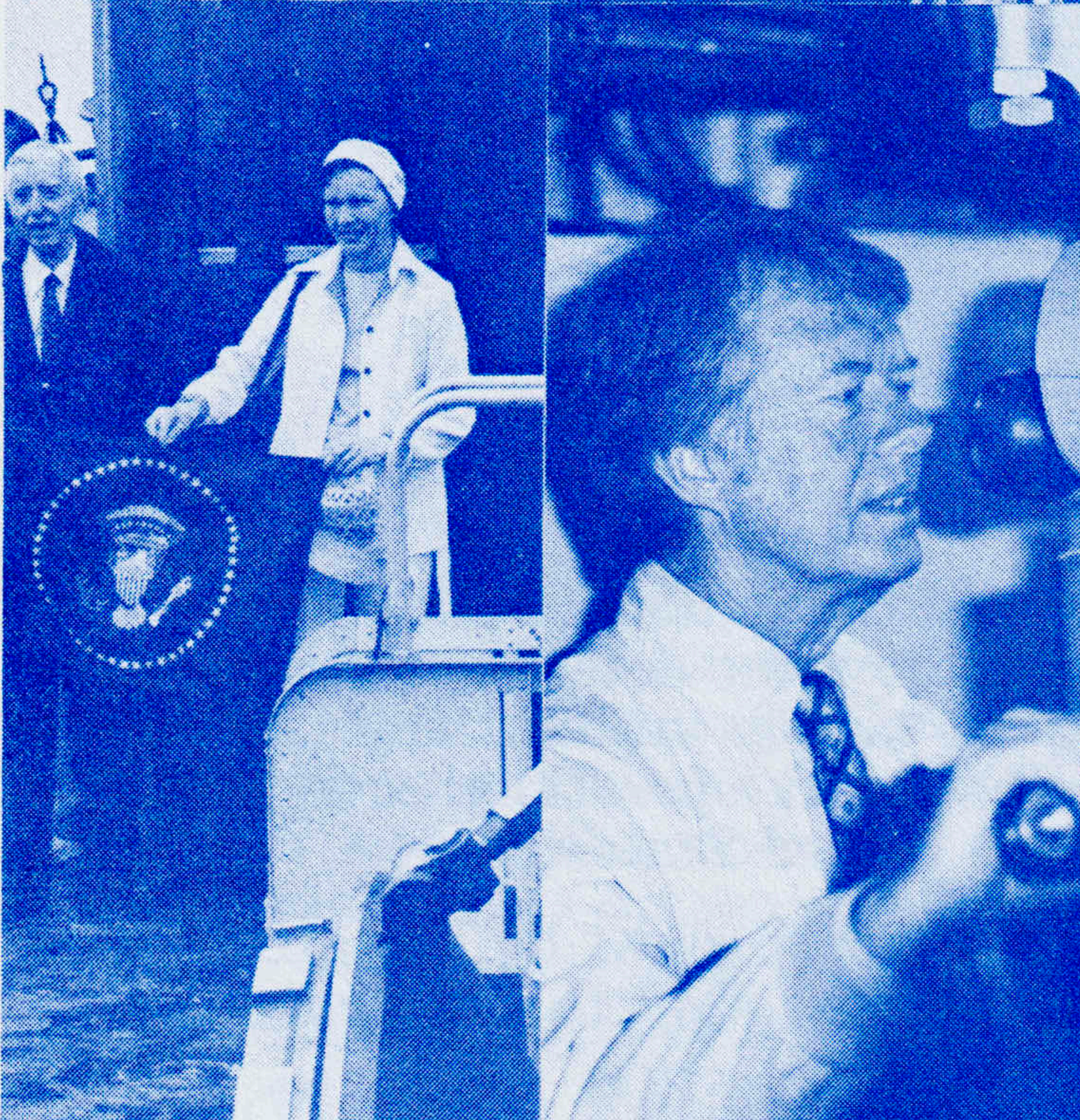
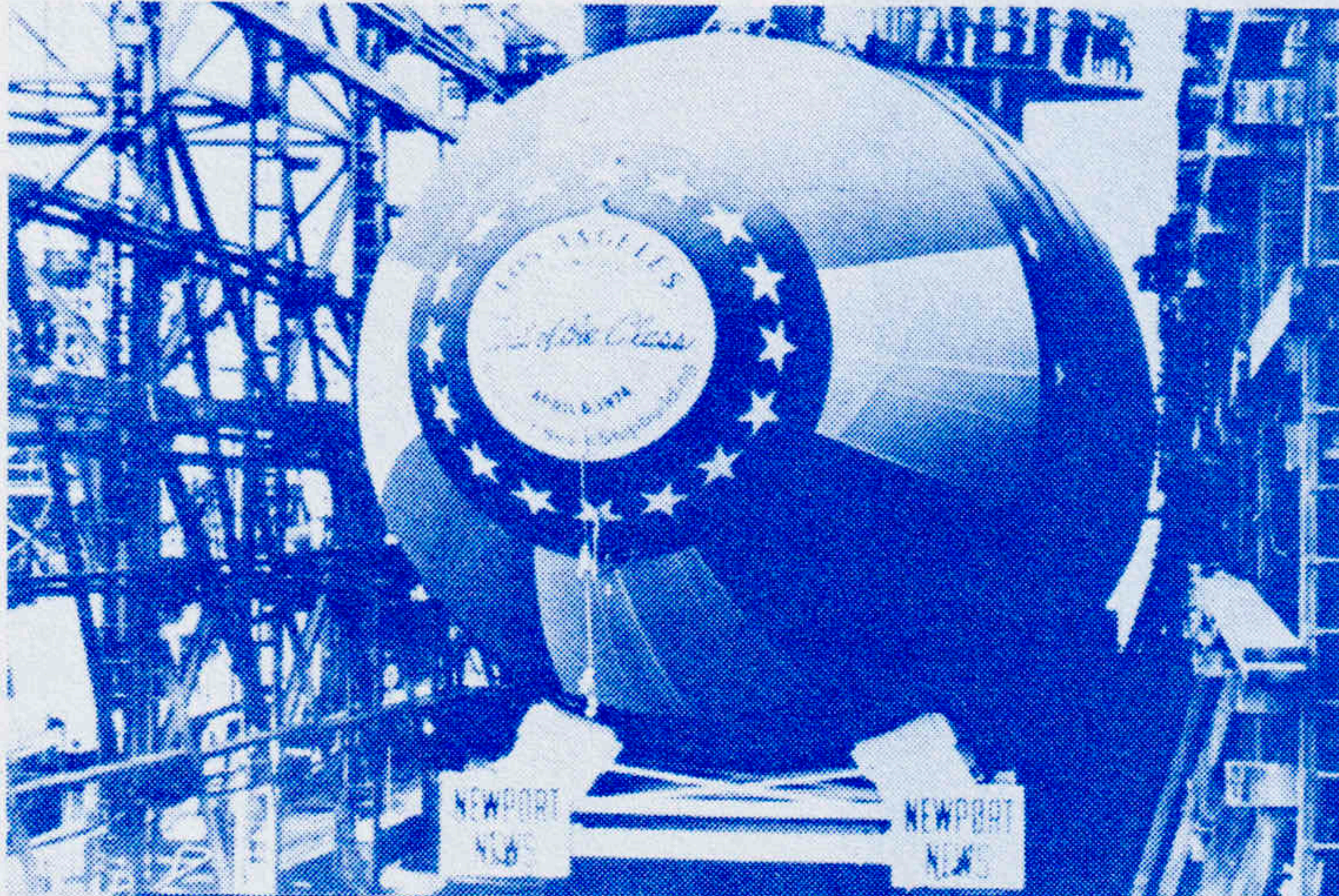
## CHARACTERISTICS

Maximum Depth .....	In excess of 400 feet
Maximum Speed .....	In excess of 20 knots
Power Source .....	S6G Nuclear Reactor
Ship's Complement .....	12 officers/115 enlisted men



***"I WISH TO HAVE NO CONNECTION WITH ANY SHIP  
THAT DOES NOT SAIL FAST, FOR I INTEND TO GO IN  
HARM'S WAY..."***

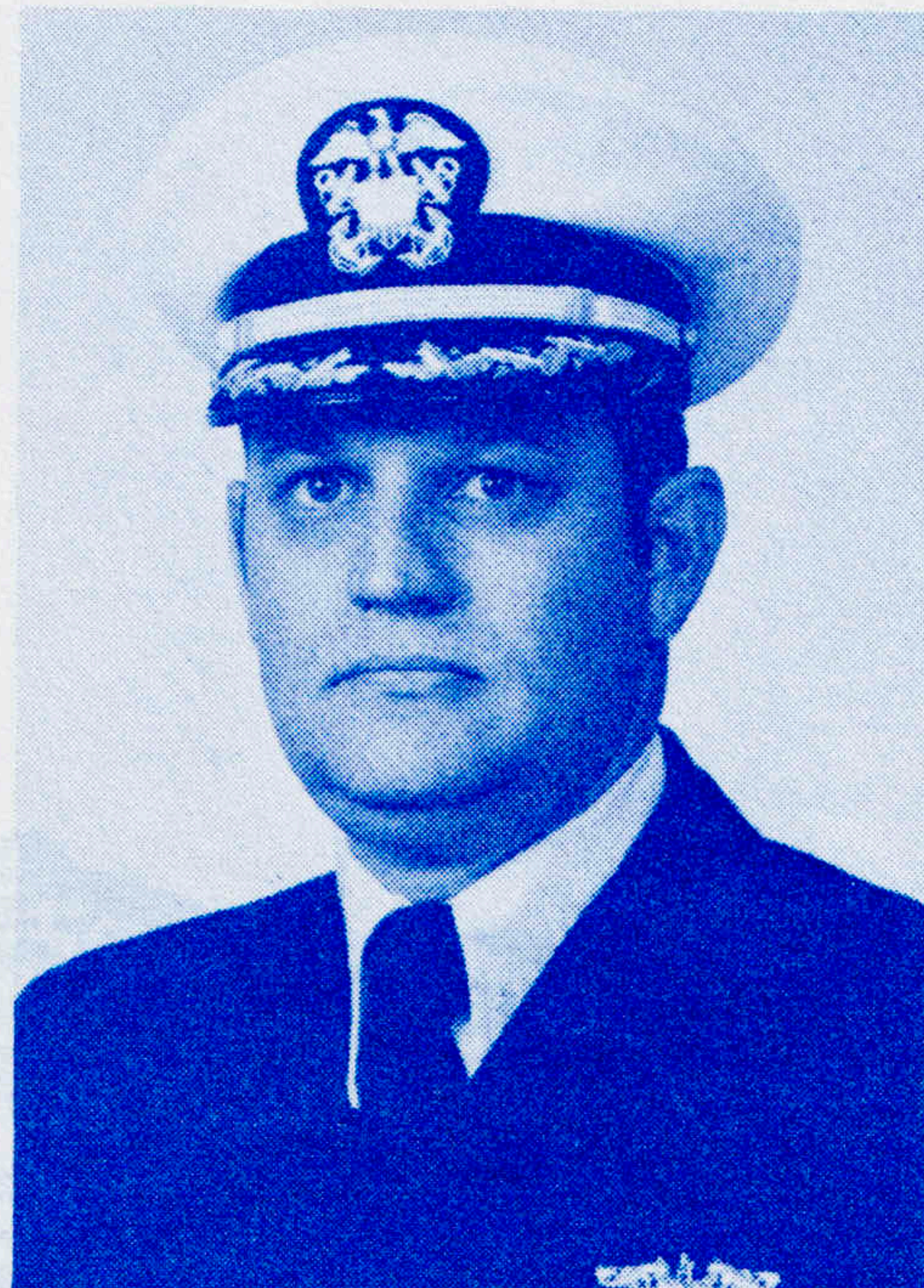
**JOHN PAUL JONES**





## THE COMMANDING OFFICER

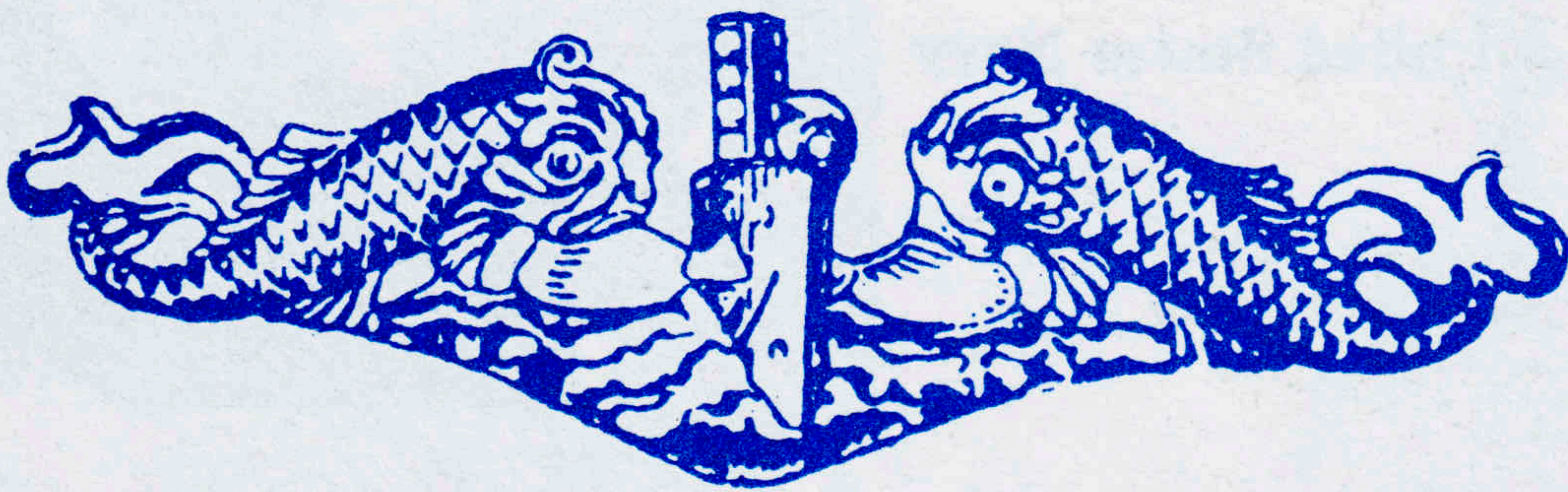
**Commander**  
**RALPH EUGENE BEEDLE**  
**United States Navy**



Commander BEEDLE graduated from the United States Naval Academy in June 1962. After completing Nuclear Power Training and attending Submarine School, he reported to the USS TRITON (SSN586) in April 1964 where he served as First Lieutenant, Electrical and Reactor Controls Officer, Communications Officer and Weapons Officer. He then reported to the Nuclear Power School at Bainbridge, Maryland, for duty as an enlisted department instructor and Assistant Director of the Enlisted Personnel Department. In August 1968, he reported to the USS QUEENFISH (SSN651) where he served as Engineer Officer until June 1972. Reporting to the Secretary of the Navy, Office of Program Appraisal, Washington, D.C., Commander BEEDLE served as an analyst for the Submarine and Strategic Programs until June 1974. He served as the Executive Officer, USS STURGEON (SSN637) from June 1974 until March 1976.

Commander BEEDLE relieved as Commanding Officer, USS LOS ANGELES (SSN688) on 21 October 1977.





Insignia of the U. S. Navy's Submarine Service is a Submarine flanked by two dolphins. Dolphins, traditional attendants to Poseidon, greek god of the sea and patron deity of sailors, are symbolic of a calm sea.